



**FISCAL YEAR 2022/23
ANNUAL SB165 COMPLIANCE REPORT**

**TEMECULA VALLEY UNIFIED SCHOOL DISTRICT
COMMUNITY FACILITIES DISTRICT NO. 2010-1**

December 12, 2023

Prepared For:
Amber Perez
Director of Facilities Development
Temecula Valley Unified School District
31350 Rancho Vista Road
Temecula, CA 92592

Prepared By:
Special District Financing &
Administration
437 West Grand Avenue
Escondido, CA 92025

TABLE OF CONTENTS

- Section 1. PURPOSE AND OVERVIEW2
 - A. SUMMARY OF AUTHORIZING LEGISLATION2
 - B. HISTORICAL USE OF COMMUNITY FACILITY DISTRICTS AT TEMECULA VALLEY UNIFIED SCHOOL DISTRICT 2
- Section 2. SUMMARY OF FORMATION PROCEEDINGS.....3
 - A. FORMATION PROCEEDING ACTIONS3
 - B. CFD LOCATION / BOUNDARIES3
 - C. AUTHORIZED FACILITIES3
- Section 3. DEBT-ISSUANCE INFORMATION4
- Section 4. DEVELOPMENT AND FISCAL STATUS5
 - A. CURRENT DEVELOPMENT STATUS5
 - B. FISCAL OVERVIEW5
- Section 5. ADMINISTRATIVE OBLIGATIONS6
 - A. CALIFORNIA DEBT AND INVESTMENT ADVISORY COMMISSION (“CDIAC”) REPORTING OBLIGATIONS6
 - B. SECONDARY MARKET REPORTING REQUIREMENTS (RULE 15C2-12)6
 - C. NOTICE OF SPECIAL TAX TO HOMEOWNERS6
- Section 6. APPENDICES7
- APPENDIX A.....BOUNDARY MAP
- APPENDIX B.....FISCAL YEAR 2022/23 REVENUE AND EXPENDITURES
- APPENDIX C.....SCHOOL FACILITIES CONSTRUCTION AND FUNDING STATUS

Section 1. PURPOSE AND OVERVIEW

The purpose of this Report is to provide the Board with an overview of Community Facilities District No. 2010-1 (“CFD No. 2010-1”) of the Temecula Valley Unified School District (the “School District” or “District”). This analysis was performed by Special District Financing & Administration, LLC (“SDFA”) as the Special Tax Consultant and CFD Administrator to the District in conjunction with District staff.

A. SUMMARY OF AUTHORIZING LEGISLATION

The Mello-Roos Community Facilities Act (“Act”) of 1982 came about as a response to the lack of adequate financing for public capital facilities and services in the post-Proposition 13 Era. State Senators Mello and Roos sponsored this Bill, which was enacted into law by the California Legislature and is now Sections 53311 through 53368.3 of the *California Government Code*. The Act, as amended, authorizes a local governmental agency, such as a school district or city, to form a Community Facilities District (“CFD”) within a defined set of boundaries for the purposes of providing public facilities and/or services. A CFD is formed for financing purposes only and is governed by the agency that formed it. Funding is provided through the levy of voter-approved special taxes. The Act also provides that multiple agencies can join together through a Joint Community Facilities Agreement (“JCFA”) to form one CFD.

B. HISTORICAL USE OF COMMUNITY FACILITY DISTRICTS AT TEMECULA VALLEY UNIFIED SCHOOL DISTRICT

Since 1990, the District has utilized the Act to form Mello-Roos Community Facilities Districts to provide for the funding of school facilities both directly and through the use of debt financing. The District has entered into JCFAs with other municipalities to allow for the formation of one CFD to fund various public facilities, such as water and sewer facilities, to be owned and operated by the controlling municipal agency.

Section 2. SUMMARY OF FORMATION PROCEEDINGS

Community Facilities District No. 2010-1 was formed in January 2011 to finance authorized school facilities.

A. FORMATION PROCEEDING ACTIONS

The following table provides a summary of actions taken by the Board of the School District to form Community Facilities District No. 2010-1:

TABLE I FORMATION SUMMARY DATA	
Proceedings Item	Date / Resolution No.
Resolution of Intention to Establish	12/14/2010 / Reso No. 2010-11/16
Resolution of Formation	1/08/2011 / Reso No. 2010-11/21
Date of Special Election	01/08/2011
County Fund Number	68-6546-FC

B. CFD LOCATION / BOUNDARIES

CFD No. 2010-1 is located south-east of Winchester Road (Highway 79), and near the intersection of Winchester Road and Skyview Road. Appendix A contains the adopted and recorded boundary map for Community Facilities District No. 2010-1.

C. AUTHORIZED FACILITIES

At the time of formation, a Special Tax Report is prepared which identifies the permitted use of the special tax funds collected and the proceeds from the issuance of debt. Additional formation documents, as well as documents adopted at the time of the issuance of any debt, may add additional specifics. The repayment of any issued debt is made from the special taxes levied within CFD No. 2010-1.

The Special Tax Report for Community Facilities District No. 2010-1 states that the special tax revenues collected within the District will fund school facilities necessary to meet increased demands placed upon the School District as a result of development within the District. The School Facilities may include, but are not limited to, the following: New elementary, middle, and high school facilities, central administration and support facilities as well as interim facilities, as necessary, including modernization thereof, if necessary together with land and all necessary equipment with an estimated useful life of five (5) years or longer to serve the properties within the District to house grades K through 12. Costs include site purchase and preparation, design, utility connection, general site development, facility construction, incidentals and financing.

Section 3. DEBT-ISSUANCE INFORMATION

After a CFD is formed and an acceptable amount of development occurs, the CFD may issue debt with the approval of the Board acting as the legislative body of the CFD. Many different types of debt may be issued, such as Special Tax Bonds or Certificates of Participation. The repayment of the debt is the obligation of the CFD and is not an obligation of the School District.

In April 2019, Special Tax Bonds were issued. The following table shows the 2019 Special Tax Bond issuance information for CFD No. 2010-1.

TABLE II DEBT-ISSUANCE INFORMATION	
Proceedings Item	2019 Special Tax Bonds
Dated Date of Bonds	04/17/2019
Final Maturity Date	09/01/2049
Bond Issue Amount	\$3,745,000.00
School Facilities Proceeds	\$3,244,840.71
Interest Rate Range	3.00% to 4.00%
Calculated Yield	3.50%
Payment Dates	March 1 & September 1
Subject to Arbitrage Calculation	Yes

Appendix C provides information on the use of the funds deposited into the school facilities account from the sale of bonds. As of July 1, 2023, \$3,485,000 of principal remains outstanding.

Section 4. DEVELOPMENT AND FISCAL STATUS

A. CURRENT DEVELOPMENT STATUS

CFD No. 2010-1 is fully developed. As of March 1, 2019, 167 building permits have been issued and therefore classified as Developed Property. To date, no lots have had the special tax obligation fully or partially prepaid and permanently satisfied.

B. FISCAL OVERVIEW

The special tax rates proposed to be levied in the coming fiscal year are presented to the Board annually and are set at an amount adequate to meet annual debt service requirements, cover administrative costs and fund school facilities directly from special taxes as authorized in the Rate and Method of Apportionment of Special Tax adopted at formation.

Appendix B provides a report of the funds collected and expended for Fiscal Year 2022/23. Appendix C contains the status of school facilities construction and funding which was authorized at the time of formation. This information is presented in compliance with SB165, the "Bond Accountability Act" which was codified in Government Code Sections 50075.1, 50075.3 and 50075.5. Appendix B also contains additional information which complies with Government Code Section 53343.1. The requirement to comply with Government Code Section 53343.1 is only applicable if requested by a person who resides in or owns property in CFD No. 2010-1. To date, this information has not been requested, but is being provided here for transparency purposes.

Section 5. ADMINISTRATIVE OBLIGATIONS

This section of the Report overviews administrative obligations under which the School District has an obligation to comply.

A. CALIFORNIA DEBT AND INVESTMENT ADVISORY COMMISSION (“CDIAC”) REPORTING OBLIGATIONS

California Government Code requires that a report entitled, Yearly Fiscal Status Report, be filed with the California Debt and Investment Advisory Commission (“CDIAC”) each October for debt issued after January 1, 1993, as well as posted on the School District website on or before January 31st. In addition, CDIAC also requires an Annual Debt Transparency Report to be filed each January for debt issued after January 1, 2017. The outstanding Temecula Valley Unified School District Community Facilities District No. 2010-1 2019 Special Tax Bonds issued in April 2019 are subject to both the filing of the Yearly Fiscal Status Report and the Annual Debt Transparency Report. The School District is in compliance with this requirement and such report is available on the School District’s website at <https://www.tvusd.k12.ca.us/domain/10996>.

B. SECONDARY MARKET REPORTING REQUIREMENTS (RULE 15C2-12)

Secondary Market Reporting Requirements are applicable to certain debt issues dated after July 3, 1995. The Temecula Valley Unified School District Community Facilities District No. 2010-1 2019 Special Tax Bonds issued in April 2019 are subject to this requirement. The School District is in compliance with this requirement and has timely posted the required data onto the Municipal Securities Rulemaking Board website, “EMMA” (Electronic Municipal Market Access) as required.

C. NOTICE OF SPECIAL TAX TO HOMEOWNERS

In accordance with Section 53340.2 of the Government Code, an agency will designate an office, department, or bureau to establish procedures to promptly respond to inquiries concerning current and future estimated tax liability. For purposes of enabling sellers of real property subject to the levy of special taxes to satisfy the notice requirements, the designated party will furnish a Notice of Special Tax to any individual requesting the notice within five (5) business days of receiving a request for such notice. The local agency may charge a reasonable fee for this service not to exceed ten dollars (\$10.00). SDFA is the direct contact to comply with all requests for this notice as well as general questions regarding CFD No. 2010-1.

Section 6. APPENDICES

Appendix A Boundary Map

Appendix B Fiscal Year 2022/23 Revenues and Expenditures

Appendix C School Facilities Construction and Funding Status

Appendix A: Boundary Map

City
SHEET 1 OF 3
11/29/2010

**PROPOSED BOUNDARY MAP OF
TEMECULA VALLEY UNIFIED SCHOOL DISTRICT
COMMUNITY FACILITIES DISTRICT NO. 2010-1
COUNTY OF RIVERSIDE
STATE OF CALIFORNIA**

FILED IN THE OFFICE OF THE SECRETARY OF THE BOARD OF EDUCATION OF THE TEMECULA VALLEY UNIFIED SCHOOL DISTRICT THIS 13TH DAY OF December 2010.

[Signature]
THURDAY, 11TH DAY OF DECEMBER 2010
SECRETARY OF THE BOARD OF EDUCATION
TEMECULA VALLEY UNIFIED SCHOOL DISTRICT
STATE OF CALIFORNIA

I HEREBY CERTIFY THAT THE WITHIN MAP SHOWING THE PROPOSED BOUNDARIES OF COMMUNITY FACILITIES DISTRICT NO. 2010-1 OF THE RIVERSIDE COUNTY, STATE OF CALIFORNIA WAS APPROVED BY THE BOARD OF EDUCATION OF THE TEMECULA VALLEY UNIFIED SCHOOL DISTRICT AT A REGULAR MEETING THEREOF HELD ON THE 13TH DAY OF December 2010, BY ITS RESOLUTION NO. 2010-11/13.

[Signature]
TIMOTHY RITTER
SECRETARY OF THE BOARD OF EDUCATION
TEMECULA VALLEY UNIFIED SCHOOL DISTRICT
STATE OF CALIFORNIA

FILED THIS 17TH DAY OF December 2010 AT THE HOUR OF 4:15 P.M. IN BOOK OF MAPS OF RIVERSIDE COUNTY INSTRUMENT NO. 2010-11/17, IN THE OFFICE OF THE COUNTY RECORDER OF RIVERSIDE COUNTY, STATE OF CALIFORNIA.

[Signature]
COUNTY RECORDER OF RIVERSIDE COUNTY

NOTE: FOR PARTICULARS OF LINES AND DIMENSIONS OF ASSESSOR'S PARCELS, REFERENCE IS MADE TO THE RIVERSIDE COUNTY ASSESSOR'S PARCEL MAPS.

ZIMMERMAN GROUP
LAND DEVELOPMENT SOLUTIONS
29202 CABOT ROAD, SUITE 630
LACUNA, CALIFORNIA 92547
WWW.ZIMMERMANGROUP.COM

LOT DESIGNATION	TAN ZONE	LOT NO.	TRACT	ASSESSOR'S PARCEL NUMBER
1	1	1	CP*	400-511-001
2	1	2	CP*	400-511-002
3	1	3	CP*	400-511-003
4	1	4	CP*	400-511-004
5	1	5	CP*	400-511-005
6	1	6	CP*	400-511-006
7	1	7	CP*	400-511-007
8	1	8	CP*	400-511-008
9	1	9	CP*	400-511-009
10	1	10	CP*	400-511-010
11	1	11	CP*	400-511-011
12	1	12	CP*	400-511-012
13	1	13	CP*	400-511-013
14	1	14	CP*	400-511-014
15	1	15	CP*	400-511-015
16	1	16	CP*	400-511-016
17	1	17	CP*	400-511-017
18	1	18	CP*	400-511-018
19	1	19	CP*	400-511-019
20	1	20	CP*	400-511-020
21	1	21	CP*	400-511-021
22	1	22	CP*	400-511-022
23	1	23	CP*	400-511-023
24	1	24	CP*	400-511-024
25	1	25	CP*	400-511-025
26	1	26	CP*	400-511-026
27	1	27	CP*	400-511-027
28	1	28	CP*	400-511-028
29	1	29	CP*	400-511-029
30	1	30	CP*	400-511-030
31	1	31	CP*	400-511-031
32	1	32	CP*	400-511-032
33	1	33	CP*	400-511-033
34	1	34	CP*	400-511-034
35	1	35	CP*	400-511-035
36	1	36	CP*	400-511-036
37	1	37	CP*	400-511-037
38	1	38	CP*	400-511-038
39	1	39	CP*	400-511-039
40	1	40	CP*	400-511-040
41	1	41	CP*	400-511-041
42	1	42	CP*	400-511-042
43	1	43	CP*	400-511-043
44	1	44	CP*	400-511-044
45	1	45	CP*	400-511-045
46	1	46	CP*	400-511-046
47	1	47	CP*	400-511-047
48	1	48	CP*	400-511-048
49	1	49	CP*	400-511-049
50	1	50	CP*	400-511-050

LOT DESIGNATION	TAN ZONE	LOT NO.	TRACT	ASSESSOR'S PARCEL NUMBER
51	1	51	CP*	400-511-051
52	1	52	CP*	400-511-052
53	1	53	CP*	400-511-053
54	1	54	CP*	400-511-054
55	1	55	CP*	400-511-055
56	1	56	CP*	400-511-056
57	1	57	CP*	400-511-057
58	1	58	CP*	400-511-058
59	1	59	CP*	400-511-059
60	1	60	CP*	400-511-060
61	1	61	CP*	400-511-061
62	1	62	CP*	400-511-062
63	1	63	CP*	400-511-063
64	1	64	CP*	400-511-064
65	1	65	CP*	400-511-065
66	1	66	CP*	400-511-066
67	1	67	CP*	400-511-067
68	1	68	CP*	400-511-068
69	1	69	CP*	400-511-069
70	1	70	CP*	400-511-070
71	1	71	CP*	400-511-071
72	1	72	CP*	400-511-072
73	1	73	CP*	400-511-073
74	1	74	CP*	400-511-074
75	1	75	CP*	400-511-075
76	1	76	CP*	400-511-076
77	1	77	CP*	400-511-077
78	1	78	CP*	400-511-078
79	1	79	CP*	400-511-079
80	1	80	CP*	400-511-080
81	1	81	CP*	400-511-081
82	1	82	CP*	400-511-082
83	1	83	CP*	400-511-083
84	1	84	CP*	400-511-084
85	1	85	CP*	400-511-085
86	1	86	CP*	400-511-086
87	1	87	CP*	400-511-087
88	1	88	CP*	400-511-088
89	1	89	CP*	400-511-089
90	1	90	CP*	400-511-090
91	1	91	CP*	400-511-091
92	1	92	CP*	400-511-092
93	1	93	CP*	400-511-093
94	1	94	CP*	400-511-094
95	1	95	CP*	400-511-095
96	1	96	CP*	400-511-096
97	1	97	CP*	400-511-097
98	1	98	CP*	400-511-098
99	1	99	CP*	400-511-099
100	1	100	CP*	400-511-100

LOT DESIGNATION	TAN ZONE	LOT NO.	TRACT	ASSESSOR'S PARCEL NUMBER
101	1	101	CP*	400-511-101
102	1	102	CP*	400-511-102
103	1	103	CP*	400-511-103
104	1	104	CP*	400-511-104
105	1	105	CP*	400-511-105
106	1	106	CP*	400-511-106
107	1	107	CP*	400-511-107
108	1	108	CP*	400-511-108
109	1	109	CP*	400-511-109
110	1	110	CP*	400-511-110
111	1	111	CP*	400-511-111
112	1	112	CP*	400-511-112
113	1	113	CP*	400-511-113
114	1	114	CP*	400-511-114
115	1	115	CP*	400-511-115
116	1	116	CP*	400-511-116
117	1	117	CP*	400-511-117
118	1	118	CP*	400-511-118
119	1	119	CP*	400-511-119
120	1	120	CP*	400-511-120
121	1	121	CP*	400-511-121
122	1	122	CP*	400-511-122
123	1	123	CP*	400-511-123
124	1	124	CP*	400-511-124
125	1	125	CP*	400-511-125
126	1	126	CP*	400-511-126
127	1	127	CP*	400-511-127
128	1	128	CP*	400-511-128
129	1	129	CP*	400-511-129
130	1	130	CP*	400-511-130
131	1	131	CP*	400-511-131
132	1	132	CP*	400-511-132
133	1	133	CP*	400-511-133
134	1	134	CP*	400-511-134
135	1	135	CP*	400-511-135
136	1	136	CP*	400-511-136
137	1	137	CP*	400-511-137
138	1	138	CP*	400-511-138
139	1	139	CP*	400-511-139
140	1	140	CP*	400-511-140
141	1	141	CP*	400-511-141
142	1	142	CP*	400-511-142
143	1	143	CP*	400-511-143
144	1	144	CP*	400-511-144
145	1	145	CP*	400-511-145
146	1	146	CP*	400-511-146
147	1	147	CP*	400-511-147
148	1	148	CP*	400-511-148
149	1	149	CP*	400-511-149
150	1	150	CP*	400-511-150

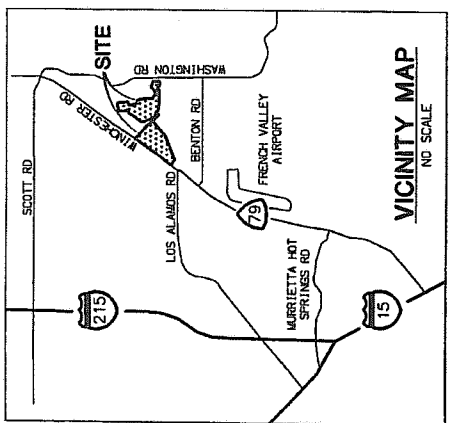
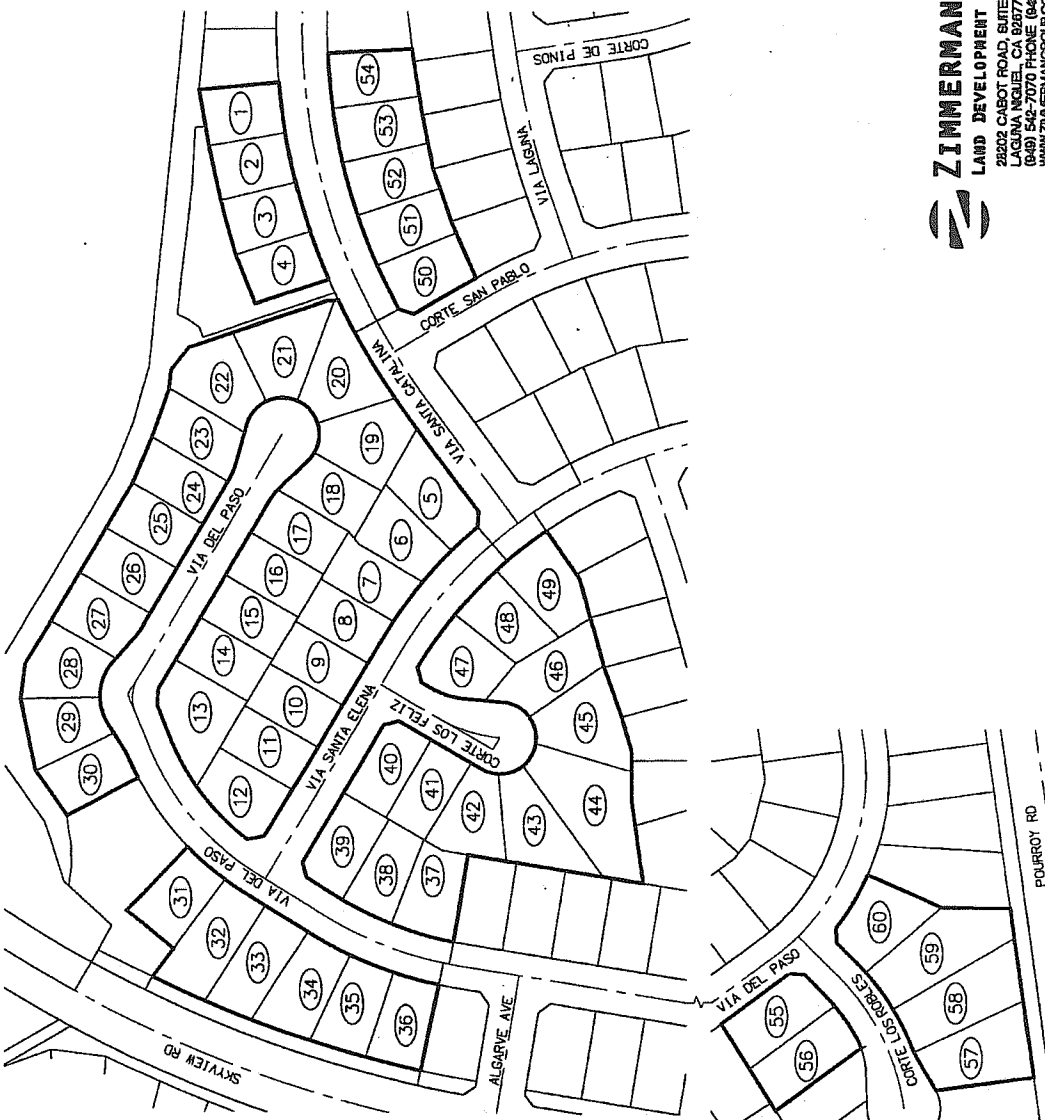
LOT DESIGNATION	TAN ZONE	LOT NO.	TRACT	ASSESSOR'S PARCEL NUMBER
151	1	151	CP*	400-511-151
152	1	152	CP*	400-511-152
153	1	153	CP*	400-511-153
154	1	154	CP*	400-511-154
155	1	155	CP*	400-511-155
156	1	156	CP*	400-511-156
157	1	157	CP*	400-511-157
158	1	158	CP*	400-511-158
159	1	159	CP*	400-511-159
160	1	160	CP*	400-511-160
161	1	161	CP*	400-511-161
162	1	162	CP*	400-511-162
163	1	163	CP*	400-511-163
164	1	164	CP*	400-511-164
165	1	165	CP*	400-511-165
166	1	166	CP*	400-511-166
167	1	167	CP*	400-511-167
168	1	168	CP*	400-511-168
169	1	169	CP*	400-511-169
170	1	170	CP*	400-511-170
171	1	171	CP*	400-511-171
172	1	172	CP*	400-511-172
173	1	173	CP*	400-511-173
174	1	174	CP*	400-511-174
175	1	175	CP*	400-511-175
176	1	176	CP*	400-511-176
177	1	177	CP*	400-511-177
178	1	178	CP*	400-511-178
179	1	179	CP*	400-511-179
180	1	180	CP*	400-511-180
181	1	181	CP*	400-511-181
182	1	182	CP*	400-511-182
183	1	183	CP*	400-511-183
184	1	184	CP*	400-511-184
185	1	185	CP*	400-511-185
186	1	186	CP*	400-511-186
187	1	187	CP*	400-511-187
188	1	188	CP*	400-511-188
189	1	189	CP*	400-511-189
190	1	190	CP*	400-511-190
191	1	191	CP*	400-511-191
192	1	192	CP*	400-511-192
193	1	193	CP*	400-511-193
194	1	194	CP*	400-511-194
195	1	195	CP*	400-511-195
196	1	196	CP*	400-511-196
197	1	197	CP*	400-511-197
198	1	198	CP*	400-511-198
199	1	199	CP*	400-511-199
200	1	200	CP*	400-511-200
201	1	201	CP*	400-511-201
202	1	202	CP*	400-511-202
203	1	203	CP*	400-511-203
204	1	204	CP*	400-511-204
205	1	205	CP*	400-511-205
206	1	206	CP*	400-511-206
207	1	207	CP*	400-511-207

* BELLASOL CONDOMINIUM PLAN RECORDED 1/23/2008 AS DOC #2008-0013858

74
101

SHEET 2 OF 3
11/29/2010

**PROPOSED BOUNDARY MAP OF
TEMECULA VALLEY UNIFIED SCHOOL DISTRICT
COMMUNITY FACILITIES DISTRICT NO. 2010-1**
COUNTY OF RIVERSIDE
STATE OF CALIFORNIA



LEGEND
○ LOT DESIGNATION
— LOT BOUNDARY



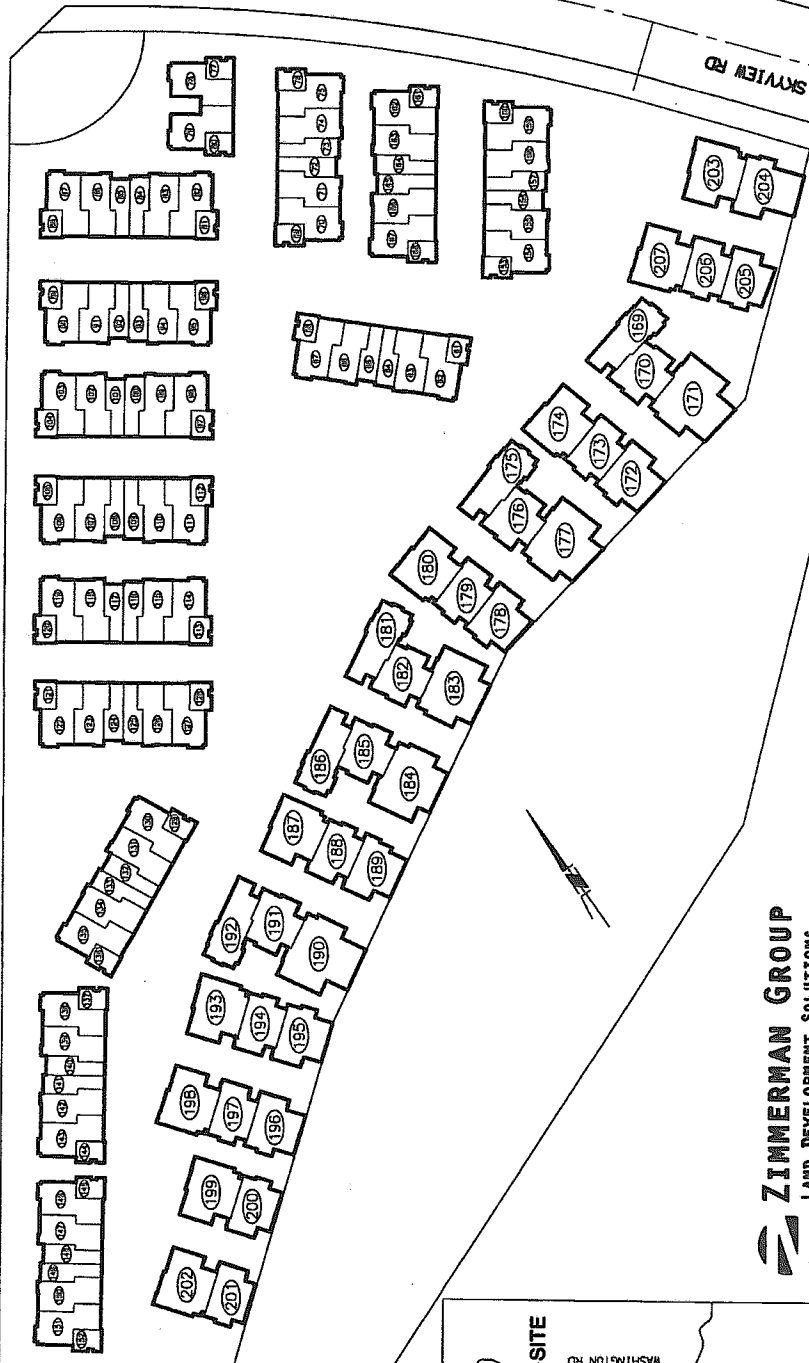
ZIMMERMAN GROUP
LAND DEVELOPMENT SOLUTIONS
28202 CABOT ROAD, SUITE 820
LAGUNA HILLS, CA 92657
(949) 542-7070 PHONE (949) 542-7076 FAX
WWW.ZIMMERMANGROUP.COM

74
102

SHEET 3 OF 3
11/29/2010

**PROPOSED BOUNDARY MAP OF
TEMECULA VALLEY UNIFIED SCHOOL DISTRICT
COMMUNITY FACILITIES DISTRICT NO. 2010-1**
COUNTY OF RIVERSIDE
STATE OF CALIFORNIA

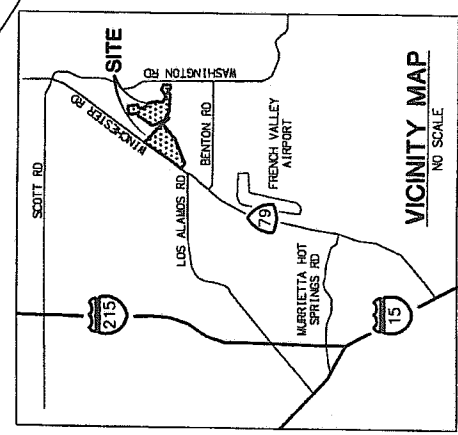
WINCHESTER RD / STATE HWY 79



SKYVIEW RD

ZIMMERMAN GROUP
LAND DEVELOPMENT SOLUTIONS
28200 CASOTT ROAD, SUITE 620
LAGUNA HILLS, CA 92653
(949) 542-7070 PHONE (949) 542-7076 FAX
WWW.ZIMMERMANGROUP.COM

LEGEND
○ LOT DESIGNATION
--- CTD BOUNDARY



Appendix B: Fiscal Year 2022/23 Revenues and Expenditures

Appendix B

Temecula Valley Unified School District
Community Facilities District No. 2010-1
 Revenues and Expenditures

	Fiscal Year 2022/23
Beginning Balance (July 1st):	519,757.59
Revenue:	
Special Taxes Collected ⁽¹⁾	280,259.63
Interest Earnings ⁽²⁾	1,053.27
Total Revenue	\$281,312.90
TK-8 Pha Cor To Be Determined	
Expenditures:	
Facilities	0.00
Bonded Indebtedness	
Principal	90,000.00
Interest	122,900.02
Administration	
Cost of Collection ⁽³⁾	30,922.11
Other	0.00
Total Expenditures	\$243,822.13
Ending Balance (June 30th) ⁽⁴⁾ :	\$557,248.36

Footnotes:

- (1) Represents the total amount of special taxes received from the County of Riverside along with the payment of delinquent special taxes directly to the CFD. These payments may include interest earnings on current year special tax payments, as well as penalties and interest on delinquent prior year special taxes paid.
- (2) Includes interest earned and accrued interest paid on investments.
- (3) Cost of Collection includes: the administrative expenses of the School District, the cost of an independent financial consultant, bank fees and charges, as well as the cost of legal fees as needed or required. The Cost of Collection does not include the cost of placing the levy onto the roll of the County of Riverside as these charges are collected by the County as a reduction in the amount of special taxes received annually.
- (4) See Page 2 for balance details by account.

Appendix B

Temecula Valley Unified School District
Community Facilities District No. 2010-1
Fiscal Year End Balances by Account⁽¹⁾

	Fiscal Year 2022/23
Funds and Accounts as of June 30th:	
Special Tax Fund	175,169.09
Principal Account	0.05
Interest Account	0.04
Bond Proceeds: School Facilities Account	0.00
Administrative Expense Fund	33,550.76
Direct Funding: School Facilities Account ⁽²⁾	134,260.56
Reserve Fund	214,267.86
Escrow Fund	0.00
<u>Ending Balance (June 30th)</u>	<u>\$557,248.36</u>

Footnotes:

- (1) All funds are held by US Bank acting as Fiscal Agent for the District, except for a portion of the School Facilities Account for Direct Funding which represents special taxes received in excess of annual administration expenses prior to the issuance of debt.
- (2) Direct funding of School Facilities represents special tax funds annually deposited from the levy of special taxes in excess of debt service and required administration. Use of such funds is described in Appendix C.

Appendix C: School Facilities Construction and Funding Status

Appendix C

Temecula Valley Unified School District
Community Facilities District No. 2010-1
 School Facilities Construction and Funding Status

Projects Authorized and Funded through the Issuance of Debt
--

Project Funding from Proceeds: Activity and Balance	<u>Fiscal Year 2022/23</u>
Beginning Balance (July 1st)	0.00
Deposits (Interest, Accrued Interest, Etc.)	0.00
Expenditures	0.00
Ending Balance (June 30th)	\$0.00

Summary of Projects Authorized and Funded through Debt Issuance:

<u>Site</u>	<u>Description</u>	<u>Status</u>	<u>Approx. % of Total</u>
TK-8 Phase 1	New Construction	Complete	To Be Determined

Projects Authorized and Funded Directly from Special Taxes

Project Funding from Direct Funding: Activity and Balance	<u>Fiscal Year 2022/23</u>
Beginning Balance (July 1st)	71,755.07
Deposits ⁽¹⁾	62,505.49
Expenditures	0.00
Ending Balance (June 30th)	\$134,260.56

Fiscal Year 2022/23 Projects Authorized and Funded through Direct Funding:

<u>Site</u>	<u>Description</u>	<u>Status</u>	<u>Approx. % of Total</u>
<i>No expenditures - Fiscal Year 2022/23</i>			

Projected Projects Authorized and Funded through Fund Balances:

The above identified fund balances will be used to directly or indirectly benefit property within the CFD. Identified balances have not yet been dedicated but have been found to be needed to mitigate the impact of the development on school facilities. See the 2021 School Facilities Master Plan as to possible projects to be funded when adequate funding is available.

Footnote:

- (1) Represents the Special Taxes collected less expenditures within the fiscal year, both as described in Appendix B, including interest earnings and accrued interest paid. This total does not match the net change in total fund balance shown in Appendix B due to ending balances held in individual funds.