

COPY

87/90

PROPOSED BOUNDARY MAP OF TEMECULA VALLEY UNIFIED SCHOOL DISTRICT COMMUNITY FACILITIES DISTRICT NO. 2021-1

COUNTY OF RIVERSIDE
STATE OF CALIFORNIA

FILED IN THE OFFICE OF THE CLERK OF THE BOARD OF
EDUCATION OF THE TEMECULA VALLEY UNIFIED SCHOOL
DISTRICT THIS 22nd DAY OF October, 2021.

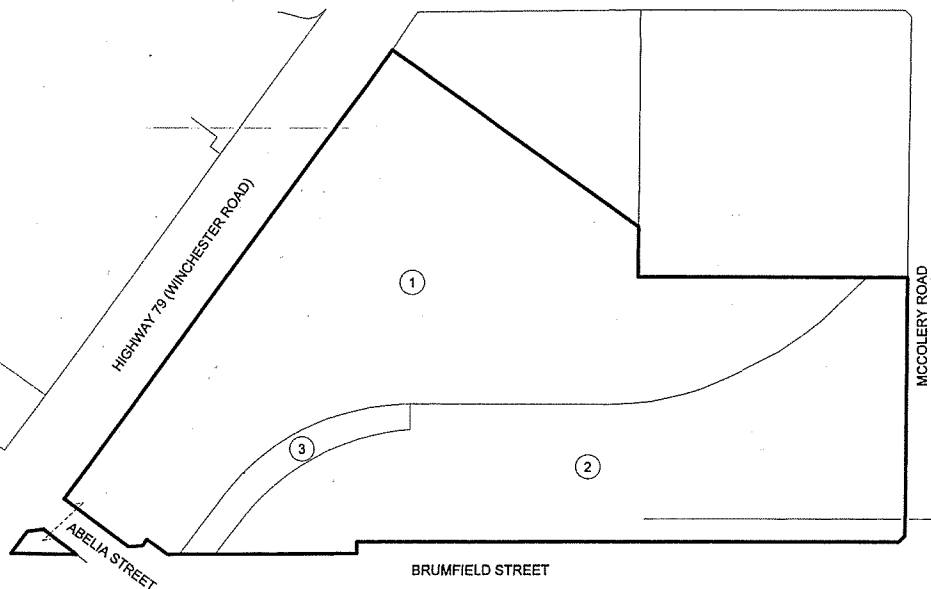
Sandra White
CLERK OF THE BOARD OF EDUCATION
TEMECULA VALLEY UNIFIED SCHOOL DISTRICT
STATE OF CALIFORNIA

I HEREBY CERTIFY THAT THE WITHIN MAP SHOWING THE
BOUNDARIES OF COMMUNITY FACILITIES DISTRICT NO. 2021-1,
RIVERSIDE COUNTY, STATE OF CALIFORNIA, WAS APPROVED
BY THE BOARD OF EDUCATION OF THE TEMECULA VALLEY
UNIFIED SCHOOL DISTRICT AT A REGULAR MEETING THEREOF,
HELD ON THE 9th DAY OF November, 2021, BY ITS
RESOLUTION NO. 2021-22120

Sandra White
CLERK OF THE BOARD OF EDUCATION
TEMECULA VALLEY UNIFIED SCHOOL DISTRICT
STATE OF CALIFORNIA

FILED THIS 18 DAY OF November, 2021, AT
THE HOUR OF 3:10 O'CLOCK P.M. IN BOOK
87 OF MAPS OF ASSESSMENT AND COMMUNITY
FACILITIES DISTRICTS AT PAGES 90, AND AS
INSTRUMENT NO. 2021-0688283, IN THE OFFICES OF
THE COUNTY RECORDER OF RIVERSIDE COUNTY, STATE OF
CALIFORNIA.
FEE: \$ 9

Maria V. S.
COUNTY RECORDER OF THE COUNTY OF RIVERSIDE
Peter Aldana, Assessor-Clerk Recorder



LEGEND:

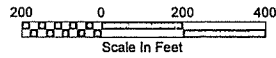
①

LOT NUMBER

—————

COMMUNITY FACILITIES
DISTRICT BOUNDARY

LOT DESIGNATION	
LOT NO.	ASSESSOR'S PARCEL NO.
1	476-010-072
2	476-010-073
3	476-010-074



SDFA

SPECIAL DISTRICT FINANCING
& ADMINISTRATION

437 WEST GRAND AVENUE
ESCONDIDO, CALIFORNIA 92025
TELEPHONE: (760)233-2630
FAX: (760)233-2631

NOTE: FOR PARTICULARS OF LINES AND
DIMENSIONS OF ASSESSOR'S PARCELS,
REFERENCE IS MADE TO THE RIVERSIDE
COUNTY ASSESSOR'S PARCEL MAPS.

SHEET	1 OF 1
DATE	SEPTEMBER 2021
JOB NO.	TVCFD 2021-1