



**FISCAL YEAR 2021/22  
ANNUAL SB165 COMPLIANCE REPORT**

**TEMECULA VALLEY UNIFIED SCHOOL DISTRICT  
COMMUNITY FACILITIES DISTRICT NO. 2010-1**

---

December 13, 2022

**Prepared For:**

Janet Dixon  
Director of Facilities Development  
Temecula Valley Unified School District  
31350 Rancho Vista Road  
Temecula, CA 92592

**Prepared By:**

Special District Financing &  
Administration  
437 West Grand Avenue  
Escondido, CA 92025

# TABLE OF CONTENTS

- Section 1. PURPOSE AND OVERVIEW .....2
  - A. SUMMARY OF AUTHORIZING LEGISLATION .....2
  - B. HISTORICAL USE OF COMMUNITY FACILITY DISTRICTS AT TEMECULA VALLEY UNIFIED SCHOOL DISTRICT ..... 2
- Section 2. SUMMARY OF FORMATION PROCEEDINGS.....3
  - A. FORMATION PROCEEDING ACTIONS .....3
  - B. CFD LOCATION / BOUNDARIES .....3
  - C. AUTHORIZED FACILITIES .....3
- Section 3. DEBT-ISSUANCE INFORMATION ..... 4
- Section 4. DEVELOPMENT AND FISCAL STATUS .....5
  - A. CURRENT DEVELOPMENT STATUS .....5
  - B. FISCAL OVERVIEW .....5
- Section 5. ADMINISTRATIVE OBLIGATIONS .....6
  - A. CALIFORNIA DEBT AND INVESTMENT ADVISORY COMMISSION (“CDIAC”) REPORTING OBLIGATIONS .....6
  - B. SECONDARY MARKET REPORTING REQUIREMENTS (RULE 15C2-12) .....6
  - C. NOTICE OF SPECIAL TAX TO HOMEOWNERS .....6
- Section 6. APPENDICES .....7
- APPENDIX A.....BOUNDARY MAP
- APPENDIX B.....FISCAL YEAR 2021/22 REVENUE AND EXPENDITURES
- APPENDIX C.....SCHOOL FACILITIES CONSTRUCTION AND FUNDING STATUS

---

## **Section 1. PURPOSE AND OVERVIEW**

---

The purpose of this Report is to provide the Board with an overview of Community Facilities District No. 2010-1 (“CFD No. 2010-1”) of the Temecula Valley Unified School District (the “School District” or “District”). This analysis was performed by Special District Financing & Administration, LLC (“SDFA”) as the Special Tax Consultant and CFD Administrator to the District in conjunction with District staff.

### **A. SUMMARY OF AUTHORIZING LEGISLATION**

The Mello-Roos Community Facilities Act (“Act”) of 1982 came about as a response to the lack of adequate financing for public capital facilities and services in the post-Proposition 13 Era. State Senators Mello and Roos sponsored this Bill, which was enacted into law by the California Legislature and is now Sections 53311 through 53368.3 of the *California Government Code*. The Act, as amended, authorizes a local governmental agency, such as a school district or city, to form a Community Facilities District (“CFD”) within a defined set of boundaries for the purposes of providing public facilities and/or services. A CFD is formed for financing purposes only and is governed by the agency that formed it. Funding is provided through the levy of voter-approved special taxes. The Act also provides that multiple agencies can join together through a Joint Community Facilities Agreement (“JCFA”) to form one CFD.

### **B. HISTORICAL USE OF COMMUNITY FACILITY DISTRICTS AT TEMECULA VALLEY UNIFIED SCHOOL DISTRICT**

Since 1990, the District has utilized the Act to form Mello-Roos Community Facilities Districts to provide for the funding of school facilities both directly and through the use of debt financing. The District has entered into JCFAs with other municipalities to allow for the formation of one CFD to fund various public facilities, such as water and sewer facilities, to be owned and operated by the controlling municipal agency.

## Section 2. SUMMARY OF FORMATION PROCEEDINGS

Community Facilities District No. 2010-1 was formed in January 2011 to finance authorized school facilities.

### A. FORMATION PROCEEDING ACTIONS

The following table provides a summary of actions taken by the Board of the School District to form Community Facilities District No. 2010-1:

TABLE I FORMATION SUMMARY DATA	
Proceedings Item	Date / Resolution No.
Resolution of Intention to Establish	12/14/2010 / Reso No. 2010-11/16
Resolution of Formation	1/08/2011 / Reso No. 2010-11/21
Date of Special Election	01/08/2011
County Fund Number	68-6546-FC

### B. CFD LOCATION / BOUNDARIES

CFD No. 2010-1 is located south-east of Winchester Road (Highway 79), and near the intersection of Winchester Road and Skyview Road. Appendix A contains the adopted and recorded boundary map for Community Facilities District No. 2010-1.

### C. AUTHORIZED FACILITIES

At the time of formation, a Special Tax Report is prepared which identifies the permitted use of the special tax funds collected and the proceeds from the issuance of debt. Additional formation documents, as well as documents adopted at the time of the issuance of any debt, may add additional specifics. The repayment of any issued debt is made from the special taxes levied within CFD No. 2010-1.

The Special Tax Report for Community Facilities District No. 2010-1 states that the special tax revenues collected within the District will fund school facilities necessary to meet increased demands placed upon the School District as a result of development within the District. The School Facilities may include, but are not limited to, the following: New elementary, middle, and high school facilities, central administration and support facilities as well as interim facilities, as necessary, including modernization thereof, if necessary together with land and all necessary equipment with an estimated useful life of five (5) years or longer to serve the properties within the District to house grades K through 12. Costs include site purchase and preparation, design, utility connection, general site development, facility construction, incidentals and financing.

## Section 3. DEBT-ISSUANCE INFORMATION

After a CFD is formed and an acceptable amount of development occurs, the CFD may issue debt with the approval of the Board acting as the legislative body of the CFD. Many different types of debt may be issued, such as Special Tax Bonds or Certificates of Participation. The repayment of the debt is the obligation of the CFD and is not an obligation of the School District.

In April 2019, Special Tax Bonds were issued. The following table shows the 2019 Special Tax Bond issuance information for CFD No. 2010-1.

<b>TABLE II DEBT-ISSUANCE INFORMATION</b>	
<b>Proceedings Item</b>	<b>2019 Special Tax Bonds</b>
Dated Date of Bonds	04/17/2019
Final Maturity Date	09/01/2049
Bond Issue Amount	\$3,745,000.00
School Facilities Proceeds	\$3,244,840.71
Interest Rate Range	3.00% to 4.00%
Calculated Yield	3.50%
Payment Dates	March 1 & September 1
Subject to Arbitrage Calculation	Yes

Appendix C provides information on the use of the funds deposited into the school facilities account from the sale of bonds. As of July 1, 2022, \$3,575,000 of principal remains outstanding.

---

## **Section 4. DEVELOPMENT AND FISCAL STATUS**

---

### **A. CURRENT DEVELOPMENT STATUS**

CFD No. 2010-1 is fully developed. As of March 1, 2019, 167 building permits have been issued and therefore classified as Developed Property.

### **B. FISCAL OVERVIEW**

The special tax rates proposed to be levied in the coming fiscal year are presented to the Board annually and are set at an amount adequate to meet annual debt service requirements, cover administrative costs and fund school facilities directly from special taxes as authorized in the Rate and Method of Apportionment of Special Tax adopted at formation.

Appendix B provides a report of the funds collected and expended for Fiscal Year 2021/22. Appendix C contains the status of school facilities construction and funding which was authorized at the time of formation. This information is presented in compliance with SB165, the "Bond Accountability Act" which was codified in Government Code Sections 50075.1, 50075.3 and 50075.5. Appendix B also contains additional information which complies with Government Code Section 53343.1. The requirement to comply with Government Code Section 53343.1 is only applicable if requested by a person who resides in or owns property in CFD No. 2010-1. To date, this information has not been requested, but is being provided here for transparency purposes.

## **Section 5. ADMINISTRATIVE OBLIGATIONS**

This section of the Report overviews administrative obligations under which the School District has an obligation to comply.

### **A. CALIFORNIA DEBT AND INVESTMENT ADVISORY COMMISSION (“CDIAC”) REPORTING OBLIGATIONS**

California Government Code requires that a report entitled, Yearly Fiscal Status Report, be filed with the California Debt and Investment Advisory Commission (“CDIAC”) each October for debt issued after January 1, 1993, as well as posted on the School District website on or before January 31<sup>st</sup>. In addition, CDIAC also requires an Annual Debt Transparency Report to be filed each January for debt issued after January 1, 2017. The outstanding Temecula Valley Unified School District Community Facilities District No. 2010-1 2019 Special Tax Bonds issued in April 2019 are subject to both the filing of the Yearly Fiscal Status Report and the Annual Debt Transparency Report. The School District is in compliance with this requirement and such report is available on the School District’s website at <https://www.tvusd.k12.ca.us/domain/10996>.

### **B. SECONDARY MARKET REPORTING REQUIREMENTS (RULE 15C2-12)**

Secondary Market Reporting Requirements are applicable to certain debt issues dated after July 3, 1995. The Temecula Valley Unified School District Community Facilities District No. 2010-1 2019 Special Tax Bonds issued in April 2019 are subject to this requirement. The School District is in compliance with this requirement and has timely posted the required data onto the Municipal Securities Rulemaking Board website, “EMMA” (Electronic Municipal Market Access) as required.

### **C. NOTICE OF SPECIAL TAX TO HOMEOWNERS**

In accordance with Section 53340.2 of the Government Code, an agency will designate an office, department, or bureau to establish procedures to promptly respond to inquiries concerning current and future estimated tax liability. For purposes of enabling sellers of real property subject to the levy of special taxes to satisfy the notice requirements, the designated party will furnish a Notice of Special Tax to any individual requesting the notice within five (5) business days of receiving a request for such notice. The local agency may charge a reasonable fee for this service not to exceed ten dollars (\$10.00). SDFA is the direct contact to comply with all requests for this notice as well as general questions regarding CFD No. 2010-1.

---

## **Section 6. APPENDICES**

---

**Appendix A    Boundary Map**

**Appendix B    Fiscal Year 2021/22 Revenues and Expenditures**

**Appendix C    School Facilities Construction and Funding Status**



## **Appendix A: Boundary Map**

City  
SHEET 1 OF 3  
11/29/2010

PROPOSED BOUNDARY MAP OF  
TEMECULA VALLEY UNIFIED SCHOOL DISTRICT  
COMMUNITY FACILITIES DISTRICT NO. 2010-1  
COUNTY OF RIVERSIDE  
STATE OF CALIFORNIA

FILED IN THE OFFICE OF THE SECRETARY OF THE BOARD OF EDUCATION OF THE TEMECULA VALLEY UNIFIED SCHOOL DISTRICT THIS 13<sup>TH</sup> DAY OF December 2010.

*[Signature]*  
THURDAY, 11<sup>TH</sup> DAY OF DECEMBER 2010  
SECRETARY OF THE BOARD OF EDUCATION  
TEMECULA VALLEY UNIFIED SCHOOL DISTRICT  
STATE OF CALIFORNIA

I HEREBY CERTIFY THAT THE WITHIN MAP SHOWING THE PROPOSED BOUNDARIES OF COMMUNITY FACILITIES DISTRICT NO. 2010-1 OF THE TEMECULA VALLEY UNIFIED SCHOOL DISTRICT WAS APPROVED BY THE BOARD OF EDUCATION OF THE TEMECULA VALLEY UNIFIED SCHOOL DISTRICT AT A REGULAR MEETING THEREOF HELD ON THE 13<sup>TH</sup> DAY OF December 2010, BY ITS RESOLUTION NO. 2010-11/13.

*[Signature]*  
TIMOTHY RITTER  
SECRETARY OF THE BOARD OF EDUCATION  
TEMECULA VALLEY UNIFIED SCHOOL DISTRICT  
STATE OF CALIFORNIA

FILED THIS 11<sup>TH</sup> DAY OF December 2010 AT THE HOUR OF 4:15 P.M. IN BOOK OF MAPS OF PARCELS, ASSESSMENT AND COMMUNITY FACILITIES DISTRICTS AND AS INSTRUMENT NO. 2010-0013858, IN THE OFFICE OF THE COUNTY RECORDER OF RIVERSIDE COUNTY, STATE OF CALIFORNIA.

*[Signature]*  
COUNTY RECORDER OF RIVERSIDE COUNTY

NOTE: FOR PARTICULARS OF LINES AND DIMENSIONS OF ASSESSOR'S PARCELS, REFERENCE IS MADE TO THE RIVERSIDE COUNTY ASSESSOR'S PARCEL MAPS.

**ZIMMERMAN GROUP**  
LAND DEVELOPMENT SOLUTIONS  
29202 CABOT ROAD, SUITE 630  
LACUNA, CALIFORNIA 92547  
(951) 545-7070 PHONE (951) 545-7076 FAX  
WWW.ZIMMERMANGROUP.COM

LOT DESIGNATION	TAN ZONE	LOT NO.	TRACT	ASSESSOR'S PARCEL NUMBER
1	1	51	CP*	480-550-013
2	1	52	CP*	480-550-014
3	1	53	CP*	480-550-015
4	1	54	CP*	480-550-016
5	1	55	CP*	480-550-017
6	1	56	CP*	480-550-018
7	1	57	CP*	480-550-019
8	1	58	CP*	480-550-020
9	1	59	CP*	480-550-021
10	1	60	CP*	480-550-022
11	1	61	CP*	480-550-023
12	1	62	CP*	480-550-024
13	1	63	CP*	480-550-025
14	1	64	CP*	480-550-026
15	1	65	CP*	480-550-027
16	1	66	CP*	480-550-028
17	1	67	CP*	480-550-029
18	1	68	CP*	480-550-030
19	1	69	CP*	480-550-031
20	1	70	CP*	480-550-032
21	1	71	CP*	480-550-033
22	1	72	CP*	480-550-034
23	1	73	CP*	480-550-035
24	1	74	CP*	480-550-036
25	1	75	CP*	480-550-037
26	1	76	CP*	480-550-038
27	1	77	CP*	480-550-039
28	1	78	CP*	480-550-040
29	1	79	CP*	480-550-041
30	1	80	CP*	480-550-042
31	1	81	CP*	480-550-043
32	1	82	CP*	480-550-044
33	1	83	CP*	480-550-045
34	1	84	CP*	480-550-046
35	1	85	CP*	480-550-047
36	1	86	CP*	480-550-048
37	1	87	CP*	480-550-049
38	1	88	CP*	480-550-050
39	1	89	CP*	480-550-051
40	1	90	CP*	480-550-052
41	1	91	CP*	480-550-053
42	1	92	CP*	480-550-054
43	1	93	CP*	480-550-055
44	1	94	CP*	480-550-056
45	1	95	CP*	480-550-057
46	1	96	CP*	480-550-058
47	1	97	CP*	480-550-059
48	1	98	CP*	480-550-060
49	1	99	CP*	480-550-061
50	1	100	CP*	480-550-062

LOT DESIGNATION	TAN ZONE	LOT NO.	TRACT	ASSESSOR'S PARCEL NUMBER
101	1	101	CP*	480-551-063
102	1	102	CP*	480-551-064
103	1	103	CP*	480-551-065
104	1	104	CP*	480-551-066
105	1	105	CP*	480-551-067
106	1	106	CP*	480-551-068
107	1	107	CP*	480-551-069
108	1	108	CP*	480-551-070
109	1	109	CP*	480-551-071
110	1	110	CP*	480-551-072
111	1	111	CP*	480-551-073
112	1	112	CP*	480-551-074
113	1	113	CP*	480-551-075
114	1	114	CP*	480-551-076
115	1	115	CP*	480-551-077
116	1	116	CP*	480-551-078
117	1	117	CP*	480-551-079
118	1	118	CP*	480-551-080
119	1	119	CP*	480-551-081
120	1	120	CP*	480-551-082
121	1	121	CP*	480-551-083
122	1	122	CP*	480-551-084
123	1	123	CP*	480-551-085
124	1	124	CP*	480-551-086
125	1	125	CP*	480-551-087
126	1	126	CP*	480-551-088
127	1	127	CP*	480-551-089
128	1	128	CP*	480-551-090
129	1	129	CP*	480-551-091
130	1	130	CP*	480-551-092
131	1	131	CP*	480-551-093
132	1	132	CP*	480-551-094
133	1	133	CP*	480-551-095
134	1	134	CP*	480-551-096
135	1	135	CP*	480-551-097
136	1	136	CP*	480-551-098
137	1	137	CP*	480-551-099
138	1	138	CP*	480-551-100
139	1	139	CP*	480-551-101
140	1	140	CP*	480-551-102
141	1	141	CP*	480-551-103
142	1	142	CP*	480-551-104
143	1	143	CP*	480-551-105
144	1	144	CP*	480-551-106
145	1	145	CP*	480-551-107
146	1	146	CP*	480-551-108
147	1	147	CP*	480-551-109
148	1	148	CP*	480-551-110
149	1	149	CP*	480-551-111
150	1	150	CP*	480-551-112

LOT DESIGNATION	TAN ZONE	LOT NO.	TRACT	ASSESSOR'S PARCEL NUMBER
151	1	151	CP*	480-551-113
152	1	152	CP*	480-551-114
153	1	153	CP*	480-551-115
154	1	154	CP*	480-551-116
155	1	155	CP*	480-551-117
156	1	156	CP*	480-551-118
157	1	157	CP*	480-551-119
158	1	158	CP*	480-551-120
159	1	159	CP*	480-551-121
160	1	160	CP*	480-551-122
161	1	161	CP*	480-551-123
162	1	162	CP*	480-551-124
163	1	163	CP*	480-551-125
164	1	164	CP*	480-551-126
165	1	165	CP*	480-551-127
166	1	166	CP*	480-551-128
167	1	167	CP*	480-551-129
168	1	168	CP*	480-551-130
169	1	169	CP*	480-551-131
170	1	170	CP*	480-551-132
171	1	171	CP*	480-551-133
172	1	172	CP*	480-551-134
173	1	173	CP*	480-551-135
174	1	174	CP*	480-551-136
175	1	175	CP*	480-551-137
176	1	176	CP*	480-551-138
177	1	177	CP*	480-551-139
178	1	178	CP*	480-551-140
179	1	179	CP*	480-551-141
180	1	180	CP*	480-551-142
181	1	181	CP*	480-551-143
182	1	182	CP*	480-551-144
183	1	183	CP*	480-551-145
184	1	184	CP*	480-551-146
185	1	185	CP*	480-551-147
186	1	186	CP*	480-551-148
187	1	187	CP*	480-551-149
188	1	188	CP*	480-551-150
189	1	189	CP*	480-551-151
190	1	190	CP*	480-551-152
191	1	191	CP*	480-551-153
192	1	192	CP*	480-551-154
193	1	193	CP*	480-551-155
194	1	194	CP*	480-551-156
195	1	195	CP*	480-551-157
196	1	196	CP*	480-551-158
197	1	197	CP*	480-551-159
198	1	198	CP*	480-551-160
199	1	199	CP*	480-551-161
200	1	200	CP*	480-551-162
201	1	201	CP*	480-551-163
202	1	202	CP*	480-551-164
203	1	203	CP*	480-551-165
204	1	204	CP*	480-551-166
205	1	205	CP*	480-551-167
206	1	206	CP*	480-551-168
207	1	207	CP*	480-551-169

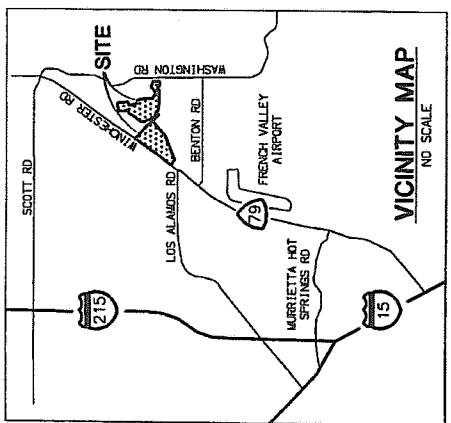
LOT DESIGNATION	TAN ZONE	LOT NO.	TRACT	ASSESSOR'S PARCEL NUMBER
208	1	208	CP*	480-551-170
209	1	209	CP*	480-551-171
210	1	210	CP*	480-551-172
211	1	211	CP*	480-551-173
212	1	212	CP*	480-551-174
213	1	213	CP*	480-551-175
214	1	214	CP*	480-551-176
215	1	215	CP*	480-551-177
216	1	216	CP*	480-551-178
217	1	217	CP*	480-551-179
218	1	218	CP*	480-551-180
219	1	219	CP*	480-551-181
220	1	220	CP*	480-551-182
221	1	221	CP*	480-551-183
222	1	222	CP*	480-551-184
223	1	223	CP*	480-551-185
224	1	224	CP*	480-551-186
225	1	225	CP*	480-551-187
226	1	226	CP*	480-551-188
227	1	227	CP*	480-551-189
228	1	228	CP*	480-551-190
229	1	229	CP*	480-551-191
230	1	230	CP*	480-551-192
231	1	231	CP*	480-551-193
232	1	232	CP*	480-551-194
233	1	233	CP*	480-551-195
234	1	234	CP*	480-551-196
235	1	235	CP*	480-551-197
236	1	236	CP*	480-551-198
237	1	237	CP*	480-551-199
238	1	238	CP*	480-551-200
239	1	239	CP*	480-551-201
240	1	240	CP*	480-551-202

\* BELLASOL CONDOMINIUM PLAN RECORDED 1/23/2008 AS DOC #2008-0013858

74  
101  
city

SHEET 2 OF 3  
11/29/2010

**PROPOSED BOUNDARY MAP OF  
TEMECULA VALLEY UNIFIED SCHOOL DISTRICT  
COMMUNITY FACILITIES DISTRICT NO. 2010-1**  
COUNTY OF RIVERSIDE  
STATE OF CALIFORNIA



**LEGEND**  
 ○ LOT DESIGNATION  
 — LOT BOUNDARY



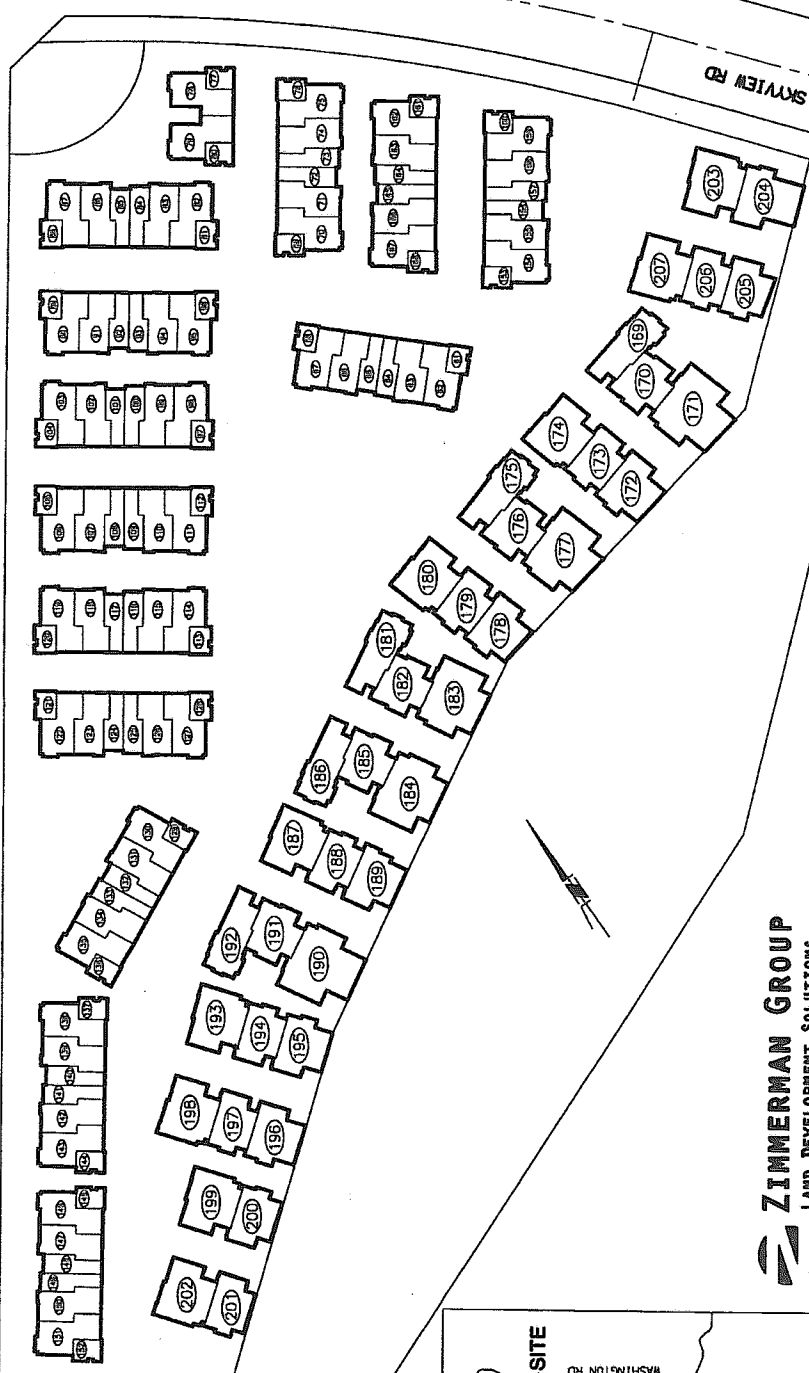
**ZIMMERMAN GROUP**  
 LAND DEVELOPMENT SOLUTIONS  
 28202 CABOT ROAD, SUITE 820  
 LAGUNA HILLS, CA 92657  
 (949) 542-7070 PHONE (949) 542-7076 FAX  
 WWW.ZIMMERMANGROUP.COM

74  
102

SHEET 3 OF 3  
11/29/2010

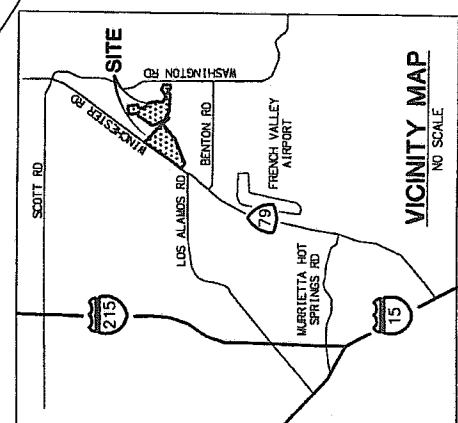
**PROPOSED BOUNDARY MAP OF  
TEMECULA VALLEY UNIFIED SCHOOL DISTRICT  
COMMUNITY FACILITIES DISTRICT NO. 2010-1**  
COUNTY OF RIVERSIDE  
STATE OF CALIFORNIA

WINCHESTER RD / STATE HWY 79



SKYVIEW RD

**LEGEND**  
○ LOT DESIGNATION  
--- CTD BOUNDARY



**ZIMMERMAN GROUP**  
LAND DEVELOPMENT SOLUTIONS  
28200 CASOTT ROAD, SUITE 620  
LAGUNA HILLS, CA 92653  
(949) 542-7070 PHONE (949) 542-7076 FAX  
WWW.ZIMMERMANGROUP.COM

## **Appendix B: Fiscal Year 2021/22 Revenues and Expenditures**

## Appendix B

Temecula Valley Unified School District  
**Community Facilities District No. 2010-1**  
Revenues and Expenditures

	Fiscal Year 2021/22
<u>Beginning Balance (July 1st):</u>	<u>\$496,793.61</u>
Revenue:	
Special Taxes Collected <sup>(1)</sup>	271,948.06
Interest Earnings <sup>(2)</sup>	190.37
<u>        Total Revenue</u>	<u>\$272,138.43</u>
Expenditures:	
Facilities	0.00
Bonded Indebtedness	
Principal	85,000.00
Interest	125,520.72
Administration	
Cost of Collection <sup>(3)</sup>	38,653.73
Other	0.00
<u>        Total Expenditures</u>	<u>\$249,174.45</u>
<u>Ending Balance (June 30th)<sup>(4)</sup>:</u>	<u>\$519,757.59</u>

### Footnotes:

- (1) Represents the total amount of special taxes received from the County of Riverside along with the payment of delinquent special taxes directly to the CFD. These payments may include interest earnings on current year special tax payments, as well as penalties and interest on delinquent prior year special taxes paid.
- (2) Includes interest earned and accrued interest paid on investments.
- (3) Cost of Collection includes: the administrative expenses of the School District, the cost of an independent financial consultant, bank fees and charges, as well as the cost of legal fees as needed or required. The Cost of Collection does not include the cost of placing the levy onto the roll of the County of Riverside as these charges are collected by the County as a reduction in the amount of special taxes received annually.
- (4) See Page 2 for balance details by account.

## Appendix B

Temecula Valley Unified School District  
**Community Facilities District No. 2010-1**  
Fiscal Year End Balances by Account<sup>(1)</sup>

	Fiscal Year 2021/22
<b>Funds and Accounts as of June 30th:</b>	
Special Tax Fund	207,420.61
Principal Account	0.00
Interest Account	2,985.82
Bond Proceeds: School Facilities Account	0.00
Administrative Expense Fund	23,339.03
Direct Funding: School Facilities Account <sup>(2)</sup>	71,755.07
Reserve Fund	214,257.06
Escrow Fund	
<u>Ending Balance (June 30th)</u>	<u>\$519,757.59</u>

### Footnotes:

- (1) All funds are held by US Bank acting as Fiscal Agent for the District, except for a portion of the School Facilities Account for Direct Funding which represents special taxes received in excess of annual administration expenses prior to the issuance of debt.
- (2) Direct funding of School Facilities represents special tax funds annually deposited from the levy of special taxes in excess of debt service and required administration. Use of such funds is described in Appendix C.

## **Appendix C: School Facilities Construction and Funding Status**



## Appendix C

Temecula Valley Unified School District  
**Community Facilities District No. 2010-1**  
 School Facilities Construction and Funding Status

<b>Projects Authorized and Funded through the Issuance of Debt</b>
--

<b>Project Funding from Proceeds: Activity and Balance</b>	<u>Fiscal Year 2021/22</u>
Beginning Balance (July 1st)	0.00
Deposits (Interest, Accrued Interest, Etc.)	0.00
Expenditures	0.00
Ending Balance (June 30th)	\$0.00

**Summary of Projects Authorized and Funded through Debt Issuance:**

<u>Site</u>	<u>Description</u>	<u>Status</u>	<u>Approx. % of Total</u>
TK-8	New Construction		<i>In Progress</i>

<b>Projects Authorized and Funded Directly from Special Taxes</b>
---

<b>Project Funding from Direct Funding: Activity and Balance</b>	<u>Fiscal Year 2021/22</u>
Beginning Balance (July 1st)	42,434.60
Deposits <sup>(1)</sup>	29,320.47
Expenditures	0.00
Ending Balance (June 30th)	\$71,755.07

**Fiscal Year 2021/22 Projects Authorized and Funded through Direct Funding:**

<u>Site</u>	<u>Description</u>	<u>Status</u>	<u>Approx. % of Total</u>
	<i>No expenditures - Fiscal Year 2021/22</i>		

**Projected Projects Authorized and Funded through Fund Balances:**

The above identified fund balances will be used to directly or indirectly benefit property within the CFD. Identified balances have not yet been dedicated but have been found to be needed to mitigate the impact of the development on school facilities. See the 2021 School Facilities Master Plan as to possible projects to be funded when adequate funding is available.

**Footnote:**

- (1) Represents the Special Taxes collected less expenditures within the fiscal year, both as described in Appendix B, including interest earnings and accrued interest paid. This total does not match the net change in total fund balance shown in Appendix B due to ending balances held in individual funds.