

**FISCAL YEAR 2020/21  
ANNUAL SB165 COMPLIANCE REPORT**

**TEMECULA VALLEY UNIFIED SCHOOL DISTRICT  
COMMUNITY FACILITIES DISTRICT NO. 2014-1**

---

December 14, 2021

**Prepared For:**

Janet Dixon  
Director of Facilities Development  
Temecula Valley Unified School District  
31350 Rancho Vista Road  
Temecula, CA 92592

**Prepared By:**

Special District Financing &  
Administration  
437 West Grand Avenue  
Escondido, CA 92025

## TABLE OF CONTENTS

Section 1.	PURPOSE AND OVERVIEW .....	3
A.	SUMMARY OF AUTHORIZING LEGISLATION .....	3
B.	HISTORICAL USE OF COMMUNITY FACILITY DISTRICTS AT TEMECULA VALLEY UNIFIED SCHOOL DISTRICT .....	3
Section 2.	SUMMARY OF FORMATION PROCEEDINGS.....	4
A.	FORMATION PROCEEDING ACTIONS .....	4
B.	CFD LOCATION / BOUNDARIES .....	4
C.	AUTHORIZED FACILITIES .....	4
Section 3.	DEBT-ISSUANCE INFORMATION .....	6
Section 4.	DEVELOPMENT AND FISCAL STATUS .....	7
A.	CURRENT DEVELOPMENT STATUS .....	7
B.	FISCAL OVERVIEW .....	7
Section 5.	ADMINISTRATIVE OBLIGATIONS .....	8
A.	CALIFORNIA DEBT AND INVESTMENT ADVISORY COMMISSION (“CDIAC”) REPORTING OBLIGATIONS .....	8
B.	SECONDARY MARKET REPORTING REQUIREMENTS (RULE 15C2-12) .....	8
C.	NOTICE OF SPECIAL TAX TO HOMEOWNERS .....	8
Section 6.	APPENDICES .....	9
APPENDIX A.....	BOUNDARY MAP	
APPENDIX B.....	FISCAL YEAR 2020/21 REVENUE AND EXPENDITURES	
APPENDIX C.....	SCHOOL FACILITIES CONSTRUCTION AND FUNDING STATUS	

## **Section 1. PURPOSE AND OVERVIEW**

The purpose of this Report is to provide the Board with an overview of Community Facilities District No. 2014-1 (“CFD No. 2014-1”) of the Temecula Valley Unified School District (the “School District” or “District”). This analysis was performed by Special District Financing & Administration, LLC (“SDFA”) as the Special Tax Consultant and CFD Administrator to the District in conjunction with District staff.

### **A. SUMMARY OF AUTHORIZING LEGISLATION**

The Mello-Roos Community Facilities Act (“Act”) of 1982 came about as a response to the lack of adequate financing for public capital facilities and services in the post-Proposition 13 Era. State Senators Mello and Roos sponsored this Bill, which was enacted into law by the California Legislature and is now Sections 53311 through 53368.3 of the *California Government Code*. The Act, as amended, authorizes a local governmental agency, such as a school district or city, to form a Community Facilities District (“CFD”) within a defined set of boundaries for the purposes of providing public facilities and/or services. A CFD is formed for financing purposes only and is governed by the agency that formed it. Funding is provided through the levy of voter-approved special taxes. The Act also provides that multiple agencies can join together through a Joint Community Facilities Agreement (“JCFA”) to form one CFD.

### **B. HISTORICAL USE OF COMMUNITY FACILITY DISTRICTS AT TEMECULA VALLEY UNIFIED SCHOOL DISTRICT**

Since 1990, the District has utilized the Act to form Mello-Roos Community Facilities Districts to provide for the funding of school facilities both directly and through the use of debt financing. The District has entered into JCFA's with other municipalities to allow for the formation of one CFD to fund various public facilities, such as water and sewer facilities, to be owned and operated by the controlling municipal agency.

## Section 2. SUMMARY OF FORMATION PROCEEDINGS

Community Facilities District No. 2014-1 was formed in June 2014 to finance authorized school facilities.

### A. FORMATION PROCEEDING ACTIONS

The following table provides a summary of actions taken by the Board of the School District to form Community Facilities District No. 2014-1:

TABLE I FORMATION SUMMARY DATA	
Proceedings Item	Date / Resolution No.
Resolution of Intention to Establish	5/06/2014 / Reso No. 2013-14/23
Resolution of Formation	6/17/2014 / Reso No. 2013-14/37
Date of Special Election	06/17/2014
County Fund Number	68-2715-FC

### B. CFD LOCATION / BOUNDARIES

CFD No. 2014-1 is located south of Winchester Road (Highway 79) and west and east of Abelia Street. Appendix A contains the adopted and recorded boundary map for Community Facilities District No. 2014-1.

### C. AUTHORIZED FACILITIES

At the time of formation, a Special Tax Report is prepared which identifies the permitted use of the special tax funds collected and the proceeds from the issuance of debt. Additional formation documents, as well as documents adopted at the time of the issuance of any debt, may add additional specifics. The repayment of any issued debt is made from the special taxes levied within CFD No. 2014-1.

The Special Tax Report for Community Facilities District No. 2014-1 states that the type of facilities proposed to be planned for, designed, acquired, constructed, leased, expanded, improved, rehabilitated and financed by CFD No. 2014-1 of the District under the Mello-Roos Community Facilities Act of 1982 ("Act") are, as of follows:

Facilities means design, planning, acquisition, installation, construction and/or financing of interim and permanent facilities, including, but not limited to, classrooms, multi-purpose, administration and auxiliary space at a school, central support and administrative facilities and special education facilities, together with furniture, equipment and technology, in addition to all land or interests in land required for the construction of such on-site or off-site facilities and all land or interests in land required to be provided by CFD No. 2014-1 as mitigation of impacts

associated with the development of such facilities all with a useful life of five years or longer.

Facilities may also include the attributable costs of engineering, design, planning, materials testing, coordination, construction staking and construction, together with the expenses related to issuance and sale of any "debt," as defined in Section 53317(d) of the Act, including underwriters' discount, appraisals, market studies, reserve fund, capitalized interest, bond counsel, special tax consultant, bond and official statement printing, administrative expenses of CFD No. 2014-1 and bond trustee(s) or fiscal agent(s) related to CFD No. 2014-1, and any such debt and all other incidental expenses.

The facilities are representative of the types of improvements to be furnished by CFD No. 2014-1. Addition, deletion or modification of descriptions of such facilities may be made consistent with the requirements of the District, including CFD No. 2014-1, and the Act.

## Section 3. DEBT-ISSUANCE INFORMATION

After a CFD is formed and an acceptable amount of development occurs, the CFD may issue debt with the approval of the Board acting as the legislative body of the CFD. Many different types of debt may be issued, such as Special Tax Bonds or Certificates of Participation. The repayment of the debt is the obligation of the CFD and is not an obligation of the School District.

In August 2018, Special Tax Bonds were issued. The following table shows the 2018 Special Tax Bond issuance information for CFD No. 2014-1.

TABLE II DEBT-ISSUANCE INFORMATION	
Proceedings Item	2018 Special Tax Bonds
Dated Date of Bonds	08/15/2018
Final Maturity Date	09/01/2050
Bond Issue Amount	\$7,700,000.00
School Facilities Proceeds	\$7,526,056.15
Interest Rate Range	2.00% to 5.00%
Calculated Yield	3.54%
Payment Dates	March 1 & September 1
Subject to Arbitrage Calculation	Yes

Appendix C provides information on the use of the funds deposited into the school facilities account from the sale of bonds. As of July 1, 2021, \$7,535,000 of principal remains outstanding.

---

## **Section 4. DEVELOPMENT AND FISCAL STATUS**

---

### **A. CURRENT DEVELOPMENT STATUS**

CFD No. 2014-1 is fully developed. As of March 1, 2020, 451 building permits have been issued and therefore classified as Developed Property.

### **B. FISCAL OVERVIEW**

The special tax rates proposed to be levied in the coming fiscal year are presented to the Board annually and are set at an amount adequate to meet annual debt service requirements, cover administrative costs and fund school facilities directly from special taxes as authorized in the Rate and Method of Apportionment of Special Tax adopted at formation.

Appendix B provides a report of the funds collected and expended for Fiscal Year 2020/21. Appendix C contains the status of school facilities construction and funding which was authorized at the time of formation. This information is presented in compliance with SB165, the "Bond Accountability Act" which was codified in Government Code Sections 50075.1, 50075.3 and 50075.5. Appendix B also contains additional information which complies with Government Code Section 53343.1. The requirement to comply with Government Code Section 53343.1 is only applicable if requested by a person who resides in or owns property in CFD No. 2014-1. To date, this information has not been requested, but is being provided here for transparency purposes.

## **Section 5. ADMINISTRATIVE OBLIGATIONS**

This section of the Report overviews administrative obligations under which the School District has an obligation to comply.

### **A. CALIFORNIA DEBT AND INVESTMENT ADVISORY COMMISSION (“CDIAC”) REPORTING OBLIGATIONS**

California Government Code requires that a report entitled, Yearly Fiscal Status Report, be filed with the California Debt and Investment Advisory Commission (“CDIAC”) each October for debt issued after January 1, 1993, as well as posted on the School District website on or before January 31<sup>st</sup>. In addition, CDIAC also requires an Annual Debt Transparency Report to be filed each January for debt issued after January 1, 2017. The outstanding Temecula Valley Unified School District Community Facilities District No. 2014-1 2018 Special Tax Bonds issued in August 2018 are subject to both the filing of the Yearly Fiscal Status Report and the Annual Debt Transparency Report. The School District is in compliance with this requirement and such report is available on the School District’s website at <https://www.tvusd.k12.ca.us/domain/10996>.

### **B. SECONDARY MARKET REPORTING REQUIREMENTS (RULE 15C2-12)**

Secondary Market Reporting Requirements are applicable to certain debt issues dated after July 3, 1995. The Temecula Valley Unified School District Community Facilities District No. 2014-1 2018 Special Tax Bonds issued in August 2018 are subject to this requirement. The School District is in compliance with this requirement and has timely posted the required data onto the Municipal Securities Rulemaking Board website, “EMMA” (Electronic Municipal Market Access) as required.

### **C. NOTICE OF SPECIAL TAX TO HOMEOWNERS**

In accordance with Section 53340.2 of the Government Code, an agency will designate an office, department, or bureau to establish procedures to promptly respond to inquiries concerning current and future estimated tax liability. For purposes of enabling sellers of real property subject to the levy of special taxes to satisfy the notice requirements, the designated party will furnish a Notice of Special Tax to any individual requesting the notice within five (5) business days of receiving a request for such notice. The local agency may charge a reasonable fee for this service not to exceed ten dollars (\$10.00). SDFA is the direct contact to comply with all requests for this notice as well as general questions regarding CFD No. 2014-1.



---

## **Section 6. APPENDICES**

---

**Appendix A    Boundary Map**

**Appendix B    Fiscal Year 2020/21 Revenues and Expenditures**

**Appendix C    School Facilities Construction and Funding Status**

## **Appendix A: Boundary Map**

copy 75

PROPOSED BOUNDARY MAP OF  
TEMECULA VALLEY UNIFIED SCHOOL DISTRICT  
COMMUNITY FACILITIES DISTRICT NO. 2014-1  
COUNTY OF RIVERSIDE  
STATE OF CALIFORNIA

FILED IN THE OFFICE OF THE CLERK OF THE BOARD OF  
EDUCATION OF THE TEMECULA VALLEY UNIFIED SCHOOL  
DISTRICT THIS 14 DAY OF MARCH, 2014.

*[Signature]*  
CLERK OF THE BOARD OF EDUCATION  
TEMECULA VALLEY UNIFIED SCHOOL DISTRICT  
STATE OF CALIFORNIA

I HEREBY CERTIFY THAT THE WITHIN MAP SHOWING THE  
BOUNDARIES OF COMMUNITY FACILITIES DISTRICT NO. 2014-1,  
TEMECULA VALLEY UNIFIED SCHOOL DISTRICT, WAS PREPARED  
BY THE BOARD OF EDUCATION OF THE TEMECULA VALLEY  
UNIFIED SCHOOL DISTRICT AT A REGULAR MEETING THEREOF,  
HELD ON THE 14 DAY OF MARCH, 2014, BY ITS  
RESOLUTION NO. 1402-14-173.

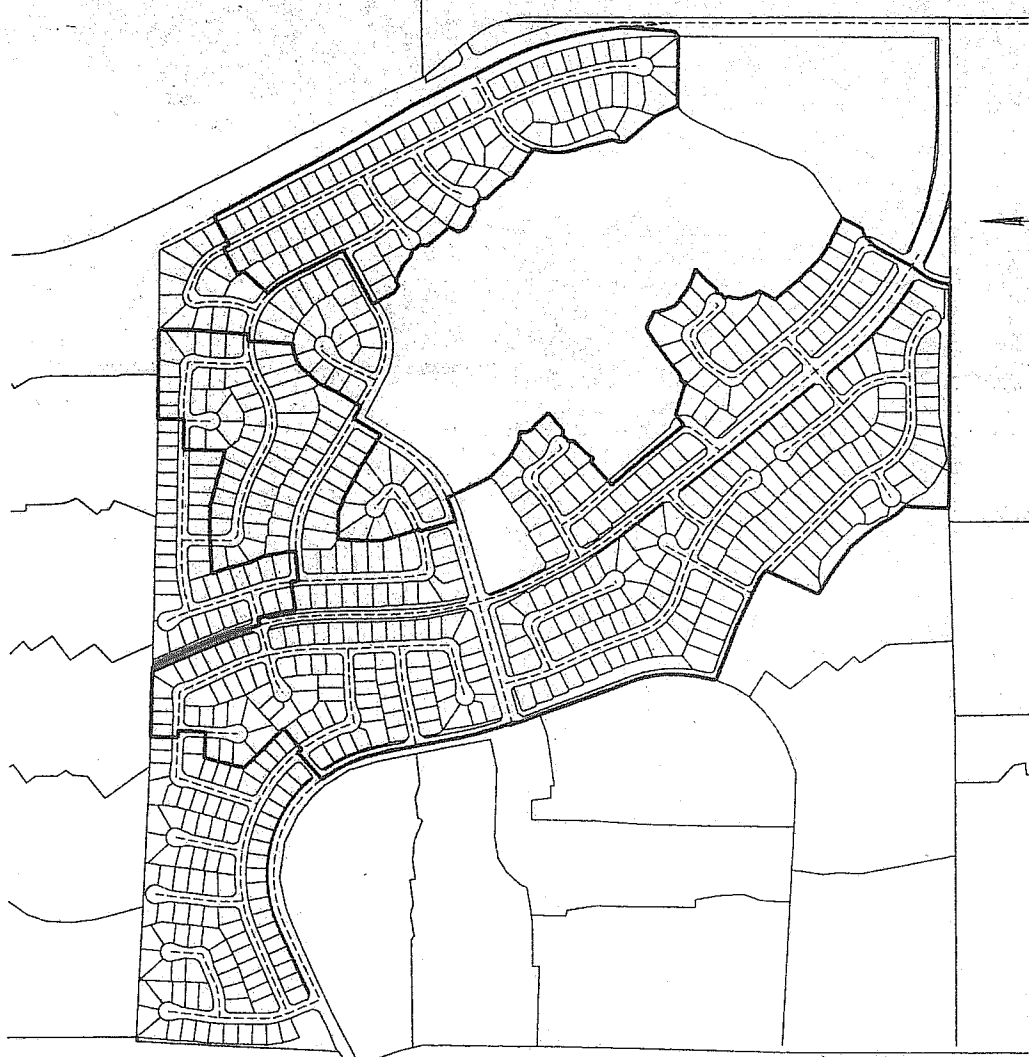
*[Signature]*  
CLERK OF THE BOARD OF EDUCATION  
TEMECULA VALLEY UNIFIED SCHOOL DISTRICT  
STATE OF CALIFORNIA

FILED THIS 14 DAY OF MARCH, 2014,  
AT THE HOUR OF 10:30 O'CLOCK A.M. IN  
BOOK 77 OF MAPS FOR ASSESSMENT AND COMMUNITY  
FACILITIES DISTRICTS AT PAGES 5-12 OF INSTRUMENT  
NO. 2014-0175510, IN THE OFFICE OF THE COUNTY  
RECORDER OF RIVERSIDE COUNTY, STATE OF CALIFORNIA.  
FEE \$ 241.00

*[Signature]*  
COUNTY RECORDER OF THE COUNTY OF RIVERSIDE

LEGEND:

COMMUNITY FACILITIES  
DISTRICT BOUNDARY



**SDFA**

SPECIAL DISTRICT FINANCING  
& ADMINISTRATION

437 WEST GRAND AVENUE  
ESCONDIDO, CALIFORNIA 92025  
TELEPHONE: (760)233-2830  
FAX: (760)233-2831



SHEET	1 OF 8
DATE	MARCH 2014
JOB NO.	CFD2014-0314

Book 77, Pgs. 5-12 INSTRUMENT NO. 2014-0175510

PROPOSED BOUNDARY MAP OF  
TEMECULA VALLEY UNIFIED SCHOOL DISTRICT  
COMMUNITY FACILITIES DISTRICT NO. 2014-1  
COUNTY OF RIVERSIDE  
STATE OF CALIFORNIA

LOT NO.	APN
1	476110004
2	476120011
3	476120012
4	476110006
5	476120014
6	476110008
7	476120016
8	476120017
9	476120018
10	476120019
11	476120021
12	476120022
13	476120023
14	476120024
15	476120025
16	476120026
17	476120027
18	476120028
19	476120029
20	476120030
21	476120031
22	476120032
23	476120033
24	476120034
25	476120035
26	476120036
27	476120037
28	476120038
29	476120039
30	476120040
31	476120041
32	476120042
33	476120043
34	476120044
35	476120045
36	476120046
37	476120047
38	476120048
39	476120049
40	476120050
41	476120051
42	476120052
43	476120053
44	476120054
45	476120055
46	476120056
47	476120057
48	476120058
49	476120059
50	476120060
51	476120061

LOT NO.	APN
52	476120011
53	476120012
54	476120013
55	476120014
56	476120015
57	476120016
58	476120017
59	476120018
60	476120019
61	476120020
62	476120021
63	476120022
64	476120023
65	476120024
66	476120025
67	476120026
68	476120027
69	476120028
70	476120029
71	476120030
72	476120031
73	476120032
74	476120033
75	476120034
76	476120035
77	476120036
78	476120037
79	476120038
80	476120039
81	476120040
82	476120041
83	476120042
84	476120043
85	476120044
86	476120045
87	476120046
88	476120047
89	476120048
90	476120049
91	476120050
92	476120051
93	476120052
94	476120053
95	476120054
96	476120055
97	476120056
98	476120057
99	476120058
100	476120059
101	476120060
102	476120061
103	476120062
104	476120063
105	476120064
106	476120065
107	476120066
108	476120067
109	476120068
110	476120069
111	476120070

LOT NO.	APN
112	476150014
113	476150015
114	476150016
115	476150017
116	476150018
117	476150019
118	476150020
119	476150021
120	476150022
121	476150023
122	476150024
123	476150025
124	476150026
125	476150027
126	476150028
127	476150029
128	476150030
129	476150031
130	476150032
131	476150033
132	476150034
133	476150035
134	476150036
135	476150037
136	476150038
137	476150039
138	476150040
139	476150041
140	476150042
141	476150043
142	476150044
143	476150045
144	476150046
145	476150047
146	476150048
147	476150049
148	476150050
149	476150051
150	476150052
151	476150053
152	476150054
153	476150055
154	476150056
155	476150057
156	476150058
157	476150059
158	476150060
159	476150061
160	476150062
161	476150063
162	476150064
163	476150065
164	476150066
165	476150067
166	476150068
167	476150069
168	476150070
169	476150071
170	476150072
171	476150073
172	476150074
173	476150075
174	476150076

LOT NO.	APN
175	476150034
176	476150035
177	476150036
178	476150037
179	476150038
180	476150039
181	476150040
182	476150041
183	476150042
184	476150043
185	476150044
186	476150045
187	476150046
188	476150047
189	476150048
190	476150049
191	476150050
192	476150051
193	476150052
194	476150053
195	476150054
196	476150055
197	476150056
198	476150057
199	476150058
200	476150059
201	476150060
202	476150061
203	476150062
204	476150063
205	476150064
206	476150065
207	476150066
208	476150067
209	476150068
210	476150069
211	476150070
212	476150071
213	476150072
214	476150073
215	476150074
216	476150075
217	476150076
218	476150077
219	476150078
220	476150079
221	476150080
222	476150081
223	476150082
224	476150083
225	476150084
226	476150085
227	476150086
228	476150087
229	476150088
230	476150089
231	476150090
232	476150091
233	476150092
234	476150093

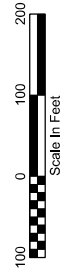
LOT NO.	APN
235	476150055
236	476150056
237	476150057
238	476150058
239	476150059
240	476150060
241	476150061
242	476150062
243	476150063
244	476150064
245	476150065
246	476150066
247	476150067
248	476150068
249	476150069
250	476150070
251	476150071
252	476150072
253	476150073
254	476150074
255	476150075
256	476150076
257	476150077
258	476150078
259	476150079
260	476150080
261	476150081
262	476150082
263	476150083
264	476150084
265	476150085
266	476150086
267	476150087
268	476150088
269	476150089
270	476150090
271	476150091
272	476150092
273	476150093
274	476150094
275	476150095
276	476150096
277	476150097
278	476150098
279	476150099
280	476150100
281	476150101
282	476150102
283	476150103
284	476150104
285	476150105
286	476150106
287	476150107
288	476150108
289	476150109
290	476150110
291	476150111
292	476150112
293	476150113
294	476150114
295	476150115
296	476150116
297	476150117

LOT NO.	APN
298	476300004
299	476300005
300	476300006
301	476300007
302	476300008
303	476300009
304	476300010
305	476300011
306	476300012
307	476300013
308	476300014
309	476300015
310	476300016
311	476300017
312	476300018
313	476300019
314	476300020
315	476300021
316	476300022
317	476300023
318	476300024
319	476300025
320	476300026
321	476300027
322	476300028
323	476300029
324	476300030
325	476300031
326	476300032
327	476300033
328	476300034
329	476300035
330	476300036
331	476300037
332	476300038
333	476300039
334	476300040
335	476300041
336	476300042
337	476300043
338	476300044
339	476300045
340	476300046
341	476300047
342	476300048
343	476300049
344	476300050
345	476300051
346	476300052
347	476300053
348	476300054
349	476300055
350	476300056
351	476300057
352	476300058
353	476300059
354	476300060
355	476300061
356	476300062
357	476300063
358	476300064
359	476300065

LOT NO.	APN
360	476300077
361	476300078
362	476300079
363	476300080
364	476300081
365	476300082
366	476300083
367	476300084
368	476300085
369	476300086
370	476300087
371	476300088
372	476300089
373	476300090
374	476300091
375	476300092
376	476300093
377	476300094
378	476300095
379	476300096
380	476300097
381	476300098
382	476300099
383	476300100
384	476300101
385	476300102
386	476300103
387	476300104
388	476300105
389	476300106
390	476300107
391	476300108
392	476300109
393	476300110
394	476300111
395	476300112
396	476300113
397	476300114
398	476300115
399	476300116
400	476300117
401	476300118
402	476300119
403	476300120
404	476300121
405	476300122
406	476300123
407	476300124
408	476300125
409	476300126
410	476300127
411	476300128
412	476300129
413	476300130
414	476300131
415	476300132
416	476300133
417	476300134
418	476300135
419	476300136
420	476300137
421	476300138

LOT NO.	APN
422	476400032
423	476400033
424	476400034
425	476400035
426	476400036
427	476400037
428	476400038
429	476400039
430	476400040
431	476400041
432	476400042
433	476400043
434	476400044
435	476400045
436	476400046
437	476400047
438	476400048
439	476400049
440	476400050
441	476400051
442	476400052
443	476400053
444	476400054
445	476400055
446	476400056
447	476400057
448	476400058
449	476400059
450	476400060
451	476400061
452	476400062
453	476400063
454	476400064
455	476400065
456	476400066
457	476400067
458	476400068
459	476400069
460	476400070
461	476400071
462	476400072

PROPOSED BOUNDARY MAP OF  
TEMECULA VALLEY UNIFIED SCHOOL DISTRICT  
COMMUNITY FACILITIES DISTRICT NO. 2014-1  
COUNTY OF RIVERSIDE  
STATE OF CALIFORNIA



LEGEND:

(1)

LOT NUMBER

COMMUNITY FACILITIES DISTRICT BOUNDARY

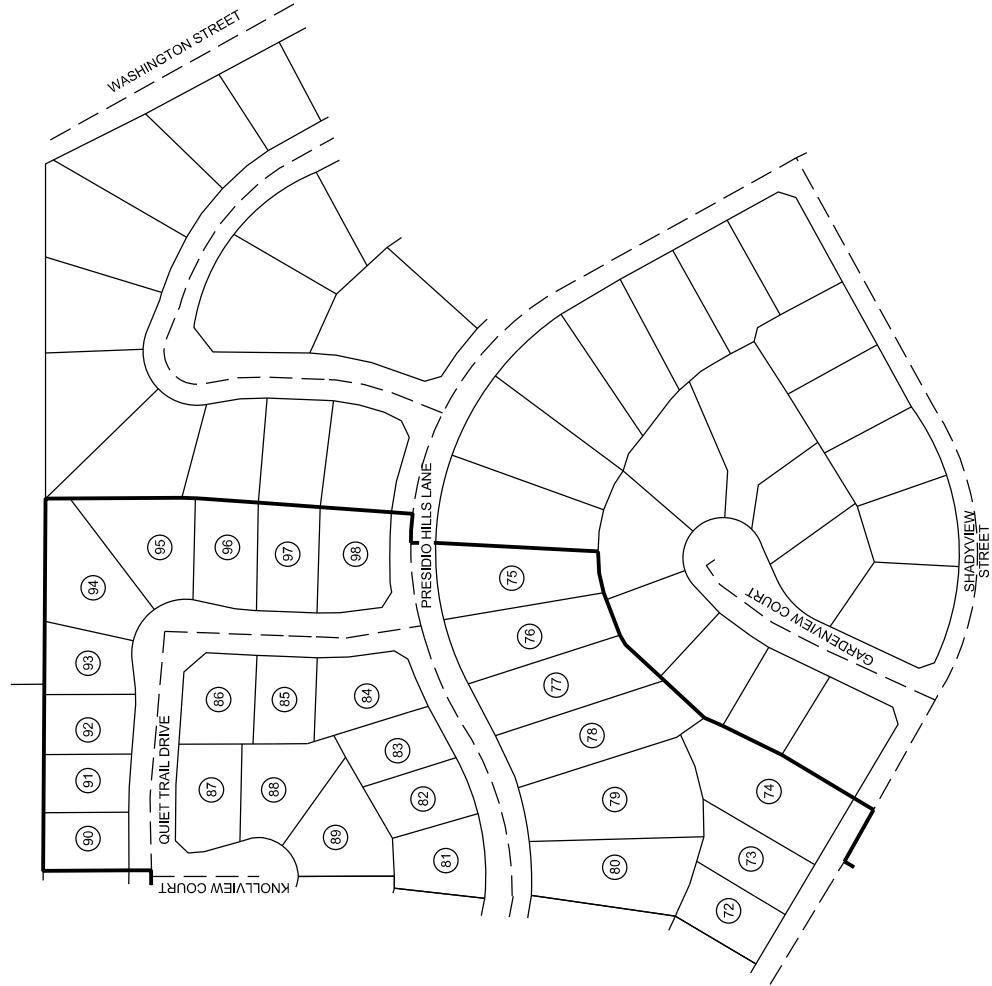
**SDFA**

SPECIAL DISTRICT FINANCING  
& ADMINISTRATION

437 WEST GRAND AVENUE  
ESCONDIDO, CALIFORNIA 92025  
TELEPHONE: (760) 933-2630  
FAX: (760) 933-2631

SHEET	3 OF 8
DATE	MARCH 2014
JOB NO.	CFD2014-0314

PROPOSED BOUNDARY MAP OF  
TEMECULA VALLEY UNIFIED SCHOOL DISTRICT  
COMMUNITY FACILITIES DISTRICT NO. 2014-1  
COUNTY OF RIVERSIDE  
STATE OF CALIFORNIA



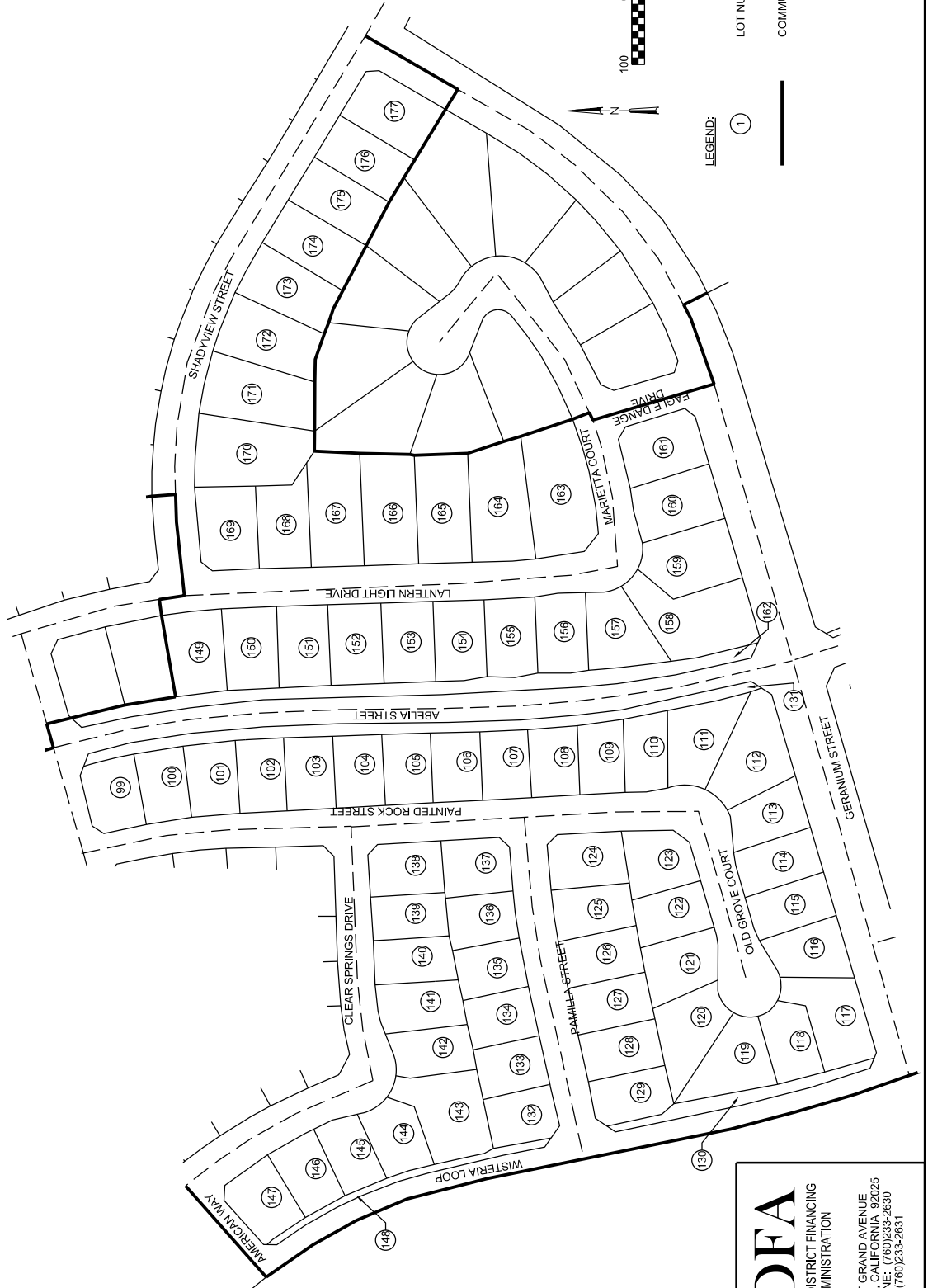
**SDFA**

SPECIAL DISTRICT FINANCING  
& ADMINISTRATION

437 WEST GRAND AVENUE  
ESCONDIDO, CALIFORNIA 92025  
TELEPHONE: (760) 934-6630  
FAX: (760) 933-4631

SHEET	4 OF 8
DATE	MARCH 2014
JOB NO.	CFD2014-0314

PROPOSED BOUNDARY MAP OF  
TEMECULA VALLEY UNIFIED SCHOOL DISTRICT  
COMMUNITY FACILITIES DISTRICT NO. 2014-1  
COUNTY OF RIVERSIDE  
STATE OF CALIFORNIA



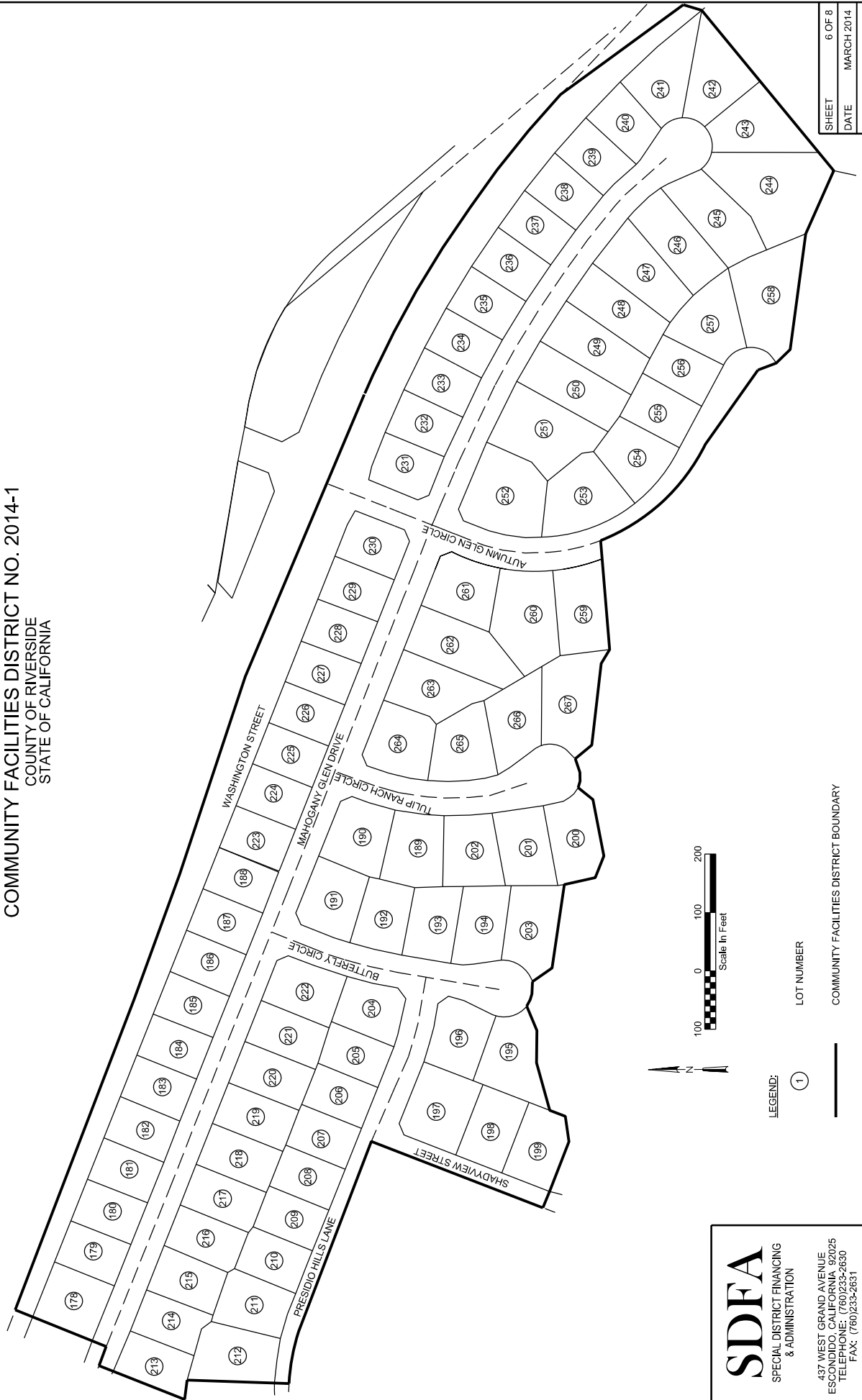
**SDFA**

SPECIAL DISTRICT FINANCING  
& ADMINISTRATION

437 WEST GRAND AVENUE  
ESCONDIDO, CALIFORNIA 92025  
TELEPHONE: (760) 933-2630  
FAX: (760) 933-2631

SHEET	5 OF 8
DATE	MARCH 2014
JOB NO.	CFD2014-0314

PROPOSED BOUNDARY MAP OF  
TEMECULA VALLEY UNIFIED SCHOOL DISTRICT  
COMMUNITY FACILITIES DISTRICT NO. 2014-1  
COUNTY OF RIVERSIDE  
STATE OF CALIFORNIA



**SDFA**

SPECIAL DISTRICT FINANCING  
& ADMINISTRATION

437 WEST GRAND AVENUE  
ESCONDIDO CALIFORNIA 92025  
TELEPHONE: (760) 943-2630  
FAX: (760) 933-2631

LEGEND:

①

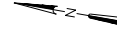
LOT NUMBER

COMMUNITY FACILITIES DISTRICT BOUNDARY

SHEET	6 OF 8
DATE	MARCH 2014
JOB NO.	CFD2014-0314



PROPOSED BOUNDARY MAP OF  
TEMECULA VALLEY UNIFIED SCHOOL DISTRICT  
COMMUNITY FACILITIES DISTRICT NO. 2014-1  
COUNTY OF RIVERSIDE  
STATE OF CALIFORNIA



LEGEND:

LOT NUMBER ①

COMMUNITY FACILITIES DISTRICT BOUNDARY

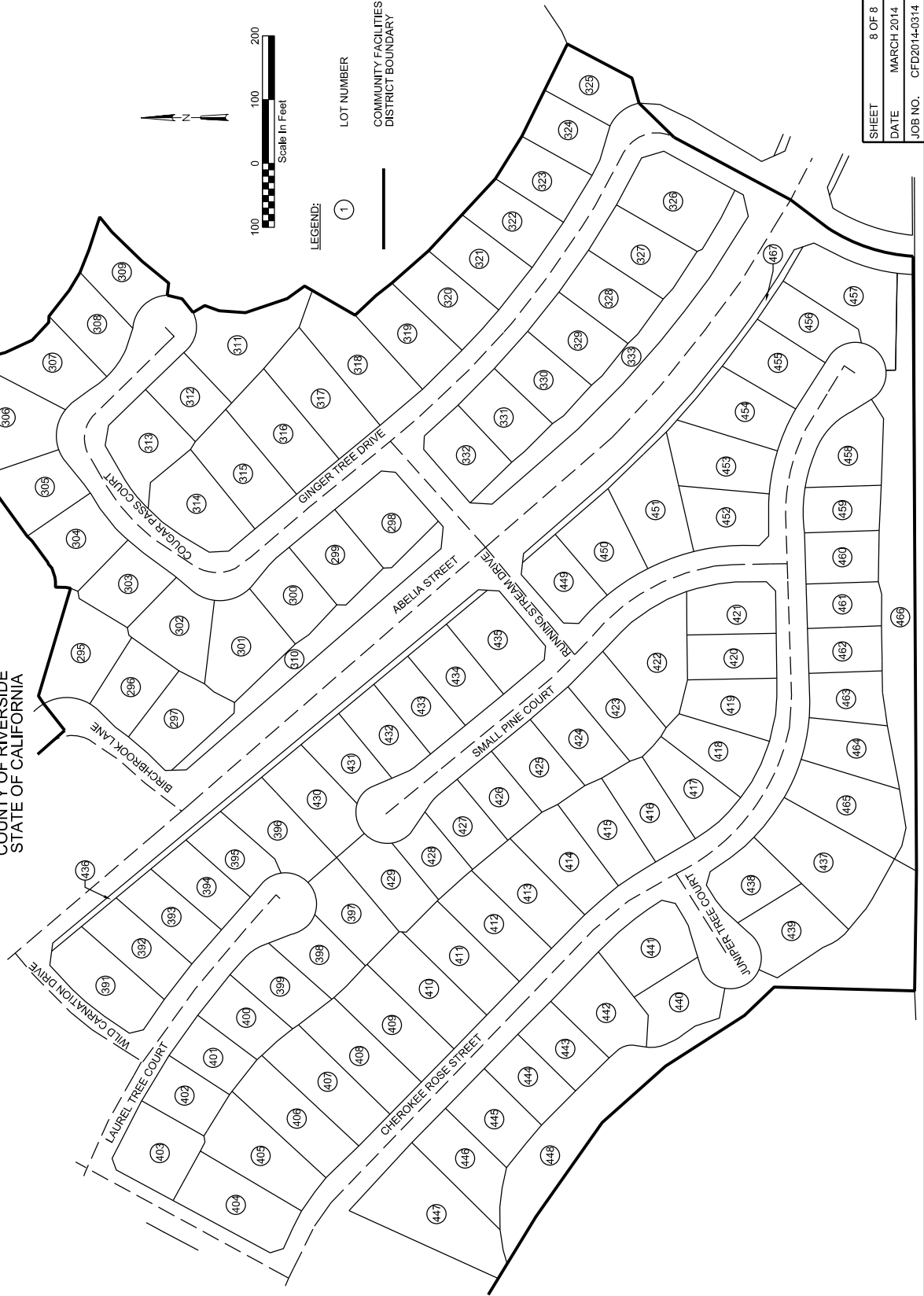
**SDFA**

SPECIAL DISTRICT FINANCING  
& ADMINISTRATION

437 WEST GRAND AVENUE  
ESCONDIDO, CALIFORNIA 92025  
TELEPHONE: (760) 933-6630  
FAX: (760) 933-6631

SHEET	7 OF 8
DATE	MARCH 2014
JOB NO.	CFD2014-0314

PROPOSED BOUNDARY MAP OF  
TEMECULA VALLEY UNIFIED SCHOOL DISTRICT  
COMMUNITY FACILITIES DISTRICT NO. 2014-1  
COUNTY OF RIVERSIDE  
STATE OF CALIFORNIA



**SDFA**  
SPECIAL DISTRICT FINANCING  
& ADMINISTRATION

437 WEST GRAND AVENUE  
ESCONDIDO, CALIFORNIA 92025  
TELEPHONE: (760) 937-6630  
FAX: (760) 933-2631

SHEET 8 OF 8  
DATE MARCH 2014  
JOB NO. CFD2014-0314

## **Appendix B: Fiscal Year 2020/21 Revenues and Expenditures**

## Appendix B

### Temecula Valley Unified School District Community Facilities District No. 2014-1 Revenues and Expenditures

	Fiscal Year 2020/21
<u>Beginning Balance (July 1st):</u>	<u>\$4,580,983.12</u>
Revenue:	
Special Taxes Collected <sup>(1)</sup>	571,831.54
Interest Earnings <sup>(2)</sup>	7,828.82
<u>        Total Revenue</u>	<u>\$579,660.36</u>
Expenditures:	
Facilities	3,707,094.61
Bonded Indebtedness	
Principal	120,000.00
Interest	358,062.50
Administration	
Cost of Collection <sup>(3)</sup>	33,619.00
Other	0.00
<u>        Total Expenditures</u>	<u>\$4,218,776.11</u>
<u>Ending Balance (June 30th)<sup>(4)</sup>:</u>	<u>\$941,867.37</u>

#### Footnotes:

- (1) Represents the total amount of special taxes received from the County of Riverside along with the payment of delinquent special taxes directly to the CFD. These payments may include interest earnings on current year special tax payments, as well as penalties and interest on delinquent prior year special taxes paid.
- (2) Includes interest earned and accrued interest paid on investments.
- (3) Cost of Collection includes: the administrative expenses of the School District, the cost of an independent financial consultant, bank fees and charges, as well as the cost of legal fees as needed or required. The Cost of Collection does not include the cost of placing the levy onto the roll of the County of Riverside as these charges are collected by the County as a reduction in the amount of special taxes received annually.
- (4) See Page 2 for balance details by account.

## Appendix B

Temecula Valley Unified School District  
**Community Facilities District No. 2014-1**  
Fiscal Year End Balances by Account<sup>(1)</sup>

	Fiscal Year 2020/21
<b>Funds and Accounts as of June 30th:</b>	
Special Tax Fund	347,167.93
Principal Account	0.00
Interest Account	4,236.74
Bond Proceeds: School Facilities Account	8.96
Administrative Expense Fund	56,884.66
Direct Funding: School Facilities Account <sup>(2)</sup>	51,497.07
Reserve Fund	482,072.01
Escrow Fund	0.00
Ending Balance (June 30th)	\$941,867.37

### Footnotes:

- (1) All funds are held by US Bank acting as Fiscal Agent for the District, except for a portion of the School Facilities Account for Direct Funding which represents special taxes received in excess of annual administration expenses prior to the issuance of debt.
- (2) Direct funding of School Facilities represents special tax funds annually deposited from the levy of special taxes in excess of debt service and required administration. Use of such funds is described in Appendix C.

## **Appendix C: School Facilities Construction and Funding Status**

## Appendix C

Temecula Valley Unified School District  
**Community Facilities District No. 2014-1**  
School Facilities Construction and Funding Status

### Projects Authorized and Funded through the Issuance of Debt

<b>Project Funding from Proceeds: Activity and Balance</b>	<u>Fiscal Year 2020/21</u>
Beginning Balance (July 1st)	2,567,063.53
Deposits (Interest, Accrued Interest, Etc.)	40.04
Expenditures	2,567,094.61
Ending Balance (June 30th)	\$8.96

#### Summary of Projects Authorized and Funded through Debt Issuance:

<u>Site</u>	<u>Description</u>	<u>Status</u>	<u>Approx. % of Total</u>
Chaparral HS	Restroom / Snack Bar	Complete	8%
District Office	Conference Room	Complete	19%
K-8 STEAM Academy	New Construction	<i>In Progress</i>	

### Projects Authorized and Funded Directly from Special Taxes

<b>Project Funding from Direct Funding: Activity and Balance</b>	<u>Fiscal Year 2020/21</u>
Beginning Balance (July 1st)	1,092,772.35
Deposits <sup>(1)</sup>	7,744.68
Expenditures	1,050,000.00
Ending Balance (June 30th)	\$50,517.03

#### Fiscal Year 2020/21 Projects Authorized and Funded through Direct Funding:

<u>Site</u>	<u>Description</u>	<u>Status</u>	<u>Approx. % of Total</u>
K-8 STEAM Academy	New Construction	<i>In Progress</i>	

#### Projected Projects Authorized and Funded through Fund Balances:

The above identified fund balances will be used to directly or indirectly benefit property within the CFD. Identified balances have not yet been dedicated but have been found to be needed to mitigate the impact of the development on school facilities. See the 2021 School Facilities Master Plan as to possible projects to be funded when adequate funding is available.

#### Footnote:

- (1) Represents the Special Taxes collected less expenditures within the fiscal year, both as described in Appendix B, including interest earnings and accrued interest paid. This total does not match the net change in total fund balance shown in Appendix B due to ending balances held in individual funds.