

**FISCAL YEAR 2020/21  
ANNUAL SB165 COMPLIANCE REPORT**

**TEMECULA VALLEY UNIFIED SCHOOL DISTRICT  
COMMUNITY FACILITIES DISTRICT NO. 2010-1**

---

December 14, 2021

**Prepared For:**  
Janet Dixon  
Director of Facilities Development  
Temecula Valley Unified School District  
31350 Rancho Vista Road  
Temecula, CA 92592

**Prepared By:**  
Special District Financing &  
Administration  
437 West Grand Avenue  
Escondido, CA 92025

# TABLE OF CONTENTS

- Section 1. PURPOSE AND OVERVIEW .....2
  - A. SUMMARY OF AUTHORIZING LEGISLATION .....2
  - B. HISTORICAL USE OF COMMUNITY FACILITY DISTRICTS AT TEMECULA VALLEY UNIFIED SCHOOL DISTRICT .....2
- Section 2. SUMMARY OF FORMATION PROCEEDINGS.....3
  - A. FORMATION PROCEEDING ACTIONS .....3
  - B. CFD LOCATION / BOUNDARIES .....3
  - C. AUTHORIZED FACILITIES .....3
- Section 3. DEBT-ISSUANCE INFORMATION .....4
- Section 4. DEVELOPMENT AND FISCAL STATUS .....5
  - A. CURRENT DEVELOPMENT STATUS .....5
  - B. FISCAL OVERVIEW .....5
- Section 5. ADMINISTRATIVE OBLIGATIONS .....6
  - A. CALIFORNIA DEBT AND INVESTMENT ADVISORY COMMISSION (“CDIAC”) REPORTING OBLIGATIONS .....6
  - B. SECONDARY MARKET REPORTING REQUIREMENTS (RULE 15C2-12) .....6
  - C. NOTICE OF SPECIAL TAX TO HOMEOWNERS .....6
- Section 6. APPENDICES .....7
- APPENDIX A.....BOUNDARY MAP
- APPENDIX B.....FISCAL YEAR 2020/21 REVENUE AND EXPENDITURES
- APPENDIX C.....SCHOOL FACILITIES CONSTRUCTION AND FUNDING STATUS

## **Section 1. PURPOSE AND OVERVIEW**

The purpose of this Report is to provide the Board with an overview of Community Facilities District No. 2010-1 (“CFD No. 2010-1”) of the Temecula Valley Unified School District (the “School District” or “District”). This analysis was performed by Special District Financing & Administration, LLC (“SDFA”) as the Special Tax Consultant and CFD Administrator to the District in conjunction with District staff.

### **A. SUMMARY OF AUTHORIZING LEGISLATION**

The Mello-Roos Community Facilities Act (“Act”) of 1982 came about as a response to the lack of adequate financing for public capital facilities and services in the post-Proposition 13 Era. State Senators Mello and Roos sponsored this Bill, which was enacted into law by the California Legislature and is now Sections 53311 through 53368.3 of the *California Government Code*. The Act, as amended, authorizes a local governmental agency, such as a school district or city, to form a Community Facilities District (“CFD”) within a defined set of boundaries for the purposes of providing public facilities and/or services. A CFD is formed for financing purposes only and is governed by the agency that formed it. Funding is provided through the levy of voter-approved special taxes. The Act also provides that multiple agencies can join together through a Joint Community Facilities Agreement (“JCFA”) to form one CFD.

### **B. HISTORICAL USE OF COMMUNITY FACILITY DISTRICTS AT TEMECULA VALLEY UNIFIED SCHOOL DISTRICT**

Since 1990, the District has utilized the Act to form Mello-Roos Community Facilities Districts to provide for the funding of school facilities both directly and through the use of debt financing. The District has entered into JCFAs with other municipalities to allow for the formation of one CFD to fund various public facilities, such as water and sewer facilities, to be owned and operated by the controlling municipal agency.

## Section 2. SUMMARY OF FORMATION PROCEEDINGS

Community Facilities District No. 2010-1 was formed in January 2011 to finance authorized school facilities.

### A. FORMATION PROCEEDING ACTIONS

The following table provides a summary of actions taken by the Board of the School District to form Community Facilities District No. 2010-1:

<b>TABLE I FORMATION SUMMARY DATA</b>	
<b>Proceedings Item</b>	<b>Date / Resolution No.</b>
Resolution of Intention to Establish	12/14/2010 / Reso No. 2010-11/16
Resolution of Formation	1/08/2011 / Reso No. 2010-11/21
Date of Special Election	01/08/2011
County Fund Number	68-6546-FC

### B. CFD LOCATION / BOUNDARIES

CFD No. 2010-1 is located south-east of Winchester Road (Highway 79), and near the intersection of Winchester Road and Skyview Road. Appendix A contains the adopted and recorded boundary map for Community Facilities District No. 2010-1.

### C. AUTHORIZED FACILITIES

At the time of formation, a Special Tax Report is prepared which identifies the permitted use of the special tax funds collected and the proceeds from the issuance of debt. Additional formation documents, as well as documents adopted at the time of the issuance of any debt, may add additional specifics. The repayment of any issued debt is made from the special taxes levied within CFD No. 2010-1.

The Special Tax Report for Community Facilities District No. 2010-1 states that the special tax revenues collected within the District will fund school facilities necessary to meet increased demands placed upon the School District as a result of development within the District. The School Facilities may include, but are not limited to, the following: New elementary, middle, and high school facilities, central administration and support facilities as well as interim facilities, as necessary, including modernization thereof, if necessary together with land and all necessary equipment with an estimated useful life of five (5) years or longer to serve the properties within the District to house grades K through 12. Costs include site purchase and preparation, design, utility connection, general site development, facility construction, incidentals and financing.

## Section 3. DEBT-ISSUANCE INFORMATION

After a CFD is formed and an acceptable amount of development occurs, the CFD may issue debt with the approval of the Board acting as the legislative body of the CFD. Many different types of debt may be issued, such as Special Tax Bonds or Certificates of Participation. The repayment of the debt is the obligation of the CFD and is not an obligation of the School District.

In April 2019, Special Tax Bonds were issued. The following table shows the 2019 Special Tax Bond issuance information for CFD No. 2010-1.

<b>TABLE II DEBT-ISSUANCE INFORMATION</b>	
<b>Proceedings Item</b>	<b>2019 Special Tax Bonds</b>
Dated Date of Bonds	04/17/2019
Final Maturity Date	09/01/2049
Bond Issue Amount	\$3,745,000.00
School Facilities Proceeds	\$3,244,840.71
Interest Rate Range	3.00% to 4.00%
Calculated Yield	3.50%
Payment Dates	March 1 & September 1
Subject to Arbitrage Calculation	Yes

Appendix C provides information on the use of the funds deposited into the school facilities account from the sale of bonds. As of July 1, 2021, \$3,660,000 of principal remains outstanding.

## **Section 4. DEVELOPMENT AND FISCAL STATUS**

### **A. CURRENT DEVELOPMENT STATUS**

CFD No. 2010-1 is fully developed. As of March 1, 2019, 167 building permits have been issued and therefore classified as Developed Property.

### **B. FISCAL OVERVIEW**

The special tax rates proposed to be levied in the coming fiscal year are presented to the Board annually and are set at an amount adequate to meet annual debt service requirements, cover administrative costs and fund school facilities directly from special taxes as authorized in the Rate and Method of Apportionment of Special Tax adopted at formation.

Appendix B provides a report of the funds collected and expended for Fiscal Year 2020/21. Appendix C contains the status of school facilities construction and funding which was authorized at the time of formation. This information is presented in compliance with SB165, the "Bond Accountability Act" which was codified in Government Code Sections 50075.1, 50075.3 and 50075.5. Appendix B also contains additional information which complies with Government Code Section 53343.1. The requirement to comply with Government Code Section 53343.1 is only applicable if requested by a person who resides in or owns property in CFD No. 2010-1. To date, this information has not been requested, but is being provided here for transparency purposes.

## **Section 5. ADMINISTRATIVE OBLIGATIONS**

This section of the Report overviews administrative obligations under which the School District has an obligation to comply.

### **A. CALIFORNIA DEBT AND INVESTMENT ADVISORY COMMISSION (“CDIAC”) REPORTING OBLIGATIONS**

California Government Code requires that a report entitled, Yearly Fiscal Status Report, be filed with the California Debt and Investment Advisory Commission (“CDIAC”) each October for debt issued after January 1, 1993, as well as posted on the School District website on or before January 31<sup>st</sup>. In addition, CDIAC also requires an Annual Debt Transparency Report to be filed each January for debt issued after January 1, 2017. The outstanding Temecula Valley Unified School District Community Facilities District No. 2010-1 2019 Special Tax Bonds issued in April 2019 are subject to both the filing of the Yearly Fiscal Status Report and the Annual Debt Transparency Report. The School District is in compliance with this requirement and such report is available on the School District’s website at <https://www.tvusd.k12.ca.us/domain/10996>.

### **B. SECONDARY MARKET REPORTING REQUIREMENTS (RULE 15C2-12)**

Secondary Market Reporting Requirements are applicable to certain debt issues dated after July 3, 1995. The Temecula Valley Unified School District Community Facilities District No. 2010-1 2019 Special Tax Bonds issued in April 2019 are subject to this requirement. The School District is in compliance with this requirement and has timely posted the required data onto the Municipal Securities Rulemaking Board website, “EMMA” (Electronic Municipal Market Access) as required.

### **C. NOTICE OF SPECIAL TAX TO HOMEOWNERS**

In accordance with Section 53340.2 of the Government Code, an agency will designate an office, department, or bureau to establish procedures to promptly respond to inquiries concerning current and future estimated tax liability. For purposes of enabling sellers of real property subject to the levy of special taxes to satisfy the notice requirements, the designated party will furnish a Notice of Special Tax to any individual requesting the notice within five (5) business days of receiving a request for such notice. The local agency may charge a reasonable fee for this service not to exceed ten dollars (\$10.00). SDFa is the direct contact to comply with all requests for this notice as well as general questions regarding CFD No. 2010-1.

---

## **Section 6. APPENDICES**

---

**Appendix A    Boundary Map**

**Appendix B    Fiscal Year 2020/21 Revenues and Expenditures**

**Appendix C    School Facilities Construction and Funding Status**



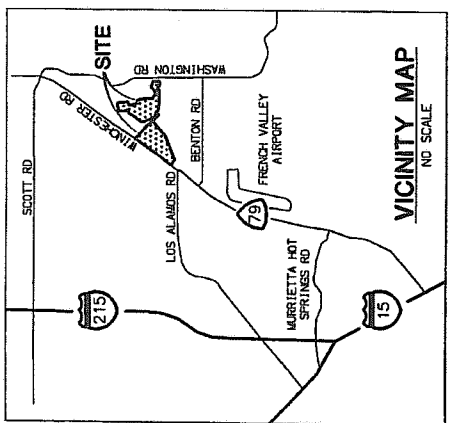
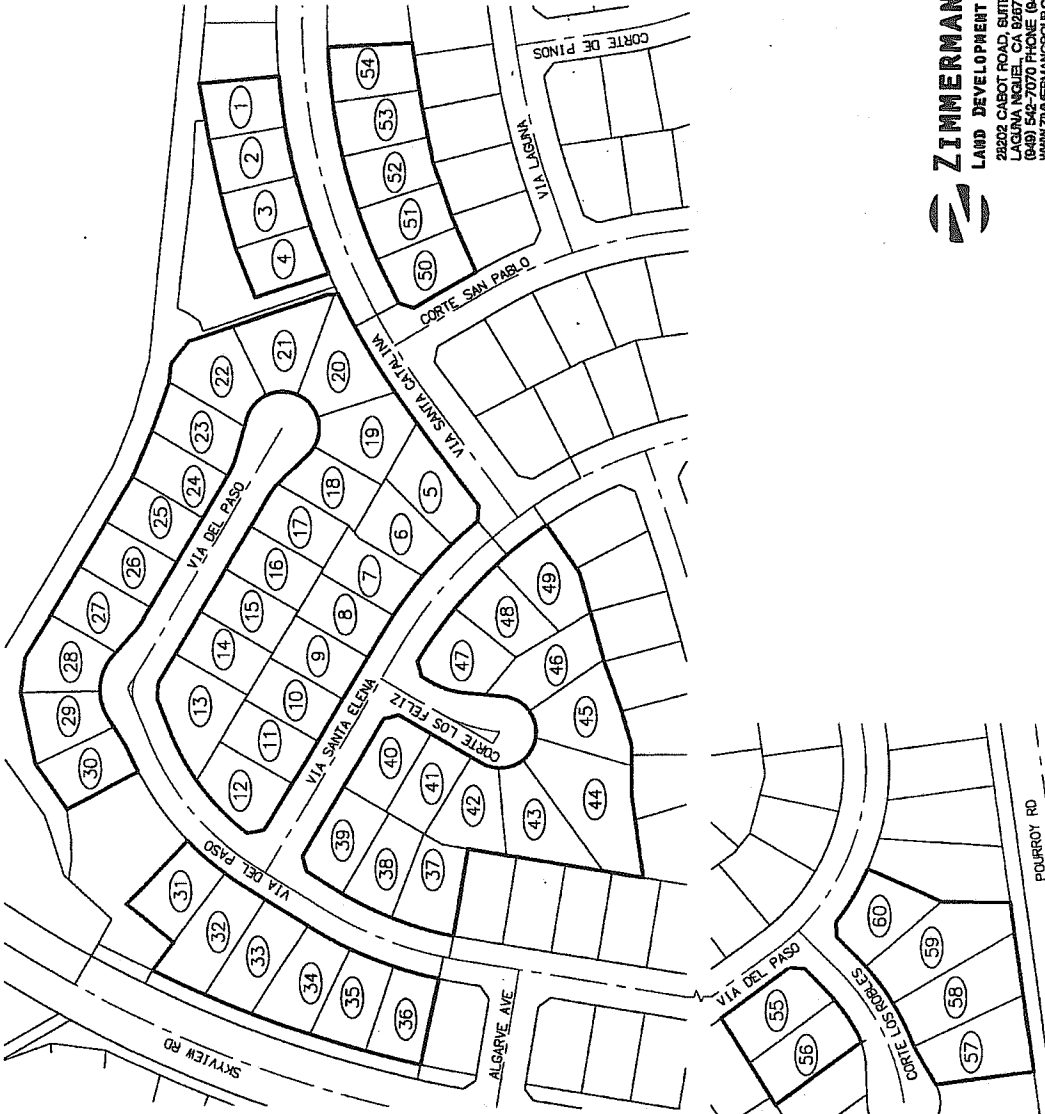
## **Appendix A: Boundary Map**



74  
101  
city

SHEET 2 OF 3  
11/29/2010

**PROPOSED BOUNDARY MAP OF  
TEMECULA VALLEY UNIFIED SCHOOL DISTRICT  
COMMUNITY FACILITIES DISTRICT NO. 2010-1**  
COUNTY OF RIVERSIDE  
STATE OF CALIFORNIA



**LEGEND**  
○ LOT DESIGNATION  
— LOT BOUNDARY



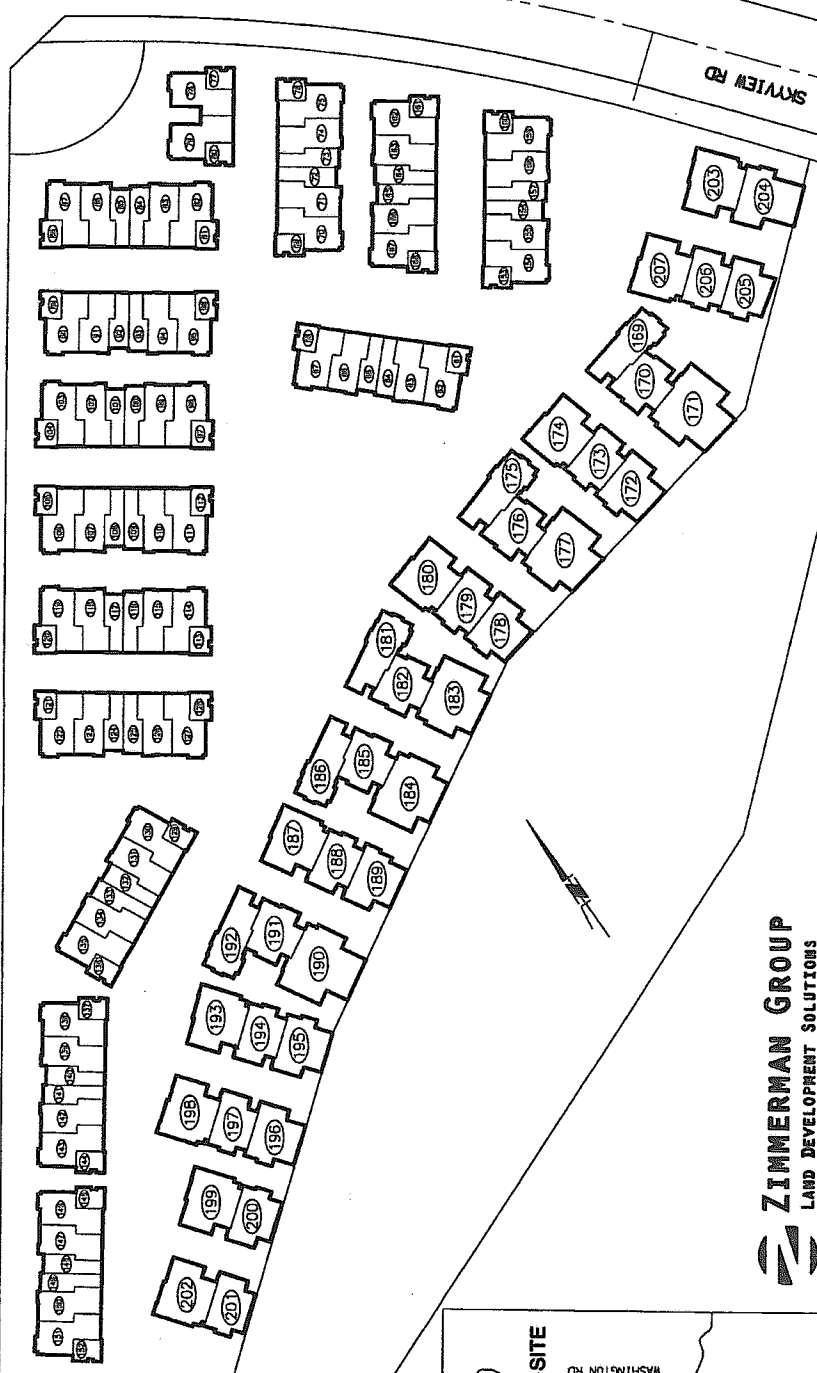
**ZIMMERMAN GROUP**  
LAND DEVELOPMENT SOLUTIONS  
28202 CABOT ROAD, SUITE 820  
LAGUNA HILLS, CA 92657  
(949) 542-7070 PHONE (949) 542-7076 FAX  
WWW.ZIMMERMANGROUP.COM

74  
102

SHEET 3 OF 3  
11/29/2010

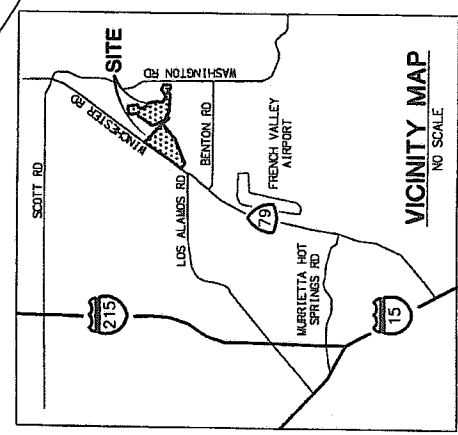
**PROPOSED BOUNDARY MAP OF  
TEMECULA VALLEY UNIFIED SCHOOL DISTRICT  
COMMUNITY FACILITIES DISTRICT NO. 2010-1**  
COUNTY OF RIVERSIDE  
STATE OF CALIFORNIA

WINCHESTER RD / STATE HWY 79



**ZIMMERMAN GROUP**  
LAND DEVELOPMENT SOLUTIONS  
28200 CASOTT ROAD, SUITE 620  
LAGUNA HILLS, CA 92653  
(949) 542-7070 PHONE (949) 542-7076 FAX  
WWW.ZIMMERMANGROUP.COM

**LEGEND**  
○ LOT DESIGNATION  
--- CTD BOUNDARY



## **Appendix B: Fiscal Year 2020/21 Revenues and Expenditures**

## Appendix B

Temecula Valley Unified School District  
**Community Facilities District No. 2010-1**  
Revenues and Expenditures

	Fiscal Year 2020/21
<b>Beginning Balance (July 1st):</b>	<b>\$4,292,370.95</b>
Revenue:	
Special Taxes Collected <sup>(1)</sup>	279,446.77
Interest Earnings <sup>(2)</sup>	3,668.52
<b>Total Revenue</b>	<b>\$283,115.29</b>
Expenditures:	
Facilities	3,847,586.73
Bonded Indebtedness	
Principal	85,000.00
Interest	127,890.51
Administration	
Cost of Collection <sup>(3)</sup>	18,216.75
Other	0.00
<b>Total Expenditures</b>	<b>\$4,078,693.99</b>
<b>Ending Balance (June 30th)<sup>(4)</sup>:</b>	<b>\$496,792.25</b>

Footnotes:

- (1) Represents the total amount of special taxes received from the County of Riverside along with the payment of delinquent special taxes directly to the CFD. These payments may include interest earnings on current year special tax payments, as well as penalties and interest on delinquent prior year special taxes paid.
- (2) Includes interest earned and accrued interest paid on investments.
- (3) Cost of Collection includes: the administrative expenses of the School District, the cost of an independent financial consultant, bank fees and charges, as well as the cost of legal fees as needed or required. The Cost of Collection does not include the cost of placing the levy onto the roll of the County of Riverside as these charges are collected by the County as a reduction in the amount of special taxes received annually.
- (4) See Page 2 for balance details by account.

## Appendix B

Temecula Valley Unified School District  
**Community Facilities District No. 2010-1**  
Fiscal Year End Balances by Account<sup>(1)</sup>

	Fiscal Year 2020/21
<b>Funds and Accounts as of June 30th:</b>	
Special Tax Fund	175,148.57
Principal Account	0.00
Interest Account	2,962.27
Bond Proceeds: School Facilities Account	0.00
Administrative Expense Fund	61,989.31
Direct Funding: School Facilities Account <sup>(2)</sup>	42,434.60
Reserve Fund	214,257.50
Escrow Fund	
<u>Ending Balance (June 30th)</u>	<u>\$496,792.25</u>

### Footnotes:

- (1) All funds are held by US Bank acting as Fiscal Agent for the District, except for a portion of the School Facilities Account for Direct Funding which represents special taxes received in excess of annual administration expenses prior to the issuance of debt.
- (2) Direct funding of School Facilities represents special tax funds annually deposited from the levy of special taxes in excess of debt service and required administration. Use of such funds is described in Appendix C.

## **Appendix C: School Facilities Construction and Funding Status**



## Appendix C

Temecula Valley Unified School District  
**Community Facilities District No. 2010-1**  
 School Facilities Construction and Funding Status

<b>Projects Authorized and Funded through the Issuance of Debt</b>
--

<b>Project Funding from Proceeds: Activity and Balance</b>	<u>Fiscal Year 2020/21</u>
Beginning Balance (July 1st)	3,311,848.16
Deposits (Interest, Accrued Interest, Etc.)	738.57
Expenditures	3,312,586.73
Ending Balance (June 30th)	\$0.00

**Summary of Projects Authorized and Funded through Debt Issuance:**

<u>Site</u>	<u>Description</u>	<u>Status</u>	<u>Approx. % of Total</u>
K-8 STEAM Academy	New Construction		<i>In Progress</i>

<b>Projects Authorized and Funded Directly from Special Taxes</b>
---

<b>Project Funding from Direct Funding: Activity and Balance</b>	<u>Fiscal Year 2020/21</u>
Beginning Balance (July 1st)	542,543.48
Deposits <sup>(1)</sup>	34,891.12
Expenditures	535,000.00
Ending Balance (June 30th)	\$42,434.60

**Fiscal Year 2020/21 Projects Authorized and Funded through Direct Funding:**

<u>Site</u>	<u>Description</u>	<u>Status</u>	<u>Approx. % of Total</u>
K-8 STEAM Academy	New Construction		<i>In Progress</i>

**Projected Projects Authorized and Funded through Fund Balances:**

The above identified fund balances will be used to directly or indirectly benefit property within the CFD. Identified balances have not yet been dedicated but have been found to be needed to mitigate the impact of the development on school facilities. See the 2021 School Facilities Master Plan as to possible projects to be funded when adequate funding is available.

**Footnote:**

- (1) Represents the Special Taxes collected less expenditures within the fiscal year, both as described in Appendix B, including interest earnings and accrued interest paid. This total does not match the net change in total fund balance shown in Appendix B due to ending balances held in individual funds.