

PROPOSED BOUNDARY MAP OF
 TEMECULA VALLEY UNIFIED SCHOOL DISTRICT
 COMMUNITY FACILITIES DISTRICT NO. 2005-1
 COUNTY OF RIVERSIDE
 STATE OF CALIFORNIA

LOT DESIGNATION

LOT NO.	ZONE	TRACT	ASSESSOR'S PARCEL NUMBER
1	3	25004	957-650-001
2	3	25004	957-650-002
3	3	25004	957-650-003
4	3	25004	957-650-004
5	3	25004	957-650-005
6	3	25004	957-650-006
7	3	25004	957-650-007
8	3	25004	957-650-008
9	3	25004	957-650-009
10	3	25004	957-650-010
11	3	25004	957-650-011
12	3	25004	957-650-012
13	3	25004	957-650-013
14	3	25004	957-650-014
15	3	25004	957-650-015
16	3	25004	957-650-016
17	3	25004	957-650-017
18	3	25004	957-650-018
19	3	25004	957-650-019
20	3	25004	957-650-020
21	3	25004	957-650-021
22	3	25004	957-650-022
23	3	25004	957-651-001
24	3	25004	957-651-002
25	3	25004	957-651-003
26	3	25004	957-651-004
27	3	25004	957-651-005
28	3	25004	957-651-006
29	3	25004	957-651-007
30	3	25004	957-651-008
31	3	25004	957-651-009
32	3	25004	957-651-010
33	3	25004	957-651-011
34	3	25004	957-651-012
35	3	25004	957-651-013
36	3	25004	957-651-014
37	3	25004	957-651-015
38	3	25004	957-651-016
39	3	25004	957-651-017
40	3	25004	957-651-018

LOT DESIGNATION

LOT NO.	ZONE	TRACT	ASSESSOR'S PARCEL NUMBER
41	3	25004	957-651-019
42	3	25004	957-651-020
43	3	25004	957-651-021
44	3	25004	957-651-022
45	3	25004	957-651-023
46	3	25004	957-651-024
47	3	25004	957-651-025
48	3	25004	957-651-026
49	3	25004	957-651-027
50	3	25004	957-651-028
51	3	25004	957-651-029
52	3	25004	957-660-001
53	3	25004	957-660-002
54	3	25004	957-660-003
55	3	25004	957-660-004
56	3	25004	957-660-005
57	3	25004	957-660-006
58	3	25004	957-660-007
59	3	25004	957-660-008
60	3	25004	957-661-001
61	3	25004	957-661-002
62	3	25004	957-661-003
63	3	25004	957-661-004
64	3	25004	957-661-005
65	3	25004	957-661-006
66	3	25004	957-661-007
67	3	25004	957-661-008
68	3	25004	957-661-009
69	3	25004	957-662-001
70	3	25004	957-662-002
71	3	25004	957-662-003
72	3	25004	957-662-004
73	3	25004	957-662-005
74	3	25004	957-662-006
75	3	25004	957-662-007
76	3	25004	957-662-008
77	3	25004	957-662-009
78	3	25004	957-662-010
79	3	25004	957-662-011
80	1	30167	958-300-046
81	1	30167	958-300-086
82	1	30167	958-321-011
83	2	31007	958-300-081

I HEREBY CERTIFY THAT THE WITHIN MAP SHOWING THE PROPOSED BOUNDARIES OF COMMUNITY FACILITIES DISTRICT NO. 2005-1, RIVERSIDE COUNTY, WAS APPROVED BY THE BOARD OF EDUCATION OF THE TEMECULA VALLEY UNIFIED SCHOOL DISTRICT ON THE _____ DAY OF _____, 2005, BY ITS RESOLUTION NO. 2005-1.

DAVID B. KILLEN
 SECRETARY OF THE BOARD OF EDUCATION
 TEMECULA VALLEY UNIFIED SCHOOL DISTRICT
 STATE OF CALIFORNIA

I HEREBY CERTIFY THAT THE WITHIN MAP SHOWING THE PROPOSED BOUNDARIES OF COMMUNITY FACILITIES DISTRICT NO. 2005-1, RIVERSIDE COUNTY, WAS APPROVED BY THE BOARD OF EDUCATION OF THE TEMECULA VALLEY UNIFIED SCHOOL DISTRICT ON THE _____ DAY OF _____, 2005, BY ITS RESOLUTION NO. 2005-1.

DAVID B. KILLEN
 SECRETARY OF THE BOARD OF EDUCATION
 TEMECULA VALLEY UNIFIED SCHOOL DISTRICT
 STATE OF CALIFORNIA

FILED THIS _____ DAY OF _____, 2005, AT THE HOUR OF _____ O'CLOCK
 P.M. IN BOOK _____ OF MAPS OF ASSESSMENT AND COMMUNITY FACILITIES DISTRICTS AND
 AS INSTRUMENT NO. _____ IN THE OFFICE OF THE COUNTY RECORDER OF RIVERSIDE
 COUNTY, STATE OF CALIFORNIA. Fee \$1100

CAROL ANN WYATT
 COUNTY RECORDER OF RIVERSIDE COUNTY

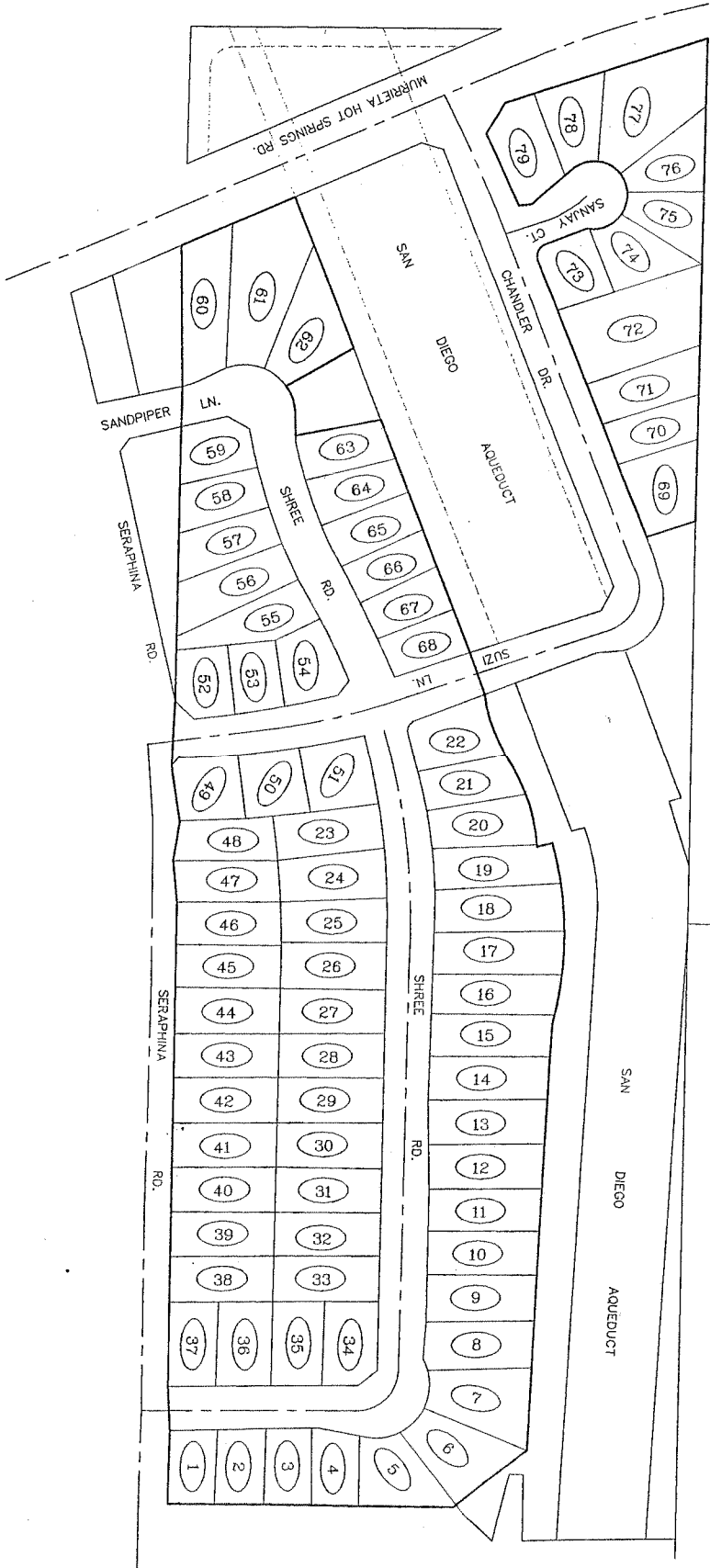
Special District Financing
 Administration
 437 W. Grand Avenue
 Escondido, California 92025
 Tel: (760) 233-2630 Fax: (760) 233-2631

(04-020) MARCH 2005)

BOOK 62 PAGES 38-40 DOC NO 2005-0319613 4-22-05

NOTE: FOR PARTICULARS OF LINES AND DIMENSIONS OF ASSESSOR'S PARCELS, REFERENCE IS MADE TO THE RIVERSIDE COUNTY ASSESSOR'S PARCEL MAPS.

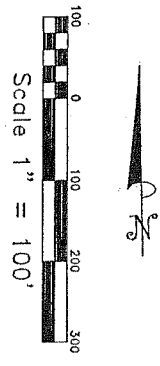
PROPOSED BOUNDARY MAP OF
 TEMECULA VALLEY UNIFIED SCHOOL DISTRICT
 COMMUNITY FACILITIES DISTRICT NO. 2005-1
 COUNTY OF RIVERSIDE
 STATE OF CALIFORNIA



Special District Financing
 & Administration
 437 W. Grand Avenue
 Escondido, California 92025
 Tel: (760) 233-2850 Fax: (760) 233-2831

(04-020 MARCH 2005)

LEGEND
 --- CFD BOUNDARY
 (1) LOT DESIGNATION



PROPOSED BOUNDARY MAP OF
 TEMECULA VALLEY UNIFIED SCHOOL DISTRICT
 COMMUNITY FACILITIES DISTRICT NO. 2005-1
 COUNTY OF RIVERSIDE
 STATE OF CALIFORNIA

city
 SHEET 3 OF 3



Special District Financing
 & Administration
 437 W. Grand Avenue
 Escondido, California 92025
 Tel: (760) 233-2630 Fax: (760) 233-2631
 (04-020) MARCH 2005

LEGEND
 --- CFD BOUNDARY
 (1) LOT DESIGNATION

