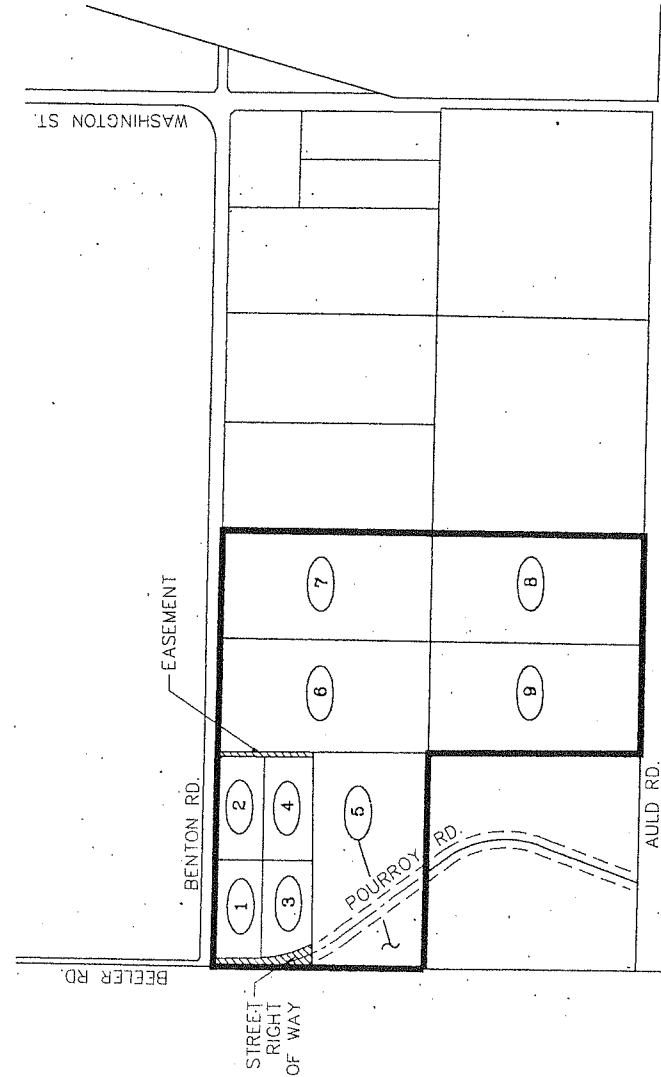


**PROPOSED BOUNDARY MAP OF
COMMUNITY FACILITIES DISTRICT NO. 2000-1**
TEMECULA VALLEY UNIFIED SCHOOL DISTRICT
COUNTY OF RIVERSIDE
STATE OF CALIFORNIA



LOT DESIGNATION

MAP REF. NO.	RIVERSIDE COUNTY ASSESSOR'S PARCEL NO.
1	958-040-002
2	958-040-003
3	958-040-004
4	958-040-005
5	958-040-006
6	958-040-007
7	958-040-008
8	958-040-017
9	958-040-018

FILED IN THE OFFICE OF THE SECRETARY OF THE BOARD OF EDUCATION THIS 16 DAY OF August, 2000.

David S. Allen
DAVID S. ALLEN
SECRETARY OF THE BOARD OF EDUCATION
TEMECULA VALLEY UNIFIED SCHOOL DISTRICT
STATE OF CALIFORNIA

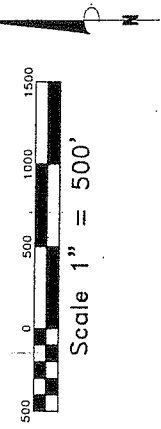
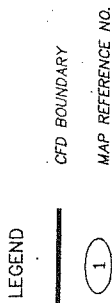
I HEREBY CERTIFY THAT THE WITHIN MAP SHOWING PROPOSED BOUNDARIES OF COMMUNITY FACILITIES DISTRICT NO. 2000-1, TEMECULA VALLEY UNIFIED SCHOOL DISTRICT, COUNTY OF RIVERSIDE, STATE OF CALIFORNIA, WAS APPROVED BY THE BOARD OF EDUCATION AT A REGULAR MEETING HEREOF, HELD ON THE 23 DAY OF August, 2000, BY ITS RESOLUTION NO. 2000-24.

David S. Allen
DAVID S. ALLEN
SECRETARY OF THE BOARD OF EDUCATION
TEMECULA VALLEY UNIFIED SCHOOL DISTRICT
STATE OF CALIFORNIA

FILED THIS 17th DAY OF August, 2000, AT THE HOUR OF 8:00 O'CLOCK
A.M. IN BOOK 24 AND PAGE 67 OF MAPS OF ASSESSMENT AND COMMUNITY
FACILITIES DISTRICTS IN THE OFFICE OF THE COUNTY RECORDER IN THE COUNTY OF RIVERSIDE, STATE
OF CALIFORNIA. FEE: \$ 6.00 No. 2000-322329

Casey L. Orso
CASEY L. ORSO, Deputy
COUNTY RECORDER
COUNTY OF RIVERSIDE
STATE OF CALIFORNIA

NOTE: FOR PARTICULARS OF LINES AND DIMENSIONS OF ASSESSOR'S PARCELS, REFERENCE IS MADE TO THE RIVERSIDE COUNTY ASSESSOR PARCEL MAPS.



Special District Financing
& Administration, LLC
333 South Juniper Street, Suite 208
Escondido, California 92025
Tel: (760) 233-2630 Fax: (760) 233-2631