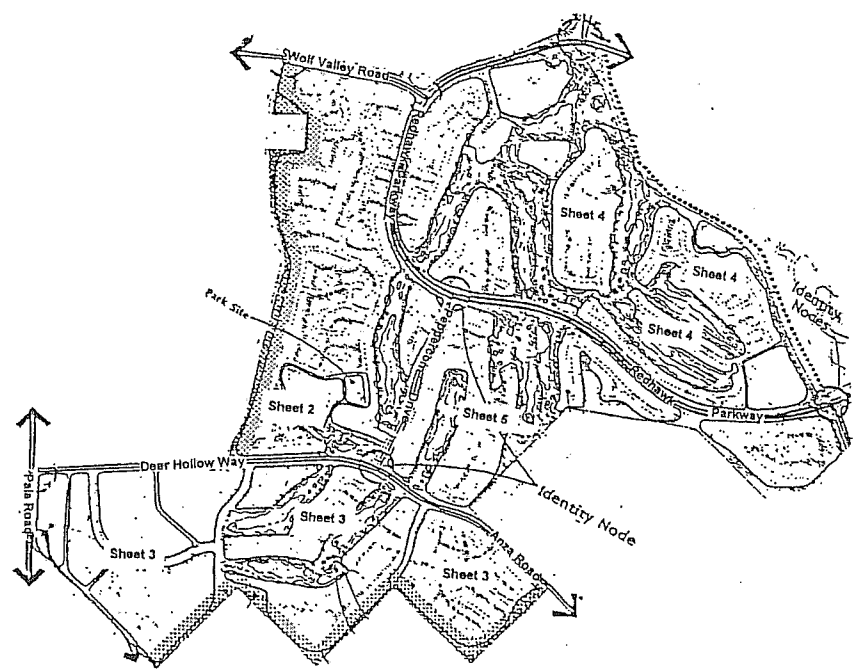


PROPOSED BOUNDARIES OF  
 COMMUNITY FACILITIES DISTRICT NO. 2002-2  
 OF THE TEMECULA VALLEY UNIFIED SCHOOL DISTRICT  
 RIVERSIDE COUNTY  
 STATE OF CALIFORNIA



REFERENCE MAP

NOT TO SCALE

FILED IN THE OFFICE OF THE SECRETARY OF THE BOARD OF EDUCATION OF THE TEMECULA VALLEY UNIFIED SCHOOL DISTRICT THIS 23<sup>RD</sup> DAY OF JULY, 2002.

*David B. Allmen*  
 DAVID B. ALLMEN  
 SECRETARY OF THE BOARD OF EDUCATION  
 TEMECULA VALLEY UNIFIED SCHOOL DISTRICT  
 STATE OF CALIFORNIA

I HEREBY CERTIFY THAT THE WITHIN MAP SHOWING THE PROPOSED BOUNDARIES OF COMMUNITY FACILITIES DISTRICT NO. 2002-2, RIVERSIDE COUNTY, STATE OF CALIFORNIA, WAS APPROVED BY THE BOARD OF EDUCATION OF THE TEMECULA VALLEY UNIFIED SCHOOL DISTRICT AT A REGULAR MEETING THEREOF, HELD ON THIS 6<sup>TH</sup> DAY OF AUGUST, 2002, BY ITS RESOLUTION NO. 2002-03/05.

*David B. Allmen*  
 DAVID B. ALLMEN  
 SECRETARY OF THE BOARD OF EDUCATION  
 TEMECULA VALLEY UNIFIED SCHOOL DISTRICT  
 STATE OF CALIFORNIA

FILED THIS 21<sup>ST</sup> DAY OF AUG, 2002, AT THE HOUR OF 8:00 O'CLOCK A.M., IN BOOK 52 OF MAPS OF ASSESSMENT AND COMMUNITY FACILITIES DISTRICTS AT PAGES 4-B AND AS INSTRUMENT NO. 2002-463880, IN THE OFFICE OF THE COUNTY RECORDER OF RIVERSIDE COUNTY, STATE OF CALIFORNIA. Fee: \$ 0

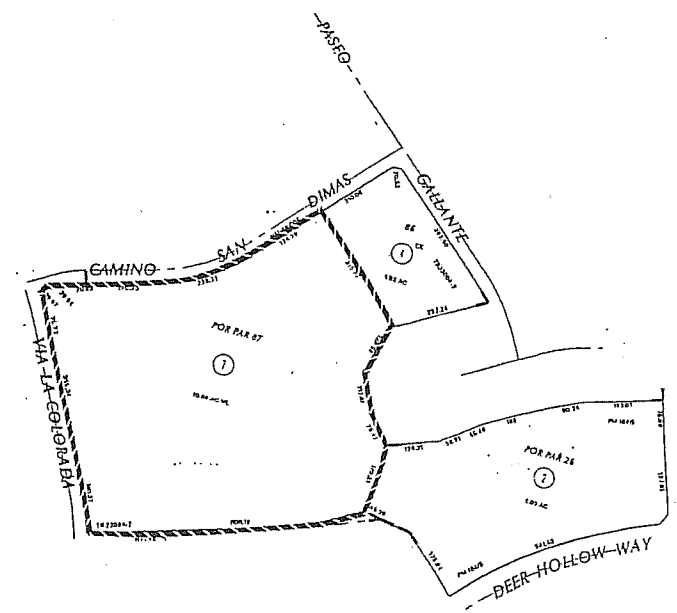
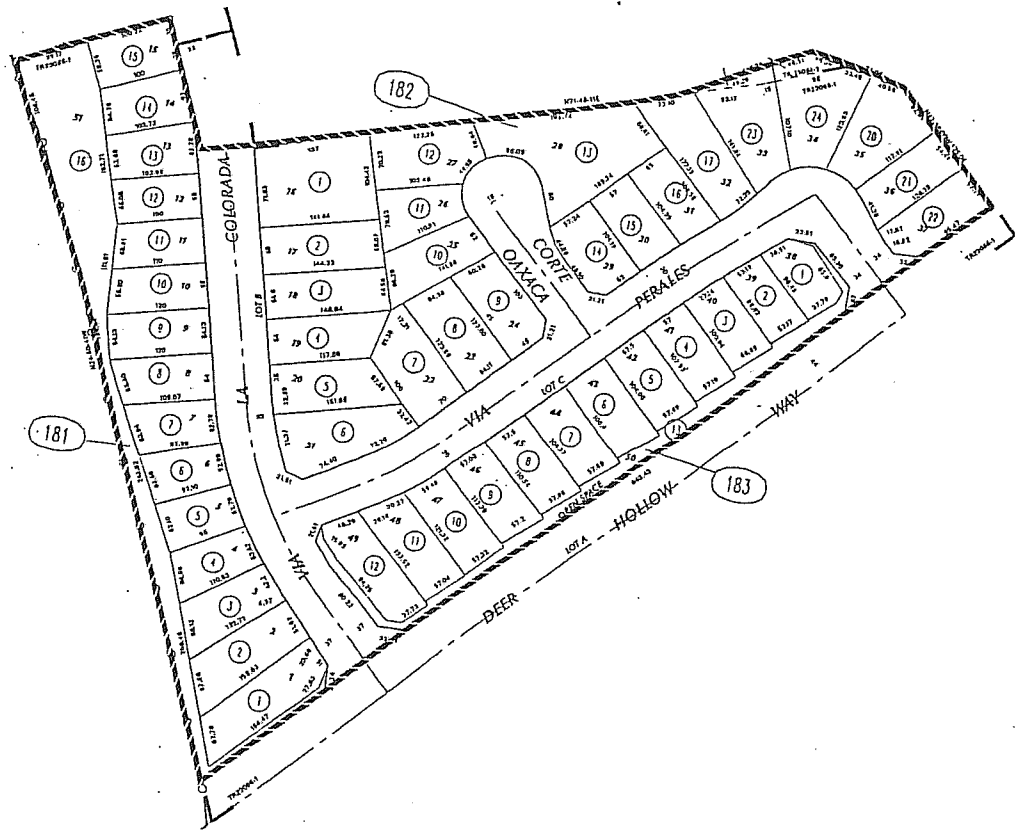
GARY L. ORSO  
 COUNTY RECORDER OF RIVERSIDE COUNTY

*Donald Lee Talbot*  
 DEPUTY

NOTE: FOR PARTICULARS OF LINES AND DIMENSIONS OF ASSESSOR'S PARCELS, REFERENCE IS MADE TO THE RIVERSIDE COUNTY ASSESSOR PARCEL MAPS.

COPY 5/4

PROPOSED BOUNDARIES OF  
COMMUNITY FACILITIES DISTRICT NO. 2002-2  
OF THE TEMECULA VALLEY UNIFIED SCHOOL DISTRICT  
RIVERSIDE COUNTY  
STATE OF CALIFORNIA



LEGEND

CFD BOUNDARY

ASSESSOR PARCEL NUMBERS: 962-181-XXX, 962-182-XXX and 962-183-XXX

LEGEND

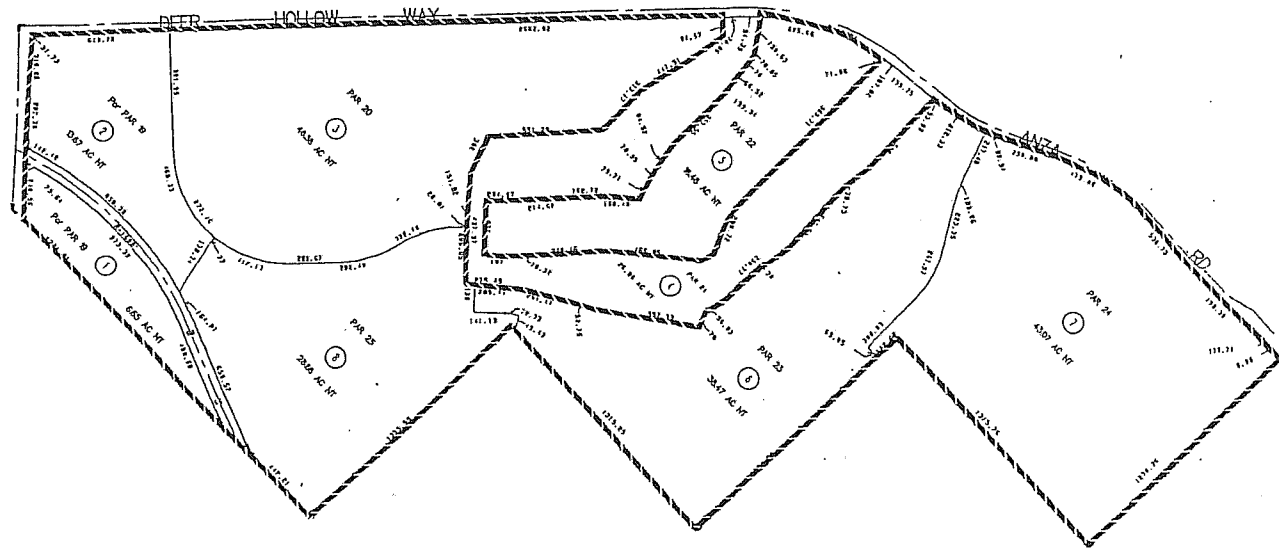
CFD BOUNDARY

ASSESSOR PARCEL NUMBERS: 962-190-XXX



NOT TO SCALE

PROPOSED BOUNDARIES OF  
 COMMUNITY FACILITIES DISTRICT NO. 2002-2  
 OF THE TEMECULA VALLEY UNIFIED SCHOOL DISTRICT  
 RIVERSIDE COUNTY  
 STATE OF CALIFORNIA

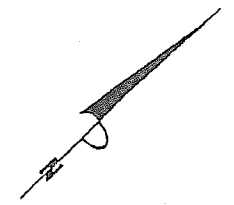


LEGEND

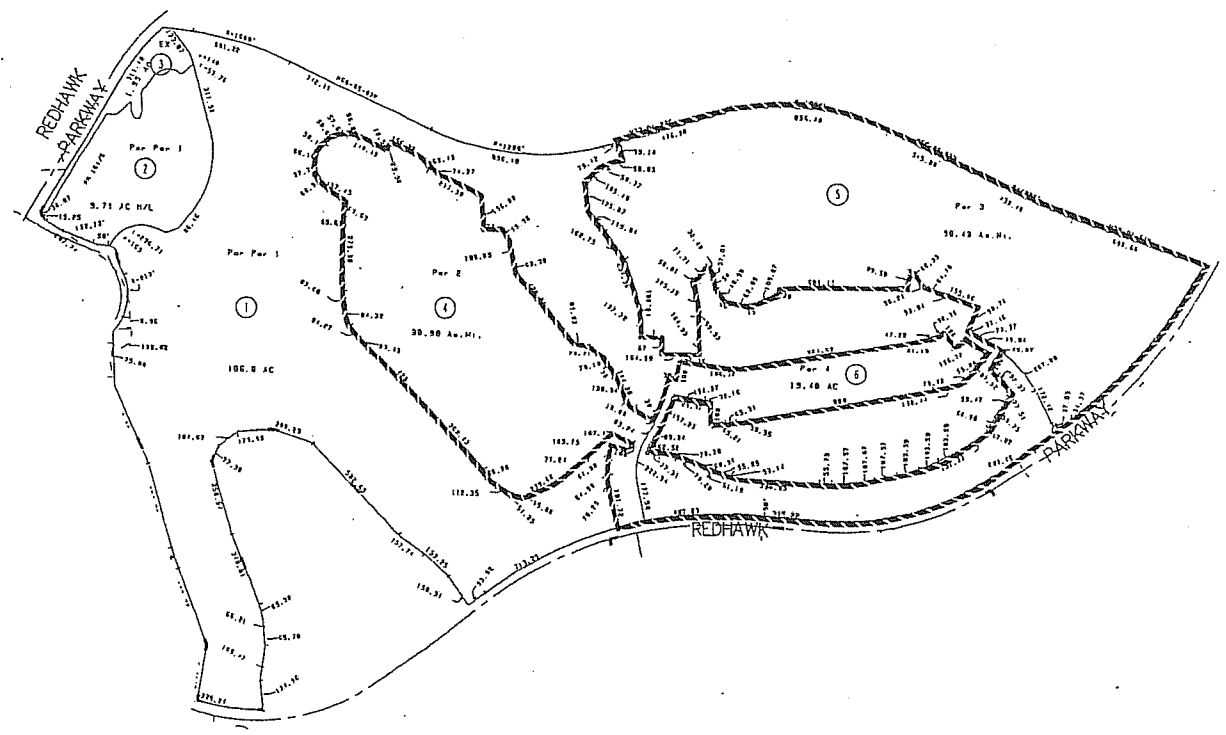
CFD BOUNDARY 

ASSESSOR PARCEL NUMBERS: 962-020-XXX

NOT TO SCALE



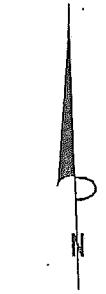
PROPOSED BOUNDARIES OF  
COMMUNITY FACILITIES DISTRICT NO. 2002-2  
OF THE TEMECULA VALLEY UNIFIED SCHOOL DISTRICT  
RIVERSIDE COUNTY  
STATE OF CALIFORNIA



LEGEND

CFD BOUNDARY 

ASSESSOR PARCEL NUMBERS: 962-040-XXX

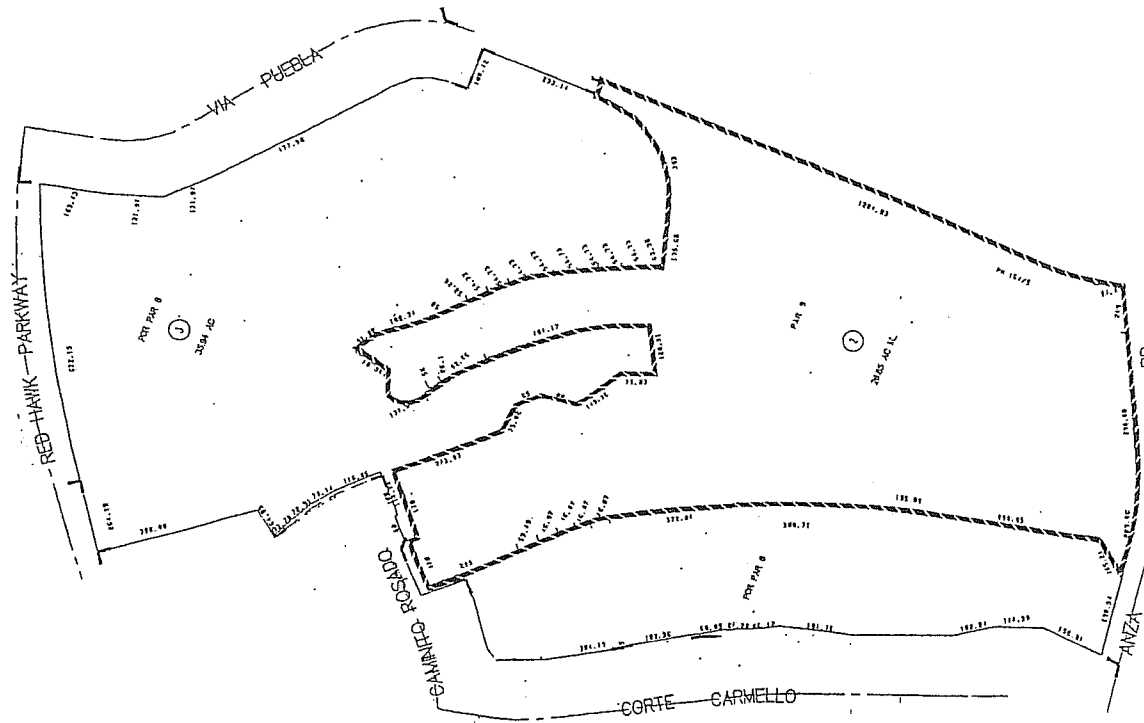


NOT TO SCALE

COPY 53

PROPOSED BOUNDARIES OF  
COMMUNITY FACILITIES DISTRICT NO. 2002-2  
OF THE TEMECULA VALLEY UNIFIED SCHOOL DISTRICT  
RIVERSIDE COUNTY  
STATE OF CALIFORNIA

SHEET 5 OF 5



LEGEND

CFD BOUNDARY 

ASSESSOR PARCEL NUMBERS: 962-030-XXX



NOT TO SCALE