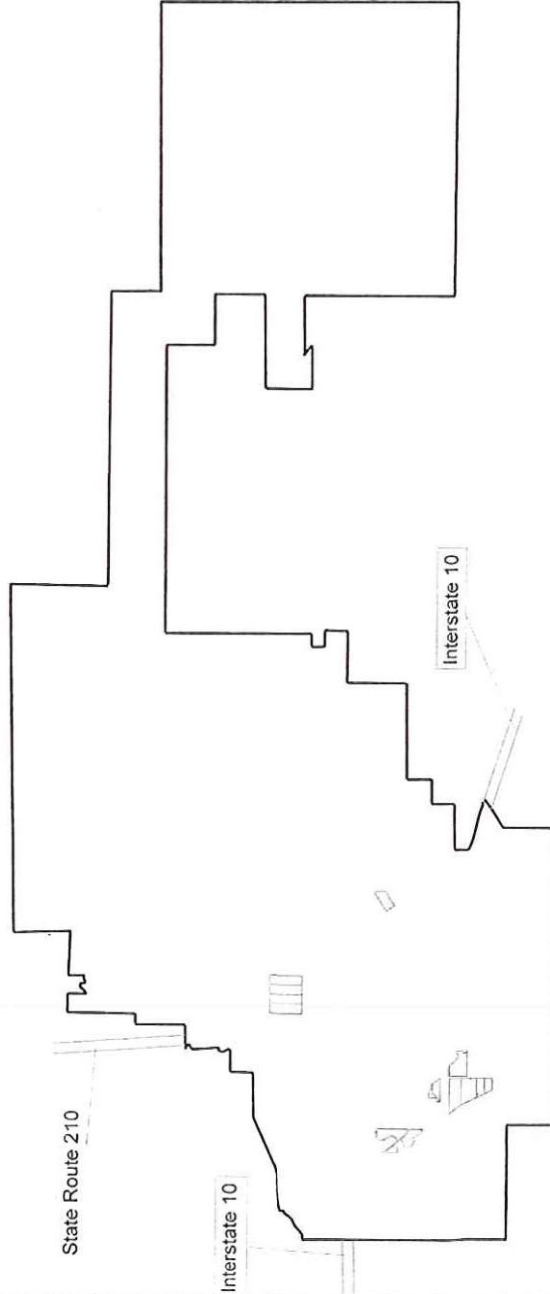
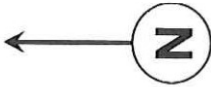




CONFIRMED COPY

PROPOSED BOUNDARIES OF  
REDLANDS UNIFIED SCHOOL DISTRICT  
COMMUNITY FACILITIES DISTRICT NO. 2021-1  
SAN BERNARDINO COUNTY  
STATE OF CALIFORNIA

SHEET 1 OF 6



LEGEND

-  Boundaries of Community Facilities District (Sheets 2-5)
-  Boundaries of Redlands Unified School District (Annexation Territory)

Prepared by:  
KeyAnalytics

(1) Filed in the office of the Clerk of the Board of Education of the Redlands Unified School District this 11<sup>th</sup> day of May, 2021

Michelle Y. Rendler

Clerk of the Board of Education  
Redlands Unified School District

(2) I hereby certify that the within map showing the proposed boundaries of Redlands Unified School District Community Facilities District No. 2021-1, San Bernardino County, State of California, was approved by the Board of Education of the Redlands Unified School District at the regular meeting thereof, held on the 11<sup>th</sup> day of May, 2021 by its Resolution No. 31, 2020-21.

Michelle Y. Rendler

Clerk of the Board of Education  
Redlands Unified School District

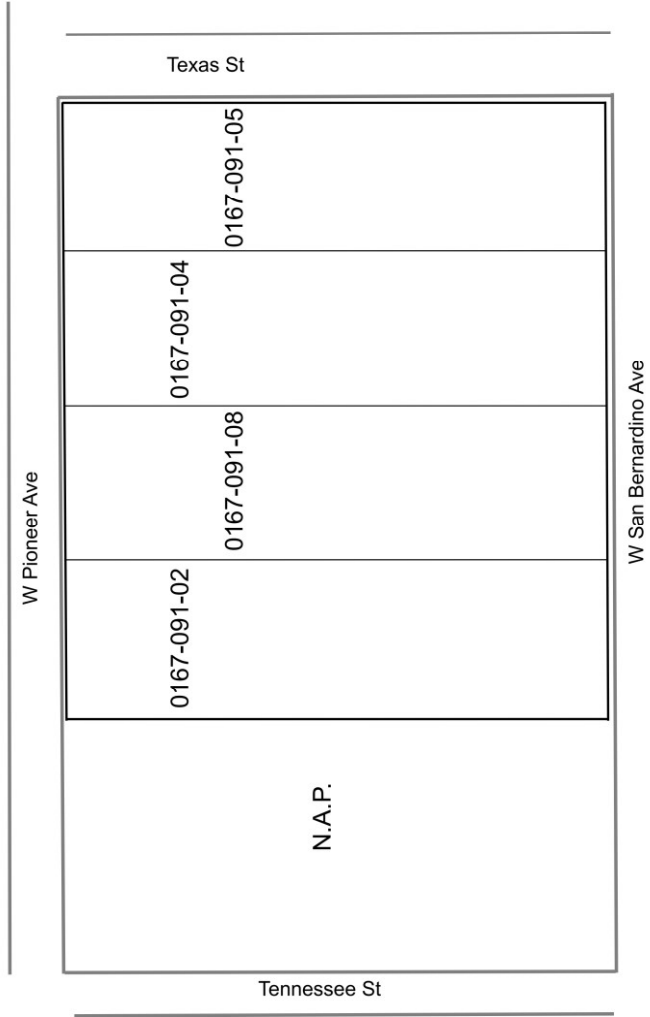
(3) THIS MAP HAS BEEN FILED UNDER DOCUMENT NUMBER 2021-0222371, THIS 13 DAY OF MAY, 2021, AT 11:05 A.M. IN BOOK 591 OF ASSESSMENT MAPS AT PAGE(S) 8-13 AT THE REQUEST OF Redlands Unified School District, IN THE AMOUNT OF \$ 19.00

BOB DUTTON  
ASSESSOR — RECORDER  
COUNTY OF SAN BERNARDINO

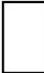

BY: Erin Garcia  
DEPUTY RECORDER

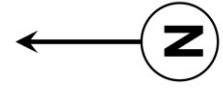
Reference is hereby made to the Assessor maps of the County of San Bernardino for an exact description of the lines and dimensions of each lot and parcel.

PROPOSED BOUNDARIES OF  
REDLANDS UNIFIED SCHOOL DISTRICT  
COMMUNITY FACILITIES DISTRICT NO. 2021-1  
SAN BERNARDINO COUNTY  
STATE OF CALIFORNIA



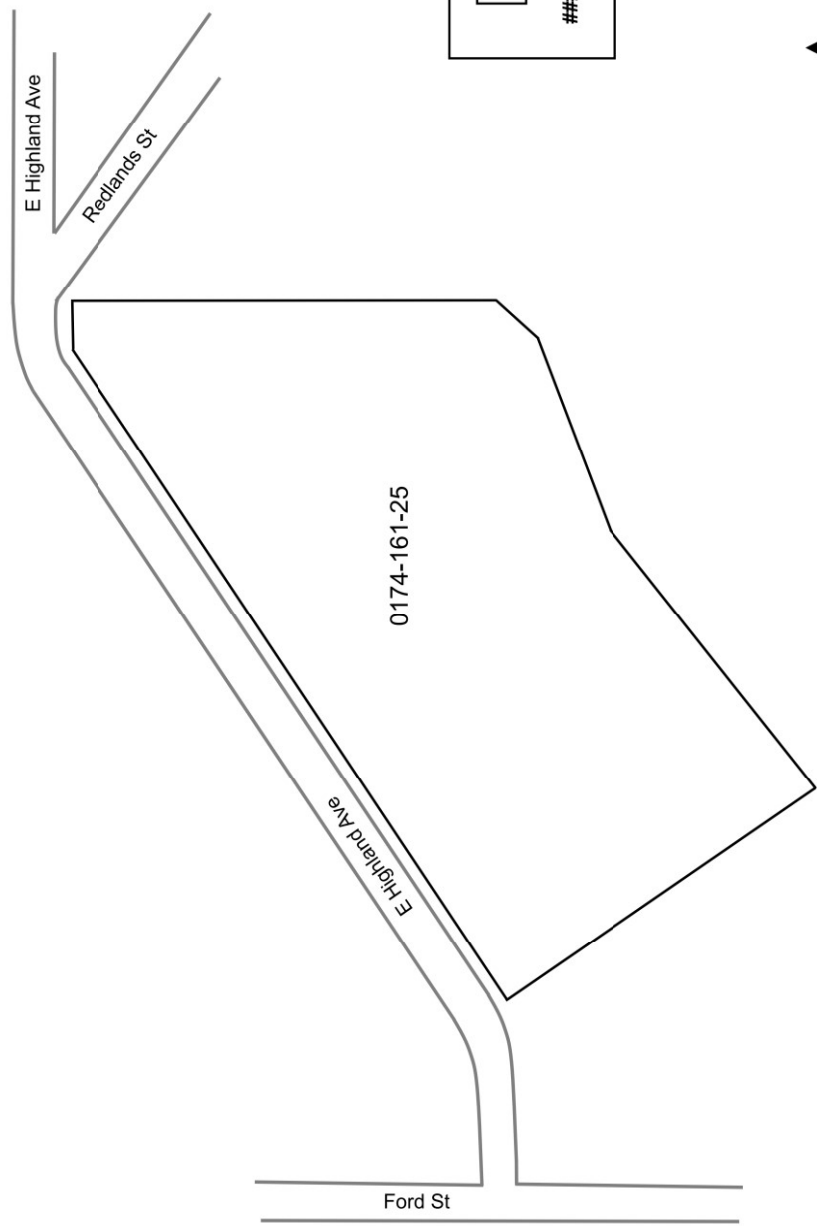
**LEGEND**

	Boundaries of Community Facilities District
	Boundaries of Assessor's Parcels
###-###-##	Assessor's Parcel Number



Reference is hereby made to the Assessor maps of the County of San Bernardino for an exact description of the lines and dimensions of each lot and parcel.

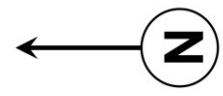
PROPOSED BOUNDARIES OF  
REDLANDS UNIFIED SCHOOL DISTRICT  
COMMUNITY FACILITIES DISTRICT NO. 2021-1  
SAN BERNARDINO COUNTY  
STATE OF CALIFORNIA



LEGEND

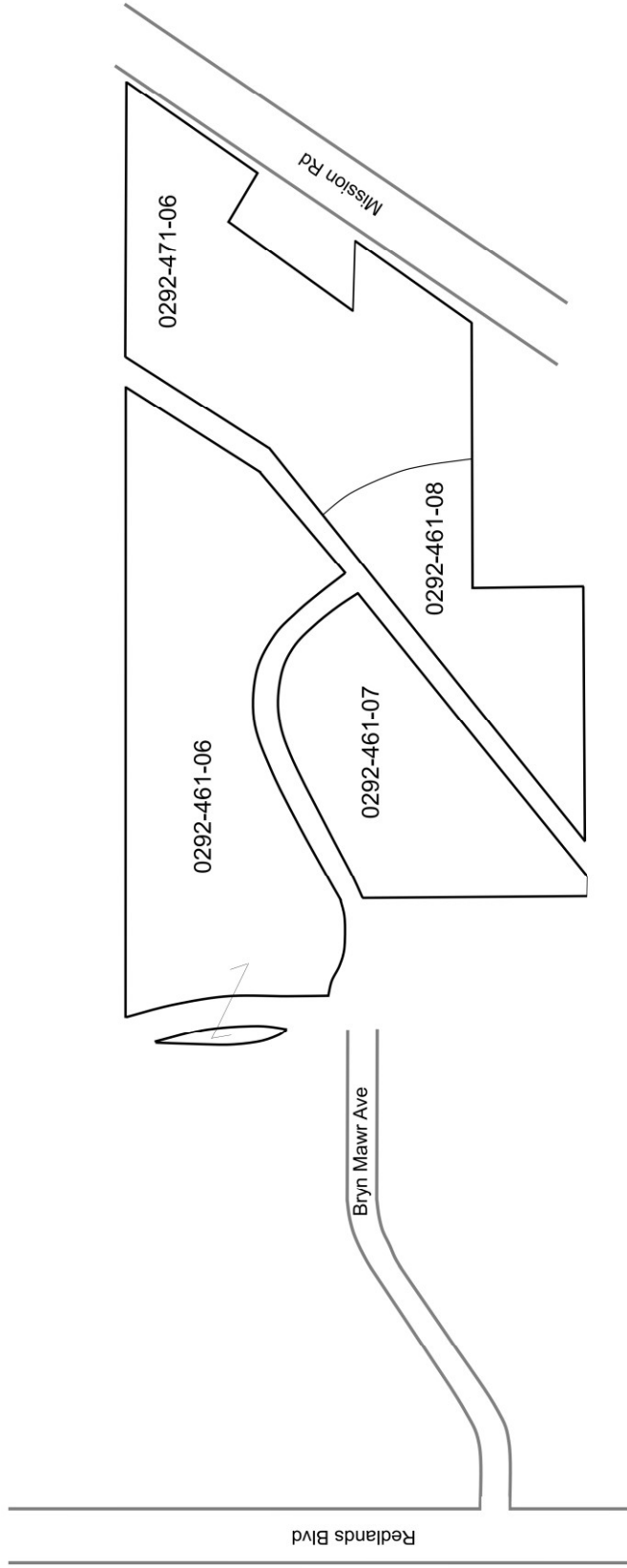
Boundaries of Community Facilities District

###-###-## Assessor's Parcel Number





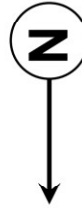
Reference is hereby made to the Assessor maps of the County of San Bernardino for an exact description of the lines and dimensions of each lot and parcel.

PROPOSED BOUNDARIES OF  
REDLANDS UNIFIED SCHOOL DISTRICT  
COMMUNITY FACILITIES DISTRICT NO. 2021-1  
SAN BERNARDINO COUNTY  
STATE OF CALIFORNIA



LEGEND

	Boundaries of Community Facilities District
	Boundaries of Assessor's Parcels
####-###-##	Assessor's Parcel Number

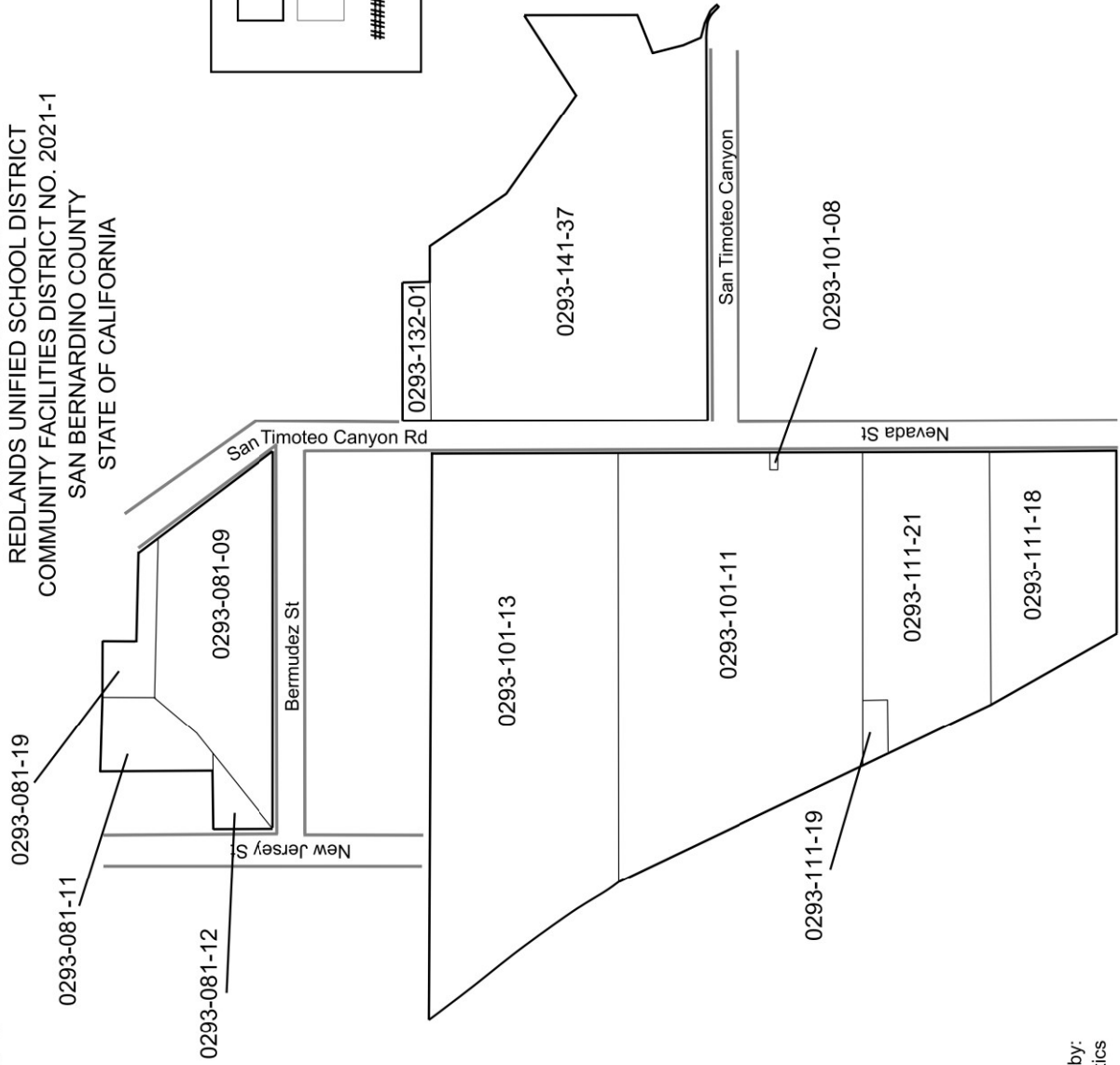


Reference is hereby made to the Assessor maps of the County of San Bernardino for an exact description of the lines and dimensions of each lot and parcel.

PROPOSED BOUNDARIES OF  
REDLANDS UNIFIED SCHOOL DISTRICT  
COMMUNITY FACILITIES DISTRICT NO. 2021-1  
SAN BERNARDINO COUNTY  
STATE OF CALIFORNIA

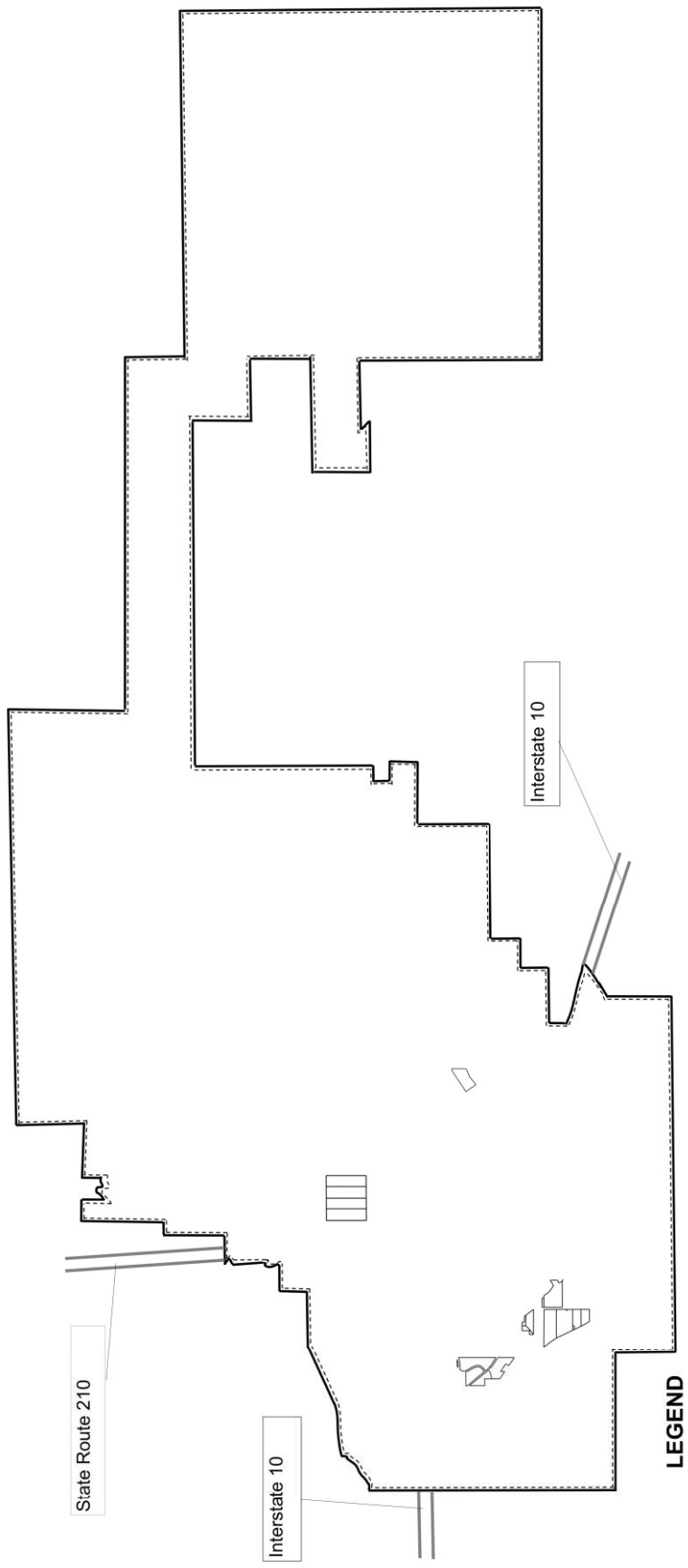
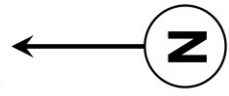
LEGEND

Boundaries of Community Facilities District  
Boundaries of Assessor's Parcels  
####-###-## Assessor's Parcel Number



Reference is hereby made to the Assessor maps of the County of San Bernardino for an exact description of the lines and dimensions of each lot and parcel.

PROPOSED BOUNDARIES OF  
REDLANDS UNIFIED SCHOOL DISTRICT  
COMMUNITY FACILITIES DISTRICT NO. 2021-1  
SAN BERNARDINO COUNTY  
STATE OF CALIFORNIA



**LEGEND**

- Boundaries of Community Facilities District
- Boundaries of Annexation Territory
- Boundaries of Redlands Unified School District

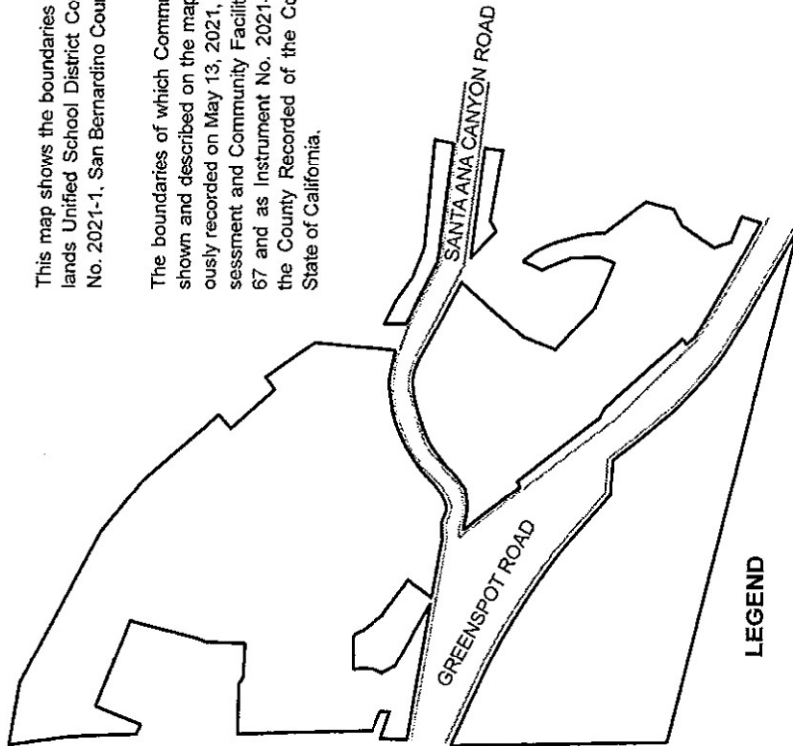
Reference is hereby made to the Assessor maps of the County of San Bernardino for an exact description of the lines and dimensions of each lot and parcel.

Prepared by:  
KeyAnalytics

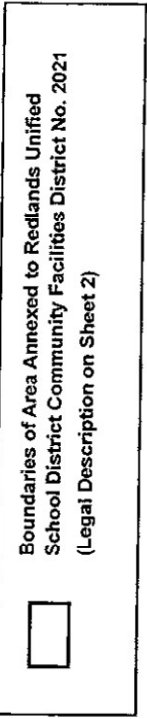
Confirmed Copy

SHEET 1 OF 2

ANNEXATION MAP NO. 1 TO  
REDLANDS UNIFIED SCHOOL DISTRICT  
COMMUNITY FACILITIES DISTRICT NO. 2021-1  
SAN BERNARDINO COUNTY  
STATE OF CALIFORNIA



**LEGEND**



Prepared by:  
KeyAnalytics

(1) Filed in the office of the Clerk of the Board of Education of the Redlands Unified School District this 9<sup>th</sup> day of November, 2021.

Michelle W. Lindley  
Clerk of the Board of Education  
Redlands Unified School District

(2) I hereby certify that the within map showing the boundaries of the area annexed to Redlands Unified School District Community Facilities District No. 2021-1, San Bernardino County, State of California, was approved by the Board of Education of the Redlands Unified School District at the regular meeting thereof, held on this 9<sup>th</sup> day of November, 2021 by its Resolution No. 22, 2021-2022.

Michelle W. Lindley  
Clerk of the Board of Education  
Redlands Unified School District

San Bernardino County Recorder's Certificate  
(3) THIS MAP HAS BEEN FILED UNDER DOCUMENT NUMBER 2021-0520642, THIS 17<sup>th</sup> DAY OF Nov, 2021, AT 2:51 P. M. IN BOOK 89 OF Boundary Maps AT PAGE(S) 72-73, AT THE REQUEST OF Redlands Unified School District, IN THE AMOUNT OF \$ 19.00.

BOB DUTTON  
ASSESSOR - RECORDER  
COUNTY OF SAN BERNARDINO COUNTY

BY: Bob Dutton Deputy Recorder

Reference is hereby made to the Assessor maps of the County of San Bernardino for an exact description of the lines and dimensions of each lot and parcel.

ANNEXATION MAP NO. 1 TO  
REDLANDS UNIFIED SCHOOL DISTRICT  
COMMUNITY FACILITIES DISTRICT NO. 2021-1  
SAN BERNARDINO COUNTY  
STATE OF CALIFORNIA

LEGAL DESCRIPTION OF ANNEXATION MAP NO. 1 OF COMMUNITY FACILITIES DISTRICT NO. 2021-1

That portion of San Bernardino County Assessor Parcel Numbers 0297-021-32, 0297-021-36, 0297-021-40 and 0297-021-41 described as Lots 1 through 26, inclusive, 29 through 33, inclusive, 44 through 73, inclusive, 78 through 88, inclusive, 671 through 680, inclusive and Lettered Lots A, D and G of Tract Map No. 18993-1, recorded on August 31, 2021, in Book 360 of Tract Maps at Pages 56 through 65, inclusive, in the Office of the San Bernardino County Recorder (recorded as Document No. 2021-0393892) and Lots 89 through 114, inclusive, 130 through 136, inclusive, and Lettered Lots B, H, K and L of Tract Map No. 18993-2, recorded on August 31, 2021, in Book 360 of Tract Maps at Pages 66 through 73, inclusive, in the Office of the San Bernardino County Recorder (recorded as Document No. 2021-0393893).

Reference is hereby made to the Assessor maps of the County of San Bernardino for an exact description of the lines and dimensions of each lot and parcel.

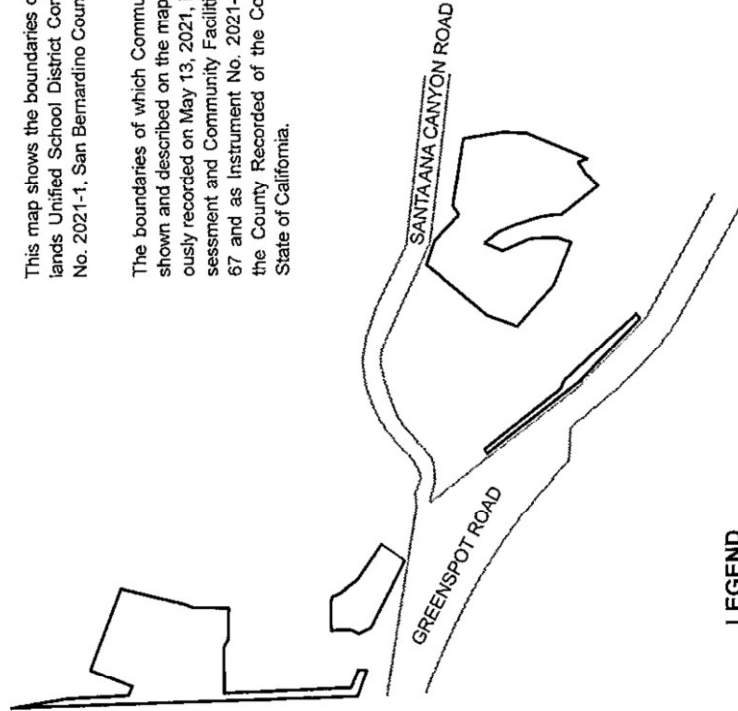
Confirmed Copy

SHEET 1 OF 2

ANNEXATION MAP NO. 2 TO  
REDLANDS UNIFIED SCHOOL DISTRICT  
COMMUNITY FACILITIES DISTRICT NO. 2021-1  
SAN BERNARDINO COUNTY  
STATE OF CALIFORNIA

This map shows the boundaries of areas annexed to Redlands Unified School District Community Facilities District No. 2021-1, San Bernardino County.

The boundaries of which Community Facilities District are shown and described on the map thereof which was previously recorded on May 13, 2021, in Book 89 of Maps of Assessment and Community Facilities Districts at Pages 65-67 and as Instrument No. 2021-0222371 in the Office of the County Recorder of the County of San Bernardino, State of California.



LEGEND

Boundaries of Area Annexed to Redlands Unified School District Community Facilities District No. 2021 (Legal Description on Sheet 2)

Prepared by:  
KeyAnalytics

(1) Filed in the office of the Clerk of the Board of Education of the Redlands Unified School District this 9<sup>th</sup> day of November, 2021

Michelle N. Lendin  
Clerk of the Board of Education  
Redlands Unified School District

(2) I hereby certify that the within map showing the boundaries of the area annexed to Redlands Unified School District Community Facilities District No. 2021-1, San Bernardino County, State of California, was approved by the Board of Education of the Redlands Unified School District at the regular meeting thereof, held on this 9<sup>th</sup> day of November, 2021 by its Resolution No. 2021-0222

Michelle N. Lendin  
Clerk of the Board of Education  
Redlands Unified School District

San Bernardino County Recorder's Certificate  
(3) THIS MAP HAS BEEN FILED UNDER DOCUMENT NUMBER 2021-0520643, THIS 17<sup>th</sup> DAY OF Nov, 2021, AT 2:51 P.M. IN BOOK 89 OF Boundary Maps AT PAGE(S) 94-95 AT THE REQUEST OF Redlands Unified School District IN THE AMOUNT OF \$ 19.00

BOB DUTTON  
ASSESSOR — RECORDER  
~~San Bernardino County~~ SAN BERNARDINO County

BY: Bob Dutton Deputy Recorder

Reference is hereby made to the Assessor maps of the County of San Bernardino for an exact description of the lines and dimensions of each lot and parcel.

SHEET 2 OF 2

ANNEXATION MAP NO. 2 TO  
REDLANDS UNIFIED SCHOOL DISTRICT  
COMMUNITY FACILITIES DISTRICT NO. 2021-1  
SAN BERNARDINO COUNTY  
STATE OF CALIFORNIA

LEGAL DESCRIPTION OF ANNEXATION MAP NO. 2 OF COMMUNITY FACILITIES DISTRICT NO. 2021-1

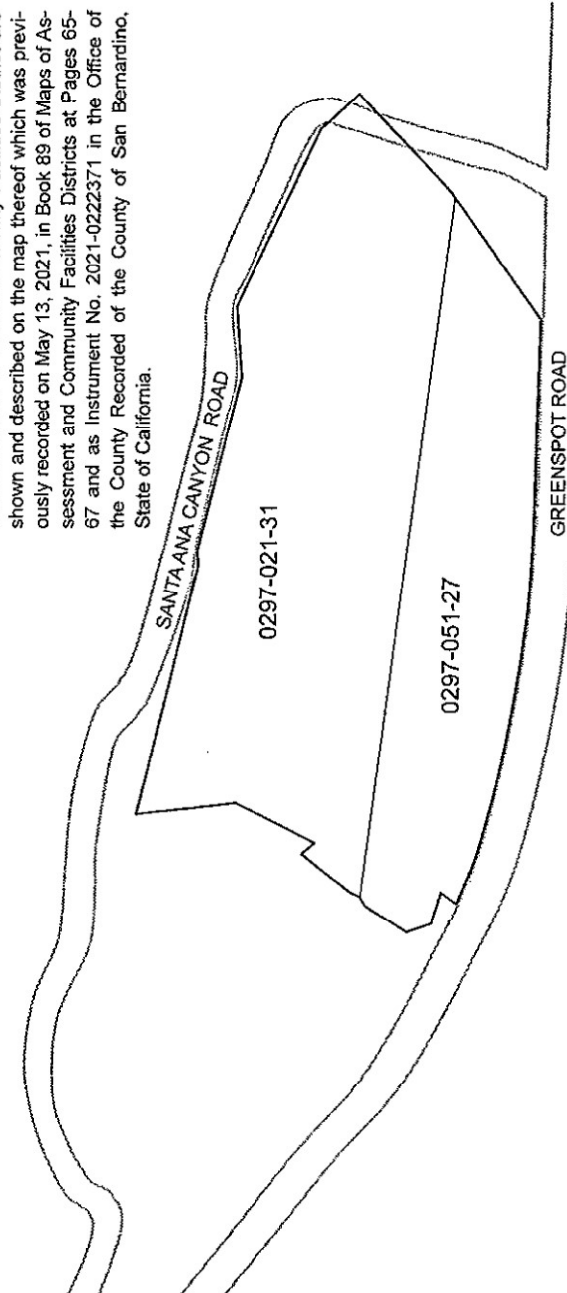
That portion of San Bernardino County Assessor Parcel Numbers 0297-021-32, 0297-021-36 and 0297-021-40 described as Lots 27, 28, 34 through 43, inclusive, 74 through 77, inclusive, and Lettered Lots E and F of Tract Map No. 18993-1, recorded on August 31, 2021, in Book 360 of Tract Maps at Pages 56 through 65, inclusive, in the Office of the San Bernardino County Recorder (recorded as Document No. 2021-0393892) and Lots 115 through 129, inclusive, 137 through 139, inclusive, and Lettered Lot F of Tract Map No. 18993-2, recorded on August 31, 2021, in Book 360 of Tract Maps at Pages 66 through 73, inclusive, in the Office of the San Bernardino County Recorder (recorded as Document No. 2021-0393893).

Reference is hereby made to the Assessor maps of the County of San Bernardino for an exact description of the lines and dimensions of each lot and parcel.



ANNEXATION MAP NO. 3 TO  
REDLANDS UNIFIED SCHOOL DISTRICT  
COMMUNITY FACILITIES DISTRICT NO. 2021-1  
SAN BERNARDINO COUNTY

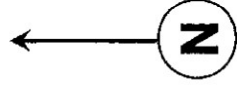
This map shows the boundaries of areas annexed to Redlands Unified School District Community Facilities District No. 2021-1, San Bernardino County.

The boundaries of which Community Facilities District are shown and described on the map thereof which was previously recorded on May 13, 2021, in Book 89 of Maps of Assessment and Community Facilities Districts at Pages 65-67 and as Instrument No. 2021-0222371 in the Office of the County Recorder of the County of San Bernardino, State of California.



**LEGEND**

-  Boundaries of Area Annexed to Redlands Unified School District Community Facilities District No. 2021-1
-  Boundaries of Assessor's Parcels
- ####-###-## Assessor's Parcel Number



Prepared by:  
KeyAnalytics

(1) Filed in the office of the Clerk of the Board of Education of the Redlands Unified School District this 9<sup>th</sup> day of November, 2021

Michelle M. Reader  
Clerk of the Board of Education  
Redlands Unified School District

(2) I hereby certify that the within map showing the boundaries of the area annexed to Redlands Unified School District Community Facilities District No. 2021-1, San Bernardino County, State of California, was approved by the Board of Education of the Redlands Unified School District at the regular meeting thereof, held on this 9<sup>th</sup> day of November, 2021 by its Resolution No. 24, 2021-2022.

Michelle M. Reader  
Clerk of the Board of Education  
Redlands Unified School District

San Bernardino County Recorder's Certificate  
(3) THIS MAP HAS BEEN FILED UNDER DOCUMENT NUMBER 2021-0520644, THIS 17<sup>th</sup> DAY OF Nov, 2021, AT 2:51 P.M. IN BOOK 89 OF Boundary Maps AT PAGE(S) 96 AT THE REQUEST OF Redlands Unified School District IN THE AMOUNT OF \$ 17.00

BOB DUTTON  
ASSESSOR -- RECORDER

~~SAN BERNARDINO COUNTY~~

BY: Bob Dutton  
Deputy Recorder

Reference is hereby made to the Assessor maps of the County of San Bernardino for an exact description of the lines and dimensions of each lot and parcel.

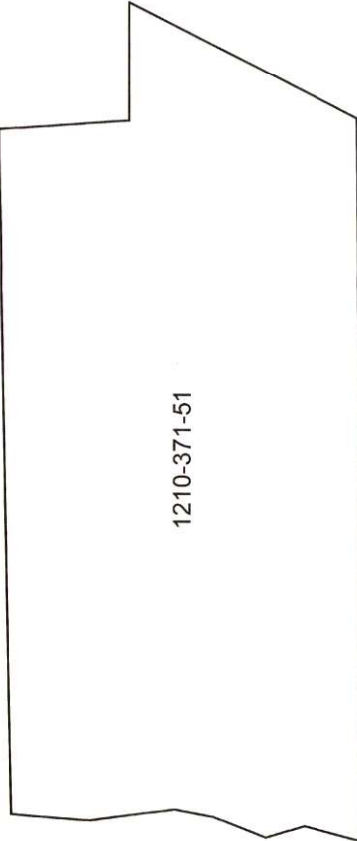
CONFIRMED COPY

SHEET 1 OF 1

ANNEXATION MAP NO. 4 TO  
REDLANDS UNIFIED SCHOOL DISTRICT  
COMMUNITY FACILITIES DISTRICT NO. 2021-1  
SAN BERNARDINO COUNTY

This map shows the boundaries of areas annexed to Redlands Unified School District Community Facilities District No. 2021-1, San Bernardino County.

The boundaries of which Community Facilities District are shown and described on the map thereof which was previously recorded on May 13, 2021, in Book 89 of Maps of Assessment and Community Facilities Districts at Pages 65-67 and as Instrument No. 2021-0222371 in the Office of the County Recorder of the County of San Bernardino, State of California.



GREENSPOT ROAD

LEGEND

	Boundaries of Area Annexed to Redlands Unified School District Community Facilities District No. 2021-1
####-###-##	Assessor's Parcel Number



Prepared by:  
KeyAnalytics

(1) Filed in the office of the Clerk of the Board of Education of the Redlands Unified School District this 9<sup>th</sup> day of August, 2022.

Melissa Ayala-Quintero  
Melissa Ayala-Quintero, Clerk of the Board of Education  
Redlands Unified School District

(2) I hereby certify that the within map showing the boundaries of the area annexed to Redlands Unified School District Community Facilities District No. 2021-1, San Bernardino County, State of California, was approved by the Board of Education of the Redlands Unified School District at the regular meeting thereof, held on this 9<sup>th</sup> day of August, 2022 by its Resolution No. 8.

Melissa Ayala-Quintero  
Melissa Ayala-Quintero, Clerk of the Board of Education  
Redlands Unified School District

(3) THIS MAP HAS BEEN FILED UNDER DOCUMENT NUMBER 2002-0234499, THIS 16<sup>th</sup> DAY OF August, 2022, AT 2:39 P.M. IN BOOK 90, OF Boundary Maps AT PAGE(S) 54, AT THE REQUEST OF Redlands Unified School District, IN THE AMOUNT OF \$ 11.60.

BOB DUTTON  
ASSESSOR — RECORDER  
COUNTY OF SAN BERNARDINO

BY: Carla Dutton

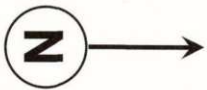
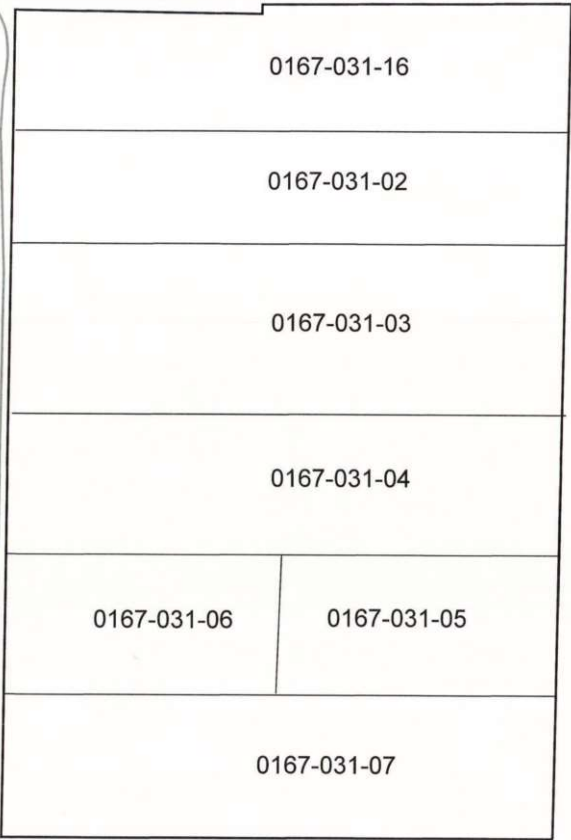
Reference is hereby made to the Assessor maps of the County of San Bernardino for an exact description of the lines and dimensions of each lot and parcel.

ANNEXATION MAP NO. 5 TO  
REDLANDS UNIFIED SCHOOL DISTRICT  
COMMUNITY FACILITIES DISTRICT NO. 2021-1  
SAN BERNARDINO COUNTY

LEGEND

- Boundaries of Area Annexed to Redlands Unified School District Community Facilities District No. 2021-1
- Boundaries of Assessor's Parcel
- ###-###-## Assessor's Parcel Number

This map shows the boundaries of areas annexed to Redlands Unified School District Community Facilities District No. 2021-1, San Bernardino County. The boundaries of which Community Facilities District are shown and described on the map thereof which was previously recorded on May 13, 2021, in Book 89 of Maps of Assessment and Community Facilities Districts at Pages 65-67 and as Instrument No. 2021-0222371 in the Office of the County Recorder of the County of San Bernardino, State of California.



Prepared by:  
KeyAnalytics

W DOMESTIC AVENUE

TEXAS STREET

(3) THIS MAP HAS BEEN FILED UNDER DOCUMENT NUMBER 2022-0381590, THIS 23<sup>rd</sup> DAY OF November, 2022, AT 9:41 A.M. IN BOOK 90, OF Boundary Maps AT PAGE 80, AT THE REQUEST OF Redlands Unified School District, IN THE AMOUNT OF \$ 11.00.

*Chris Wilkie*  
ASSESSOR — RECORDER  
COUNTY OF SAN BERNARDINO

BY: *Calvin Duran*  
DEPUTY RECORDER

Reference is hereby made to the Assessor maps of the County of San Bernardino for an exact description of the lines and dimensions of each lot and parcel.

(1) Filed in the office of the Clerk of the Board of Education of the Redlands Unified School District this 15 day of November 2022  
*Melissa Angela Quintana*  
Clerk of the Board of Education  
Redlands Unified School District

(2) I hereby certify that the within map showing the boundaries of the area annexed to Redlands Unified School District Community Facilities District No. 2021-1, San Bernardino County, State of California, was approved by the Board of Education of the Redlands Unified School District at the regular meeting thereof, held on this 15 day of November, 2022 by its Resolution No. 19.

*Melissa Angela Quintana*  
Clerk of the Board of Education  
Redlands Unified School District