

EXHIBIT B-1

AMENDED BOUNDARY MAP

SHEET 1 OF 2

AMENDED BOUNDARIES OF  
REDLANDS UNIFIED SCHOOL DISTRICT  
COMMUNITY FACILITIES DISTRICT NO. 2001-1  
COUNTY OF SAN BERNARDINO  
STATE OF CALIFORNIA

(1) Filed in the office of the Clerk of the Board of Education of the Redlands Unified School District this \_\_\_\_\_ day of \_\_\_\_\_, 2001.

Ron McPeck  
Clerk of the Board, Redlands Unified School District

LEGEND

	Amended Boundaries of CFD No. 2001-1
	Original Boundaries of CFD No. 2001-1
26	Section Number of T.1N., R.3W. and T.1S., R.3W.
	Section Quarter Lines

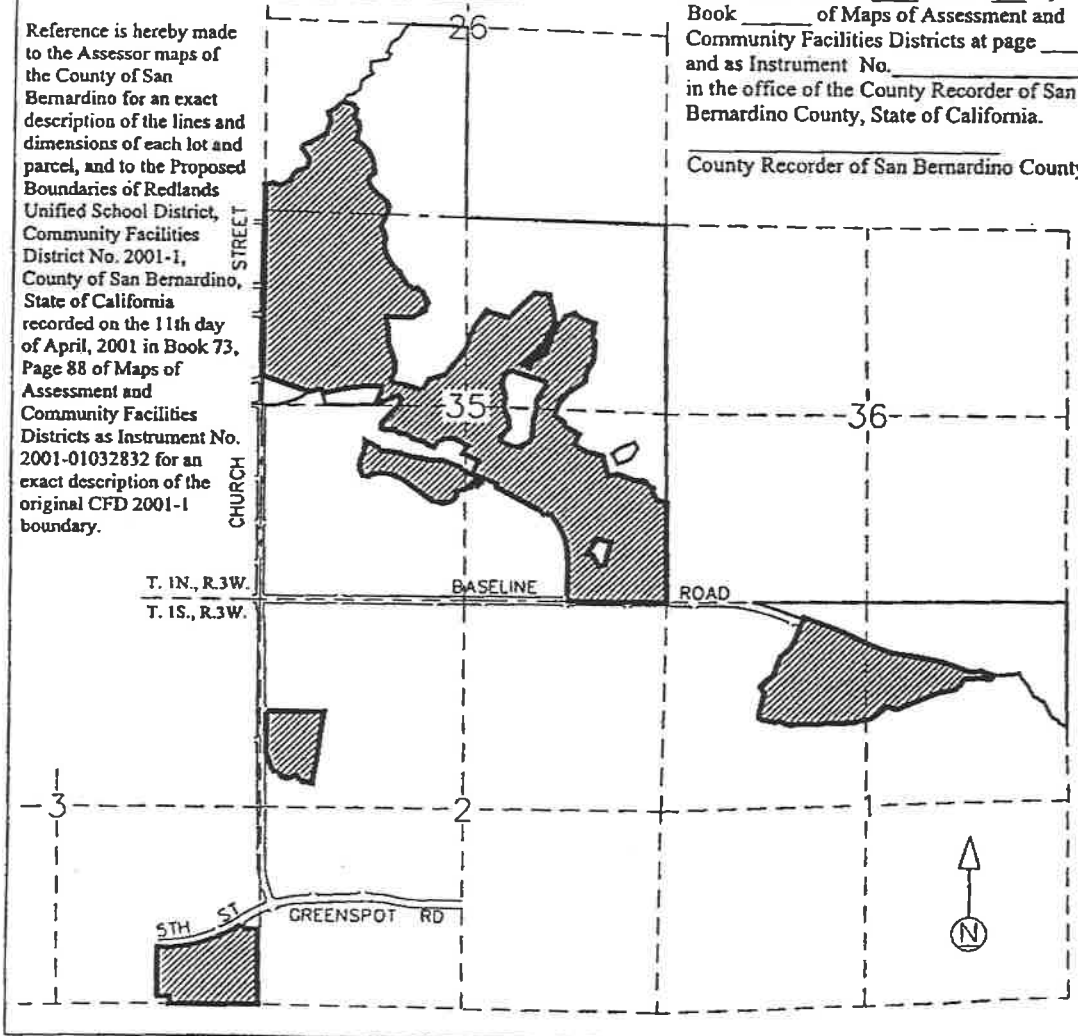
(2) I hereby certify that the within map showing the amended boundaries of Community Facilities District No. 2001-1, San Bernardino County, State of California, was approved by the Board of Education of the Redlands Unified School District at a regular meeting thereof, held on this \_\_\_\_\_ day of \_\_\_\_\_, 2001, by its Resolution No. \_\_\_\_\_.

Ron McPeck  
Clerk of the Board, Redlands Unified School District

(3) Filed this \_\_\_\_\_ day of \_\_\_\_\_, 2001, at the hour of \_\_\_\_\_ o'clock \_\_\_\_\_ m, in Book \_\_\_\_\_ of Maps of Assessment and Community Facilities Districts at page \_\_\_\_\_ and as Instrument No. \_\_\_\_\_ in the office of the County Recorder of San Bernardino County, State of California.

County Recorder of San Bernardino County

Reference is hereby made to the Assessor maps of the County of San Bernardino for an exact description of the lines and dimensions of each lot and parcel, and to the Proposed Boundaries of Redlands Unified School District, Community Facilities District No. 2001-1, County of San Bernardino, State of California recorded on the 11th day of April, 2001 in Book 73, Page 88 of Maps of Assessment and Community Facilities Districts as Instrument No. 2001-01032832 for an exact description of the original CFD 2001-1 boundary.



AMENDED BOUNDARIES OF  
REDLANDS UNIFIED SCHOOL DISTRICT  
COMMUNITY FACILITIES DISTRICT NO. 2001-1  
COUNTY OF SAN BERNARDINO  
STATE OF CALIFORNIA

Areas within the Amended Boundary of CFD 2001-1:

Assessor Parcel No. 0288-481-01;  
Assessor Parcel No. 0288-481-02;  
Assessor Parcel No. 0288-481-03;  
Assessor Parcel No. 1201-401-02;  
Assessor Parcel No. 1201-431-61;  
Assessor Parcel No. 1210-031-02;  
Assessor Parcel No. 1210-031-03;  
Assessor Parcel No. 1210-031-04;

Those portions of Assessor Parcel Nos. 0288-241-03, 0288-241-05 and 0288-251-44 as described by Certificate of Compliance No. 01-001, File No. LLA-00-001, recorded on April 24, 2001 as Document No. 20010153139 with the San Bernardino County Recorder;

those portions of Assessor Parcel Nos. 0288-151-04, 0288-241-03 and 0288-241-05 as described by Certificate of Compliance No. 01-002, File No. LLA-00-001, recorded on April 24, 2001 as Document No. 20010153140 with the San Bernardino County Recorder;

those portions of Assessor Parcel Nos. 0288-241-05, 0288-241-06 and 0288-251-44 as described by Certificate of Compliance No. 01-003, File No. LLA-00-001, recorded on April 24, 2001 as Document No. 20010153141 with the San Bernardino County Recorder;

those portions of Assessor Parcel Nos. 0288-241-06 and 0288-251-44 as described by Certificate of Compliance No. 01-004, File No. LLA-00-001, recorded on April 24, 2001 as Document No. 20010153142 with the San Bernardino County Recorder;

that portion of Assessor Parcel No. 0288-251-44 as described by Certificate of Compliance No. 01-005, File No. LLA-00-001, recorded on April 24, 2001 as Document No. 20010153143 with the San Bernardino County Recorder;

that portion of Assessor Parcel No. 0288-251-44 as described by Certificate of Compliance No. 01-006, File No. LLA-00-001, recorded on April 24, 2001 as Document No. 20010153144 with the San Bernardino County Recorder; and

those portions of Assessor Parcel Nos. 1210-371-01 and 1210-381-01 as described by Certificate of Compliance No. 01-007, File No. LLA-00-001, recorded on April 24, 2001 as Document No. 20010153145 with the San Bernardino County Recorder.

EXHIBIT B-2

SHEET 1 OF 1

PROPOSED BOUNDARIES OF  
 REDLANDS UNIFIED SCHOOL DISTRICT  
 COMMUNITY FACILITIES DISTRICT NO. 2001-1  
 COUNTY OF SAN BERNARDINO  
 STATE OF CALIFORNIA

(1) Filed in the office of the Clerk of the Board of Education of the Redlands Unified School District this \_\_\_\_\_ day of \_\_\_\_\_, 2001.

Ron McPeck  
 Clerk of the Board, Redlands Unified School District

(2) I hereby certify that the within map showing the proposed boundaries of Community Facilities District No. 2001-1, San Bernardino County, State of California, was approved by the Board of Education of the Redlands Unified School District at a regular meeting thereof, held on this \_\_\_\_\_ day of \_\_\_\_\_, 2001, by its Resolution No. \_\_\_\_\_.

Ron McPeck  
 Clerk of the Board, Redlands Unified School District

LEGEND

—	Boundaries of CFD No. 2001-1
26	Section Number of T.1N., R.3W. and T.1S., R.3W.
- - - -	Section Quarter Lines

(3) Filed this \_\_\_\_\_ day of \_\_\_\_\_, 2001, at the hour of \_\_\_\_\_ o'clock \_\_\_\_\_ m, in Book \_\_\_\_\_ of Maps of Assessment and Community Facilities Districts at page \_\_\_\_\_ and as Instrument No. \_\_\_\_\_, in the office of the County Recorder of San Bernardino County, State of California.

County Recorder of San Bernardino County

Assessor's Parcel Numbers Located Within CFD 2001-1:

- 0288-151-04
- 0288-241-03
- 0288-241-05
- 0288-241-06
- 0288-251-44
- 0288-481-01
- 0288-481-02
- 0288-481-03
- 1201-401-02
- 1201-431-61
- 1210-031-02
- 1210-031-03
- 1210-031-04
- 1210-371-01
- 1210-381-01

Reference is hereby made to the Assessor maps of the County of San Bernardino for an exact description of the lines and dimensions of each lot and parcel.

