

PROPOSED BOUNDARIES OF  
REDLANDS UNIFIED SCHOOL DISTRICT

COMMUNITY FACILITIES DISTRICT NO. 2006-1  
COUNTY OF SAN BERNARDINO  
STATE OF CALIFORNIA

(1) FILED IN THE OFFICE OF THE CLERK OF THE BOARD  
OF EDUCATION OF THE REDLANDS UNIFIED SCHOOL  
DISTRICT THIS 30 DAY OF October, 2006.

[Signature]  
CLERK OF THE BOARD  
REDLANDS UNIFIED SCHOOL DISTRICT

(2) I HEREBY CERTIFY THAT THE WITHIN MAP SHOWING  
THE PROPOSED BOUNDARIES OF  
COMMUNITY FACILITIES DISTRICT NO. 2006-01 OF SAN  
BERNARDINO COUNTY, STATE OF CALIFORNIA, WAS  
APPROVED BY THE BOARD OF EDUCATION OF THE  
REDLANDS UNIFIED SCHOOL DISTRICT AT A REGULAR  
MEETING THEREOF, HELD ON October 10,  
2006, BY ITS RESOLUTION NO. 21, 2006-07.

[Signature]  
CLERK OF THE BOARD  
REDLANDS UNIFIED SCHOOL DISTRICT

LEGEND

	BOUNDARIES OF COMMUNITY FACILITIES DISTRICT NO. 2006-1
	SECTION QUARTER LINES
	SECTION NUMBERS OF T.1S, R.3W

ASSESSOR'S PARCEL  
NUMBERS LOCATED  
WITHIN:

0297-011-09, 0297-011-19,  
0297-011-31, 0297-011-33,  
& 1210-381-04

REFERENCE IS HEREBY  
MADE TO THE ASSESSOR  
MAPS OF THE COUNTY OF  
SAN BERNARDINO FOR AN  
EXACT DESCRIPTION OF THE  
LINES AND DIMENSIONS OF  
EACH LOT AND PARCEL.

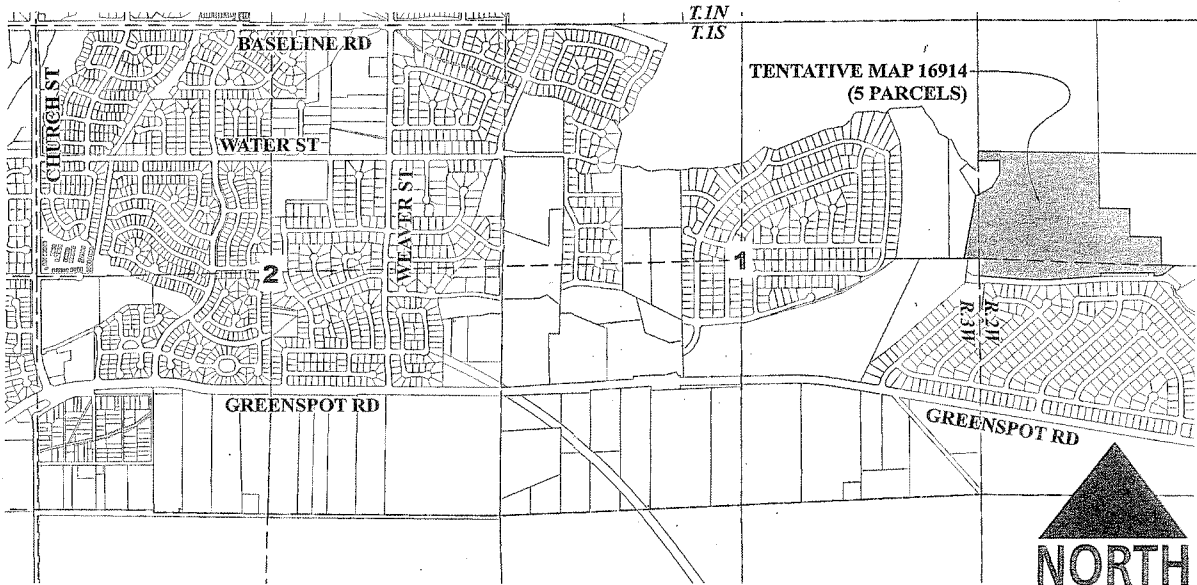
San Bernardino County Recorder's Certificate

This map has been filed under Document Number 2006-07016625,  
this 17th day of OCTOBER, 2006, at 10:17 A. M. in  
Book 81 of ASSESSMENT MAPS at page 18-20, at the  
Request of REDLANDS UNIFIED SCHOOL DISTRICT  
in the amount of \$ 11:00.

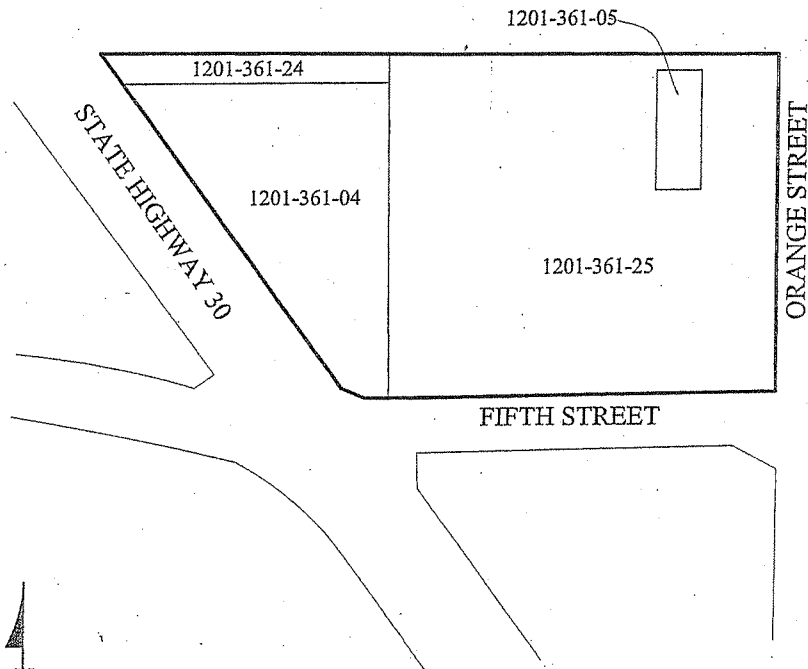
Larry Walker  
Auditor/Controller-Recorder  
County of San Bernardino

Recorded in Official Records,  
County of San Bernardino  
Book: 2006-070525  
10/17/2006 10:17 AM

By: [Signature]  
Deputy Recorder



PROPOSED BOUNDARIES OF  
REDLANDS UNIFIED SCHOOL DISTRICT  
COMMUNITY FACILITIES DISTRICT NO. 2006-1  
COUNTY OF SAN BERNARDINO  
STATE OF CALIFORNIA



NOT TO SCALE

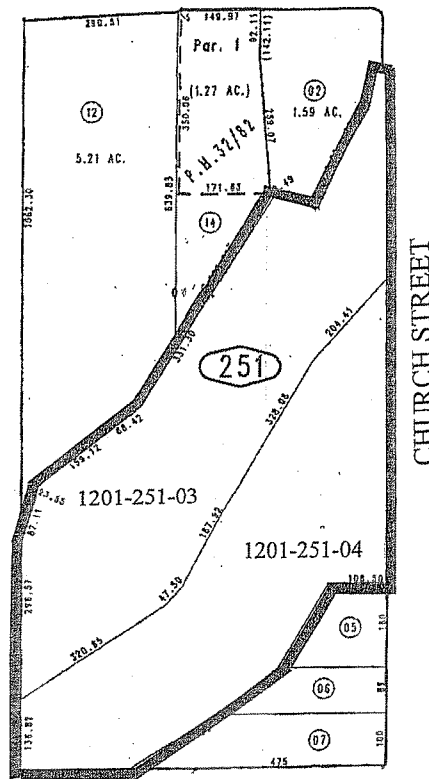
LEGEND

	BOUNDARIES OF COMMUNITY FACILITIES DISTRICT NO. 2006-1
	ASSESSOR'S PARCEL NUMBER
	ASSESSOR PARCEL LINE

REFERENCE IS HEREBY MADE TO  
THE ASSESSOR MAPS OF THE COUNTY  
OF SAN BERNARDINO FOR AN EXACT  
DESCRIPTION OF THE LINES AND  
DIMENSIONS OF EACH LOT AND PARCEL

PROPOSED BOUNDARIES OF  
REDLANDS UNIFIED SCHOOL DISTRICT  
COMMUNITY FACILITIES DISTRICT NO. 2006-1  
COUNTY OF SAN BERNARDINO  
STATE OF CALIFORNIA



BASELINE AVENUE



CHURCH STREET



LEGEND

	BOUNDARIES OF COMMUNITY FACILITIES DISTRICT NO. 2006-1
XXXX-XXX-XX	ASSESSOR'S PARCEL NUMBER
	ASSESSOR PARCEL LINE

REFERENCE IS HEREBY MADE TO  
THE ASSESSOR MAPS OF THE COUNTY  
OF SAN BERNARDINO FOR AN EXACT  
DESCRIPTION OF THE LINES AND  
DIMENSIONS OF EACH LOT AND PARCEL