



Improvement Area A of Community Facilities District No. 10

Annual Special Tax Report

Fiscal Year Ending June 30, 2025

Poway Unified School District

2025 / 2026



A division of California Financial Services

School District

Poway Unified School District
15250 Avenue of Science
San Diego, CA 92128
T. (858) 521-2800

Fiscal Agent

Zion Bancorporation, National Association
707 Wilshire Boulevard, Suite 5000
Los Angeles, CA 90017
T. (213) 593-3152

Special Tax Administrator

KeyAnalytics
27201 Puerta Real, Suite 260
Mission Viejo, CA 92691
T. (949) 282-1077

Special Assessment Questions
T. (877) 575-0265
taxinfo@calschools.com

Bond Counsel

Chapman & Cutler, LLP
595 Market Street
San Francisco, CA 94105

Table of Contents

Introduction	1
I. CFD Background	3
A. Location	3
B. Formation	3
C. Bonds	4
II. Fiscal Year 2024/2025 Special Tax Levy	6
A. Special Tax Levy	6
B. Special Tax Collections and Delinquencies	7
III. Fund and Account Activity and Balances	8
A. Fiscal Agent Accounts	8
B. Sources and Uses of Funds	9
IV. Senate Bill 165	10
A. Authorized Facilities	10
B. 2001 Special Tax Bonds	14
C. Special Tax Refunding Bonds, Series 2011	15
D. Special Tax Refunding Bonds, Series 2017	16
E. Special Taxes	17
F. Pooled Special Tax Accounts	18
V. Annual Special Tax Requirement	20
A. Annual Special Tax Requirement	20
B. Administrative Expense Budget	21
VI. Special Tax Classification	22
A. Developed Property	22
VII. Fiscal Year 2025/2026 Special Tax Levy	23

Exhibit A – Rate and Method of Apportionment

Exhibit B – CFD Boundary Map

Exhibit C – Assessor’s Parcel Maps

Exhibit D – Special Tax Refunding Bonds, Series 2017 Debt Service Schedule

Exhibit E – Delinquent Annual Special Tax Report

Exhibit F – Summary of Transactions for Fiscal Agent Accounts

Exhibit G – Annual Special Tax Roll for Fiscal Year 2025/2026

Introduction

Improvement Area (“IA”) A of Community Facilities District (“CFD”) No. 10 of the Poway Unified School District (the “School District”) was formed pursuant to the terms and provisions of the “Mello-Roos Community Facilities Act of 1982”, as amended (the “Act”), being Chapter 2.5, Part 1, Division 2, Title 5 of the Government Code of the State of California. IA A of CFD No. 10 is authorized under the Act to finance certain facilities (the “Authorized Facilities”) as established at the time of formation.

This Annual Special Tax Report (the “Report”) summarizes certain general and administrative information and analyzes the financial obligations of IA A of CFD No. 10 for the purpose of establishing the Annual Special Tax Levy for Fiscal Year 2025/2026. The Annual Special Tax Levy is calculated pursuant to the Rate and Method of Apportionment (the “RMA”) which is attached to this Report as Exhibit A.

All capitalized terms not defined herein are used as defined in the RMA and/or Bond Indenture, dated February 1, 2017, between the School District and Zion Bancorporation, National Association acting as Fiscal Agent (the “Fiscal Agent”).

This Report is organized into the following Sections:

Section I – CFD Background

Section I provides background information relating to the formation of IA A of CFD No. 10 and the long-term obligations issued to finance the Authorized Facilities.

Section II – Fiscal Year 2024/2025 Special Tax Levy

Section II provides information regarding the levy and collection of Special Taxes for Fiscal Year 2024/2025 and an accounting of the remaining collections.

Section III – Fund and Account Balances

Section III examines the financial activity within the funds and accounts associated with IA A of CFD No. 10.

Section IV – Senate Bill 165

Section IV provides information required under Senate Bill 165 regarding the initial allocation of bond proceeds and the expenditure of the Annual Special Taxes and bond proceeds utilized to fund the Authorized Facilities of IA A of CFD No. 10 for Fiscal Year 2024/2025.

Section V – Annual Special Tax Requirement

Section V calculates the Annual Special Tax Requirement based on the obligations of IA A of CFD No. 10 for Fiscal Year 2025/2026.

Section VI – Special Tax Classification

Section VI provides updated information regarding the Special Tax classification of parcels within IA A of CFD No. 10.

Section VII – Fiscal Year 2025/2026 Special Tax Levy

Section VII provides the Fiscal Year 2025/2026 Special Tax levy based on updated Special Tax classifications and the Annual Special Tax Requirement.

I. CFD Background

This Section provides background information regarding the formation of IA A of CFD No. 10 and the bonds issued to fund the Authorized Facilities.

A. Location

CFD No. 10 is located in several non-contiguous areas of land located in a portion of the School District which is within the City of San Diego. It straddles State Route 56 to the north and south and includes parcels on both the east and west side of Camino del Sur adjacent to Westview High School. IA A of CFD No. 10 is located along Camino del Sur, south of Carmel Valley Road, to the west of the community known as the Rancho Peñasquitos area, to the east by Pacific Highlands Ranch and to the south of Black Mountain Ranch. IA A of CFD No. 10 is located approximately 4 miles east of Interstate 5 and approximately 3 miles west of Interstate 15. For reference, the boundary map of IA A of CFD No. 10 is included as Exhibit B and the current Assessor's Parcel maps are included as Exhibit C.

B. Formation

CFD No. 10 was formed and established by the School District on August 27, 2001, under the Act, following a public hearing conducted by the Board of Education of the School District (the "Board"), as legislative body of CFD No. 10, and a landowner election at which the qualified electors of CFD No. 10 authorized IA A of CFD No. 10 to incur bonded indebtedness in an amount not to exceed \$13,000,000 and approved the levy of Annual Special Taxes.

CFD No. 10 was formed pursuant to the Subarea IV – Torrey Highlands School Impact Mitigation Agreement dated July 1, 1996, with various owners to impose the levy of special taxes to finance the public school facilities and related infrastructure required by the School District. Additionally, IA A of CFD No. 10 was formed pursuant to the Joint Community Facilities Agreement by and between the School District and the City dated July 9, 2001.

The table below provides information related to the formation of CFD No. 10.

**Board Actions Related to
Formation of CFD No. 10**

Resolution	Board Meeting Date	Resolution No.
Resolution of Intention	April 16, 2001	42-2001
Resolution to Incur Bonded Indebtedness	April 16, 2001	43-2001
Resolution of Formation	August 27, 2001	08-2002
Ordinance Levying Special Taxes	August 27, 2001	2002-01

A Notice of Special Tax Lien was recorded in the real property records of the County on September 21, 2001, on all property within IA A of CFD No. 10 as Document No. 2001-0681526.

C. Bonds

1. 2001 Special Tax Bonds

On October 25, 2001, the 2001 Special Tax Bonds (“2001 Bonds”) of the School District were issued in the amount of \$9,700,000 for IA A of CFD No. 10. The 2001 Bonds were issued under and subject to the terms of the Bond Indenture dated September 1, 2001 (“2001 Indenture”), and the Act. The proceeds of the 2001 Bonds were used to (i) finance, either directly or indirectly, the acquisition and construction of certain road improvements, (ii) fund a reserve fund for the 2001 Bonds, (iii) pay interest on the 2001 Bonds through September 1, 2002, (iv) pay certain administrative expenses of IA A of CFD No. 10, and (v) pay the costs of issuing the 2001 Bonds.

2. Special Tax Refunding Bonds, Series 2011

On November 3, 2011, the Special Tax Refunding Bonds, Series 2011 (“2011 Bonds”) of the School District were issued in the amount of \$9,670,000. The 2011 Bonds were issued under and subject to the terms of the Bond Indenture dated November 1, 2011 (“2011 Indenture”), and the Act. The 2011 Bonds were used to defease and refund the 2001 Bonds. The 2011 Bonds are Local Obligation Bonds of the Poway Unified School District Public Financing Authority (“Authority”) and are utilized, along with the debt service payments from IA A of CFD No. 6 and IA B of CFD No. 10, to pay the debt service of the 2011 Special Tax Refunding Bonds of the Authority.

3. Special Tax Refunding Bonds, Series 2017

On February 2, 2017, the Special Tax Refunding Bonds, Series 2017 (“2017 Bonds”, collectively with the 2001 Bonds and 2011 Bonds, “Bonds”), of the School District were issued in the amount of \$7,030,000. The 2017 Bonds were issued under and subject to the terms of the Bond Indenture dated February 1, 2017 (“2017 Indenture”), and the Act. The purpose of the 2017 Bonds is to defease and refund a portion of the 2011 Special Tax Refunding Bonds of the Authority, thereby causing the discharge of the 2011 Bonds. The 2017 Bonds are Local Obligations Bonds of the Authority and are utilized, along with the debt service payments from IA A of CFD No. 6 and IA B of CFD No. 10, to pay debt service of the Special Tax Revenue Refunding Bonds, Series 2017A of the Authority. For more information regarding the use of the 2017 Bonds proceeds, please refer to Section IV of this Report.

A copy of the debt service schedule of the 2017 Bonds is included as Exhibit D.

II. Fiscal Year 2024/2025 Special Tax Levy

Each Fiscal Year, IA A of CFD No. 10 levies and collects Special Taxes pursuant to the RMA in order to meet the obligation for that Fiscal Year. This Section provides a summary of the levy and collection of Special Taxes in Fiscal Year 2024/2025.

A. Special Tax Levy

The Special Tax levy for Fiscal Year 2024/2025 is summarized by Special Tax classification in the table below.

Fiscal Year 2024/2025 Annual Special Tax Levy

Tax Class/ Land Use	Sq. Footage	Number of Units/Acres	Assigned Annual Special Tax Rate	Total Assigned Annual Special Taxes
Zone 1				
1	≤ 3,000 Sq. Ft.	25 Units	\$3,250.60 per Unit	\$81,265.00
2	3,001 Sq. Ft. to 3,300 Sq. Ft.	0 Units	\$3,606.72 per Unit	0.00
3	> 3,300 Sq. Ft.	40 Units	\$3,962.86 per Unit	158,514.40
Developed Property		65 Units	NA	\$239,779.40
Undeveloped Property		0.00 Acres	\$0.00 per Acre	0.00
Zone 2				
4	≤ 2,400 Sq. Ft.	24 Units	\$2,182.18 per Unit	\$52,372.32
5	2,401 Sq. Ft. to 2,600 Sq. Ft.	18 Units	\$2,538.32 per Unit	45,689.76
6	2,601 Sq. Ft. to 2,800 Sq. Ft.	48 Units	\$2,775.74 per Unit	133,235.52
7	2,801 Sq. Ft. to 3,100 Sq. Ft.	57 Units	\$3,131.88 per Unit	178,517.16
8	3,101 Sq. Ft. to 3,400 Sq. Ft.	3 Units	\$3,369.30 per Unit	10,107.90
9	> 3,400 Sq. Ft.	105 Units	\$3,844.16 per Unit	403,636.80
Developed Property		255 Units	NA	\$823,559.46
Undeveloped Property		0.00 Acres	\$0.00 per Acre	0.00
Zone 3				
10	≤ 1,700 Sq. Ft.	14 Units	\$935.84 per Unit	\$13,101.76
11	1,701 Sq. Ft. to 1,850 Sq. Ft.	14 Units	\$1,054.54 per Unit	14,763.56
12	1,851 Sq. Ft. to 2,000 Sq. Ft.	0 Units	\$1291.96 per Unit	0.00
13	> 2,000 Sq. Ft.	37 Units	\$1,410.66 per Unit	52,194.42
Developed Property		65 Units	NA	\$80,059.74
Undeveloped Property		0.00 Acres	\$0.00 per Acre	0.00
Total		385 Units		\$1,143,398.60

B. Special Tax Collections and Delinquencies

Delinquent Annual Special Taxes for IA A of CFD No. 10, as of June 30, 2025, for Fiscal Year 2024/2025 is summarized in the table below. Based on the Foreclosure Covenant outlined in the 2017 Indenture and the current delinquency rates, no parcel exceeds the foreclosure threshold. A detailed listing of the Fiscal Year 2024/2025 Delinquent Annual Special Taxes, based on the year end collections and information regarding the Foreclosure Covenant is provided as Exhibit E.

IA A of CFD No. 10 Special Tax Collections and Delinquencies

Fiscal Year	Subject Fiscal Year					June 30, 2025	
	Aggregate Special Tax	Parcels Delinquent ^[1]	Amount Collected	Amount Delinquent	Delinquency Rate	Remaining Amount Delinquent	Remaining Delinquency Rate
2020/2021	\$1,065,439.00	N/A	\$1,061,209.00	\$4,230.00	0.40%	\$0.00	0.00%
2021/2022	1,080,060.00	N/A	1,070,535.00	9,525.00	0.88%	0.00	0.00%
2022/2023	1,098,990.72	2	1,096,579.46	2,411.26	0.22%	0.00	0.00%
2023/2024	1,120,980.42	2	1,118,520.91	2,459.51	0.22%	0.00	0.00%
2024/2025	1,143,398.60	3	1,140,250.85	3,147.75	0.28%	3,147.75	0.28%

[1] Information not provided by previous administrator for Fiscal Years 2020/2021 through 2021/2022.

III. Fund and Account Activity and Balances

Special Taxes are collected by the County Tax Collector as part of the regular property tax bills. Once received by the County Tax Collector the Special Taxes are transferred to the School District where they are then deposited into the Special Tax Fund held with the Fiscal Agent. Special Taxes are periodically transferred to make debt service payments on the 2017 Bonds and pay other authorized costs. This Section summarizes the account activity and balances of the funds and accounts associated with IA A of CFD No. 10.

A. Fiscal Agent Accounts

Funds and accounts associated with the Bonds are currently being held by the Fiscal Agent. These funds and accounts were established pursuant to the 2017 Indenture.

The balances, as of June 30, 2025, of the funds, accounts and subaccounts by the Fiscal Agent are listed in the table below. Exhibit F contains a detailed listing of the transactions within these funds for Fiscal Year 2024/2025.

**Fund and Account Balances
as of June 30, 2025**

Account Name	Account Number	Balance
Special Tax Fund	7150931A	\$1,043,922.10
Interest Fund	7150931B	0.37
Principal Fund	7150931C	0.00
Administration Expense Fund	7150931I	41,841.64
Redemption Fund	7150931R	1,339.98
Total		\$1,087,104.09

B. Sources and Uses of Funds

The sources and uses of funds collected and expended by IA A of CFD No. 10 are limited based on the restrictions as described within the 2017 Indenture. The table below presents the sources and uses of all funds and accounts for IA A of CFD No. 10 from July 1, 2024, through June 30, 2025. For a more detailed description of the sources and uses of funds please refer to Section III of the 2017 Indenture.

Fiscal Year 2024/2025 Sources and Uses of Funds

Sources	
Bond Proceeds	\$0.00
Annual Special Tax Receipts	1,156,200.55
Investment Earnings	32,768.08
Total	\$1,188,968.63
Uses	
Interest Payments	(\$209,500.00)
Principal Payments	(460,000.00)
Authorized Facilities	0.00
Administrative Expenses	(32,517.00)
Transfer to the 2012 Certificates Payment Account	(463,800.98)
Total	(\$1,165,817.98)

IV. Senate Bill 165

Senate Bill 165, or the Local Agency Special Tax and Bond Accountability Act (“SB 165”), requires any local special tax/local bond measure subject to voter approval contain a statement indicating the specific purposes of the Special Tax, require that the proceeds of the Special Tax be applied to those purposes, require the creation of an account into which the proceeds shall be deposited, and require an annual report containing specified information concerning the use of the proceeds. SB 165 only applies to CFDs authorized on or after January 1, 2001, in accordance with Sections 50075.1 and 53410 of the California Government Code.

A. Authorized Facilities

Pursuant to the Mello-Roos Community Facilities Act of 1982, as Amended (“Act”), IA A of CFD No. 10 can only be used to fund the “Authorized Facilities” as outlined at the time of formation. The following is an excerpt which describes the Authorized Facilities of CFD No. 10:

School Facilities - School Facilities shall include the acquisition, acquisition, planning, construction and/or financing of those school facilities, including classrooms, multi-purpose, administration and auxiliary space at each school, central support and administrative facilities, interim housing, transportation and special education facilities, together with furniture, equipment and technology, needed by the School District in order to serve directly or indirectly the student population to be generated as a result of the development of the property within CFD No. 10, together with all land or interests in land required for the construction of such facilities and all land or interests in land required to be provided by the School District as mitigation of environmental impacts associated with the development of such school facilities as well as all that portion of the related incidental expenses and the costs to the School District related to the negotiation, execution and implementation of the Subarea IV – Torrey Highlands School Impact Mitigation Agreement dated as of July 1, 1996 between the District and each “Owner” named therein allocable to the properties

within CFD No. 10. “School Facilities” shall also mean the acquisition, planning, construction, and/or financing of other additional school facilities, including classrooms, multi-purpose, administration and auxiliary space at each school, central support and administrative facilities, interim housing, transportation and special education facilities, together with furniture, equipment and technology, needed by the School District to serve the student population of the School District and which are financed in whole or in part from the revenues of special taxes levied in any fiscal year on Developed Property within any Improvement Area or Improvement Areas in excess of that required to satisfy the special tax requirements for such Improvement Area or Improvement Areas for such fiscal year.

The School facilities shall also include the attributable costs of engineering, design, planning, materials testing, coordination, construction staking and construction, together with the expenses related to the issuance and sale of any debt as defined in Section 53317(d) of the Act, including but not limited to, underwriters’ discount, appraisals, market studies, reserve fund, capitalized interest, bond counsel, special tax consultant, bond and official statement printing, administrative expenses of the School District, CFD No. 10 and bond trustee or fiscal agent related to the CFD No. 10 and any such debt and all the other incidental expenses..

The School Facilities shall be constructed, whether or not acquired in their completed states, pursuant to plans and specifications approved by the School District.

The School Facilities listed are representative of the types of improvements authorized to be financed by CFD No. 10. Detailed scope and limits of specific projects will be determined as appropriate, consistent with the standards of the School District. Addition, deletion, or modification of descriptions of School Facilities may be made

consistent with the requirements of the Board of Education of the School District, the CFD, and the Act.

City Improvements - City Improvements means the acquisition, planning, construction and/or financing of those improvements to be owned by the City of San Diego, including (a) Camino Ruiz Northerly (grading 4 lanes, construction 2 lanes) from “A” Street to Carmel Valley Road, (b) Camino Ruiz Northerly (completion of full length, 4 lane improvements, (c) “B” Street from “A” Street to Camino Ruiz, (d) “A” Street and (e) Camino Ruiz/SR 56 Phase I interchange improvements

The City Improvements shall also include the attributable costs of right of way acquisition, grading and site preparation, slope and erosion control, sanitary sewers, storm drainage, water distribution facilities traffic signals, street lightning, street paving, curb, gutter, sidewalk, median, landscaping, dry utilities, engineering, design, planning, materials testing, coordination, construction staking and construction, construction management and supervision together with the expenses related to the issuance and sale of any “debt” as defined in Section 53317(d) of the Act, including but not limited to, underwriters’ discount, appraisals, market studies, reserve fund, capitalized interest, bond counsel, special tax consultant, bond and official statement printing, administrative expenses of the District, CFD No. 10 and bond trustee or fiscal agent related to any Improvement Area in CFD No. 10 and any such debt and all other incidental expenses.

The City Improvements shall be constructed, whether or not acquired in their completed states, pursuant to plans and specification approved by the City of San Diego.

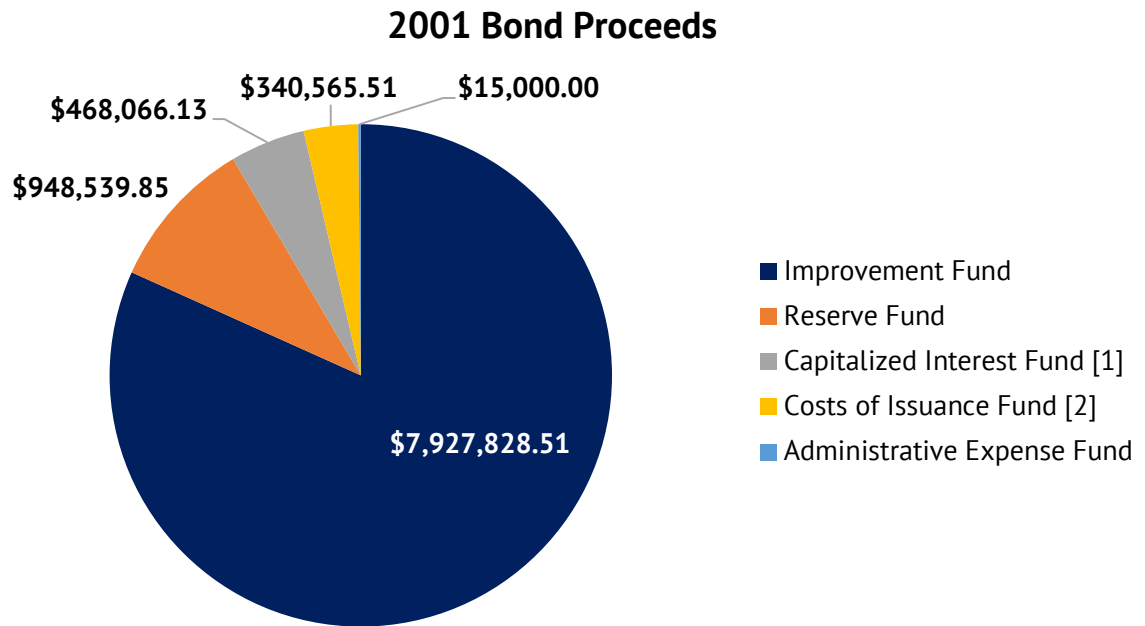
The City Improvements listed are representative of the types of improvement that are to be owned, operated, and maintained by the City and to be financed by CFD No. 10 Detailed scope and limits of specific projects will be determined as appropriate, consistent with the

standards of the City. Addition, deletion, or modification of descriptions of City Improvements may be made consistent with the requirements of the City subject to the approval by the Board of Education of the School District, CFD No. 10, and the Act.

B. 2001 Special Tax Bonds

1. Bond Proceeds

In accordance with the 2001 Indenture by and between IA A of CFD No. 10 and the Fiscal Agent, the proceeds of the 2001 Bonds were deposited in the amount \$9,700,000 into the funds and accounts shown in the graph below.



[1] Capitalized Interest through September 1, 2002.

[2] Costs of Issuance includes Underwriter's Discount, Bond Counsel fees, Disclosure Counsel fees, Special Tax Consultant fees, Municipal Advisor fees, Trustee fees, Printing Costs, and other issuance costs. The actual amount deposited into the Costs of Issuance Fund was \$156,982.01.

2. Construction Funds and Accounts

All construction funds generated from the issuance of the 2007 Bonds for School Facilities have been expended on the Authorized School Facilities of IA A of CFD No. 10 and all construction accounts have been closed. For information for previously accrued and expended funds, please refer to previous Reports.

C. Special Tax Refunding Bonds, Series 2011

1. Bond Proceeds

In accordance with the 2011 Indenture by and between IA A of CFD No. 10 and the Fiscal Agent, the proceeds of the 2011 Bonds were deposited in the amount \$9,670,000, less the Authority Discount of \$261,353.07, into the funds and accounts shown in the graph below.

2011 Bond Proceeds



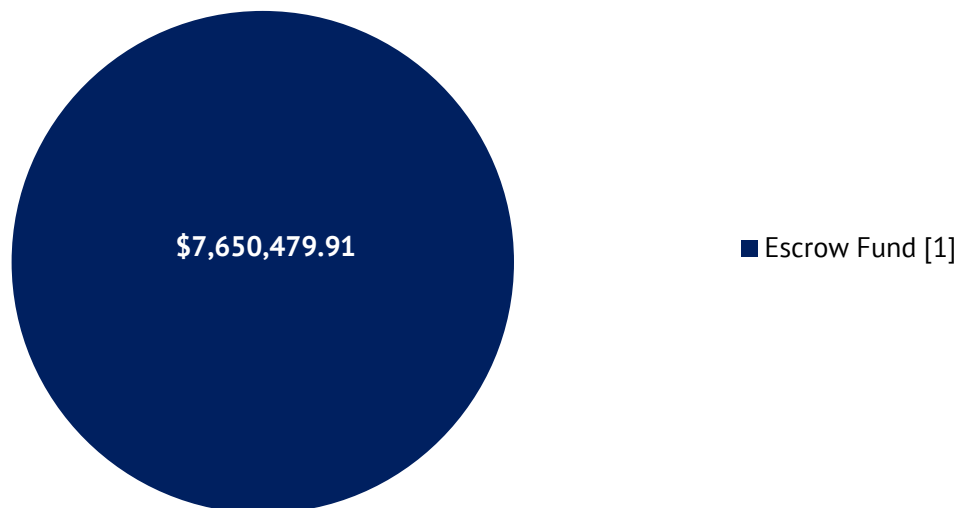
[1] Funds used to redeem in full the 2001 Bonds on March 1, 2012.

D. Special Tax Refunding Bonds, Series 2017

1. Bond Proceeds

In accordance with the 2017 Indenture by and between IA A of CFD No. 10 and the Fiscal Agent, the proceeds of the 2017 Bonds were deposited in the amount \$7,030,000, plus \$802,228.80 in Net Original Premium and less the Authority Discount of \$181,748.89, into the funds and accounts shown in the graph below.

2017 Bond Proceeds



[1] Funds used to redeem in full the 2011 Bonds on March 15, 2017.

E. Special Taxes

IA A of CFD No. 10 has covenanted to levy the Special Taxes in accordance with the RMA. The Special Taxes collected can only be used for the purposes as outlined in the 2017 Indenture. The table below presents a detailed accounting of the Special Taxes collected and expended by IA A of CFD No. 10 within the Special Tax Fund created under the 2017 Indenture.

Special Tax Fund

Balance as of July 1, 2024		\$1,013,485.93
Accruals		\$1,186,816.96
Special Tax Deposits	\$1,156,200.55	
Investment Earnings	30,616.41	
Expenditures		(\$1,156,380.79)
Transfer to the Administrative Expense Fund	(\$23,189.69)	
Transfer to the Interest Account	(\$209,390.12)	
Transfer to the Principal Account	(460,000.00)	
Transfer to the 2012 Certificates Payment Account	(463,800.98)	
Balance as of June 30, 2025		\$1,043,922.10

F. Pooled Special Tax Accounts

On August 9, 2007, the School District issued the Lease Revenue Bonds, Series 2007 (“2007 LRBs”) in the amount of \$34,783,991. The construction proceeds of the 2007 LRBs were used to (i) complete the expansion projects at several existing school sites, (ii) acquire, construct, and install central administrative and support facilities, and (iii) repay an advance of funds for the construction of improvements at Rancho Bernardo High School. On September 4, 2012, the 2007 LRBs were refinanced by the School District with the issuance of the 2012 School Facilities Restructuring Program Certificates of Participation (“2012 Certificates”). Special Taxes remaining after all obligations are paid are being used to pay Lease Payments on the 2012 Certificates. The table below presents a detailed listing of the sources and uses of CFD Special Taxes associated with the 2012 Certificates through June 30, 2025.

2012 Certificates Payment Account (2007 Custodial Account)

Balance as of July 1, 2024		\$11,547,494.45
Accruals		\$5,445,276.59
Investment Earnings	\$549,767.78	
Transfer from IA A of CFD No. 6 Special Tax Fund	621,360.36	
Transfer from IA B of CFD No. 6 Special Tax Fund	1,363,708.12	
Transfer from IA C of CFD No. 6 Special Tax Fund	180,956.94	
Transfer from IA A of CFD No. 10 Special Tax Fund	463,800.98	
Transfer from IA B of CFD No. 10 Special Tax Fund	232,082.75	
Transfer from IA F of CFD No. 10 Special Tax Fund	44,278.39	
Transfer from IA A of CFD No. 14 Special Tax Fund	1,148,560.15	
Transfer from 2022B PFA Rental Payment Surplus Account	840,761.12	
Expenditures		(\$2,171,578.00)
Lease Payments	(\$2,166,878.00)	
Administrative Expenses	(4,700.00)	
Balance as of June 30, 2025		\$14,821,193.04

A portion of the remaining Special Taxes were deposited into a pooled Improvement Area Surplus Custodial Account. The balance of the Improvement Area Surplus Custodial account will be used to fund projects within the authorized facilities of each participating CFD. The table below shows the accounts and expenditures in the Improvement Area Surplus Custodial Account through June 30, 2025.

Improvement Area Surplus Custodial Account

Balance as of July 1, 2024		\$673,500.40
Accruals		\$28,598.39
Investment Earnings	\$28,598.39	
Expenditures		(\$68,061.17)
Capital Facilities Planning Expenses	(\$23,324.00)	
Authorized Facilities	(23,744.00)	
Administrative Expenses	(20,993.17)	
Balance as of June 30, 2025		\$634,037.62

V. Annual Special Tax Requirement

This Section outlines the calculation of the Annual Special Tax Requirement of IA A of CFD No. 10 based on the financial obligations for Fiscal Year 2025/2026.

A. Annual Special Tax Requirement

The Annual Special Taxes of IA A of CFD No. 10 are calculated in accordance and pursuant to the RMA. Pursuant to the 2017 Indenture, any amounts not required to pay Administrative Expenses and Debt Service on the Bonds shall be transferred to the 2012 Certificates Payment Account. The table below shows the calculation of the Annual Special Tax Requirement for Fiscal Year 2025/2026.

Annual Special Tax Requirement for IA A of CFD No. 10

Fiscal Year 2024/2025 Remaining Sources		\$1,043,922.47
Balance of Special Tax Fund	\$1,043,922.10	
Balance of Interest Fund	0.37	
Balance of Principal Fund	0.00	
Anticipated Special Taxes	0.00	
Fiscal Year 2024/2025 Remaining Obligations		(\$1,043,922.47)
September 1, 2025 Interest Payment	(\$99,000.00)	
September 1, 2025 Principal Payment	(495,000.00)	
Transfer to the 2012 Certificates Payment Account	(449,922.47)	
Fiscal Year 2024/2025 Surplus (Reserve Fund Draw)		\$0.00
Fiscal Year 2025/2026 Obligations		(\$1,166,266.72)
Administrative Expense Budget	(\$23,653.27)	
Anticipated Special Tax Delinquencies ^[1]	(3,210.71)	
March 1, 2026 Interest Payment	(86,625.00)	
September 1, 2026 Interest Payment	(86,625.00)	
September 1, 2026 Principal Payment	(545,000.00)	
Transfer to the 2012 Certificates Payment Account	(421,152.75)	
Fiscal Year 2025/2026 Annual Special Tax Requirement		\$1,166,266.72

[1] Assumes the Fiscal Year 2024/2025 Year End delinquency rate of 0.28%.

B. Administrative Expense Budget

Each year a portion of the Annual Special Tax levy is used to pay for the administrative expenses incurred by the School District to levy the Annual Special Tax and administer the debt issued to finance Authorized Facilities. The estimated Fiscal Year 2025/2026 Administrative Expenses are shown in the table below.

Fiscal Year 2025/2026 Budgeted Administrative Expenses

Administrative Expense	Budget
District Staff and Expenses	\$9,614.77
Consultant/Trustee Expenses	9,000.00
County Tax Collection Fees	38.50
Contingency for Legal	5,000.00
Total Expenses	\$23,653.27

VI. Special Tax Classification

Each Fiscal Year, parcels within IA A of CFD No. 10 are assigned a Special Tax classification based on the parameters outlined in the RMA. This Section outlines how parcels are classified and the amount of Taxable Property within IA A of CFD No. 10.

A. Developed Property

Pursuant to the RMA, a parcel is considered to be classified as Developed Property once a Building Permit is issued on or prior to May 1st of the prior Fiscal Year. Building Permits have been issued for 393 Units by the City within IA A of CFD No. 10. According to the County Assessor, all property zoned for residential development within IA A of CFD No. 10 has been built and completed. As of the date of this Report, the 8 Units have prepaid their Special Tax obligation and are no longer considered taxable property and are no longer subject to the Special Tax. The table below summarizes the Special Tax classification for the Units within IA A of CFD No. 10.

**Fiscal Year 2025/2026
Special Tax Classification**

Initial Tax Year	Land Use	Number of Units
2001/2002	Developed Property	6
2002/2003	Developed Property	178
2003/2004	Developed Property	201
Total		385

VII. Fiscal Year 2025/2026 Special Tax Levy

Each Fiscal Year, the Special Tax is levied up to the Maximum Special Tax rate, as determined by the provisions of the RMA, in the amount needed to satisfy the Annual Special Tax Requirement.

Based on the Annual Special Tax Requirement listed in Section V, IA A of CFD No. 10 will levy at the applied Special Tax rate allowable for each parcel classified as Developed Property. The special tax roll, containing a listing of each parcel's applied Special Tax and Maximum Special Tax, calculated pursuant to the RMA, can be found attached as Exhibit G.

A summary of the Special Tax levy for Fiscal Year 2025/2026 by Special Tax classification as determined by the RMA for IA A of CFD No. 10 can be found in the table on the following page.

Fiscal Year 2025/2026 Annual Special Tax Levy

Tax Class/ Land Use	Sq. Footage	Number of Units/Acres	Assigned Annual Special Tax Rate	Total Assigned Annual Special Taxes
Zone 1				
1	≤ 3,000 Sq. Ft.	25 Units	\$3,315.60 per Unit	\$82,890.00
2	3,001 Sq. Ft. to 3,300 Sq. Ft.	0 Units	\$3,678.86 per Unit	0.00
3	> 3,300 Sq. Ft.	40 Units	\$4,042.12 per Unit	161,684.80
Developed Property		65 Units	NA	\$244,574.80
Undeveloped Property		0.00 Acres	\$0.00 per Acre	0.00
Zone 2				
4	≤ 2,400 Sq. Ft.	24 Units	\$2,225.82 per Unit	\$53,419.68
5	2,401 Sq. Ft. to 2,600 Sq. Ft.	18 Units	\$2,589.10 per Unit	46,603.80
6	2,601 Sq. Ft. to 2,800 Sq. Ft.	48 Units	\$2,831.26 per Unit	135,900.48
7	2,801 Sq. Ft. to 3,100 Sq. Ft.	57 Units	\$3,194.52 per Unit	182,087.64
8	3,101 Sq. Ft. to 3,400 Sq. Ft.	3 Units	\$3,436.68 per Unit	10,310.04
9	> 3,400 Sq. Ft.	105 Units	\$3,921.04 per Unit	411,709.20
Developed Property		255 Units	NA	\$840,030.84
Undeveloped Property		0.00 Acres	\$0.00 per Acre	0.00
Zone 3				
10	≤ 1,700 Sq. Ft.	14 Units	\$954.54 per Unit	\$13,363.56
11	1,701 Sq. Ft. to 1,850 Sq. Ft.	14 Units	\$1,075.64 per Unit	15,058.96
12	1,851 Sq. Ft. to 2,000 Sq. Ft.	0 Units	\$1317.80 per Unit	0.00
13	> 2,000 Sq. Ft.	37 Units	\$1,438.88 per Unit	53,238.56
Developed Property		65 Units	NA	\$81,661.08
Undeveloped Property		0.00 Acres	\$0.00 per Acre	0.00
Total		385 Units		\$1,166,266.72

https://calschools.sharepoint.com/cfs/unregulated/poway_unified/developer_revenue/cfd_admin/cfd_no_10_ia_a/fy_2025-26/poway_usd_cfd_10_ia_a_fy2025-26_specialtaxreport_d1.docx

Exhibit A

Rate and Method of Apportionment

April 10, 2001

**RATE AND METHOD OF APPORTIONMENT FOR
COMMUNITY FACILITIES DISTRICT NO. 10
OF THE POWAY UNIFIED SCHOOL DISTRICT
(IMPROVEMENT AREA A)**

An Annual Special Tax shall be levied on and collected in Improvement Area A ("IA A") of Community Facilities District No. 10 ("CFD No. 10") of the Poway Unified School District ("School District") in each Fiscal Year, in an amount determined through the application of the rate and method of apportionment described below. All of the real property in IA A of CFD No. 10, unless exempted by law or by the provisions hereof, shall be taxed for the purposes, to the extent, and in the manner herein provided.

**SECTION A
DEFINITIONS**

The terms hereinafter set forth have the following meanings:

"Acre" or "Acreage" means the land area of an Assessor's Parcel as shown on an Assessor's Parcel Map, or if the land area is not shown on an Assessor's Parcel Map, the land area shown on the applicable final map, parcel map, condominium plan, or other recorded County parcel map.

"Act" means the Mello-Roos Community Facilities Act of 1982 as amended, being Chapter 2.5, Division 2 of Title 5 of the Government Code of the State of California.

"Administrative Expenses" means any ordinary and necessary expenses of the School District to carry out its duties as the legislative body of IA A of CFD No. 10.

"Affordable Unit" means any Unit subject to deed restrictions, resale restrictions, and/or regulatory agreements recorded in favor of the City or County providing for affordable housing.

"Annual Special Tax" means the Special Tax levied in each Fiscal Year on an Assessor's Parcel as set forth in Section F. In each Fiscal Year Annual Special Tax revenues shall be used in the following order of priority: (i) to satisfy the Annual Special Tax Requirement and (ii) to pay for the acquisition, construction, rehabilitation, and improvement of School Facilities.

"Annual Special Tax Requirement" means the amount required in any Fiscal Year to pay: (i) the debt service on all Non-School Bonds or other indebtedness or other periodic costs on the Non-School Bonds, (ii) the Administrative Expenses of IA A of CFD No. 10, (iii) any costs associated with the release of funds from an escrow account, (iv) any amount required to establish or replenish any reserve funds established in association with the Non-School Bonds, less (v) any amounts on deposit in any fund or account which are available to pay for items (i) through (iv) above pursuant to any applicable fiscal agent agreement, bond indenture, or trust agreement.

"Assessor's Parcel" means a lot or parcel of land in IA A of CFD No. 10 which is designated on an Assessor's Parcel Map with an assigned Assessor's Parcel Number.

April 10, 2001

"**Assessor ' s Parcel Map**" means an official map of the Assessor of the County designating parcels by Assessor ' s Parcel Number.

"**Assessor ' s Parcel Number**" means that number assigned to an Assessor ' s Parcel by the County Assessor for purposes of identification.

"**Assigned Annual Special Tax**" means the Special Tax of that name as set forth in Section D.

"**Assistant Superintendent**" means the Assistant Superintendent of Business of the School District or his/her designee.

"**Attached Unit**" means a Unit that (i) consists or shall consist of a building or buildings in which each of the individual Units has at least one common wall with another Unit and (ii) is not an Affordable Unit or a Senior Citizen Unit.

"**Backup Annual Special Tax**" means the Special Tax of that name described in Section E below.

"**Board**" means the Board of Education of the School District or its designee.

"**Bonds**" means any obligation to repay a sum of money, including obligations in the form of bonds, notes, certificates of participation, long-term leases, loans from government agencies, or loans from banks, other financial institutions, private businesses, or individuals, or long-term contracts, or any refunding thereof, to the repayment of which Special Taxes of IA A of CFD No. 10 are pledged.

"**Building Square Footage**" or "**BSF**" means the square footage of internal living space of a Unit, exclusive of garages or other structures not used as living space, as determined by reference to the building permit application for such Unit or other applicable records of the City.

"**Calendar Year**" means any period beginning January 1 and ending December 31.

"**City**" means the City of San Diego.

"**County**" means the County of San Diego.

"**Detached Unit**" means a Unit which is not an Attached Unit, an Affordable Unit, or a Senior Citizen Unit.

"**Developed Property**" means all Assessor's Parcels for which building permits for the construction of Units were issued on or before May 1 of the prior Fiscal Year, provided that such Assessor's Parcels were created on or before January 1 of the prior Fiscal Year and that each such Assessor's Parcel is associated with a Lot, as determined reasonably by the Assistant Superintendent.

"**Exempt Property**" means the property designated as Exempt Property in Section J.

April 10, 2001

"Final Subdivision Map" means a final tract map, parcel map, lot line adjustment, or functionally equivalent map or instrument that creates building sites, recorded in the County Office of the Recorder.

"Fiscal Year" means the period commencing on July 1 of any year and ending the following June 30.

"Gross Floor Area" or "GFA" means the covered and enclosed space within the perimeters of a commercial or industrial structure, not including any storage area incidental to the principal use of the development, garage, parking structure, unenclosed walkway, or utility or disposable area, as used in Section 65995 of the Government Code.

"Gross Prepayment Amount" means any amount determined by reference to Table 3 and adjusted as set forth in Section G.

"Lot" means an individual legal lot created by a Final Subdivision Map for which a building permit for a Unit has been or could be issued, provided that land for which one or more building permits have been or could be issued for the construction of one or more model Units shall not be construed as a Lot until such land has been subdivided by a Final Subdivision Map.

"Minimum Taxable Acreage" means, for any Zone, the applicable acreage listed in Table 4 below.

"Non-School Bonds" means any Bonds which are not School Bonds.

"Partial Prepayment Amount" means the dollar amount required to prepay a portion of the Annual Special Tax obligation on any Assessor 's Parcel, determined pursuant to Section H.

"Prepayment Amount" means the dollar amount required to prepay all of the Annual Special Tax obligation on any Assessor 's Parcel, determined pursuant to Sections G.

"Proportionately" means that the ratio of the actual Annual Special Tax levy to the applicable Special Tax is equal for all applicable Assessor 's Parcels.

"School Bonds" means any Bonds allocable to proceeds used or to be used to fund the acquisition, construction, rehabilitation, or improvement of School Facilities.

"School Facilities" means any public facilities owned or to be owned by the School District.

"Senior Citizen Unit" means a Unit designated as senior citizen housing, part of a residential care facility for the elderly, or part of a multi-level care facility for the elderly as referred to in California Government Code Section 65995.1. For purposes hereof, it shall be sufficient to designate a Unit as a Senior Citizen Unit if Senior Citizen Restrictions have been affected with respect to such Unit.

April 10, 2001

"Senior Citizen Restriction" means (i) a restriction limiting the use of Units to senior citizen housing under a specific plan, a final map or other governmental entitlements, or a declaration of covenants, conditions and restrictions or any similar recorded instrument or (ii) licensing from appropriate agencies received for residential care facilities for the elderly or multi-level care facilities as those terms are defined in Health and Safety Code Section 1569.2 and Government Code Section 15432(d)(9), respectively.

"Special Tax" means any of the special taxes authorized to be levied in IA A of CFD No. 10 under the Act.

"Taxable Developed Property" means all Assessor's Parcels of Developed Property which are not Exempt Property.

"Taxable Property" means all Assessor's Parcels which are not Exempt Property.

"Taxable Undeveloped Property" means all Assessor 's Parcels of Undeveloped Property which are not Exempt Property.

"Undeveloped Property" means all Assessor 's Parcels which are not Developed Property.

"Unit" means each separate residential dwelling unit which comprises an independent facility capable of conveyance separate from adjacent residential dwelling units. Each Unit shall be classified as an Affordable Unit, an Attached Unit, a Detached Unit, or a Senior Citizen Unit.

"Zone" means any of the areas identified as a Zone in Exhibit A to this Rate and Method of Apportionment.

"Zone 1" means all property located within the area identified as Zone 1 in Exhibit A to this Rate and Method of Apportionment.

"Zone 2" means all property located within the area identified as Zone 2 in Exhibit A to this Rate and Method of Apportionment.

"Zone 3" means all property located within the area identified as Zone 3 in Exhibit A to this Rate and Method of Apportionment.

SECTION B ASSIGNMENT OF ASSESSOR'S PARCELS

For each Fiscal Year, beginning with Fiscal Year 2001-02, (i) each Assessor's Parcel shall be classified as Developed Property or Undeveloped Property; (ii) each Assessor's Parcel of Developed Property shall be classified as Taxable Developed Property or Exempt Property; (iii) each Assessor's Parcel of Undeveloped Property shall be classified as Taxable Undeveloped Property or Exempt Property; and (iv) each Assessor's Parcel shall be assigned to a Zone in accordance with Exhibit A.

**SECTION C
MAXIMUM SPECIAL TAX**

1. Taxable Developed Property

The Maximum Special Tax for each Assessor 's Parcel classified as Taxable Developed Property in any Fiscal Year shall be the greater of (i) the Assigned Annual Special Tax or (ii) the Backup Annual Special Tax.

2. Taxable Undeveloped Property

The Maximum Special Tax for any Assessor 's Parcel classified as Taxable Undeveloped Property in any Fiscal Year shall be the Assigned Annual Special Tax.

**SECTION D
ASSIGNED ANNUAL SPECIAL TAXES**

1. Taxable Developed Property

The Assigned Annual Special Tax for each Assessor 's Parcel of Taxable Developed Property in Fiscal Year 2001-02 shall be the amount determined by reference to Table 1 below. No Assigned Annual Special Tax shall apply to Affordable Units or Senior Citizen Units.

TABLE 1

ASSIGNED ANNUAL SPECIAL TAX FOR TAXABLE DEVELOPED PROPERTY FOR FISCAL YEAR 2001-02		
Zone	Building Square Feet	Assigned Annual Special Tax ¹
1	< = 3,000	\$2,061.39 per Detached/Attached Unit
1	3,001 - 3,300	\$2,287.23 per Detached/Attached Unit
1	> 3,300	\$2,513.08 per Detached/Attached Unit
2	< = 2,400	\$1,383.85 per Detached/Attached Unit
2	2,401 - 2,600	\$1,609.70 per Detached/Attached Unit
2	2,601 - 2,800	\$1,760.26 per Detached/Attached Unit
2	2,801 - 3,100	\$1,986.11 per Detached/Attached Unit
2	3,101 - 3,400	\$2,136.67 per Detached/Attached Unit
2	> 3,400	\$2,437.80 per Detached/Attached Unit
3	< = 1,700	\$593.47 per Detached/Attached Unit
3	1,701 - 1,850	\$668.75 per Detached/Attached Unit
3	1,851 - 2,000	\$819.31 per Detached/Attached Unit
3	> 2,000	\$894.59 per Detached/Attached Unit
1. No Assigned Annual Special Tax shall apply to Affordable Units or Senior Citizen Units.		

Each July 1, commencing July 1, 2002, the Assigned Annual Special Tax for each Assessor=s Parcel of Taxable Developed Property shall be increased by two percent (2.00%) of the amount in effect in the prior Fiscal Year.

2. Taxable Undeveloped Property

The Assigned Annual Special Tax for an Assessor's Parcel of Taxable Undeveloped Property in Fiscal Year 2001-02 shall be the amount determined by reference to Table 2.

TABLE 2

<i>ASSIGNED ANNUAL SPECIAL TAX FOR TAXABLE UNDEVELOPED PROPERTY FOR FISCAL YEAR 2001-02</i>	
Zone	Assigned Annual Special Tax
Zone 1	\$10,027.10 per Acre
Zone 2	\$16,354.07 per Acre
Zone 3	\$5,786.40 per Acre

On each July 1, commencing July 1, 2002, the Assigned Annual Special Tax per Acre for each Zone shall be increased by two percent (2.00%) of the amount in effect in the prior Fiscal Year.

**SECTION E
BACKUP ANNUAL SPECIAL TAX**

Each Fiscal Year, each Assessor's Parcel of Taxable Developed Property shall be subject to a Backup Annual Special Tax. In each Fiscal Year, the Backup Annual Special Tax rate for Taxable Developed Property shall be the rate per Lot calculated according to the following formula:

$$B = (Z H A) L$$

The terms above have the following meanings:

- B = Backup Annual Special Tax per Lot for the applicable Fiscal Year
- Z = Assigned Annual Special Tax per Acre of Taxable Undeveloped Property for the applicable Zone for the applicable Fiscal Year
- A = Acreage of Taxable Developed Property expected to exist in the applicable Final Subdivision Map at buildout, as determined by the Assistant Superintendent pursuant to Section J
- L = Lots in the Final Subdivision Map

April 10, 2001

Notwithstanding the foregoing, if all or any portion of the Final Subdivision Map(s) described in the preceding paragraph is subsequently changed or modified, then the Backup Annual Special Tax for each Assessor's Parcel of Developed Property in such Final Subdivision Map area that is changed or modified shall be a rate per square foot of Acreage calculated as follows:

1. Determine the total Backup Annual Special Taxes anticipated to apply to the changed or modified Final Subdivision Map area prior to the change or modification.
2. The result of paragraph 1 above shall be divided by the Acreage of Taxable Property which is ultimately expected to exist in such changed or modified Final Subdivision Map area, as reasonably determined by the Board.
3. The result of paragraph 2 above shall be divided by 43,560. The result is the Backup Annual Special Tax per square foot of Acreage which shall be applicable to Assessor's Parcels of Developed Property in such changed or modified Final Subdivision Map area for all remaining Fiscal Years in which the Special Tax may be levied.

SECTION F

METHOD OF APPORTIONMENT OF THE ANNUAL SPECIAL TAX

Commencing Fiscal Year 2001-02 and for each subsequent Fiscal Year, the Assistant Superintendent shall determine the Annual Special Tax Requirement to be collected in IA A of CFD No. 10 in such Fiscal Year. The Annual Special Tax shall be levied as follows:

First: The Annual Special Tax shall be levied on each Assessor's Parcel of Taxable Developed Property at the Assigned Annual Special Tax applicable to such Assessor's Parcel.

Second: If the sum of the amounts levied on Assessor's Parcels in the first step above is less than the Annual Special Tax Requirement, then the Annual Special Tax shall be levied Proportionately on each Assessor's Parcel of Taxable Undeveloped Property up to the Assigned Annual Special Tax applicable to such Assessor's Parcel to satisfy the Annual Special Tax Requirement.

Third: If the sum of the amounts levied on Assessor's Parcels in the first and second steps above is less than the Annual Special Tax Requirement, then the Annual Special Tax on each Assessor's Parcel of Taxable Developed Property whose Maximum Special Tax is the Backup Annual Special Tax shall be increased Proportionately from the Assigned Annual Special Tax up to the Backup Annual Special Tax to satisfy the Annual Special Tax Requirement.

**SECTION G
PREPAYMENT OF ANNUAL SPECIAL TAX**

The Annual Special Tax obligation of an Assessor's Parcel of Taxable Developed Property or an Assessor's Parcel of Taxable Undeveloped Property for which a building permit has been issued may be prepaid in full, provided that there are no delinquent Special Taxes, penalties, or interest charges outstanding with respect to such Assessor's Parcel at the time the Annual Special Tax obligation would be prepaid. The Prepayment Amount for an Assessor's Parcel eligible for prepayment shall be determined as described below.

1. Prior to Issuance of Non-School Bonds

Prior to the issuance of Non-School Bonds, the Prepayment Amount for each Assessor's Parcel of Developed Property and each Assessor's Parcel of Undeveloped Property for which a building permit has been issued shall be the amount equal to the Gross Prepayment Amount. The Gross Prepayment Amount for the period May 1, 2001 to April 30, 2002 shall be the amount determined by reference to Table 3.

TABLE 3

<i>GROSS PREPAYMENT AMOUNT FOR MAY 1, 2001 TO APRIL 30, 2002</i>		
Zone	Building Square Feet	Assigned Annual Special Tax ¹
1	< = 3,000	\$22,830.62 per Detached/Attached Unit
1	3,001 - 3,300	\$25,331.95 per Detached/Attached Unit
1	> 3,300	\$27,833.27 per Detached/Attached Unit
2	< = 2,400	\$19,508.20 per Detached/Attached Unit
2	2,401 - 2,600	\$19,508.20 per Detached/Attached Unit
2	2,601 - 2,800	\$19,508.20 per Detached/Attached Unit
2	2,801 - 3,100	\$21,996.84 per Detached/Attached Unit
2	3,101 - 3,400	\$23,664.40 per Detached/Attached Unit
2	> 3,400	\$26,999.50 per Detached/Attached Unit
3	< = 1,700	\$19,508.20 per Detached/Attached Unit
3	1,701 - 1,850	\$19,508.20 per Detached/Attached Unit
3	1,851 - 2,000	\$19,508.20 per Detached/Attached Unit
3	> 2,000	\$19,508.20 per Detached/Attached Unit

1. No Assigned Annual Special Tax shall apply to Affordable Units or Senior Citizen Units.

April 10, 2001

On each May 1, commencing May 1, 2002, the Gross Prepayment Amount for each Unit shall be increased by two percent (2.00%) of the amount in effect in the prior Fiscal Year, provided that the Gross Prepayment Amount applicable to a Unit shall not increase after the issuance of the building permit for such Unit.

2. Subsequent to Issuance of Non-School Bonds

Subsequent to the issuance of Non-School Bonds, the Prepayment Amount for each applicable Assessor's Parcel shall be calculated according to the following formula (capitalized terms defined below):

	Bond Redemption Amount
plus	Redemption Premium
plus	Defeasance
plus	Administrative Fee
less	<u>Reserve Fund Credit</u>
equals	Prepayment Amount

As of the date of prepayment, the Prepayment Amount shall be calculated as follows:

1. For each Assessor's Parcel of Taxable Developed Property, compute the Assigned Annual Special Tax and the Backup Annual Special Tax. For each Assessor's Parcel of Taxable Undeveloped Property, compute the Assigned Annual Special Tax and the Backup Annual Special Tax applicable to the Assessor's Parcel as though it was already designated as Taxable Developed Property, based upon the building permit issued for that Assessor's Parcel.
2. For each Annual Special Tax obligation to be prepaid, (a) divide the Assigned Annual Special Tax computed pursuant to paragraph 1 for such Assessor's Parcel by the estimated Assigned Annual Special Tax applicable to all Assessor's Parcels of Taxable Developed Property at buildout, as reasonably determined by the Assistant Superintendent, and (b) divide the Backup Annual Special Tax computed pursuant to paragraph 1 for such Assessor's Parcel by the estimated Backup Annual Special Tax applicable to all Assessor's Parcels of Taxable Developed Property at buildout, as reasonably determined by the Assistant Superintendent.
3. Multiply the larger quotient computed pursuant to paragraph 2(a) or 2(b) by the face value of all outstanding Non-School Bonds. The product is the "Bond Redemption Amount."

April 10, 2001

4. Multiply the Bond Redemption Amount by the applicable redemption premium, if any, on the outstanding Non-School Bonds to be redeemed with the proceeds of the Bond Redemption Amount. This product is the "Redemption Premium."
5. Compute the amount needed to pay interest on the Bond Redemption Amount, the Redemption Premium, and the Reserve Fund Credit (see step 9) to be redeemed with the proceeds of the Prepayment Amount until the earliest call date for the outstanding Non-School Bonds.
6. Estimate the amount of interest earnings to be derived from the reinvestment of the Bond Redemption Amount plus the Redemption Premium until the earliest call date for the outstanding Non-School Bonds.
7. Subtract the amount computed pursuant to paragraph 6 from the amount computed pursuant to paragraph 5. This difference is the "Defeasance."
8. Estimate the administrative fees and expenses associated with the prepayment, including the costs of computation of the Prepayment Amount, the costs of redeeming Non-School Bonds, and the costs of recording any notices to evidence the prepayment and the redemption. This amount is the "Administrative Fee."
9. Calculate the "Reserve Fund Credit" as the lesser of: (a) the expected reduction in the applicable reserve requirements, if any, associated with the redemption of outstanding Non-School Bonds as a result of the prepayment, or (b) the amount derived by subtracting the new reserve requirements in effect after the redemption of outstanding Non-School Bonds as a result of the prepayment from the balance in the applicable reserve funds on the prepayment date. Notwithstanding the foregoing, if the reserve fund requirement is satisfied by a surety bond or other instrument at the time of the prepayment, then no Reserve Fund Credit shall be given. Notwithstanding the foregoing, the Reserve Fund Credit shall in no event be less than 0.
10. The Prepayment Amount is equal to the sum of the Bond Redemption Amount, the Redemption Premium, the Defeasance, and the Administrative Fee, less the Reserve Fund Credit.

With respect to an Annual Special Tax obligation that is prepaid pursuant to this Section G, the Assistant Superintendent shall indicate in the records of IA A of CFD No. 10 that there has been a prepayment of the Annual Special Tax obligation and shall cause a suitable notice to be recorded in compliance with the Act within thirty (30) days of receipt of such prepayment to indicate the prepayment of the Annual Special Tax obligation and the release of the Annual Special Tax lien on such Assessor's Parcel, and the obligation of such Assessor's Parcel to pay such Annual Special Tax shall cease.

Notwithstanding the foregoing, no prepayment will be allowed unless the amount of Annual Special Tax that may be levied in IA A of CFD No. 10, net of an allocable portion of Administrative Expenses, shall be at least 1.1 times the regularly scheduled annual interest and principal payments on all currently outstanding Non-School Bonds in each future Fiscal Year, as reasonably determined by the Assistant Superintendent.

SECTION H PARTIAL PREPAYMENT OF SPECIAL TAX

Prior to the issuance of a building permit for the construction of a production Unit on a Lot within a Final Subdivision Map area, the owner of no less than the entire Final Subdivision Map area may elect to prepay any portion of the applicable Annual Special Tax obligations for all of the Assessor=s Parcels within such Final Subdivision Map area. In order to prepay any portion of the applicable Annual Special Tax obligations, the residential Final Subdivision Map area must contain at least 25 Detached Units or 50 Attached Units. The partial prepayment of each Annual Special Tax obligation shall be collected at the issuance of each applicable building permit, provided that the Annual Special Tax obligations with respect to model Units for which building permits have already been issued must be partially prepaid at the time of the election. The Partial Prepayment Amount shall be calculated according to the following formula:

$$PP = P_G H F$$

These terms have the following meanings:

PP = the Partial Prepayment Amount

P_G = the Prepayment Amount calculated according to Section G

F = the percent by which the owner of the Assessor=s Parcel is partially prepaying the Annual Special Tax obligation.

The owner of any Assessor=s Parcel who desires such partial prepayment shall notify the Assistant Superintendent of (i) such owner=s intent to partially prepay the Annual Special Tax obligation and (ii) the percentage by which the Annual Special Tax obligation shall be prepaid.

With respect to any Assessor=s Parcel's Annual Special Tax obligation that is partially prepaid, the Assistant Superintendent shall indicate in the records of IA A of CFD No. 10 that there has been a partial prepayment of the Annual Special Tax obligation and shall cause a suitable notice to be recorded in compliance with the Act within thirty (30) days of receipt of such partial prepayment, to indicate the partial prepayment of Annual Special Tax obligation and the partial release of the Annual Special Tax lien on such Assessor=s Parcel, and the obligation of such Assessor=s Parcel to pay such prepaid portion of the Annual Special Tax shall cease. The portion of the Annual Special Tax with respect to any Assessor=s Parcel, equal to the outstanding percentage (1.00 - F) of the remaining Annual Special Tax, shall continue to be levied on such Assessor=s Parcel.

April 10, 2001

Notwithstanding the foregoing, no partial prepayment will be allowed unless the amount of Annual Special Tax that may be levied in IA A of CFD No. 10, net of an allocable portion of Administrative Expenses, shall be at least 1.1 times the regularly scheduled annual interest and principal payments on all currently outstanding Non-School Bonds in each future Fiscal Year, as reasonably determined by the Assistant Superintendent.

**SECTION I
TERMINATION OF SPECIAL TAX**

The Annual Special Tax shall be levied for a term of thirty-four (34) Fiscal Years after the issuance of Non-School Bonds by IA A of CFD No. 10, but in no event shall the Annual Special Tax be levied later than Fiscal Year 2045-46.

**SECTION J
EXEMPTIONS**

The Assistant Superintendent shall classify as Exempt Property (i) Assessor=s Parcels owned by the State of California, Federal or other local governments, (ii) Assessor=s Parcels which are used as places of worship and are exempt from *ad valorem* property taxes because they are owned by a religious organization, (iii) Assessor=s Parcels used exclusively by a homeowners' association, (iv) Assessor=s Parcels with public or utility easements or other restrictions making impractical their utilization for other than the purposes set forth in the easement or the restriction, (v) Assessor's Parcels for which building permits were issued on or before May 1 of the prior Fiscal Year for the construction of Affordable Units and/or Senior Citizen Units exclusively, (vi) Assessor's Parcels for which building permits were issued on or before May 1 of the prior Fiscal Year for the construction of GFA and Assessor's Parcels which directly service such Assessor's Parcels, such as parking lots, as reasonably determined by the Assistant Superintendent, and (vii) other types of Assessor's Parcels, at the reasonable discretion of the Assistant Superintendent, provided that no such classification would reduce the Acreage of all Taxable Property in any Zone to less than the Minimum Taxable Acreage for such Zone. Assessor's Parcels which cannot be classified as Exempt Property because such classification would reduce the Acreage of all Taxable Property in a Zone to less than the Minimum Taxable Acreage for such Zone will continue to be classified as Taxable Developed Property or Taxable Undeveloped Property, as applicable, and will continue to be subject to Special Taxes accordingly.

TABLE 4

<i>MINIMUM TAXABLE ACREAGE</i>	
Zone	Minimum Taxable Acreage
Zone 1	15.10
Zone 2	27.14
Zone 3	8.54

April 10, 2001

SECTION K APPEALS

Any property owner claiming that the amount or application of any Special Tax is not correct may file a written notice of appeal with the Assistant Superintendent not later than twelve (12) months after having paid the Special Tax that is disputed. The Assistant Superintendent shall promptly review the appeal, and if necessary, meet with the property owner, consider written and oral evidence regarding the amount of the Special Tax, and rule on the appeal. If the Assistant Superintendent's decision requires that the Special Tax for an Assessor=s Parcel be modified or changed in favor of the property owner, a cash refund shall not be made (except for the last year of levy or in other special cases, as determined by the Assistant Superintendent), but an adjustment shall be made to the Special Tax on that Assessor=s Parcel in the subsequent Fiscal Year(s).

SECTION L MANNER OF COLLECTION

The Annual Special Tax shall be collected in the same manner and at the same time as ordinary *ad valorem* property taxes, provided, however, that IA A of CFD No. 10 may collect Annual Special Taxes at a different time or in a different manner if necessary to meet its financial obligations.

J:\CLIENTS\POWAY.USD\SUBAREA4\RESTRUCTURE\IAA_RM5.DOC

Exhibit B

CFD Boundary Map

PROPOSED BOUNDARIES OF POWAY UNIFIED SCHOOL DISTRICT COMMUNITY FACILITIES DISTRICT NO. 10 SAN DIEGO COUNTY STATE OF CALIFORNIA

(1) Filed in the office of the Secretary to the Board of Education this 16th day of April, 2001.

John R. Cole
Secretary of the Board of Education

(2) I hereby certify that the within map showing the proposed boundaries of Community Facilities District No. 10, San Diego County, State of California, was approved by the Board of Education at a regular meeting thereof, held on this 16th day of April, 2001, by its Resolution No. 42-2001.

John R. Cole
Secretary of the Board of Education

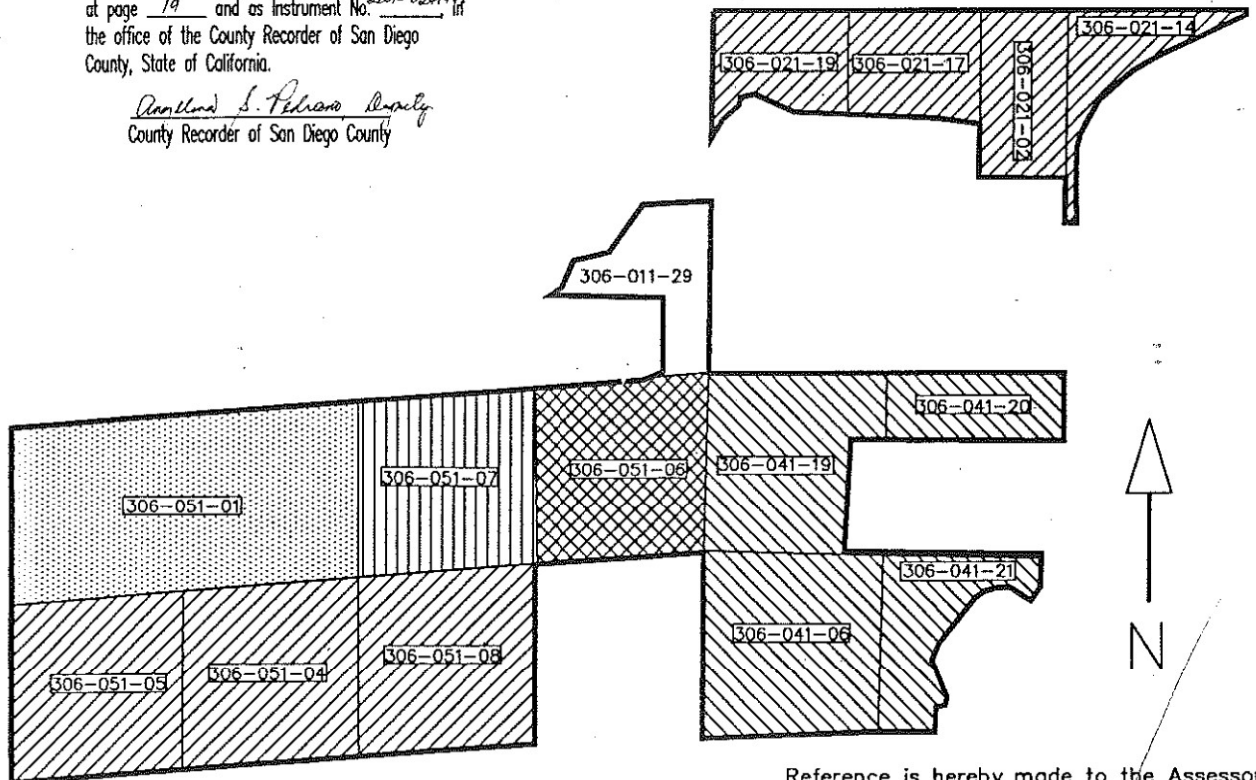
(3) Filed this 19th day of APRIL, 2001, at the hour of 10:25 o'clock A.M., in Book 35 of Maps of Assessment and Community Facilities Districts at page 19 and as instrument No. 2001-024148 in the office of the County Recorder of San Diego County, State of California.

David L. Peterson Deputy
County Recorder of San Diego County

LEGEND

	CFD Boundary
	Assessor Parcel Boundary
nnn- nnn -nn	Assessor Parcel Number
	Improvement Area A
	Improvement Area B
	Improvement Area C
	Improvement Area D
	Improvement Area E
	Improvement Area F

Confirmed Copy



Reference is hereby made to the Assessor maps of the County of San Diego for an exact description of the lines and dimensions of each lot and parcel.

PREPARED BY
DAVID TAUSSIG & ASSOCIATES, INC.

BK 35 PG 19

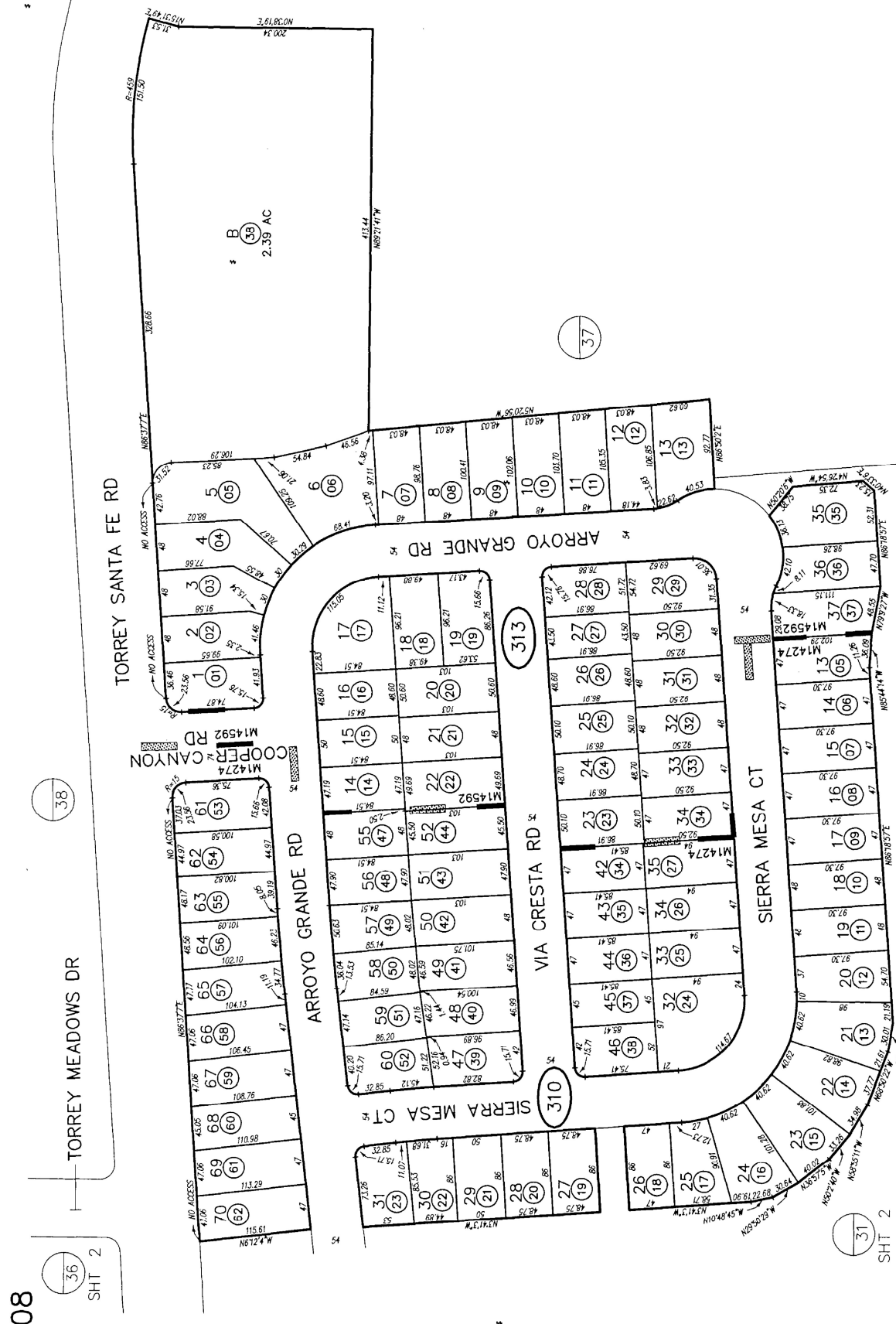
2001-024148

Exhibit C

Assessor's Parcel Maps

San Diego County Assessor's Map
 306-31
 SHT 1 OF 3
 1" = 100'
 11/03/03 MGS ϕ
 Date: 10/15/03 By: JAG From: SB-651

BLK	PROP APN	NEW APN	PR	QUIT NO
310	01 THRU 02	02	124	
	07 &	63 & 64	02	1686
	63 & 64	65	03	1491
	65	66 & 67	04	1466
311	310-THRU-311	01 THRU 36	04	54
	312-THRU-313	37, 38, 39		
	41, 42, 43, 44, 45, 46, 47			

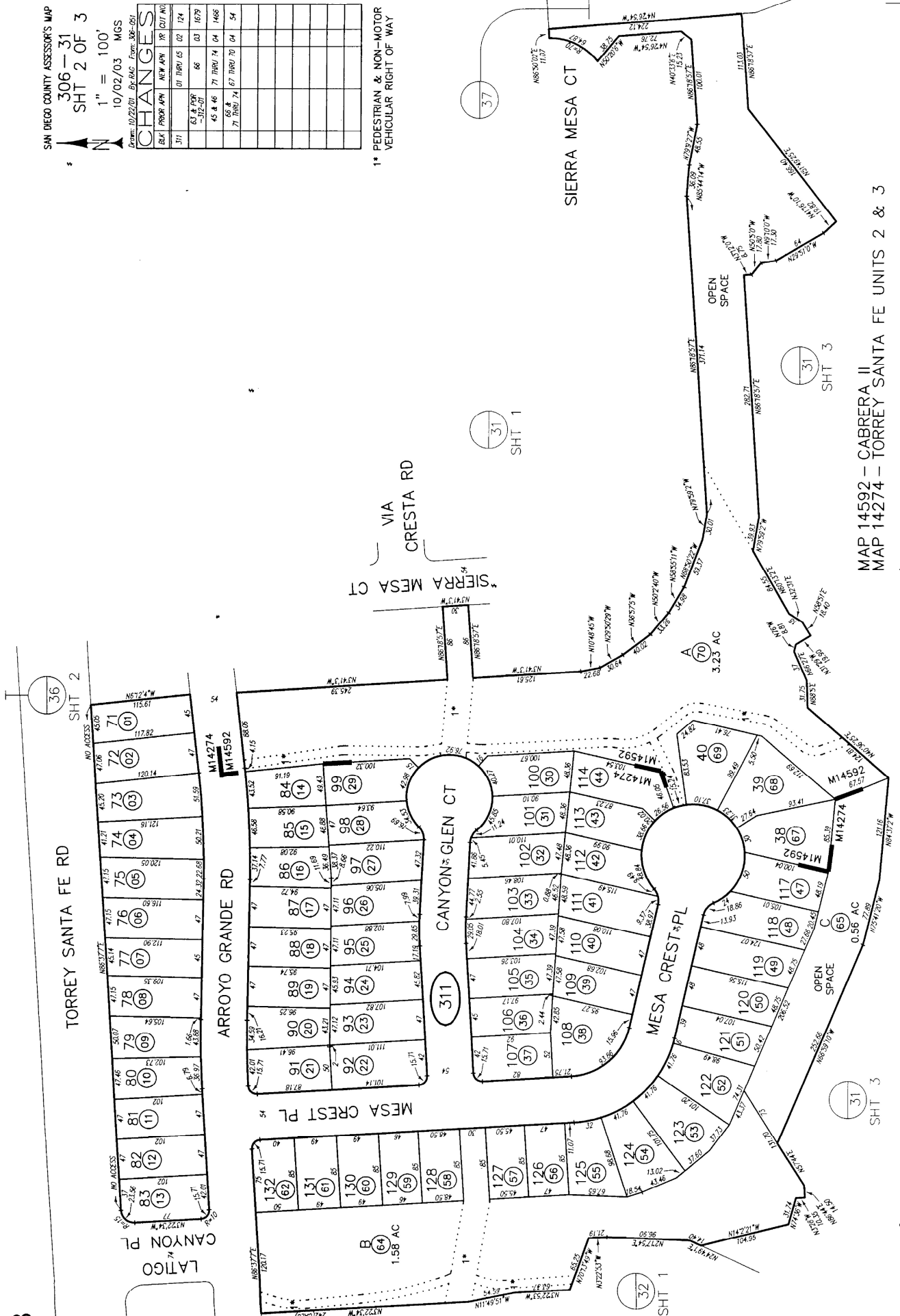


MAP 14592 - CABRERA II
 MAP 14274 - TORREY SANTA FE UNITS 2 & 3

SAN DIEGO COUNTY ASSESSOR'S MAP
 306-31
 SHT 2 OF 3
 1" = 100'
 10/02/03 MGS
 Drawn: 10/22/01 By: PAC From: 306-001
CHANGES

BLK	PROJ	APP	NEW	APP	TR	OUT	NO
301			01	THRU	02	124	
			03	THRU	04	1679	
			05	THRU	06	1468	
			07	THRU	08	54	

1* PEDESTRIAN & NON-MOTOR VEHICULAR RIGHT OF WAY



MAP 14592 - CABRERA II
 MAP 14274 - TORREY SANTA FE UNITS 2 & 3



1" = 100'

10/02/03 MGS

Drawn: 10/22/01 By: PAC From: 306-001

CHANGES

BLK	PROJ	APP	NEW	APP	TR	OUT	NO
301			01	THRU	02	124	
			03	THRU	04	1679	
			05	THRU	06	1468	
			07	THRU	08	54	

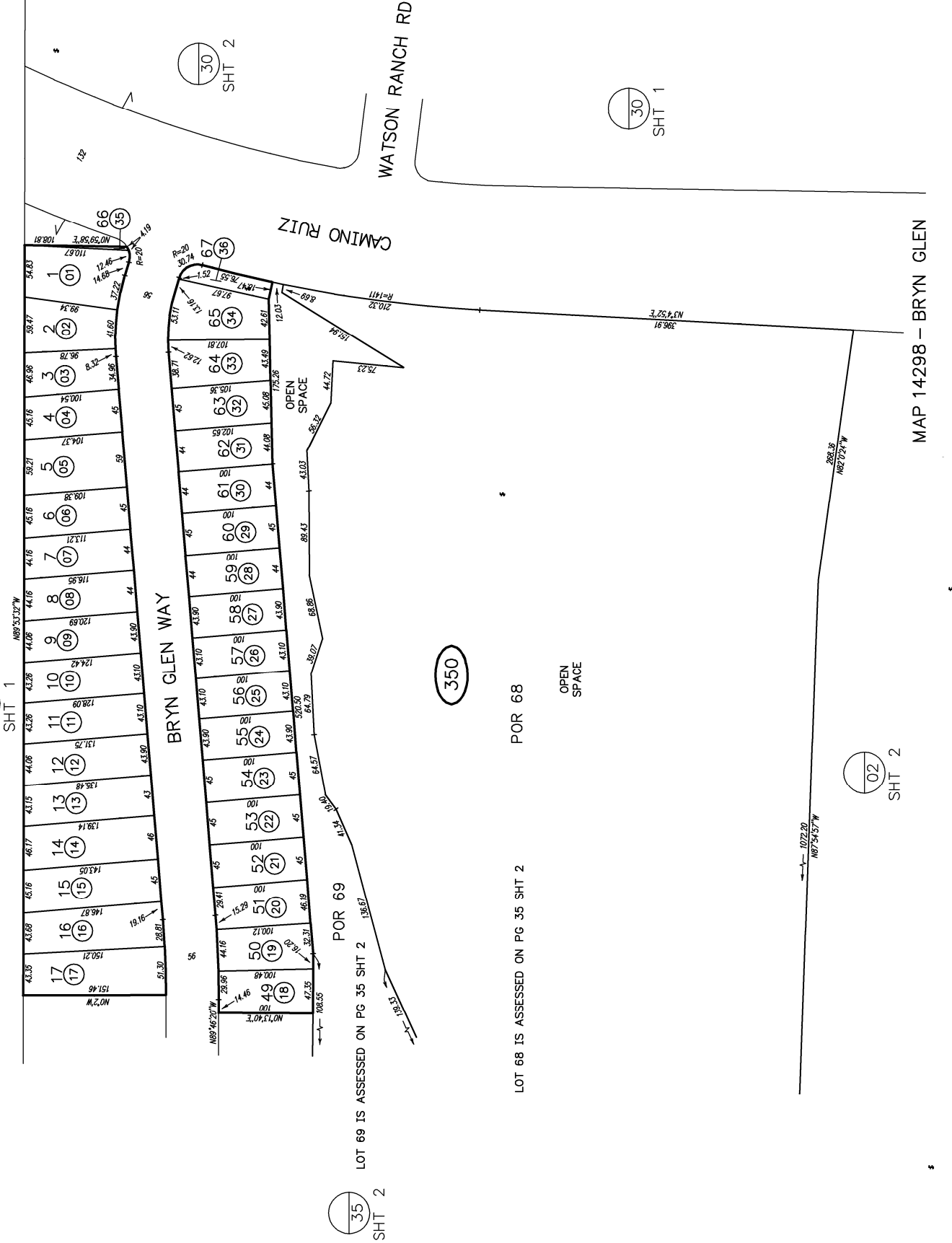
1* PEDESTRIAN & NON-MOTOR VEHICULAR RIGHT OF WAY

SAN DIEGO COUNTY ASSESSOR'S MAP
 306-35
 SHT 1 OF 2
 1" = 100'

Down: 12/05/01 Br-K From: 3/9-02

BLK	PRIOR APN	NEW APN	YR	OUT NO
350	1	THRU 36	02	148

CHANGES



02
SHT 1

35
SHT 2

350

LOT 68 IS ASSESSED ON PG 35 SHT 2

POR 68

OPEN SPACE

LOT 69 IS ASSESSED ON PG 35 SHT 2

POR 69

02
SHT 2

MAP 14298 - BRYN GLEN

WATSON RANCH RD

CAMINO RUIZ

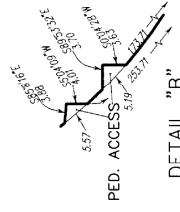
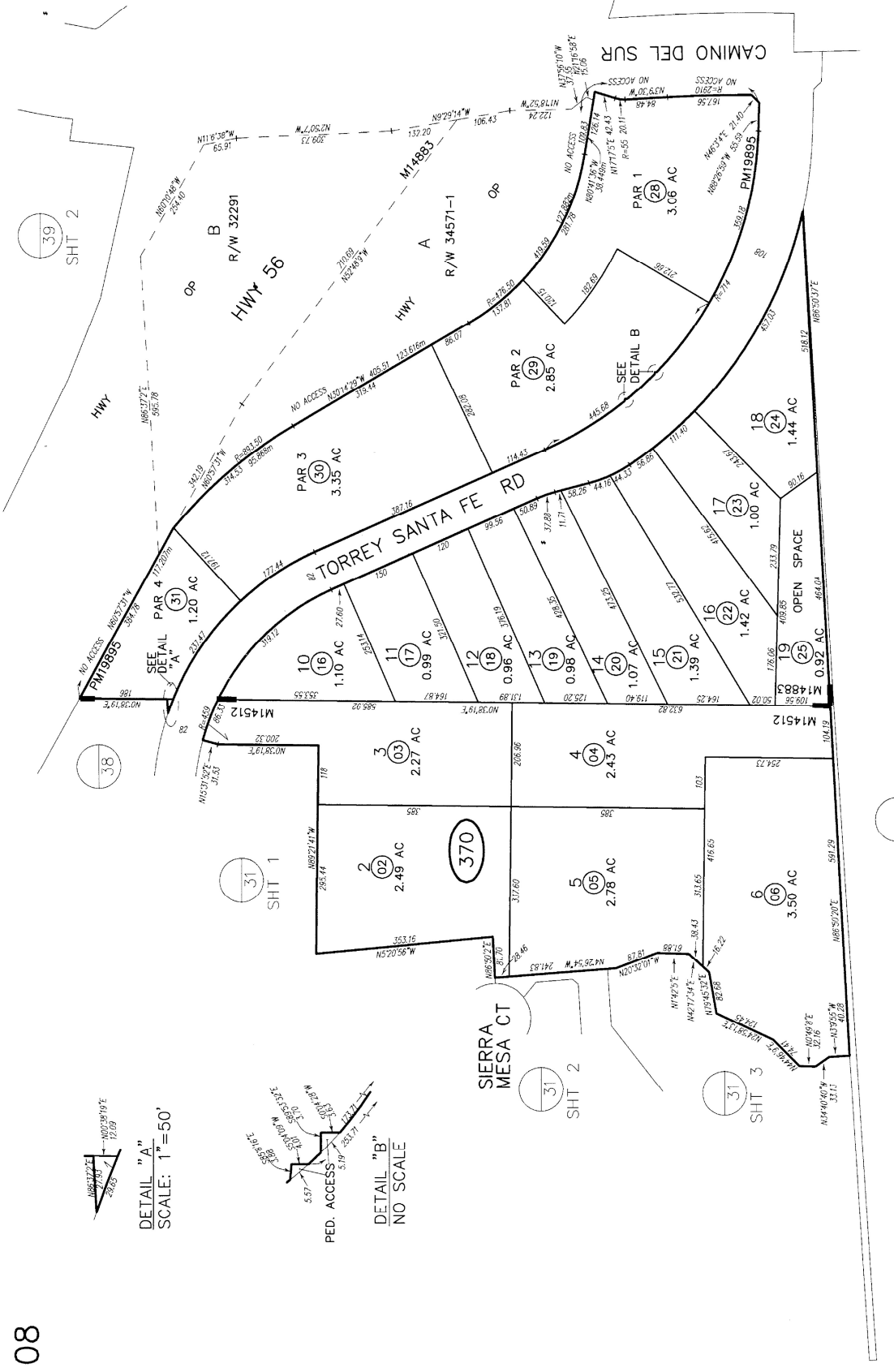
BRYN GLEN WAY

30
SHT 2

30
SHT 1

1" = 200'
11/20/2014 JGD
From: 01/11/03 to: 04/05/14 From: 306-081

BLK	PROJ	APN	NEW APN	NR	COIT	NO
370	01	THRU 6	03	165		
		FOR FC	04	54		
		31,301,728				
		22,42,28	05	153		
		FOR FC				
07	THRU 15	28	THRU 31	06	2084	
		29				
		26				
		27				



MAP 14883 — TORREY HIGHLANDS EMPLOYMENT CENTER
MAP 14512 — TORREY SANTA FE SUMMIT
ROS 18589, 20449

Exhibit D

Special Tax Refunding Bonds, Series 2017

Debt Service Schedule

Poway Unified School District
Improvement Area A of Community Facilities District No. 10
Series 2017 Special Tax Refunding Bonds
Debt Service Schedule

Period Ending	Series 2017 Special Tax Refunding Bonds		Semi-Annual Debt Service Payment	Annual Debt Service Payment
	Principal	Interest		
3/1/2025	\$0.00	\$99,000.00	\$99,000.00	693,000.00
9/1/2025	495,000.00	99,000.00	594,000.00	
3/1/2026	0.00	86,625.00	86,625.00	718,250.00
9/1/2026	545,000.00	86,625.00	631,625.00	
3/1/2027	0.00	73,000.00	73,000.00	721,000.00
9/1/2027	575,000.00	73,000.00	648,000.00	
3/1/2028	0.00	58,625.00	58,625.00	732,250.00
9/1/2028	615,000.00	58,625.00	673,625.00	
3/1/2029	0.00	43,250.00	43,250.00	721,500.00
9/1/2029	635,000.00	43,250.00	678,250.00	
3/1/2030	0.00	27,375.00	27,375.00	709,750.00
9/1/2030	655,000.00	27,375.00	682,375.00	
3/1/2031	0.00	11,000.00	11,000.00	462,000.00
9/1/2031	440,000.00	11,000.00	451,000.00	
Total	\$3,960,000.00	\$797,750.00	\$4,757,750.00	\$4,757,750.00

Exhibit E

Delinquent Annual Special Tax Report



Fixed Charge Special Assessment Delinquency Report

Year End Report for Fiscal Year 2024/2025

Improvement Area A of Poway Unified School District Community Facilities District No. 10



Summary

Year End

Total Taxes Due June 30, 2025	\$1,143,398.60
Amount Paid	\$1,140,250.85
Amount Remaining to be Collected	\$3,147.75
Number of Parcels Delinquent	3
Delinquency Rate	0.28%

Foreclosure

CFD Subject to Foreclosure Covenant:	Yes
Foreclosure Notification Date	June 1st
Foreclosure Determination Date	July 16th
Foreclosure Commencement Date	August 30th

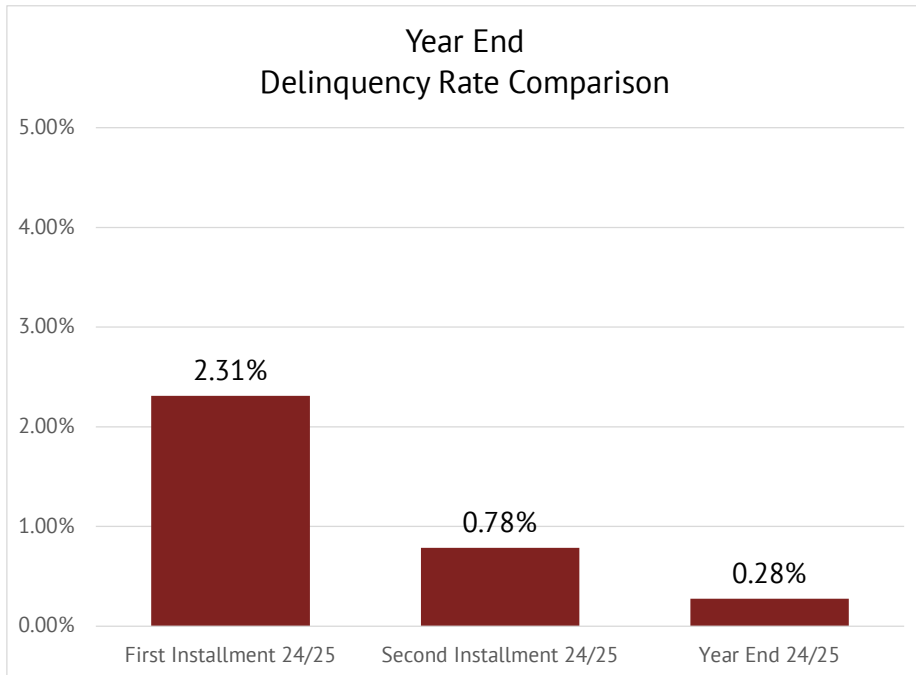
Foreclosure Qualification

Individual Parcel Delinquency	\$7,500
Individual Owner Multiple Parcels Delinquency	\$15,000
Individual Parcels Semi-Annual Installments	N/A
Aggregate Delinquency Rate	5%

Parcels Qualifying for Foreclosure

Parcels Exceeding Individual Foreclosure Threshold	0
Parcels Exceeding CFD Aggregate	0
Pursuant to the Foreclosure Covenant in the Bond Indenture, there is no requirement to initiate Foreclosure Proceedings for aggregate delinquencies if such delinquencies do not create a draw on the Reserve Fund that would bring it below the Reserve Requirement.	

Year End
Delinquency Rate Comparison





Fixed Charge Special Assessment Delinquency Report

Year End Report for Fiscal Year 2024/2025

Improvement Area A of Poway Unified School District Community Facilities District No. 10



Historical Delinquency Summary

Fiscal Year	Subject Fiscal Year				June 30, 2025		
	Aggregate Special Tax	Parcels Delinquent [1]	Amount Collected	Amount Delinquent	Delinquency Rate	Remaining Amount Delinquent	Remaining Delinquency Rate
2020/2021	\$1,065,439.00	N/A	\$1,061,209.00	\$4,230.00	0.40%	\$0.00	0.00%
2021/2022	1,080,060.00	N/A	1,070,535.00	9,525.00	0.88%	0.00	0.00%
2022/2023	1,098,990.72	2	1,096,579.46	2,411.26	0.22%	0.00	0.00%
2023/2024	1,120,980.42	2	1,118,520.91	2,459.51	0.22%	0.00	0.00%
2024/2025	1,143,398.60	3	1,140,250.85	3,147.75	0.28%	3,147.75	0.28%

[1] Information not provided by previous administrator for Fiscal Years 2020/2021 through 2021/2022.

Historical Delinquency Rate

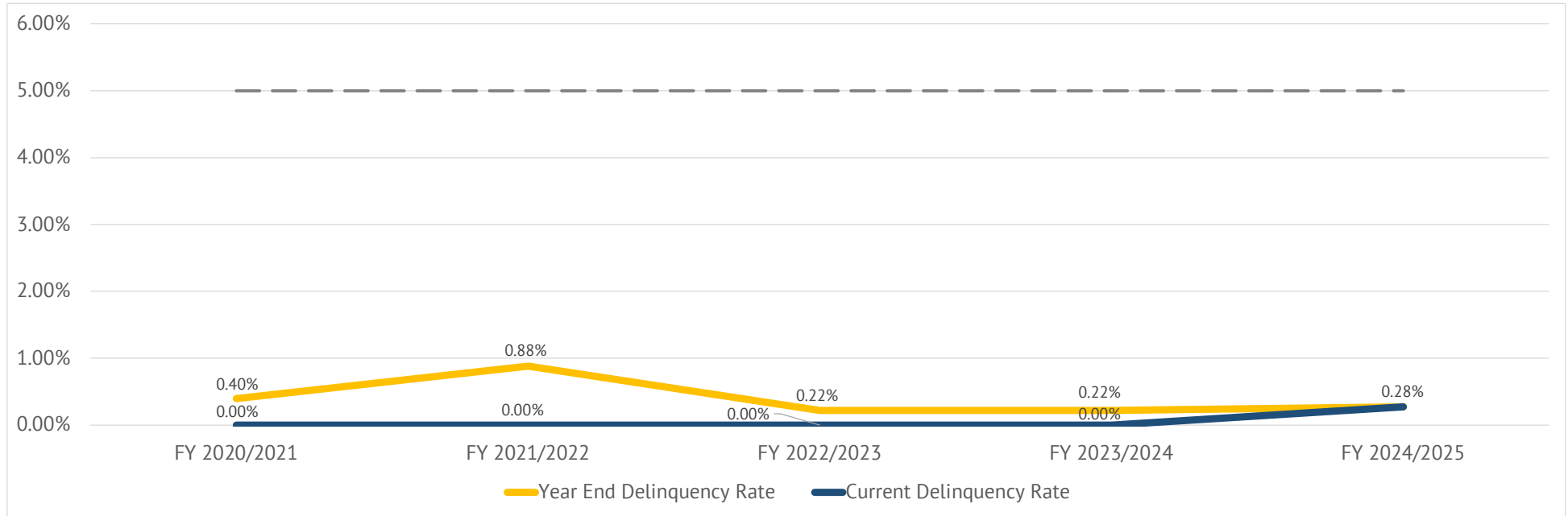


Exhibit F

Summary of Transactions for Fiscal Agent Accounts

Fund: CFD No. 10 Improvement Area A
Subfund: 7150931A - Special Tax Fund

Date	Interest	Deposits	Transfers In	Transfers Out	Expenditures	Balance	Payee	Reference	Description
07-01-2024	\$76,562.26	\$6,287,981.77	\$0.00	(\$5,351,058.10)	\$0.00	\$1,013,485.93			BEGINNING BALANCE
07-01-2024	\$4,105.20					\$1,017,591.13		Interest	Interest Earnings
07-22-2024		\$8,075.58				\$1,025,666.71		Deposit	Special Tax Deposit
08-01-2024	\$4,297.45					\$1,029,964.16		Interest	Interest Earnings
09-03-2024	\$4,336.82					\$1,034,300.98		Interest	Interest Earnings
09-03-2024				(\$460,000.00)		\$574,300.98		Transfer Out	Transfer To 7150931C Principal Account
09-03-2024				(\$110,500.00)		\$463,800.98		Transfer Out	Transfer To 7150931B Interest Account
10-01-2024	\$1,983.42					\$465,784.40		Interest	Interest Earnings
10-16-2024		\$6,616.43				\$472,400.83		Deposit	Special Tax Deposit
11-01-2024	\$1,795.41					\$474,196.24		Interest	Interest Earnings
11-20-2024		\$75,055.53				\$549,251.77		Deposit	Special Tax Deposit
12-02-2024	\$1,778.01					\$551,029.78		Interest	Interest Earnings
12-11-2024				(\$463,800.98)		\$87,228.80		Transfer Out	Transfer To 7150840 Custodial Account
12-16-2024		\$207,852.41				\$295,081.21		Deposit	Special Tax Deposit
01-02-2025	\$1,226.32					\$296,307.53		Interest	Interest Earnings
01-15-2025		\$321,178.49				\$617,486.02		Deposit	Special Tax Deposit
01-17-2025				(\$23,189.69)		\$594,296.33		Transfer Out	Transfer To 7150931I Administrative Expense Fund
02-03-2025	\$1,574.15					\$595,870.48		Interest	Interest Earnings
02-19-2025		\$47,521.40				\$643,391.88		Deposit	Special Tax Deposit
03-03-2025	\$1,882.09					\$645,273.97		Interest	Interest Earnings
03-03-2025				(\$98,890.12)		\$546,383.85		Transfer Out	Transfer To 7150931B Interest Account
03-19-2025		\$32,980.38				\$579,364.23		Deposit	Special Tax Deposit
04-01-2025	\$1,910.85					\$581,275.08		Interest	Interest Earnings
04-21-2025		\$401,942.85				\$983,217.93		Deposit	Special Tax Deposit
05-01-2025	\$2,334.29					\$985,552.22		Interest	Interest Earnings
05-14-2025		\$49,151.89				\$1,034,704.11		Deposit	Special Tax Deposit
06-02-2025	\$3,392.40					\$1,038,096.51		Interest	Interest Earnings
06-18-2025		\$5,825.59				\$1,043,922.10		Deposit	Special Tax Deposit
	\$30,616.41	\$1,156,200.55	\$0.00	(\$1,156,380.79)	\$0.00	\$0,436.17			DATE RANGE BALANCE
Subfund Total	\$107,178.67	\$7,444,182.32	\$0.00	(\$6,507,438.89)	\$0.00	\$1,043,922.10	Total for 7150931A - Special Tax Fund		

Subfund: 7150931B - Interest Account

Date	Interest	Deposits	Transfers In	Transfers Out	Expenditures	Balance	Payee	Reference	Description
07-01-2024	\$209.18	\$0.00	\$1,340,547.38	\$0.00	(\$1,340,650.00)	\$106.56			BEGINNING BALANCE
07-01-2024	\$0.43					\$106.99		Interest	Interest Earnings
08-01-2024	\$0.45					\$107.44		Interest	Interest Earnings
09-03-2024					(\$110,500.00)	(\$110,392.56)	Cede & Company	Debt Service Interest	Debt Service Interest
09-03-2024			\$110,500.00			\$107.44		Transfer In	Transfer From 7150931A Special Tax Fund
09-03-2024	\$0.45					\$107.89		Interest	Interest Earnings
10-01-2024	\$0.43					\$108.32		Interest	Interest Earnings
11-01-2024	\$0.41					\$108.73		Interest	Interest Earnings

Subfund: 7150931B - Interest Account

Date	Interest	Deposits	Transfers In	Transfers Out	Expenditures	Balance	Payee	Reference	Description
12-02-2024	\$0.39					\$109.12		Interest	Interest Earnings
01-02-2025	\$0.39					\$109.51		Interest	Interest Earnings
02-03-2025	\$0.37					\$109.88		Interest	Interest Earnings
03-03-2025					(\$99,000.00)	(\$98,890.12)	Cede & Company	Debt Service Interest	Debt Service Interest
03-03-2025			\$98,890.12			\$0.00		Transfer In	Transfer From 7150931A Special Tax Fund
03-03-2025	\$0.34					\$0.34		Interest	Interest Earnings
04-01-2025	\$0.03					\$0.37		Interest	Interest Earnings
	\$3.69	\$0.00	\$209,390.12	\$0.00	(\$209,500.00)	(\$106.19)			DATE RANGE BALANCE
Subfund Total	\$212.87	\$0.00	\$1,549,937.50	\$0.00	(\$1,550,150.00)	\$0.37	Total for 7150931B - Interest Account		

Subfund: 7150931C - Principal Account

Date	Interest	Deposits	Transfers In	Transfers Out	Expenditures	Balance	Payee	Reference	Description
07-01-2024	\$0.00	\$0.00	\$1,850,000.00	\$0.00	(\$1,850,000.00)	\$0.00			BEGINNING BALANCE
09-03-2024					(\$460,000.00)	(\$460,000.00)	Cede & Company	Debt Service Principal	Debt Service Principal
09-03-2024			\$460,000.00			\$0.00		Transfer In	Transfer From 7150931A Special Tax Fund
	\$0.00	\$0.00	\$460,000.00	\$0.00	(\$460,000.00)	\$0.00			DATE RANGE BALANCE
Subfund Total	\$0.00	\$0.00	\$2,310,000.00	\$0.00	(\$2,310,000.00)	\$0.00	Total for 7150931C - Principal Account		

Subfund: 7150931I - Administration Expense Fund

Date	Interest	Deposits	Transfers In	Transfers Out	Expenditures	Balance	Payee	Reference	Description
07-01-2024	\$2,881.28	\$21,160.90	\$109,303.68	\$0.00	(\$84,267.53)	\$49,078.33			BEGINNING BALANCE
07-01-2024	\$199.65					\$49,277.98		Interest	Interest Earnings
08-01-2024	\$207.58					\$49,485.56		Interest	Interest Earnings
08-20-2024					(\$10,000.00)	\$39,485.56	Poway Unified School District	Professional Services	Req# 9311-2425-0001 Inv# 2023-2024 Memo
09-03-2024	\$192.07					\$39,677.63		Interest	Interest Earnings
10-01-2024	\$156.48					\$39,834.11		Interest	Interest Earnings
11-01-2024	\$152.43					\$39,986.54		Interest	Interest Earnings
12-02-2024	\$141.80					\$40,128.34		Interest	Interest Earnings
01-02-2025	\$142.72					\$40,271.06		Interest	Interest Earnings
01-17-2025			\$23,189.69			\$63,460.75		Transfer In	Transfer From 7150931A Special Tax Fund
02-03-2025	\$175.82					\$63,636.57		Interest	Interest Earnings
03-03-2025	\$195.44					\$63,832.01		Interest	Interest Earnings
04-01-2025	\$215.26					\$64,047.27		Interest	Interest Earnings
04-10-2025					(\$20,000.00)	\$44,047.27	Poway Unified School District	Professional Services	Req#9311-2425-0002 dtd 04-09-25 Inv#2024-2025 Memo dtd 04-08-25-2024-2025 Memo
05-01-2025	\$163.47					\$44,210.74		Interest	Interest Earnings
06-02-2025	\$147.90					\$44,358.64		Interest	Interest Earnings
06-12-2025					(\$567.00)	\$43,791.64	Zions First National	Professional Services	Req. No. 9311-2425-0003 Trustee Services Annual Admin Fee Feb 2025 - Jan 2026 Inv.#13048
06-12-2025					(\$1,950.00)	\$41,841.64	Zions First National	Professional Services	Req. No. 9311-2425-0003 Fiscal Agent Services Annual Admin Fee Feb 2025 - Jan 2026 Inv.#13049
	\$2,090.62	\$0.00	\$23,189.69	\$0.00	(\$32,517.00)	(\$7,236.69)			DATE RANGE BALANCE
Subfund Total	\$4,971.90	\$21,160.90	\$132,493.37	\$0.00	(\$116,784.53)	\$41,841.64	Total for 7150931I - Administration Expense Fund		

Subfund: 7150931R - Redemption Fund									
Date	Interest	Deposits	Transfers In	Transfers Out	Expenditures	Balance	Payee	Reference	Description
07-01-2024	\$485.25	\$78,047.37	\$0.00	\$0.00	(\$77,250.00)	\$1,282.62			BEGINNING BALANCE
07-01-2024	\$5.22					\$1,287.84		Interest	Interest Earnings
08-01-2024	\$5.42					\$1,293.26		Interest	Interest Earnings
09-03-2024	\$5.45					\$1,298.71		Interest	Interest Earnings
10-01-2024	\$5.12					\$1,303.83		Interest	Interest Earnings
11-01-2024	\$4.99					\$1,308.82		Interest	Interest Earnings
12-02-2024	\$4.64					\$1,313.46		Interest	Interest Earnings
01-02-2025	\$4.67					\$1,318.13		Interest	Interest Earnings
02-03-2025	\$4.50					\$1,322.63		Interest	Interest Earnings
03-03-2025	\$4.06					\$1,326.69		Interest	Interest Earnings
04-01-2025	\$4.47					\$1,331.16		Interest	Interest Earnings
05-01-2025	\$4.35					\$1,335.51		Interest	Interest Earnings
06-02-2025	\$4.47					\$1,339.98		Interest	Interest Earnings
	\$57.36	\$0.00	\$0.00	\$0.00	\$0.00	\$57.36			DATE RANGE BALANCE
Subfund Total	\$542.61	\$78,047.37	\$0.00	\$0.00	(\$77,250.00)	\$1,339.98	Total for 7150931R - Redemption Fund		
Fund Total	\$112,906.05	\$7,543,390.59	\$3,992,430.87	(\$6,507,438.89)	(\$4,054,184.53)	\$1,087,104.09	Total for CFD No. 10 Improvement Area A		
Grand Total	\$112,906.05	\$7,543,390.59	\$3,992,430.87	(\$6,507,438.89)	(\$4,054,184.53)	\$1,087,104.09	Grand Total for Selected Funds/SubFunds		

Exhibit G

Annual Special Tax Roll for Fiscal Year 2025/2026

Poway Unified School District
Community Facilities District No. 10 Improvement Area A
Fiscal Year 2025/2026 Special Tax Roll

Tract	Lot	Assessor's Parcel Number	Maximum Special Tax	Assigned Special Tax
14273	1	306-300-01-00	\$4,042.12	\$4,042.12
14273	2	306-300-02-00	\$4,042.12	\$4,042.12
14273	3	306-300-03-00	\$3,315.60	\$3,315.60
14273	4	306-300-04-00	\$4,042.12	\$4,042.12
14273	5	306-300-05-00	\$4,042.12	\$4,042.12
14273	6	306-300-06-00	\$3,315.60	\$3,315.60
14273	7	306-300-07-00	\$4,042.12	\$4,042.12
14273	8	306-300-08-00	\$4,042.12	\$4,042.12
14273	9	306-300-09-00	\$4,042.12	\$4,042.12
14273	10	306-300-10-00	\$3,315.60	\$3,315.60
14273	11	306-300-11-00	\$4,042.12	\$4,042.12
14273	12	306-300-12-00	\$3,315.60	\$3,315.60
14273	13	306-300-13-00	\$4,042.12	\$4,042.12
14273	14	306-300-14-00	\$3,315.60	\$3,315.60
14273	15	306-300-15-00	\$4,042.12	\$4,042.12
14273	16	306-300-16-00	\$4,042.12	\$4,042.12
14273	17	306-300-17-00	\$3,315.60	\$3,315.60
14273	18	306-300-18-00	\$4,042.12	\$4,042.12
14273	19	306-300-19-00	\$3,315.60	\$3,315.60
14273	20	306-300-20-00	\$3,315.60	\$3,315.60
14273	21	306-300-21-00	\$4,042.12	\$4,042.12
14273	22	306-300-22-00	\$3,315.60	\$3,315.60
14273	23	306-300-23-00	\$3,315.60	\$3,315.60
14273	24	306-300-24-00	\$4,042.12	\$4,042.12
14273	25	306-300-25-00	\$3,315.60	\$3,315.60
14273	26	306-300-26-00	\$3,315.60	\$3,315.60
14273	27	306-300-27-00	\$4,042.12	\$4,042.12
14273	28	306-300-28-00	\$3,315.60	\$3,315.60
14273	29	306-300-29-00	\$3,315.60	\$3,315.60
14273	30	306-300-30-00	\$4,042.12	\$4,042.12
14273	31	306-300-31-00	\$3,315.60	\$3,315.60
14273	32	306-300-32-00	\$3,315.60	\$3,315.60
14273	33	306-300-33-00	\$4,042.12	\$4,042.12
14273	34	306-300-34-00	\$3,315.60	\$3,315.60
14273	35	306-300-35-00	\$4,042.12	\$4,042.12
14273	36	306-300-36-00	\$4,042.12	\$4,042.12
14273	37	306-300-37-00	\$3,315.60	\$3,315.60
14273	38	306-300-38-00	\$4,042.12	\$4,042.12
14273	39	306-300-39-00	\$4,042.12	\$4,042.12
14273	66	306-300-40-00	\$3,315.60	\$3,315.60
14273	40	306-301-01-00	\$3,315.60	\$3,315.60
14273	41	306-301-02-00	\$4,042.12	\$4,042.12

Poway Unified School District
Community Facilities District No. 10 Improvement Area A
Fiscal Year 2025/2026 Special Tax Roll

Tract	Lot	Assessor's Parcel Number	Maximum Special Tax	Assigned Special Tax
14273	42	306-301-03-00	\$3,315.60	\$3,315.60
14273	43	306-301-04-00	\$4,042.12	\$4,042.12
14273	44	306-301-05-00	\$4,042.12	\$4,042.12
14273	45	306-301-06-00	\$4,042.12	\$4,042.12
14273	46	306-301-07-00	\$0.00	\$0.00
14273	47	306-301-08-00	\$4,042.12	\$4,042.12
14273	48	306-301-09-00	\$4,042.12	\$4,042.12
14273	49	306-301-10-00	\$4,042.12	\$4,042.12
14273	50	306-301-11-00	\$4,042.12	\$4,042.12
14273	51	306-301-12-00	\$4,042.12	\$4,042.12
14273	52	306-301-13-00	\$4,042.12	\$4,042.12
14273	53	306-301-14-00	\$4,042.12	\$4,042.12
14273	54	306-301-15-00	\$3,315.60	\$3,315.60
14273	55	306-301-16-00	\$3,315.60	\$3,315.60
14273	56	306-301-17-00	\$4,042.12	\$4,042.12
14273	57	306-301-18-00	\$4,042.12	\$4,042.12
14273	58	306-301-19-00	\$4,042.12	\$4,042.12
14273	59	306-301-20-00	\$3,315.60	\$3,315.60
14273	60	306-301-21-00	\$4,042.12	\$4,042.12
14273	61	306-301-22-00	\$4,042.12	\$4,042.12
14273	62	306-301-23-00	\$3,315.60	\$3,315.60
14273	63	306-301-24-00	\$4,042.12	\$4,042.12
14273	64	306-301-25-00	\$4,042.12	\$4,042.12
14273	65	306-301-26-00	\$4,042.12	\$4,042.12
14273	A	306-301-27-00	\$0.00	\$0.00
14273	B	306-301-28-00	\$0.00	\$0.00
14273	C	306-301-29-00	\$0.00	\$0.00
14274	13	306-310-05-00	\$2,831.26	\$2,831.26
14274	14	306-310-06-00	\$2,225.82	\$2,225.82
14274	15	306-310-07-00	\$2,831.26	\$2,831.26
14274	16	306-310-08-00	\$3,194.52	\$3,194.52
14274	17	306-310-09-00	\$2,225.82	\$2,225.82
14274	18	306-310-10-00	\$3,194.52	\$3,194.52
14274	19	306-310-11-00	\$2,225.82	\$2,225.82
14274	20	306-310-12-00	\$3,194.52	\$3,194.52
14274	21	306-310-13-00	\$2,831.26	\$2,831.26
14274	22	306-310-14-00	\$3,194.52	\$3,194.52
14274	23	306-310-15-00	\$2,831.26	\$2,831.26
14274	24	306-310-16-00	\$3,194.52	\$3,194.52
14274	25	306-310-17-00	\$2,225.82	\$2,225.82
14274	26	306-310-18-00	\$3,194.52	\$3,194.52
14274	27	306-310-19-00	\$2,831.26	\$2,831.26

Poway Unified School District
Community Facilities District No. 10 Improvement Area A
Fiscal Year 2025/2026 Special Tax Roll

Tract	Lot	Assessor's Parcel Number	Maximum Special Tax	Assigned Special Tax
14274	28	306-310-20-00	\$2,225.82	\$2,225.82
14274	29	306-310-21-00	\$3,194.52	\$3,194.52
14274	30	306-310-22-00	\$2,225.82	\$2,225.82
14274	31	306-310-23-00	\$2,831.26	\$2,831.26
14274	32	306-310-24-00	\$3,194.52	\$3,194.52
14274	33	306-310-25-00	\$2,831.26	\$2,831.26
14274	34	306-310-26-00	\$2,225.82	\$2,225.82
14274	35	306-310-27-00	\$3,194.52	\$3,194.52
14274	42	306-310-34-00	\$2,225.82	\$2,225.82
14274	43	306-310-35-00	\$2,831.26	\$2,831.26
14274	44	306-310-36-00	\$3,194.52	\$3,194.52
14274	45	306-310-37-00	\$2,225.82	\$2,225.82
14274	46	306-310-38-00	\$2,831.26	\$2,831.26
14274	47	306-310-39-00	\$3,194.52	\$3,194.52
14274	48	306-310-40-00	\$2,831.26	\$2,831.26
14274	49	306-310-41-00	\$2,225.82	\$2,225.82
14274	50	306-310-42-00	\$3,194.52	\$3,194.52
14274	51	306-310-43-00	\$2,831.26	\$2,831.26
14274	52	306-310-44-00	\$2,225.82	\$2,225.82
14274	55	306-310-47-00	\$3,194.52	\$3,194.52
14274	56	306-310-48-00	\$2,831.26	\$2,831.26
14274	57	306-310-49-00	\$2,589.10	\$2,589.10
14274	58	306-310-50-00	\$2,831.26	\$2,831.26
14274	59	306-310-51-00	\$3,194.52	\$3,194.52
14274	60	306-310-52-00	\$2,589.10	\$2,589.10
14274	61	306-310-53-00	\$2,831.26	\$2,831.26
14274	62	306-310-54-00	\$2,589.10	\$2,589.10
14274	63	306-310-55-00	\$0.00	\$0.00
14274	64	306-310-56-00	\$2,589.10	\$2,589.10
14274	65	306-310-57-00	\$3,194.52	\$3,194.52
14274	66	306-310-58-00	\$2,831.26	\$2,831.26
14274	67	306-310-59-00	\$3,194.52	\$3,194.52
14274	68	306-310-60-00	\$2,589.10	\$2,589.10
14274	69	306-310-61-00	\$3,194.52	\$3,194.52
14274	70	306-310-62-00	\$2,831.26	\$2,831.26
14274	71	306-311-01-00	\$2,225.82	\$2,225.82
14274	72	306-311-02-00	\$3,194.52	\$3,194.52
14274	73	306-311-03-00	\$2,831.26	\$2,831.26
14274	74	306-311-04-00	\$2,225.82	\$2,225.82
14274	75	306-311-05-00	\$3,194.52	\$3,194.52
14274	76	306-311-06-00	\$2,831.26	\$2,831.26
14274	77	306-311-07-00	\$2,225.82	\$2,225.82

Poway Unified School District
Community Facilities District No. 10 Improvement Area A
Fiscal Year 2025/2026 Special Tax Roll

Tract	Lot	Assessor's Parcel Number	Maximum Special Tax	Assigned Special Tax
14274	78	306-311-08-00	\$2,831.26	\$2,831.26
14274	79	306-311-09-00	\$3,194.52	\$3,194.52
14274	80	306-311-10-00	\$2,225.82	\$2,225.82
14274	81	306-311-11-00	\$3,194.52	\$3,194.52
14274	82	306-311-12-00	\$2,831.26	\$2,831.26
14274	83	306-311-13-00	\$3,194.52	\$3,194.52
14274	84	306-311-14-00	\$2,225.82	\$2,225.82
14274	85	306-311-15-00	\$3,194.52	\$3,194.52
14274	86	306-311-16-00	\$2,831.26	\$2,831.26
14274	87	306-311-17-00	\$3,194.52	\$3,194.52
14274	88	306-311-18-00	\$2,831.26	\$2,831.26
14274	89	306-311-19-00	\$3,194.52	\$3,194.52
14274	90	306-311-20-00	\$2,225.82	\$2,225.82
14274	91	306-311-21-00	\$2,831.26	\$2,831.26
14274	92	306-311-22-00	\$3,194.52	\$3,194.52
14274	93	306-311-23-00	\$2,831.26	\$2,831.26
14274	94	306-311-24-00	\$2,225.82	\$2,225.82
14274	95	306-311-25-00	\$3,194.52	\$3,194.52
14274	96	306-311-26-00	\$2,831.26	\$2,831.26
14274	97	306-311-27-00	\$3,194.52	\$3,194.52
14274	98	306-311-28-00	\$2,831.26	\$2,831.26
14274	99	306-311-29-00	\$3,194.52	\$3,194.52
14274	100	306-311-30-00	\$3,194.52	\$3,194.52
14274	101	306-311-31-00	\$2,831.26	\$2,831.26
14274	102	306-311-32-00	\$2,225.82	\$2,225.82
14274	103	306-311-33-00	\$3,194.52	\$3,194.52
14274	104	306-311-34-00	\$2,831.26	\$2,831.26
14274	105	306-311-35-00	\$3,194.52	\$3,194.52
14274	106	306-311-36-00	\$2,225.82	\$2,225.82
14274	107	306-311-37-00	\$3,194.52	\$3,194.52
14274	108	306-311-38-00	\$2,225.82	\$2,225.82
14274	109	306-311-39-00	\$3,194.52	\$3,194.52
14274	110	306-311-40-00	\$2,831.26	\$2,831.26
14274	111	306-311-41-00	\$3,194.52	\$3,194.52
14274	112	306-311-42-00	\$3,194.52	\$3,194.52
14274	113	306-311-43-00	\$3,194.52	\$3,194.52
14274	114	306-311-44-00	\$2,831.26	\$2,831.26
14274	117	306-311-47-00	\$0.00	\$0.00
14274	118	306-311-48-00	\$0.00	\$0.00
14274	119	306-311-49-00	\$3,194.52	\$3,194.52
14274	120	306-311-50-00	\$3,194.52	\$3,194.52
14274	121	306-311-51-00	\$2,225.82	\$2,225.82

Poway Unified School District
Community Facilities District No. 10 Improvement Area A
Fiscal Year 2025/2026 Special Tax Roll

Tract	Lot	Assessor's Parcel Number	Maximum Special Tax	Assigned Special Tax
14274	122	306-311-52-00	\$2,831.26	\$2,831.26
14274	123	306-311-53-00	\$3,194.52	\$3,194.52
14274	124	306-311-54-00	\$2,831.26	\$2,831.26
14274	125	306-311-55-00	\$3,194.52	\$3,194.52
14274	126	306-311-56-00	\$2,831.26	\$2,831.26
14274	127	306-311-57-00	\$2,225.82	\$2,225.82
14274	128	306-311-58-00	\$3,194.52	\$3,194.52
14274	129	306-311-59-00	\$2,225.82	\$2,225.82
14274	130	306-311-60-00	\$2,831.26	\$2,831.26
14274	131	306-311-61-00	\$3,194.52	\$3,194.52
14274	132	306-311-62-00	\$2,589.10	\$2,589.10
14274	B	306-311-64-00	\$0.00	\$0.00
14274	C	306-311-65-00	\$0.00	\$0.00
14592	38	306-311-67-00	\$2,831.26	\$2,831.26
14592	39	306-311-68-00	\$2,831.26	\$2,831.26
14592	40	306-311-69-00	\$2,589.10	\$2,589.10
14592	A	306-311-70-00	\$0.00	\$0.00
14274	E	306-312-02-00	\$0.00	\$0.00
14274	PAR B	306-312-03-00	\$0.00	\$0.00
14592	1	306-313-01-00	\$3,194.52	\$3,194.52
14592	2	306-313-02-00	\$2,831.26	\$2,831.26
14592	3	306-313-03-00	\$2,589.10	\$2,589.10
14592	4	306-313-04-00	\$2,831.26	\$2,831.26
14592	5	306-313-05-00	\$3,194.52	\$3,194.52
14592	6	306-313-06-00	\$2,589.10	\$2,589.10
14592	7	306-313-07-00	\$2,831.26	\$2,831.26
14592	8	306-313-08-00	\$3,194.52	\$3,194.52
14592	9	306-313-09-00	\$2,589.10	\$2,589.10
14592	10	306-313-10-00	\$3,194.52	\$3,194.52
14592	11	306-313-11-00	\$2,831.26	\$2,831.26
14592	12	306-313-12-00	\$3,194.52	\$3,194.52
14592	13	306-313-13-00	\$2,831.26	\$2,831.26
14592	14	306-313-14-00	\$2,589.10	\$2,589.10
14592	15	306-313-15-00	\$2,831.26	\$2,831.26
14592	16	306-313-16-00	\$2,589.10	\$2,589.10
14592	17	306-313-17-00	\$3,194.52	\$3,194.52
14592	18	306-313-18-00	\$2,589.10	\$2,589.10
14592	19	306-313-19-00	\$2,831.26	\$2,831.26
14592	20	306-313-20-00	\$2,831.26	\$2,831.26
14592	21	306-313-21-00	\$3,194.52	\$3,194.52
14592	22	306-313-22-00	\$2,831.26	\$2,831.26
14592	23	306-313-23-00	\$3,194.52	\$3,194.52

Poway Unified School District
Community Facilities District No. 10 Improvement Area A
Fiscal Year 2025/2026 Special Tax Roll

Tract	Lot	Assessor's Parcel Number	Maximum Special Tax	Assigned Special Tax
14592	24	306-313-24-00	\$2,831.26	\$2,831.26
14592	25	306-313-25-00	\$3,194.52	\$3,194.52
14592	26	306-313-26-00	\$2,831.26	\$2,831.26
14592	27	306-313-27-00	\$2,589.10	\$2,589.10
14592	28	306-313-28-00	\$3,194.52	\$3,194.52
14592	29	306-313-29-00	\$2,589.10	\$2,589.10
14592	30	306-313-30-00	\$3,194.52	\$3,194.52
14592	31	306-313-31-00	\$2,589.10	\$2,589.10
14592	32	306-313-32-00	\$2,831.26	\$2,831.26
14592	33	306-313-33-00	\$3,194.52	\$3,194.52
14592	34	306-313-34-00	\$2,589.10	\$2,589.10
14592	35	306-313-35-00	\$3,194.52	\$3,194.52
14592	36	306-313-36-00	\$2,589.10	\$2,589.10
14592	37	306-313-37-00	\$3,194.52	\$3,194.52
14592	B	306-313-38-00	\$0.00	\$0.00
14275	133	306-320-01-00	\$3,921.04	\$3,921.04
14275	134	306-320-02-00	\$3,921.04	\$3,921.04
14275	135	306-320-03-00	\$3,921.04	\$3,921.04
14275	136	306-320-04-00	\$3,921.04	\$3,921.04
14275	137	306-320-05-00	\$3,921.04	\$3,921.04
14275	138	306-320-06-00	\$3,921.04	\$3,921.04
14275	139	306-320-07-00	\$3,921.04	\$3,921.04
14275	140	306-320-08-00	\$3,921.04	\$3,921.04
14275	141	306-320-09-00	\$3,921.04	\$3,921.04
14275	142	306-320-10-00	\$3,921.04	\$3,921.04
14275	143	306-320-11-00	\$3,921.04	\$3,921.04
14275	144	306-320-12-00	\$3,921.04	\$3,921.04
14275	145	306-320-13-00	\$3,921.04	\$3,921.04
14275	146	306-320-14-00	\$3,921.04	\$3,921.04
14275	147	306-320-15-00	\$3,921.04	\$3,921.04
14275	148	306-320-16-00	\$3,921.04	\$3,921.04
14275	149	306-320-17-00	\$3,921.04	\$3,921.04
14275	166	306-320-18-00	\$0.00	\$0.00
14275	167	306-320-19-00	\$3,921.04	\$3,921.04
14275	168	306-320-20-00	\$3,921.04	\$3,921.04
14275	169	306-320-21-00	\$3,921.04	\$3,921.04
14275	170	306-320-22-00	\$3,921.04	\$3,921.04
14275	171	306-320-23-00	\$3,921.04	\$3,921.04
14275	172	306-320-24-00	\$3,921.04	\$3,921.04
14275	173	306-320-25-00	\$3,921.04	\$3,921.04
14275	174	306-320-26-00	\$3,921.04	\$3,921.04
14275	175	306-320-27-00	\$3,921.04	\$3,921.04

Poway Unified School District
Community Facilities District No. 10 Improvement Area A
Fiscal Year 2025/2026 Special Tax Roll

Tract	Lot	Assessor's Parcel Number	Maximum Special Tax	Assigned Special Tax
14275	176	306-320-28-00	\$3,921.04	\$3,921.04
14275	177	306-320-29-00	\$3,921.04	\$3,921.04
14275	178	306-320-30-00	\$3,921.04	\$3,921.04
14275	179	306-320-31-00	\$3,921.04	\$3,921.04
14275	180	306-320-32-00	\$3,921.04	\$3,921.04
14275	181	306-320-33-00	\$3,921.04	\$3,921.04
14275	200	306-320-34-00	\$3,921.04	\$3,921.04
14275	201	306-320-35-00	\$3,921.04	\$3,921.04
14275	202	306-320-36-00	\$3,921.04	\$3,921.04
14275	203	306-320-37-00	\$3,921.04	\$3,921.04
14275	204	306-320-38-00	\$3,921.04	\$3,921.04
14275	205	306-320-39-00	\$3,921.04	\$3,921.04
14275	206	306-320-40-00	\$3,921.04	\$3,921.04
14275	207	306-320-41-00	\$3,921.04	\$3,921.04
14275	208	306-320-42-00	\$3,921.04	\$3,921.04
14275	209	306-320-43-00	\$3,921.04	\$3,921.04
14275	210	306-320-44-00	\$3,921.04	\$3,921.04
14275	211	306-320-45-00	\$3,921.04	\$3,921.04
14275	212	306-320-46-00	\$3,921.04	\$3,921.04
14275	213	306-320-47-00	\$3,921.04	\$3,921.04
14275	214	306-320-48-00	\$3,921.04	\$3,921.04
14275	215	306-320-49-00	\$3,921.04	\$3,921.04
14275	216	306-320-50-00	\$3,921.04	\$3,921.04
14275	217	306-320-51-00	\$3,921.04	\$3,921.04
14275	218	306-320-52-00	\$3,921.04	\$3,921.04
14275	219	306-320-53-00	\$3,921.04	\$3,921.04
14275	F	306-320-54-00	\$0.00	\$0.00
14275	G	306-320-55-00	\$0.00	\$0.00
14275	H	306-320-56-00	\$0.00	\$0.00
14275	I	306-320-57-00	\$0.00	\$0.00
14275	M	306-320-58-00	\$0.00	\$0.00
14275	150	306-321-01-00	\$3,921.04	\$3,921.04
14275	151	306-321-02-00	\$3,921.04	\$3,921.04
14275	152	306-321-03-00	\$3,921.04	\$3,921.04
14275	153	306-321-04-00	\$3,921.04	\$3,921.04
14275	154	306-321-05-00	\$3,921.04	\$3,921.04
14275	155	306-321-06-00	\$3,921.04	\$3,921.04
14275	156	306-321-07-00	\$0.00	\$0.00
14275	157	306-321-08-00	\$0.00	\$0.00
14275	158	306-321-09-00	\$3,921.04	\$3,921.04
14275	159	306-321-10-00	\$3,921.04	\$3,921.04
14275	160	306-321-11-00	\$3,921.04	\$3,921.04

Poway Unified School District
Community Facilities District No. 10 Improvement Area A
Fiscal Year 2025/2026 Special Tax Roll

Tract	Lot	Assessor's Parcel Number	Maximum Special Tax	Assigned Special Tax
14275	161	306-321-12-00	\$3,921.04	\$3,921.04
14275	162	306-321-13-00	\$3,921.04	\$3,921.04
14275	163	306-321-14-00	\$3,921.04	\$3,921.04
14275	164	306-321-15-00	\$3,921.04	\$3,921.04
14275	165	306-321-16-00	\$3,921.04	\$3,921.04
14275	182	306-321-17-00	\$3,921.04	\$3,921.04
14275	183	306-321-18-00	\$3,921.04	\$3,921.04
14275	184	306-321-19-00	\$3,921.04	\$3,921.04
14275	185	306-321-20-00	\$0.00	\$0.00
14275	186	306-321-21-00	\$3,921.04	\$3,921.04
14275	187	306-321-22-00	\$3,921.04	\$3,921.04
14275	188	306-321-23-00	\$3,921.04	\$3,921.04
14275	189	306-321-24-00	\$3,921.04	\$3,921.04
14275	190	306-321-25-00	\$3,921.04	\$3,921.04
14275	191	306-321-26-00	\$3,921.04	\$3,921.04
14275	192	306-321-27-00	\$3,921.04	\$3,921.04
14275	193	306-321-28-00	\$3,921.04	\$3,921.04
14275	194	306-321-29-00	\$3,921.04	\$3,921.04
14275	195	306-321-30-00	\$3,921.04	\$3,921.04
14275	196	306-321-31-00	\$3,921.04	\$3,921.04
14275	197	306-321-32-00	\$3,921.04	\$3,921.04
14275	198	306-321-33-00	\$3,436.68	\$3,436.68
14275	199	306-321-34-00	\$3,921.04	\$3,921.04
14275	220	306-321-35-00	\$3,921.04	\$3,921.04
14275	221	306-321-36-00	\$3,436.68	\$3,436.68
14275	222	306-321-37-00	\$3,921.04	\$3,921.04
14275	223	306-321-38-00	\$3,921.04	\$3,921.04
14275	224	306-321-39-00	\$3,921.04	\$3,921.04
14275	225	306-321-40-00	\$3,921.04	\$3,921.04
14275	226	306-321-41-00	\$3,436.68	\$3,436.68
14275	227	306-321-42-00	\$3,921.04	\$3,921.04
14275	228	306-321-43-00	\$3,921.04	\$3,921.04
14275	229	306-321-44-00	\$3,921.04	\$3,921.04
14275	230	306-321-45-00	\$3,921.04	\$3,921.04
14275	231	306-321-46-00	\$3,921.04	\$3,921.04
14275	232	306-321-47-00	\$3,921.04	\$3,921.04
14275	233	306-321-48-00	\$3,921.04	\$3,921.04
14275	234	306-321-49-00	\$3,921.04	\$3,921.04
14275	235	306-321-50-00	\$3,921.04	\$3,921.04
14275	236	306-321-51-00	\$3,921.04	\$3,921.04
14275	237	306-321-52-00	\$3,921.04	\$3,921.04
14275	238	306-321-53-00	\$3,921.04	\$3,921.04

Poway Unified School District
Community Facilities District No. 10 Improvement Area A
Fiscal Year 2025/2026 Special Tax Roll

Tract	Lot	Assessor's Parcel Number	Maximum Special Tax	Assigned Special Tax
14275	239	306-321-54-00	\$3,921.04	\$3,921.04
14275	240	306-321-55-00	\$3,921.04	\$3,921.04
14275	241	306-321-56-00	\$3,921.04	\$3,921.04
14275	242	306-321-57-00	\$3,921.04	\$3,921.04
14275	243	306-321-58-00	\$3,921.04	\$3,921.04
14275	244	306-321-59-00	\$3,921.04	\$3,921.04
14275	K	306-321-60-00	\$0.00	\$0.00
14275	L	306-321-61-00	\$0.00	\$0.00
14275	J	306-322-01-00	\$0.00	\$0.00
14298	1	306-350-01-00	\$1,075.64	\$1,075.64
14298	2	306-350-02-00	\$954.54	\$954.54
14298	3	306-350-03-00	\$1,438.88	\$1,438.88
14298	4	306-350-04-00	\$1,438.88	\$1,438.88
14298	5	306-350-05-00	\$1,075.64	\$1,075.64
14298	6	306-350-06-00	\$954.54	\$954.54
14298	7	306-350-07-00	\$1,438.88	\$1,438.88
14298	8	306-350-08-00	\$1,438.88	\$1,438.88
14298	9	306-350-09-00	\$1,075.64	\$1,075.64
14298	10	306-350-10-00	\$954.54	\$954.54
14298	11	306-350-11-00	\$1,438.88	\$1,438.88
14298	12	306-350-12-00	\$1,438.88	\$1,438.88
14298	13	306-350-13-00	\$954.54	\$954.54
14298	14	306-350-14-00	\$1,075.64	\$1,075.64
14298	15	306-350-15-00	\$1,438.88	\$1,438.88
14298	16	306-350-16-00	\$1,438.88	\$1,438.88
14298	17	306-350-17-00	\$954.54	\$954.54
14298	49	306-350-18-00	\$1,438.88	\$1,438.88
14298	50	306-350-19-00	\$1,075.64	\$1,075.64
14298	51	306-350-20-00	\$954.54	\$954.54
14298	52	306-350-21-00	\$1,438.88	\$1,438.88
14298	53	306-350-22-00	\$1,438.88	\$1,438.88
14298	54	306-350-23-00	\$1,075.64	\$1,075.64
14298	55	306-350-24-00	\$954.54	\$954.54
14298	56	306-350-25-00	\$1,438.88	\$1,438.88
14298	57	306-350-26-00	\$1,438.88	\$1,438.88
14298	58	306-350-27-00	\$954.54	\$954.54
14298	59	306-350-28-00	\$1,075.64	\$1,075.64
14298	60	306-350-29-00	\$1,438.88	\$1,438.88
14298	61	306-350-30-00	\$1,438.88	\$1,438.88
14298	62	306-350-31-00	\$954.54	\$954.54
14298	63	306-350-32-00	\$1,075.64	\$1,075.64
14298	64	306-350-33-00	\$1,438.88	\$1,438.88

Poway Unified School District
Community Facilities District No. 10 Improvement Area A
Fiscal Year 2025/2026 Special Tax Roll

Tract	Lot	Assessor's Parcel Number	Maximum Special Tax	Assigned Special Tax
14298	65	306-350-34-00	\$1,438.88	\$1,438.88
14298	66	306-350-35-00	\$0.00	\$0.00
14298	67	306-350-36-00	\$0.00	\$0.00
14298	18	306-351-01-00	\$1,075.64	\$1,075.64
14298	19	306-351-02-00	\$1,438.88	\$1,438.88
14298	20	306-351-03-00	\$1,438.88	\$1,438.88
14298	21	306-351-04-00	\$954.54	\$954.54
14298	22	306-351-05-00	\$1,075.64	\$1,075.64
14298	23	306-351-06-00	\$1,438.88	\$1,438.88
14298	24	306-351-07-00	\$1,438.88	\$1,438.88
14298	25	306-351-08-00	\$954.54	\$954.54
14298	26	306-351-09-00	\$1,075.64	\$1,075.64
14298	27	306-351-10-00	\$1,438.88	\$1,438.88
14298	28	306-351-11-00	\$1,438.88	\$1,438.88
14298	29	306-351-12-00	\$1,438.88	\$1,438.88
14298	30	306-351-13-00	\$1,438.88	\$1,438.88
14298	31	306-351-14-00	\$1,075.64	\$1,075.64
14298	32	306-351-15-00	\$954.54	\$954.54
14298	33	306-351-16-00	\$1,438.88	\$1,438.88
14298	34	306-351-17-00	\$1,438.88	\$1,438.88
14298	35	306-351-18-00	\$1,438.88	\$1,438.88
14298	36	306-351-19-00	\$1,438.88	\$1,438.88
14298	37	306-351-20-00	\$1,438.88	\$1,438.88
14298	38	306-351-21-00	\$1,075.64	\$1,075.64
14298	39	306-351-22-00	\$954.54	\$954.54
14298	40	306-351-23-00	\$1,438.88	\$1,438.88
14298	41	306-351-24-00	\$1,075.64	\$1,075.64
14298	42	306-351-25-00	\$1,438.88	\$1,438.88
14298	43	306-351-26-00	\$1,438.88	\$1,438.88
14298	44	306-351-27-00	\$1,438.88	\$1,438.88
14298	45	306-351-28-00	\$1,438.88	\$1,438.88
14298	46	306-351-29-00	\$1,438.88	\$1,438.88
14298	47	306-351-30-00	\$954.54	\$954.54
14298	48	306-351-31-00	\$1,438.88	\$1,438.88
14298	68	306-351-32-00	\$0.00	\$0.00
14298	69	306-351-33-00	\$0.00	\$0.00
14298	70	306-351-34-00	\$0.00	\$0.00
14512	2	306-370-02-00	\$0.00	\$0.00
14512	3	306-370-03-00	\$0.00	\$0.00
14512	4	306-370-04-00	\$0.00	\$0.00
14512	5	306-370-05-00	\$0.00	\$0.00

Poway Unified School District
 Community Facilities District No. 10 Improvement Area A
 Fiscal Year 2025/2026 Special Tax Roll

Tract	Lot	Assessor's Parcel Number	Maximum Special Tax	Assigned Special Tax
14512	6	306-370-06-00	\$0.00	\$0.00

Total Parcels	420
Total Taxable Parcels	385
Total Assigned Special Tax	\$1,166,266.72