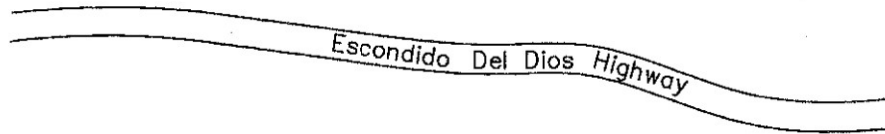


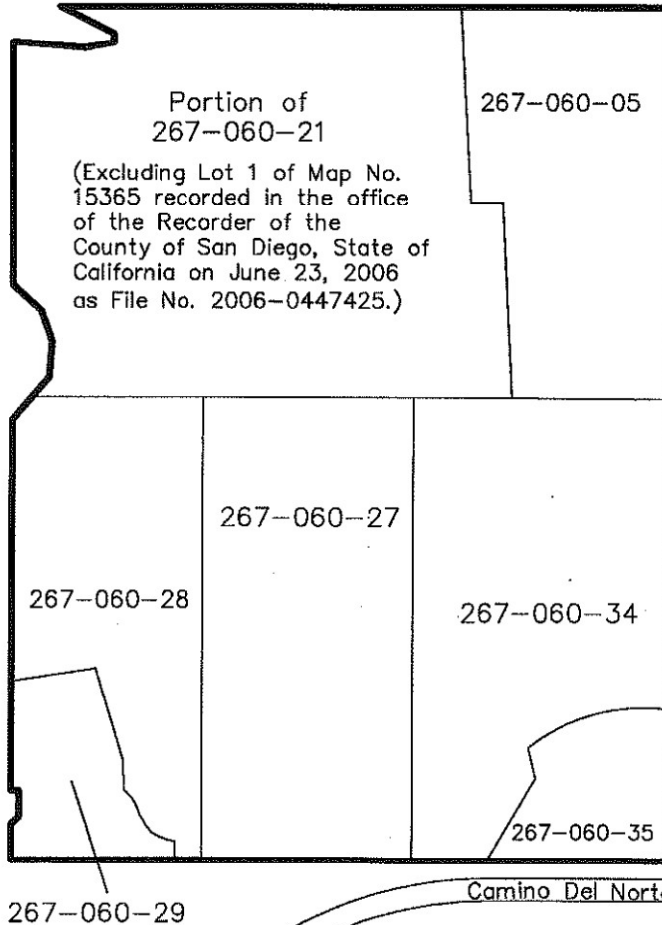
AMENDED BOUNDARIES OF  
POWAY UNIFIED SCHOOL DISTRICT  
COMMUNITY FACILITIES DISTRICT NO. 13  
SAN DIEGO COUNTY  
STATE OF CALIFORNIA

THE ORIGINAL OF THIS DOCUMENT  
WAS RECORDED ON MAR 15, 2007  
DOCUMENT NUMBER 2007-0176100  
GREGORY J. SMITH COUNTY RECORDER  
SAN DIEGO COUNTY RECORDERS OFFICE  
TIME: 9:45 AM

2007-0176100



Bing Crosby Blvd



(1) Filed in the office of the Secretary to the Board of Education this 12<sup>th</sup> day of March, 2007.

Secretary of the Board of Education

(2) I hereby certify that the within map showing the boundaries of Community Facilities District No. 13, San Diego County, State of California, was approved by the Board of Education of the Poway Unified School District <sup>th</sup> at a regular meeting thereof, held on this 12<sup>th</sup> day of March, 2007, by its Resolution No. 01-2007.

Secretary of the Board of Education

(3) Filed this 15<sup>th</sup> day of MARCH, 2007, at the hour of 9:45 o'clock A.m., in Book 41 of Maps of Assessment and Community Facilities Districts at page 22 and as Instrument No. 2007-0176100, in the office of the County Recorder of San Diego County, State of California.

County Recorder of San Diego County

This map amends the Boundary Map for Poway Unified School District Community Facilities District No. 13 previously recorded at Book 41 of Maps of Assessment and Community Facilities District at Page 9, as Document No. 2007-0039029, in the Office of the County Recorder for the County of San Diego, State of California.

Reference is hereby made to the Assessor maps of the County of San Diego for an exact description of the lines and dimensions of each lot and parcel.

LEGEND

	Boundaries of Community Facilities District No. 13
	Assessor's Parcel Line
	San Diego County Assessor's Parcel Number

PREPARED BY  
DOLINKA GROUP, INC.

BOOK 41 PAGE 22