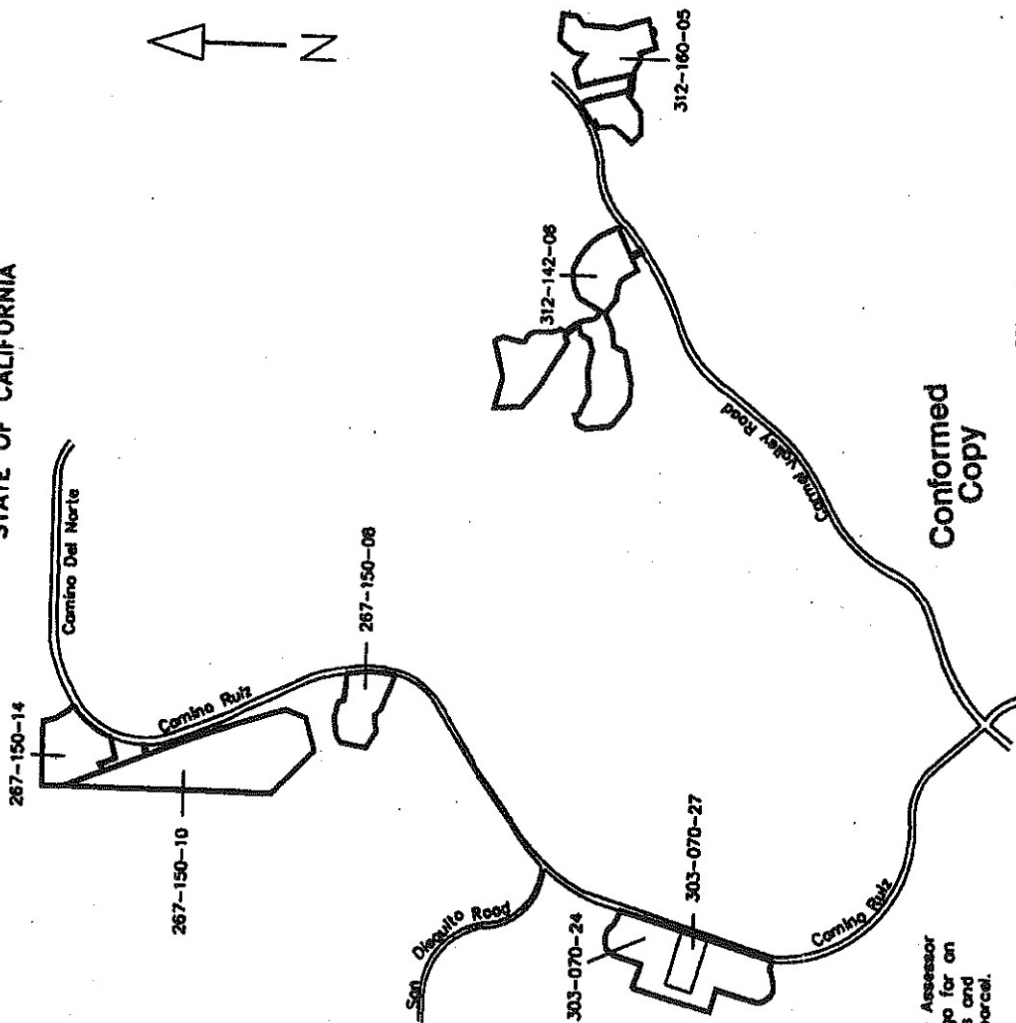


**PROPOSED BOUNDARIES OF
POWAY UNIFIED SCHOOL DISTRICT
COMMUNITY FACILITIES DISTRICT NO. 12
SAN DIEGO COUNTY
STATE OF CALIFORNIA**



Reference is hereby made to the Assessor maps of the County of San Diego for an exact description of the lines and dimensions of each lot and parcel.

Conformed Copy

PREPARED BY
DAVID TAUSSIG & ASSOCIATES, INC.

BK36P623

2002-0457991

(1) Filed in the office of the Secretary to the Board of Education this 29th day of May, 2002.
[Signature]
Secretary of the Board of Education

(2) I hereby certify that the within map showing the boundaries of Community Facilities District No. 12, San Diego County, State of California, was approved by the Board of Education at a special meeting thereof, held on this 28th day of May, 2002, by its Resolution No. SA-2002.
[Signature]
Secretary of the Board of Education

(3) Filed this 30th day of May, 2002, at the hour of 1:31 o'clock A.M., in Book 26 of Maps of Assessment and Community Facilities Districts of page 23, and as Instrument No. 200-0457991 in the office of the County Recorder of San Diego County, State of California.
[Signature]
County Recorder of San Diego County

LEGEND

	Proposed Boundaries of Community Facilities District No. 12
	Assessor Parcel Number