

ANNEXATION MAP No. 1
POWAY UNIFIED SCHOOL DISTRICT
COMMUNITY FACILITIES DISTRICT NO. 8
(BLACK MOUNTAIN RANCH PHASE II)
SAN DIEGO COUNTY
STATE OF CALIFORNIA

(1) Filed in the office of the Secretary to the Board of Education this 17th day of MAY, 1999.

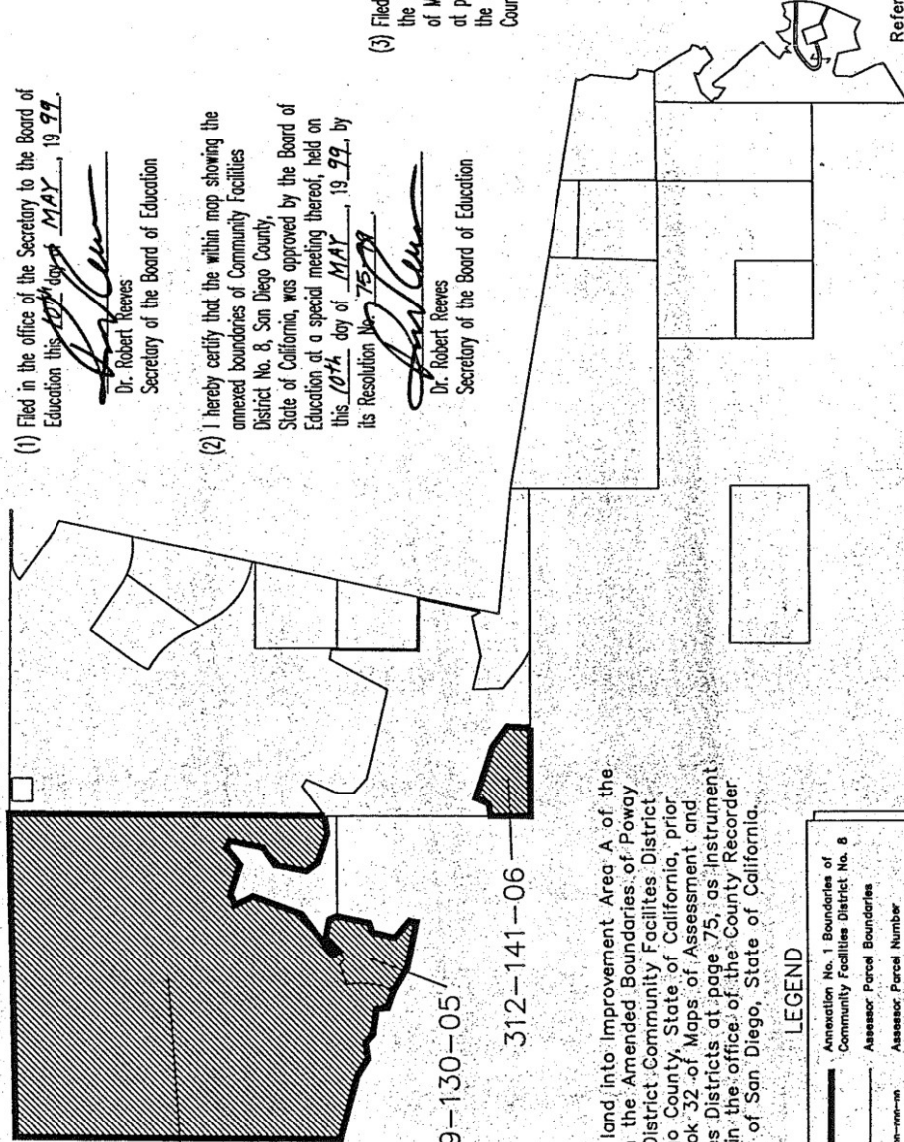
Dr. Robert Reeves
Dr. Robert Reeves
Secretary of the Board of Education

(2) I hereby certify that the within map showing the annexed boundaries of Community Facilities District No. 8, San Diego County, State of California, was approved by the Board of Education at a special meeting thereof, held on this 10th day of MAY, 1999, by its Resolution No. 7599.

Dr. Robert Reeves
Dr. Robert Reeves
Secretary of the Board of Education

(3) Filed this 17 day of MAY, 1999, at the hour of 2:45 o'clock A.M., in Book 33 of Maps of Assessment and Community Facilities Districts at page 23 and as Instrument No. 99-32499 in the office of the County Recorder of San Diego County, State of California.

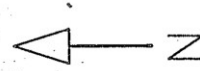
M. Meyer
County Recorder of San Diego County



This map annexes land into Improvement Area A of the district shown on the Amended Boundaries of Poway Unified School District Community Facilities District No. 8, San Diego County, State of California, prior recorded at Book 32 of Maps of Assessment and Community Facilities Districts at page 75, as Instrument No. 98-839979, in the office of the County Recorder for the County of San Diego, State of California.

LEGEND

	Annexation No. 1 Boundaries of Community Facilities District No. 8
	Assessor Parcel Boundaries
	Assessor Parcel Number
	Improvement Area A



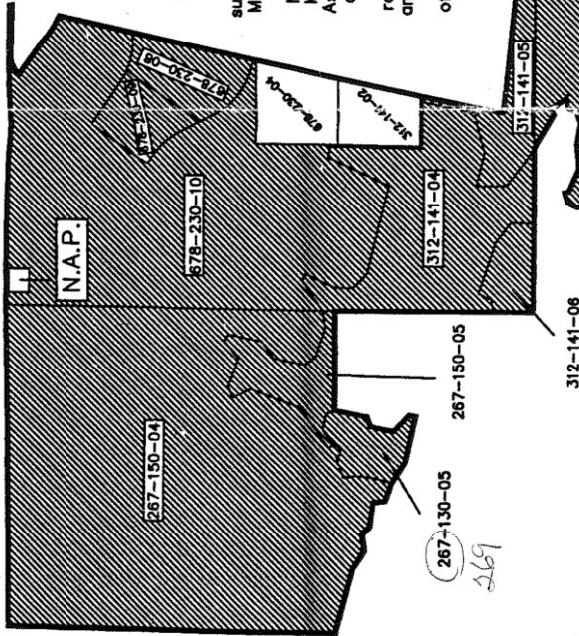
Reference is hereby made to the Assessor maps of the County of San Diego for an exact description of the lines and dimensions of each lot and parcel.

PREPARED BY
DAVID TAUSSIG & ASSOCIATES, INC.

BK 33 PG 23

1999-332495

AMENDED BOUNDARIES
POWAY UNIFIED SCHOOL DISTRICT
COMMUNITY FACILITIES DISTRICT NO. 8
(BLACK MOUNTAIN RANCH PHASE II)
SAN DIEGO COUNTY
STATE OF CALIFORNIA



Pursuant to Streets and Highways Code Section 3113.5, this map shows the consolidated boundaries of Poway Unified School District Community Facilities District No. 8, San Diego County (Black Mountain Ranch Phase II), State of California, and supersedes maps prior recorded at Book 32 of Maps of Assessment and Community Facilities Districts at page 75, as Document No. 98-839978, as amended by Annexation Map No. 1 recorded at Book 33 of Maps of Assessment and Community Facilities Districts at page 23, as Instrument No. 99-332495, as amended by Annexation Map No. 2 recorded at Book 34 of Maps of Assessment and Community Facilities Districts at page 57, as Instrument No. 2000-503592, in the office of the County Recorder for the County of San Diego, State of California.

(1) Filed in the office of the Secretary to the Board of Education this 13th day of November, 2000.

Robert Reeves
 Dr. Robert Reeves
 Secretary of the Board of Education

(2) I hereby certify that the within map showing the amended boundaries of Community Facilities District No. 8, San Diego County, State of California, was approved by the Board of Education at a special meeting thereof, held on this 13th day of November, 2000, by its Resolution No. 25-7991.

Robert Reeves
 Dr. Robert Reeves
 Secretary of the Board of Education

Conformed Copy

(3) Filed this 17th day of November, 2000, at the hour of 11:30 o'clock A.M., in Book 34 of Maps of Assessment and Community Facilities Districts at page 174 and as Instrument No. 2000-503592 in the office of the County Recorder of San Diego County, State of California.

Cynthia J. Felton
 County Recorder of San Diego County

303-070-07	303-070-08	303-070-09	303-070-10	303-070-11	303-070-12
------------	------------	------------	------------	------------	------------

LEGEND

	Proposed Boundaries of Community Facilities District No. 8
	Assessor Parcel Boundaries
	Assessor Parcel Number
	Improvement Area A
	Improvement Area B

Reference is hereby made to the Assessor maps of the County of San Diego for an exact description of the lines and dimensions of each lot and parcel.

PREPARED BY
 DAVID TAUSSIG & ASSOCIATES, INC.