



# Community Facilities District No. 2019-2 Annual Special Tax Report

*Fiscal Year Ending June 30, 2024*

# Moreno Valley Unified School District



2024 / 2025



A division of California Financial Services

## **District Administration**

Dr. Alejandro Ruvalcaba, Superintendent of Schools  
Susana Lopez, Chief Business Official, Business Services  
Moreno Valley Unified School District  
25634 Alessandro Boulevard  
Moreno Valley, CA 92553  
T. (951) 571-7500

## **Fiscal Agent**

U.S. Bank National Association  
633 West Fifth Street, 24<sup>th</sup> Floor  
Los Angeles, CA 90071  
T. (213) 615-6002

## **Special Tax Administrator**

KeyAnalytics  
555 Corporate Drive, Suite 100  
Ladera Ranch, CA 92694  
T. (949) 282-1077

Special Assessment Questions  
T. (877) 575-0265  
[propertytax@calschools.com](mailto:propertytax@calschools.com)

## **Bond Counsel**

Atkinson, Andelson, Loya, Rudd & Romo  
20 Pacifica, Suite 1100  
Irvine, CA 92618  
T. (949) 453-4260

# Table of Contents

<b>Introduction</b>	<b>1</b>
<b>I. CFD Background</b>	<b>3</b>
A. Location	3
B. Formation	3
C. Bonds	5
<b>II. Fiscal Year 2023/2024 Annual Special Tax</b>	<b>6</b>
A. Special Tax Levy	6
B. Annual Special Tax Collections and Delinquencies	7
<b>III. Fund and Account Activity and Balances</b>	<b>8</b>
A. Fiscal Agent Accounts	8
B. Sources and Uses of Funds	9
<b>IV. Senate Bill 165</b>	<b>10</b>
A. Authorized Facilities	10
B. Series 2022 Special Tax Bonds	13
C. Special Taxes	15
<b>V. Special Tax Requirement</b>	<b>16</b>
A. Special Tax Requirement	16
B. Administrative Expense Budget	17
<b>VI. Special Tax Classification</b>	<b>18</b>
A. Developed Property	18
<b>VII. Fiscal Year 2024/2025 Special Tax Levy</b>	<b>20</b>

Exhibit A – Rate and Method of Apportionment

Exhibit B – CFD Boundary Map

Exhibit C – Assessor’s Parcel Maps

Exhibit D – Series 2022 Special Tax Bonds Debt Service Schedule

Exhibit E – Delinquent Annual Special Tax Report

Exhibit F – Summary of Transactions for Fiscal Agent Accounts

Exhibit G – Annual Special Tax Roll for Fiscal Year 2024/2025

# Introduction

Community Facilities District No. 2019-2 (“CFD No. 2019-2”) of the Moreno Valley Unified School District (the “School District”) was formed pursuant to the terms and provisions of the “Mello-Roos Community Facilities Act of 1982”, as amended (the “Act”), being Chapter 2.5, Part 1, Division 2, Title 5 of the Government Code of the State of California. CFD No. 2019-2 is authorized under the Act to finance certain facilities (the “Authorized Facilities”) as established at the time of formation.

This Annual Special Tax Report (the “Report”) summarizes certain general and administrative information and analyzes the financial obligations of CFD No. 2019-2 for the purpose of establishing the Annual Special Tax Levy for Fiscal Year 2024/2025. The Annual Special Tax Levy is calculated pursuant to the Rate and Method of Apportionment (the “RMA”) which is attached to this Report as Exhibit A.

All capitalized terms not defined herein are used as defined in the RMA and/or Fiscal Agent Agreement (“FAA”), dated June 1, 2022 between the School District and U.S. Bank, NA acting as Fiscal Agent (the “Fiscal Agent”).

This Report is organized into the following Sections:

## **Section I – CFD Background**

Section I provides background information relating to the formation of CFD No. 2019-2 and the long-term obligations issued to finance the Authorized Facilities.

## **Section II – Fiscal Year 2023/2024 Special Tax Levy**

Section II provides information regarding the levy and collection of Special Taxes for Fiscal Year 2023/2024 and an accounting of the remaining collections.

## **Section III – Fund and Account Balances**

Section III examines the financial activity within the funds and accounts associated with CFD No. 2019-2.

## **Section IV – Senate Bill 165**

Section IV provides information required under Senate Bill 165 (“SB 165”) regarding the initial allocation of bond proceeds and the expenditure of the Annual Special Taxes and bond proceeds utilized to fund the Authorized Facilities of CFD No. 2019-2 for Fiscal Year 2023/2024.

## **Section V – Special Tax Requirement**

Section V calculates the Special Tax Requirement based on the obligations of CFD No. 2019-2 for Fiscal Year 2024/2025.

## **Section VI – Special Tax Classification**

Section VI provides updated information regarding the Special Tax classification of parcels within CFD No. 2019-2.

## **Section VII – Fiscal Year 2024/2025 Special Tax Levy**

Section VII provides the Fiscal Year 2024/2025 Special Tax levy based on updated Special Tax classifications and the Special Tax Requirement.

# I. CFD Background

This Section provides background information regarding the formation of CFD No. 2019-2 and the bonds issued to fund the Authorized Facilities.

## A. Location

CFD No. 2019-2 is located at the northeast corner of Cactus Ave and Perris Boulevard within the City of Moreno Valley (the “City”). For reference, the boundary map of CFD No. 2019-2 is included as Exhibit B and the current Assessor’s Parcel maps are included as Exhibit C.

## B. Formation

CFD No. 2019-2 was formed and established by the School District on November 12, 2019, under the Act, following a public hearing conducted by the Board of Education of the School District (the “Board”), as legislative body of CFD No. 2019-2, and a landowner election at which the qualified electors of CFD No. 2019-2 authorized CFD No. 2019-2 to incur bonded indebtedness in an amount not to exceed \$6,500,000 and approved the levy of Annual Special Taxes.

CFD No. 2019-2 was also formed in connection with the School Facilities Funding and Mitigation Agreement, dated November 12, 2019 (the “Mitigation Agreement”), by and between the School District and Perris-Cactus Development, LLC (“Developer”). Additionally, CFD No. CFD No. 2019-2 may finance the acquisition or construction of certain water and sewer facilities and improvements to be owned and operated by the Eastern Municipal Water District (“EMWD”), in accordance with a Joint Community Facilities Agreement by and among the School District, the Developer and EMWD.

The table below provides information related to the formation of CFD No. 2019-2.

**Board Actions Related to  
Formation of CFD No. 2019-2**

Resolution	Board Meeting Date	Resolution No.
Resolution of Intention	October 8, 2019	2019-20-15
Resolution to Incur Bonded Indebtedness	October 8, 2019	2019-20-16
Resolution of Formation	November 12, 2019	2019-20-24
Resolution of Necessity to Incur Bond Indebtedness	November 12, 2019	2019-20-25
Resolution Calling Election	November 12, 2019	2019-20-26
Ordinance Levying Special Taxes	January 21, 2021	2019-20-27

A Notice of Special Tax Lien was recorded in the real property records of the County of Riverside (“County”) on November 19, 2019, as Instrument No. 2019-0477804 on all property within CFD No. 2019-2.

## **C. Bonds**

### **Series 2022 Special Tax Bonds**

On June 9, 2022 the Series 2022 Special Tax Bonds of the Moreno Valley Unified School District Community Facilities District No. 2019-2 (“2022 Bonds”) were issued in the amount of \$4,955,000. The 2022 Bonds were authorized and issued under and subject to the terms of the Fiscal Agent Agreement, dated June 1, 2022 (“FAA”), and the Act. The 2022 Bonds were issued to finance directly or indirectly certain school, water, and sewer facilities of benefit to CFD No. 2019-2, fund a reserve fund securing the 2022 Bonds, and pay the costs of issuance of the 2022 Bonds. For more information regarding the use of the 2022 Bond proceeds and the Authorized Facilities constructed please see Section IV of this Report.

## II. Fiscal Year 2023/2024 Annual Special Tax

Each Fiscal Year, CFD No. 2019-2 levies and collects Annual Special Taxes pursuant to the RMA in order to meet the obligation for that Fiscal Year. This Section provides a summary of the levy and collection of Annual Special Taxes in Fiscal Year 2023/2024.

### A. Special Tax Levy

The Special Tax levy for Fiscal Year 2023/2024 is summarized by Special Tax classification in the table below.

#### Fiscal Year 2023/2024 Annual Special Tax Levy

Tax Class/Land Use	Sq. Footage	Number of Units/Acres	Assigned Annual Special Tax Rate	Total Assigned Annual Special Taxes
1 - Residential Property	1,700 Sq. Ft. or Less	14 Units	\$2,262.64 Per Unit	\$31,676.96
2 - Residential Property	1,701 Sq. Ft. to 1,900 Sq. Ft.	0 Units	\$2,365.68 Per Unit	0.00
3 - Residential Property	1,901 Sq. Ft. to 2,100 Sq. Ft.	0 Units	\$2,459.28 Per Unit	0.00
4 - Residential Property	2,101 Sq. Ft. to 2,300 Sq. Ft.	21 Units	\$2,608.92 Per Unit	54,787.32
5 - Residential Property	2,301 Sq. Ft. to 2,500 Sq. Ft.	58 Units	\$2,674.44 Per Unit	155,117.52
6 - Residential Property	Greater than 2,500 Sq. Ft.	24 Units	\$2,852.28 Per Unit	68,454.72
<b>Subtotal Residential Property</b>		<b>117 Units</b>		<b>\$310,036.52</b>
Undeveloped Property <sup>[1]</sup>	N/A	0.00 Acres	\$0.00 Per Acre	0.00
<b>Total</b>		<b>117 Units</b>		<b>\$310,036.52</b>

[1] Undeveloped Properties and Provisional Undeveloped Properties are levied at \$0.00 per Acre due to sufficient Special Tax Levy coverage from Residential Property. The Assigned Annual Special Tax Rate per the RMA is \$36,030.41 per Acre.

## B. Annual Special Tax Collections and Delinquencies

Delinquent Annual Special Taxes for CFD No. 2019-2, as of June 30, 2024, for Fiscal Year 2023/2024 are summarized in the table below. Based on the Foreclosure Covenant outlined in the FAA and the current delinquency rates, no parcel exceeds the foreclosure threshold. A detailed listing of the Fiscal Year 2023/2024 Delinquent Annual Special Taxes, based on the year end collections and information regarding the Foreclosure Covenants is provided as Exhibit E.

### CFD No. 2019-2 Annual Special Tax Collections and Delinquencies

Fiscal Year	Subject Fiscal Year				June 30, 2024		
	Aggregate Special Tax	Parcels Delinquent	Amount Collected	Amount Delinquent	Delinquency Rate	Remaining Amount Delinquent	Remaining Delinquency Rate
2021/2022	\$129,951.24	0	\$129,951.24	\$0.00	0.00%	\$0.00	0.00%
2022/2023	303,957.46	2	300,024.46	3,933.00	1.29%	1,311.00	0.43%
2023/2024	310,036.52	3	302,013.20	8,023.32	2.59%	8,023.32	2.59%

# III. Fund and Account Activity and Balances

Special Taxes are collected by the County Tax Collector as part of the regular property tax bills. Once received by the County Tax Collector the Special Taxes are transferred to the School District where they are then deposited into the Special Tax Fund held with the Fiscal Agent. Special Taxes are periodically transferred to make debt service payments on the 2022 Bonds and pay other authorized costs. This Section summarizes the account activity and balances of the funds and accounts associated with CFD No. 2019-2.

## A. Fiscal Agent Accounts

Funds and accounts associated with the 2022 Bonds are currently being held by the Fiscal Agent. These funds and accounts were established pursuant to the FAA.

The balances, as of June 30, 2024, of the funds, accounts and subaccounts by the Fiscal Agent are listed in the table on the following page. Exhibit F contains a detailed listing of the transactions within these funds for Fiscal Year 2023/2024.

**Fund and Account Balances  
as of June 30, 2024**

Account Name	Account Number	Balance
Special Tax Fund	230993000	\$181,212.89
Bond Fund	230993001	16,799.35
Reserve Fund	230993002	426,462.39
Administrative Expense Fund	230993003	15,988.15
School Facilities Fund	230993004	962,699.23
EMWD Facilities Fund	230993005	3,597.88
Residual Fund	230993007	90,137.53
Cost of Issuance Fund	230993008	0.00
<b>Total</b>		<b>\$1,696,897.42</b>

## B. Sources and Uses of Funds

The sources and uses of funds collected and expended by CFD No. 2019-2 are limited based on the restrictions as described within the FAA. The table below presents the sources and uses of all funds and accounts for CFD No. 2019-2 from July 1, 2023, through June 30, 2024. For a more detailed description of the sources and uses of funds please refer to Section 4 of the FAA.

### Fiscal Year 2023/2024 Sources and Uses of Funds

Sources	
Bond Proceeds	0.00
Annual Special Tax Receipts	296,857.85
Investment Earnings	72,795.59
<b>Total</b>	<b>\$369,653.44</b>
Uses	
Interest Payments	(\$231,381.26)
Principal Payments	(15,000.00)
Authorized Facilities	0.00
Administrative Expenses	(26,626.27)
<b>Total</b>	<b>(\$273,007.53)</b>

## IV. Senate Bill 165

Senate Bill 165, or the Local Agency Special Tax and Bond Accountability Act (“SB 165”), requires any local special tax/local bond measure subject to voter approval contain a statement indicating the specific purposes of the Special Tax, require that the proceeds of the Special Tax be applied to those purposes, require the creation of an account into which the proceeds shall be deposited, and require an annual report containing specified information concerning the use of the proceeds. SB 165 only applies to CFDs authorized on or after January 1, 2001 in accordance with Sections 50075.1 and 53410 of the California Government Code.

### A. Authorized Facilities

#### 1. School Facilities

School Facilities includes, but not by way of limitation, of the planning, engineering, design, acquisition, construction, lease, improvement, and/or financing of interim and permanent facilities, including classrooms, multi-purpose facilities, administration and auxiliary space at school facilities as reasonably determined from time to time by the School District to be necessary to accommodate the student population to be generated as a result of development, including the property within CFD No. 2019-2, during the term of the special taxes as follows:

- a) K-12 school sites and facilities, including lease rental payments therefore related to the acquisition of land, or interests in land required for the construction of such on-site or off-site facilities, including, but not limited to, buildings, appurtenances, athletic fields, playgrounds and recreational facilities and improvements thereto, landscaping, access roadways, drainage, sidewalks and gutters and utility lines, as well as portable or relocatable buildings or interim additions to existing buildings at such school facilities.

- b) Modernization, rehabilitation, relocation and expansion of existing school facilities and related infrastructure.
- c) Central support, administrative facilities, special education facilities and transportation facilities, including, but not by way of limitation, buses and vehicles.
- d) Furniture, equipment and technology, including technology upgrades and mobile devices and infrastructure therefore, with a useful life of at least five (5) years at such school facilities.
- e) The costs attributable to planning, engineering, designing, leasing, financing, acquiring, expanding, relocating, rehabilitating, or constructing (or any combination thereof) of school facilities (including, without limitation, construction management, inspection, materials testing, and construction staking); any “debt,” as defined in Government Code Section 53317(d), the costs to issue and sell any such debt (including, without limitation, underwriters discount, appraisals, market studies, reserve fund, capitalized interest, bond counsel, special tax consultant, bond trustee or fiscal agent, bond and official statement printing, and administrative expenses of the School District and/or CFD No. 2019-2), and all other incidental expenses.

The School Facilities shall be constructed, whether or not acquired in their completed states, pursuant to plans and/or specifications approved by the School District. The School Facilities described are representative of the types of improvements to be funded or financed by CFD No. 2019-2. Addition, deletion or modification of School Facilities may be made consistent with the requirements of the School District, CFD No. 2019-2, and the Mello-Roos Act.

## **2. Water and Sewer Facilities**

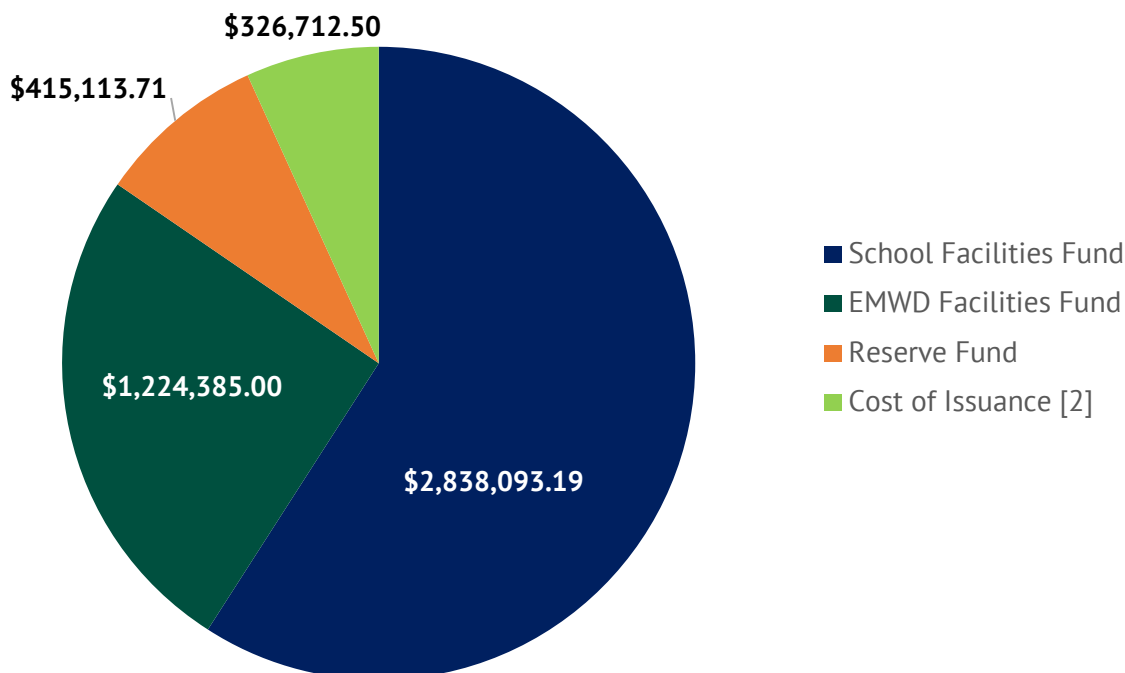
“EMWD Facilities” consist of water and sewer facilities may include water and sewer facilities to be owned and operated by EMWD (collectively, the “EMWD Facilities”). EMWD Facilities consist of water and sewer facilities including the acquisition of capacity in the sewer system and/or water system of Eastern Municipal Water District, and all appurtenances and appurtenant work in connection with the foregoing, including the cost of engineering, planning, designing, materials testing, coordination, construction staking, construction management and supervision for such EMWD Facilities and any other expense incidental to the construction, acquisition, modification, expansion or rehabilitation of such EMWD facilities. The EMWD Facilities listed herein are representative of the types of improvements authorized to be financed by CFD No. 2019-2. Detailed scope and limits of specific projects will be determined as appropriate, consistent with the standards of the Eastern Municipal Water District. Addition, deletion, or modification of descriptions of the EMWD Facilities may be made consistent with the requirements of the Board of Directors of Eastern Municipal Water District, the CFD No. 2019-2 and the Act.

## B. Series 2022 Special Tax Bonds

### 1. Bond Proceeds

In accordance with the FAA, the total 2022 Bond proceeds of \$4,955,000 less \$150,695.60 in Net Original Issue Discount were deposited into the funds and accounts as shown in the graph below.

**2022 Bond Proceeds**



[1] The total above equals \$4,804,304.40, which includes the Net Original Issue Discount of \$150,695.60.

[2] This amount includes the Underwriter's Discount of \$86,712.50. The actual amount deposited into the Cost of Issuance Account was \$240,000.

## 2. Construction Funds and Accounts

The construction funds generated for school facilities from the issuance of the 2022 Bonds have been deposited into the School Facilities Account of the Construction Fund. The table below summarizes the accruals and expenditures within the School Facilities Account since the issuance of the 2022 Bonds.

### School Facilities Account of the Construction Fund

<b>Balance as of July 1, 2023</b>		<b>\$918,006.48</b>
Accruals		\$44,692.75
Investment Earnings	\$44,692.75	
Expenditures		\$0.00
<b>Balance as of June 30, 2024</b>		<b>\$962,699.23</b>

The construction funds generated for EMWD facilities from the issuance of the 2022 Bonds have been deposited into the EMWD Facilities Account of the Construction Fund. The table below summarizes the accruals and expenditures within the EMWD Facilities Fund since the issuance of the 2022 Bonds.

### EMWD Facilities Account of the Construction Fund

<b>Balance as of July 1, 2023</b>		<b>\$3,430.84</b>
Accruals		\$167.04
Investment Earnings	\$167.04	
Expenditures		\$0.00
<b>Balance as of June 30, 2024</b>		<b>\$3,597.88</b>

## C. Special Taxes

CFD No. 2019-2 has covenanted to levy the Annual Special Taxes in accordance with the RMA. The Annual Special Taxes collected can only be used for the purposes as outlined in the FAA. The table below presents a detailed accounting of the Annual Special Taxes collected and expended by CFD No. 2019-2 within the Special Tax Fund created under the FAA.

### Special Tax Fund

<b>Balance as of July 1, 2023</b>		<b>\$179,709.64</b>
Accruals		\$299,355.34
Special Tax Deposits	\$296,857.85	
Investment Earnings	2,497.49	
Expenditures		(\$297,852.09)
Transfer to Residual Fund	(\$53,485.39)	
Transfer to Bond Fund	(241,616.70)	
Administrative Expenses	(2,750.00)	
<b>Balance as of June 30, 2024</b>		<b>\$181,212.89</b>

Pursuant to the FAA, any remaining funds in the Special Tax fund at the end of the Bond Year, which are not required to cure a delinquency in the payment of principal or interest on the Bonds, restore the Reserve Fund or pay current or pending Administrative Expenses shall be transferred to the Residual Fund. Funds within the Residual Fund may be used for Authorized Facilities.

### Residual Fund

<b>Balance as of July 1, 2023</b>		<b>\$47,834.52</b>
Accruals		\$57,303.01
Transfer from Special Tax Fund	\$53,485.39	
Investment Earnings	3,817.62	
Expenditures		(\$15,000.00)
Transfer to Administrative Expense Fund	(\$15,000.00)	
<b>Balance as of June 30, 2024</b>		<b>\$90,137.53</b>

# V. Special Tax Requirement

This Section outlines the calculation of the Special Tax Requirement of CFD No. 2019-2 based on the financial obligations for Fiscal Year 2024/2025.

## A. Special Tax Requirement

The Annual Special Taxes of CFD No. 2019-2 are calculated in accordance and pursuant to the RMA. Any amounts not required to pay Administrative Expenses and Debt Service on the 2022 Bonds may be used to purchase/construct the Authorized Facilities of CFD No. 2019-2. The table below shows the calculation of the Special Tax Requirement for Fiscal Year 2024/2025.

### Special Tax Requirement for CFD No. 2019-2

<b>Fiscal Year 2023/2024 Remaining Sources</b>		<b>\$203,167.59</b>
Balance of Special Tax Fund	\$181,212.89	
Balance of Bond Fund	16,799.35	
Anticipated Special Taxes	5,155.35	
<b>Fiscal Year 2023/2024 Remaining Obligations</b>		<b>(\$203,167.59)</b>
September 1, 2024 Principal Payment	(\$20,000.00)	
September 1, 2024 Interest Payment	(115,540.63)	
Administrative Expense Budget	(31,212.00)	
Direct Construction of Authorized Facilities	(36,414.96)	
<b>Fiscal Year 2023/2024 Surplus (Reserve Fund Draw)</b>		<b>\$0.00</b>
<b>Fiscal Year 2024/2025 Obligations</b>		<b>(\$316,237.90)</b>
Administrative Expense Budget	(\$32,472.96)	
Anticipated Special Tax Delinquencies <sup>[1]</sup>	(8,183.80)	
March 1, 2025 Interest Payment	(115,140.63)	
September 1, 2025 Interest Payment	(115,140.63)	
September 1, 2025 Principal Payment	(25,000.00)	
Direct Construction of Authorized Facilities	(20,299.87)	
<b>Fiscal Year 2024/2025 Special Tax Requirement</b>		<b>\$316,237.90</b>

[1] Assumes the Year End Fiscal Year 2023/2024 delinquency rate of 2.59%.

## B. Administrative Expense Budget

Each year a portion of the Annual Special Tax levy is used to pay for the administrative expenses incurred by the School District to levy the Annual Special Tax and administer the debt issued to financed Authorized Facilities. The estimated Fiscal Year 2024/2025 Administrative Expenses are shown in the table below.

### Fiscal Year 2024/2025 Budgeted Administrative Expenses

Administrative Expense	Budget
District Staff and Expenses	\$19,381.07
Consultant/Trustee Expenses	12,000.00
County Tax Collection Fees	91.89
Contingency for Legal	1,000.00
<b>Total Expenses</b>	<b>\$32,472.96</b>

# VI. Special Tax Classification

Each Fiscal Year, parcels within CFD No. 2019-2 are assigned an Annual Special Tax classification based on the parameters outlined in the RMA. This Section outlines how parcels are classified and the amount of Taxable Property within CFD No. 2019-2.

## A. Developed Property

Pursuant to the RMA, a parcel is considered to be classified as Developed Property once a Building Permit is issued on or prior to May 1<sup>st</sup> of the prior Fiscal Year. The table below summarizes the number of parcels with Building Permits issued and the fiscal year those parcels were initially classified as Developed Property.

**Summary of Parcels  
Classified as Developed Property  
Fiscal Year 2024/2025**

<b>Initial Tax Year</b>	<b>Land Use</b>	<b>Number of Units</b>
2021/2022	Residential Property	50
2022/2023	Residential Property	67
<b>Total</b>		<b>117</b>

Building Permits have been issued for all 117 Units by the City within CFD No. 2019-2. According to the Riverside County Assessor, all property zoned for residential development within CFD No. 2019-2 has been built and completed. The table below summarizes the Special Tax classification for the Units within CFD No. 2019-2.

**Fiscal Year 2024/2025  
Special Tax Classification**

<b>Tax Class</b>	<b>Land Use</b>	<b>Number of Units/Acres</b>
1	Residential Property	14 Units
2	Residential Property	0 Units
3	Residential Property	0 Units
4	Residential Property	21 Units
5	Residential Property	58 Units
<i>Subtotal Residential Property</i>		<i>117 Units</i>
6	Non-Residential Property	0.00 Acres
<i>Subtotal Non- Residential Property</i>		<i>0.00 Acres</i>
Undeveloped Property		N/A
<i>Subtotal Undeveloped Property</i>		<i>N/A</i>
<b>Total</b>		<b>117 Units</b>

# VII. Fiscal Year 2024/2025 Special Tax Levy

Each Fiscal Year, the Special Tax is levied up to the maximum rate, as determined by the provisions of the RMA, in the amount needed to satisfy the Special Tax Requirement.

Based on the Special Tax Requirement listed in Section IV, CFD No. 2019-2 will levy at the Assigned Annual Special Tax rate allowable for each parcel classified as Developed Property. The Assigned Annual Special Tax rate escalates annually by 2%. The special tax roll, containing a listing of each parcel’s Assigned Special Tax and Maximum Special Tax, calculated pursuant to the RMA, can be found attached as Exhibit D.

A summary of the Annual Special Tax levy for Fiscal Year 2024/2025 by Special Tax classification as determined by the RMA for CFD No. 2019-2 can be found in the table below.

## Fiscal Year 2024/2025 Annual Special Tax Levy

Tax Class/Land Use	Sq. Footage	Number of Units/Acres	Assigned Annual Special Tax Rate	Total Assigned Annual Special Taxes
1 - Residential Property	1,700 Sq. Ft. or Less	14 Units	\$2,307.90 Per Unit	\$32,310.60
2 - Residential Property	1,701 Sq. Ft. to 1,900 Sq. Ft.	0 Units	\$2,413.00 Per Unit	0.00
3 - Residential Property	1,901 Sq. Ft. to 2,100 Sq. Ft.	0 Units	\$2,508.46 Per Unit	0.00
4 - Residential Property	2,101 Sq. Ft. to 2,300 Sq. Ft.	21 Units	\$2,661.10 Per Unit	55,883.10
5 - Residential Property	2,301 Sq. Ft. to 2,500 Sq. Ft.	58 Units	\$2,727.94 Per Unit	158,220.52
6 - Residential Property	Greater than 2,500 Sq. Ft.	24 Units	\$2,909.32 Per Unit	69,823.68
<b>Subtotal Residential Property</b>		<b>117 Units</b>		<b>\$316,237.90</b>
Undeveloped Property <sup>[1]</sup>	N/A	0.00 Acres	\$0.00 Per Acre	0.00
<b>Total</b>		<b>117 Units</b>		<b>\$316,237.90</b>

[1] Undeveloped Properties and Provisional Undeveloped Properties are levied at \$0.00 per Acre due to sufficient Special Tax Levy coverage from Residential Property. The Assigned Annual Special Tax Rate per the RMA is \$36,751.02 per Acre.

[https://calschools.sharepoint.com/cfs/unregulated/moreno\\_valley/developer\\_revenue/cfd\\_admin/cfd\\_no.2019-2/fy\\_2024-25/moreno\\_valley\\_usd\\_cfd2019-2fy20242025\\_specialtaxreport\\_d1.docx](https://calschools.sharepoint.com/cfs/unregulated/moreno_valley/developer_revenue/cfd_admin/cfd_no.2019-2/fy_2024-25/moreno_valley_usd_cfd2019-2fy20242025_specialtaxreport_d1.docx)

# **Exhibit A**

## **Rate and Method of Apportionment**

# **RATE AND METHOD OF APPORTIONMENT OF SPECIAL TAXES OF COMMUNITY FACILITIES DISTRICT NO. 2019-2 OF THE MORENO VALLEY UNIFIED SCHOOL DISTRICT**

A Special Tax shall be levied on and collected from all Assessor's Parcels in Community Facilities District No. 2019-2 of the Moreno Valley Unified School District each Fiscal Year commencing in Fiscal Year 2020/2021, in an amount determined by the Board through the application of the Rate and Method of Apportionment of Special Taxes ("RMA") described below. All the real property within the District, unless exempted by law or by provisions hereof, shall be taxed for the purposes, to the extent and in the manner herein provided.

## **SECTION A DEFINITIONS**

For purposes of this RMA, the terms hereinafter set forth have the following meanings:

**"Acreage"** means the number of acres of land area of an Assessor's Parcel as shown on an Assessor's Parcel Map, or if the land area is not shown on an Assessor's Parcel Map, the Administrator may rely on the land area shown on the applicable Final Map.

**"Act"** means the Mello-Roos Communities Facilities Act of 1982, as amended, being Chapter 2.5, Division 2 of Title 5 of the Government Code of the State of California.

**"Administrative Expenses"** means any ordinary and necessary expense incurred by the School District on behalf of the District related to the determination of the amount of the levy of Special Taxes, the collection of Special Taxes, including, but not limited to, the reasonable expenses of collecting delinquencies, the administration of Bonds, the proportionate payment of salaries and benefits of any School District employee whose duties are directly related to the administration of the District, and reasonable costs otherwise incurred in order to carry out the authorized purposes of the District including, but not limited to, a proportionate amount of School District general administrative overhead related thereto.

**"Administrator"** means an official of the School District or designee thereof, responsible for determining the levy and collection of the Special Taxes.

**"Annual Special Tax"** means the Special Tax levied in any Fiscal Year on any Assessor's Parcel.

**"Assessor's Parcel"** means a parcel of land designated on an Assessor's Parcel Map with an assigned Assessor's Parcel Number within the boundaries of the District.

**"Assessor's Parcel Map"** means an official map of the Assessor of the County designating parcels by Assessor's Parcel Number.

**"Assessor's Parcel Number"** means that number assigned to an Assessor's Parcel by the County for purposes of identification.

**"Assigned Annual Special Tax"** means the Special Tax of that name described in Section D hereof.

**"Backup Annual Special Tax"** means the Special Tax of that name described in Section E hereof.

**"Board"** means the Governing Board (Board of Education) of the School District, or its designee(s), acting as the Legislative Body of the District.

**"Bond Index"** means the national Bond Buyer Revenue Index, commonly referenced as the 25-Bond Revenue Index. In the event the Bond Index ceases to be published, the index used shall be based on a comparable index for revenue bonds maturing in 30 years with an average rating equivalent to Moody's A1 and/or Standard & Poor's A+, as determined by the Board.

**"Bond Yield"** means the yield of the last series of Bonds issued. For purposes of this calculation the yield of the Bonds shall be the yield calculated at the time such Bonds are issued, pursuant to Section 148 of the Internal Revenue Code of 1986, as amended, for the purpose of the Non-Arbitrage (Tax) Certificate or other similar bond issuance document.

**"Bonds"** means any obligation to repay a sum of money, including obligations in the form of bonds, notes, certificates of participation, long-term leases, loans from government agencies, or loans from banks, other financial institutions, private businesses, or individuals, or long-term contracts, or any refunding thereof, to which the Special Taxes have been pledged for repayment.

**"Building Square Footage"** or **"BSF"** means the square footage of assessable internal living space of a Unit, exclusive of any carports, walkways, garages, overhangs, patios, enclosed patios, detached accessory structure, other structures not used as living space, or any other square footage excluded under Government Code Section 65995 as determined by reference to the building permit(s) for such Unit.

**"County"** means the County of Riverside, California.

**"Developed Property"** means all Assessor's Parcels of Taxable Property for which building permit(s) were issued on or before May 1 of the prior Fiscal Year, provided that such Assessor's Parcels were created on or before January 1 of the prior Fiscal Year, as reasonably determined by the Administrator.

**"District"** means Community Facilities District No. 2019-2 of the School District.

**"Exempt Property"** means all Assessor's Parcels designated as being exempt from Special Taxes pursuant to Section L hereof.

**"Final Map"** means a final tract map, parcel map, lot line adjustment, or functionally equivalent map or instrument that creates individual Lots, recorded in the Office of the County Recorder.

**"Fiscal Year"** means the period commencing on July 1 of any year and ending on the following June 30.

**"Goals and Policies"** means the "Local Goals and Policies" for Community Facilities Districts established by the School District approved by the Board by Resolution No. 2001-02-41 on January 15, 2002, as amended from time to time.

**"Land Use Class or Classes"** means the tax classifications depicted in Table 1 for all Assessor's Parcel of Developed Property based on the Building Square Footage of such Assessor's Parcel.

**"Lot"** means an individual legal lot created by a Final Map for which a building permit for residential construction has been or could be issued.

**"Maximum Special Tax"** means for each Assessor's Parcel, the maximum Special Tax, determined in accordance with Section C, which can be levied by the District in a given Fiscal Year on such Assessor's Parcel.

**"Mitigation Agreement"** means the School Facilities Mitigation Agreement made and entered into as of November 12, 2019 by and among the School District and Perris-Cactus Development, LLC.

**"Net Taxable Acreage"** means the total Acreage of Developed Property expected to exist within the District after all Final Maps are recorded.

**"Partial Prepayment Amount"** means the amount required to prepay a portion of the Special Tax obligation for an Assessor's Parcel as described in Section I hereof.

**"Prepayment Administrative Fees"** means any fees or expenses of the School District or the District associated with the prepayment of the Special Tax obligation of an Assessor's Parcel. Prepayment Administrative Fees shall include, among other things, the cost of computing the Prepayment Amount, redeeming Bonds, and recording or filing of any notices to evidence such prepayment and any associated or resulting redemption of Bonds.

**"Prepayment Amount"** means the amount required to prepay the Special Tax obligation in full for an Assessor's Parcel as described in Section H hereof.

**"Present Value of Taxes"** means for any Assessor's Parcel the present value of (i) the unpaid portion, if any, of the Annual Special Tax applicable to such Assessor's Parcel in the current Fiscal Year and (ii) the Special Taxes expected to be levied on such Assessor's Parcel in each remaining Fiscal Year, as determined by the Administrator, until the termination date specified in Section K, but in no event longer than 33 Fiscal Years. The discount rate used for this calculation shall be equal to (a) the Bond Yield after Bond issuance or (b) the most recently published Bond Index prior to Bond issuance.

**"Proportionately"** means that the ratio of the actual Annual Special Tax levy to the applicable Assigned Annual Special Tax is equal for all applicable Assessor's Parcels. In the case of Developed Property subject to apportionment of the Annual Special Tax under Step Four of Section F, "Proportionately" shall mean that the quotient of (i) the Annual Special Tax less the Assigned Annual Special Tax divided by (ii) the Backup Annual Special Tax less the Assigned Annual Special Tax is equal for all applicable Assessor's Parcels.

**"Provisional Undeveloped Property"** means all Assessor's Parcels of Taxable Property that would otherwise be classified as Exempt Property pursuant to Section K but cannot be classified as Exempt Property because to do so would reduce the Net Taxable Acreage below the required minimum Acreage set forth in Section K, as applicable.

**"Reserve Fund Credit"** means an amount equal to the lesser of (i) the reduction in the applicable reserve fund requirement(s) resulting from the redemption of Bonds with the Prepayment Amount or (ii) ten percent (10%) of the amount of Bonds which will be redeemed. If a surety bond or other credit instrument satisfies the reserve requirement or the reserve requirement is underfunded at the time of the prepayment, no Reserve Fund Credit shall be given.

**"School District"** means the Moreno Valley Unified School District, a public school district organized and operating pursuant to the Constitution and laws of the State of California.

**"Special Tax"** means any of the special taxes authorized to be levied by the District pursuant to the Act and this RMA.

**"Special Tax Requirement"** means the amount required in any Fiscal Year to pay (i) the debt service or the periodic costs on all outstanding Bonds, (ii) Administrative Expenses, (iii) the costs associated with the release of funds from an escrow account or accounts established in association with the Bonds, (iv) any amount required to establish or replenish any reserve funds (or accounts thereof) established in association with the Bonds, and (v) the collection or accumulation of funds for the acquisition or construction of school facilities and certain costs associated with the maintenance and operations of school facilities authorized by the District provided that the inclusion of such amount does not cause an increase in the levy of Special Tax on Undeveloped Property or Provisional Undeveloped Property as set forth in Steps Two through Four of Section G, less (vi) any amount(s) available to pay debt service or other periodic costs on the Bonds pursuant to any applicable bond indenture, fiscal agent agreement, trust agreement, or equivalent agreement or document. In arriving at the Special Tax Requirement, the Administrator shall take into account the reasonably anticipated delinquent Special Taxes, provided that the amount included cannot cause the Annual Special Tax of an Assessor Parcel of Developed Property to increase by greater than ten percent (10%) of what would have otherwise been levied.

**"Taxable Property"** means all Assessor's Parcels which are not classified as Exempt Property.

**"Undeveloped Property"** means all Assessor's Parcels of Taxable Property which are not classified as Developed Property.

**"Unit"** means each separate residential dwelling unit, including but not limited to, a single family attached or detached unit, condominium, an apartment unit, mobile home, or otherwise, excluding hotel and motels.

**SECTION B**  
**CLASSIFICATION OF ASSESSOR'S PARCELS**

Each Fiscal Year, commencing with Fiscal Year 2020/2021, all Assessor's Parcels within the District shall be classified as either Taxable Property or Exempt Property. In addition, each Assessor's Parcel of Taxable Property shall be further classified as Developed Property, Undeveloped Property or Provisional Undeveloped Property. Developed Property shall be assigned to a Land Use Class, according to Table 1 below, based on the Building Square Footage of each Unit.

**Table 1**  
**Land Use Classification**

Land Use Class	Building Square Footage
1	≤ 1,700 sq. ft.
2	1,701 – 1,900 sq. ft.
3	1,901 – 2,100 sq. ft.
4	2,101 – 2,300 sq. ft.
5	2,301 – 2,500 sq. ft.
6	> 2,500 sq. ft.

**SECTION C**  
**MAXIMUM SPECIAL TAX**

**1. Developed Property**

The Maximum Special Tax for each Assessor's Parcel classified as Developed Property shall be the greater of the amount derived by the application of the (a) Assigned Annual Special Tax or (b) Backup Annual Special Tax.

**2. Undeveloped Property**

The Maximum Special Tax for each Assessor's Parcel classified as Undeveloped Property or Provisional Undeveloped Property shall be derived by the application of the Assigned Annual Special Tax.

**SECTION D  
ASSIGNED ANNUAL SPECIAL TAXES**

**1. Developed Property**

The Assigned Annual Special Tax for each Assessor's Parcel of Developed Property will be determined in accordance with Table 2 below, subject to increases as described below.

**Table 2**  
**Fiscal Year 2020/2021**  
**Assigned Annual Special Taxes**  
**for Developed Property**

Land Use Class	Building Square Footage	Assigned Annual Special Tax
1	≤ 1,700 sq. ft.	\$2,132.15 per Unit
2	1,701 – 1,900 sq. ft.	\$2,229.25 per Unit
3	1,901 – 2,100 sq. ft.	\$2,317.44 per Unit
4	2,101 – 2,300 sq. ft.	\$2,458.46 per Unit
5	2,301 – 2,500 sq. ft.	\$2,520.20 per Unit
6	> 2,500 sq. ft.	\$2,687.77 per Unit

**2. Undeveloped Property and Provisional Undeveloped Property**

The Assigned Annual Special Tax for each Assessor's Parcel of Undeveloped Property or Provisional Undeveloped Property in Fiscal Year 2020/2021 shall be \$33,952.26 per acre of Acreage.

**3. Increases in the Assigned Annual Special Tax**

**a. Developed Property**

On each July 1, commencing July 1, 2021, the Assigned Annual Special Tax applicable to Developed Property shall be increased by two percent (2.00%) of the amount in effect the prior Fiscal Year.

**b. Undeveloped Property and Provisional Undeveloped Property**

On each July 1, commencing July 1, 2021, the Assigned Annual Special Tax per acre of Acreage for Undeveloped Property and Provisional Undeveloped Property shall be increased by two percent (2.00%) of the amount in effect the prior Fiscal Year.

**SECTION E**  
**BACKUP ANNUAL SPECIAL TAX**

Each Fiscal Year, each Assessor's Parcel of Developed Property shall be subject to a Backup Annual Special Tax.

**1. Calculation of the Backup Annual Special Tax**

The Backup Annual Special Tax for an Assessor's Parcel of Developed Property within a Final Map shall be the rate per Lot calculated in accordance with the following formula in Fiscal Year 2020/2021 or such later Fiscal Year in which such Final Map is created, subject to increases as described below:

$$B = (U \times A) / L$$

The terms above have the following meanings:

- |   |   |  |
|---|---|--|
| B | = | Backup Annual Special Tax per Lot for the applicable Final Map   |
| U | = | Assigned Annual Special Tax per Acre of Undeveloped Property in the Fiscal Year the calculation is performed                       |
| A | = | Acreage of Taxable Property expected to exist within such Final Map at the time of calculation, as determined by the Administrator |
| L | = | Number of Lots within the applicable Final Map at the time of calculation  |

**2. Changes to a Final Map**

If the Final Map(s) described in the preceding paragraph are subsequently changed or modified, then the Backup Annual Special Tax for each Assessor's Parcel of Developed Property changed or modified in each such Final Map shall be a rate per square foot of Acreage calculated as follows:

- a. Determine the total Backup Annual Special Tax revenue anticipated to apply to the changed or modified Assessor's Parcels prior to the change or modification.
- b. The result of paragraph a. above shall be divided by the Acreage of Taxable Property of the modified Assessor's Parcels, as reasonably determined by the Administrator.
- c. The result of paragraph b above shall be divided by 43,560. The result is the Backup Annual Special Tax per square foot of Acreage that shall be applicable to the modified Assessor's Parcels, subject to increases as described below.

**3. Increase in the Backup Annual Special Tax**

Each July 1, commencing the July 1 following the initial calculation of the Backup Annual Special Tax for Developed Property within a Final Map, the Backup Annual Special Tax for each Lot within such Final Map shall be increased by two percent (2.00%) of the amount in effect the prior Fiscal Year.

**SECTION F  
REDUCTION OF THE SPECIAL TAX  
PRIOR TO BOND SALE**

Prior to the issuance of the first series of Bonds, the Maximum Special Tax and Assigned Annual Special Tax on Taxable Property may be reduced in accordance with, and subject to, the conditions set forth in this Section F and the terms of the Mitigation Agreement without the need for any proceedings to make changes as permitted or required under the Act.

Prior to the issuance of the first series of Bonds the Administration may review information regarding the current and expected value of residential units within the District and prepare an analysis estimating the total property tax burden of completed homes within the District. The Maximum Special Tax and Assigned Annual Special Tax on Taxable Property may be reduced with the written consent of the Administrator to a level such that the resulting estimated total property tax rate complies with the School District's Goals and Policies and the terms of the Mitigation Agreement.

With respect to any Assessor's Parcel for which the Special Tax is reduced, the Board shall indicate in the records of the District that there has been a reduction of the Special Tax obligation and shall cause a suitable notice to be recorded in compliance with the Act to indicate the reduction of the Special Tax obligation.

**SECTION G**  
**METHOD OF APPORTIONMENT**  
**OF THE ANNUAL SPECIAL TAX**

Commencing Fiscal Year 2020/2021 and for each subsequent Fiscal Year, the Board shall levy Annual Special Taxes on all Taxable Property in accordance with the following steps:

- Step One:** The Special Tax shall be levied on each Assessor's Parcel of Developed Property at the Assigned Annual Special Tax applicable to each such Assessor's Parcel.
- Step Two:** If additional moneys are needed to satisfy the Special Tax Requirement after the first step has been completed, the Special Tax shall be levied Proportionately on each Assessor's Parcel of Undeveloped Property up to 100% of the Assigned Annual Special Tax applicable to each such Assessor's Parcel as needed to satisfy the Special Tax Requirement.
- Step Three:** If additional moneys are needed to satisfy the Special Tax Requirement after the second step has been completed, the Special Tax on each Assessor's Parcel of Developed Property, for which the Maximum Special Tax is the Backup Annual Special Tax, shall be increased Proportionately from the Assigned Annual Special Tax up to 100% of the Backup Annual Special Tax applicable to each such Assessor's Parcel as needed to satisfy the Special Tax Requirement.
- Step Four:** If additional moneys are needed to satisfy the Special Tax Requirement after the third step has been completed, the Special Tax shall be levied Proportionately on each Assessor's Parcel of Provisional Undeveloped Property up to 100% of the Assigned Annual Special Tax applicable to each such Assessor's Parcel as needed to satisfy the Special Tax Requirement.

**SECTION H**  
**PREPAYMENT OF SPECIAL TAXES**

**1. Special Tax Prepayment Times and Conditions**

The Special Tax obligation of an Assessor's Parcel of Taxable Property may be prepaid, if there are no delinquent Special Taxes, penalties, or interest charges outstanding with respect to such Assessor's Parcel. An owner of an Assessor's Parcel intending to prepay the Special Tax shall provide the School District with written notice of intent to prepay. Within thirty (30) days of receipt of such written notice, the Administrator shall determine the Prepayment Amount for such Assessor's Parcel and shall notify such owner of such Prepayment Amount.

**2. Special Tax Prepayment Calculation**

The Prepayment Amount shall be calculated according to the following formula:

$$P = PVT - RFC + PAF$$

The terms above have the following meanings:

P	=	Prepayment Amount
PVT	=	Present Value of Taxes
RFC	=	Reserve Fund Credit
PAF	=	Prepayment Administrative Fees

**3. Special Tax Prepayment Procedures and Limitations**

The amount representing the Present Value of Taxes attributable to the prepayment less the Reserve Fund Credit attributable to the prepayment shall, prior to the issuance of Bonds, be deposited into a separate account held with the School District and disbursed in accordance with the Mitigation Agreement and after the issuance of Bonds be deposited into the applicable account or fund established under the trust agreement, indenture agreement or fiscal agent agreement and used to pay debt service or redeem Bonds. The amount representing the Prepayment Administrative Fees attributable to the prepayment shall be retained and deposited into the applicable account by the District.

With respect to any Assessor's Parcel for which the Special Tax is prepaid, the Board shall indicate in the records of the District that there has been a prepayment of the Special Tax obligation and shall cause a suitable notice to be recorded in compliance with the Act to indicate the prepayment of the Special Tax obligation and the release of the Special Tax lien on such Assessor's Parcel, and the obligation of such Assessor's Parcel to pay such Special Tax shall cease.

Notwithstanding the foregoing, no prepayment will be allowed unless the amount of Assigned

Annual Special Taxes that may be levied on Taxable Property, net of Administrative Expenses and excluding Provisional Undeveloped Property, after such prepayment shall be at least 1.10 times the regularly scheduled annual interest and principal payments on all currently outstanding Bonds in each future Fiscal Year and such prepayment will not impair the security of all currently outstanding Bonds, as reasonably determined by the Administrator. Such determination shall include identifying all Assessor's Parcels that are expected to be classified as Exempt Property.

Notwithstanding the above, the ability to prepay the Special Tax obligation of an Assessor's Parcel may be suspended, by the Administrator, acting in his or her absolute and sole discretion for and on behalf of the District, without notice to the owners of property within the District for a period of time, not to exceed sixty (60) days, prior to the scheduled issuance of Bonds by the District to assist in the efficient preparation of the required bond market disclosure.

## **SECTION I PARTIAL PREPAYMENT OF SPECIAL TAXES**

### **1. Partial Prepayment Times and Conditions**

The Special Tax obligation for Assessor's Parcels of Taxable Property may be partially prepaid in increments of ten (10) Units, provided that there are no delinquent Special Taxes, penalties, or interest charges outstanding with respect to such Assessor's Parcels at the time the Special Tax obligation would be partially prepaid. An owner of an Assessor's Parcel(s) intending to partially prepay the Special Tax shall provide the District with written notice of their intent to partially prepay. Within thirty (30) days of receipt of such written notice, the Administrator shall determine the Partial Prepayment Amount of such Assessor's Parcel and shall notify such owner of such Partial Prepayment Amount.

### **2. Partial Prepayment Calculation**

The Partial Prepayment Amount shall be calculated according to the following formula:

$$PP = PVT \times F - RFC + PAF$$

The terms above have the following meanings:

PP	=	the Partial Prepayment Amount
PVT	=	Present Value of Taxes
F	=	the percent by which the owner of the Assessor's Parcel is partially prepaying the Special Tax obligation
RFC	=	Reserve Fund Credit

PAF = Prepayment Administrative Fees

**3. Partial Prepayment Procedures and Limitations**

The amount representing the Present Value of Taxes attributable to the prepayment less the Reserve Fund Credit attributable to the prepayment shall, prior to the issuance of Bonds, be deposited into a separate account held with the School District and disbursed in accordance with the Mitigation Agreement and after the issuance of Bonds be deposited into the applicable account or fund established under the trust agreement or indenture agreement or fiscal agent agreement and used to pay debt service or redeem Bonds. The amount representing the Prepayment Administrative Fees attributable to the prepayment shall be retained and deposited into the applicable account by the District.

With respect to any Assessor's Parcel for which the Special Tax obligation is partially prepaid, the Board shall indicate in the records of the District that there has been a partial prepayment of the Special Tax obligation and shall cause a suitable notice to be recorded in compliance with the Act to indicate the partial prepayment of the Special Tax obligation and the partial release of the Special Tax lien on such Assessor's Parcel, and the obligation of such Assessor's Parcel to pay such prepaid portion of the Special Tax shall cease. Additionally, the notice shall indicate that the Assigned Annual Special Tax and the Backup Annual Special Tax if applicable for the Assessor's Parcel has been reduced by an amount equal to the percentage which was partially prepaid.

Notwithstanding the foregoing, no partial prepayment will be allowed unless the amount of Special Taxes that may be levied on Taxable Property, excluding Provisional Undeveloped Property, after such partial prepayment, and net of Administrative Expenses, shall be at least 1.10 times the regularly scheduled annual interest and principal payments on all currently outstanding Bonds in each future Fiscal Year and such partial prepayment will not impair the security of all currently outstanding Bonds, as reasonably determined by the Administrator. Such determination shall include identifying all Assessor's Parcels that are expected to be classified as Exempt Property.

Notwithstanding the above, the ability to prepay the Annual Special Tax obligation of an Assessor's Parcel may be suspended, by the Administrator, acting in his or her absolute and sole discretion for and on behalf of the District, without notice to the owners of property within the District for a period of time, not to exceed sixty (60) days, prior to the scheduled issuance of Bonds by the District to assist in the efficient preparation of the required bond market disclosure.

## **SECTION J TERMINATION OF SPECIAL TAX**

The Special Tax shall be levied for a term of three (3) Fiscal Years after the final maturity of the last series of Bonds, provided that the Special Tax shall not be levied later than Fiscal Year 2064/2065. However, the Special Tax may cease to be levied in an earlier Fiscal Year if the Board has determined (i) that all required interest and principal payments on the Bonds have been paid, (ii) all authorized facilities of the District have been acquired and all reimbursements have been paid, and (iii) all other obligations of the District have been satisfied.

## **SECTION K EXEMPTIONS**

The Administrator shall classify as Exempt Property in the chronological order in which each Assessor Parcel becomes (i) owned by the State of California, federal or other local governments, (ii) used as places of worship and are exempt from *ad valorem* property taxes because they are owned by a religious organization, (iii) owned by a homeowners' association, (iv) burdened with a public or utility easements making impractical their utilization for other than the purposes set forth in the easement, or (v) any other Assessor's Parcels at the reasonable discretion of the Board, provided that no such classification would reduce the Net Taxable Acreage to less than 8.6049 acres of Acreage ("Minimum Taxable Acreage").

Notwithstanding the above, the Administrator or Board shall not classify an Assessor's Parcel as Exempt Property if such classification would reduce the sum of the Acreage of all Taxable Property to less than the Minimum Taxable Acreage. Assessor's Parcels which cannot be classified as Exempt Property because such classification would reduce the Acreage of all Taxable Property to less than the Minimum Taxable Acreage will be classified as Provisional Undeveloped Property, as applicable, and will continue to be subject to Special Taxes accordingly.

## **SECTION L APPEALS**

Any property owner claiming that the amount or application of the Special Tax is not correct may file a written notice of appeal with the Administrator to be received by the Administrator not later than six (6) months after having paid the first installment of the Special Tax that is disputed. The reissuance or cancellation of a building permit is not an eligible reason for appeal. In order to be considered sufficient, any notice of appeal must (i) specifically identify the property by address and Assessor's Parcel Number, (ii) state the amount in dispute and whether it is the whole amount or only a portion of the Special Tax, (iii) state all grounds on which the property owner is disputing the amount or application of the Special Tax, including a reasonably detailed explanation as to why the amount or application of such Special Tax is incorrect, (iv) include all documentation, if any, in support of the claim, and (v) be verified under penalty of perjury by the person who paid the Special Tax or his or her guardian, executor or administrator. The Administrator shall promptly review the appeal, and if necessary, meet with the property owner, consider written and oral evidence regarding the amount of the Special Tax, and rule on the appeal. If the representative's decision requires that the Special Tax for an Assessor's Parcel be modified or changed in favor of the property owner, a cash refund shall not be made (except for the last year of levy), but an adjustment shall be made to the Special Tax on that Assessor's Parcel in the subsequent Fiscal Year(s) as the representative's decision shall indicate.

**SECTION M**  
**MANNER OF COLLECTION**

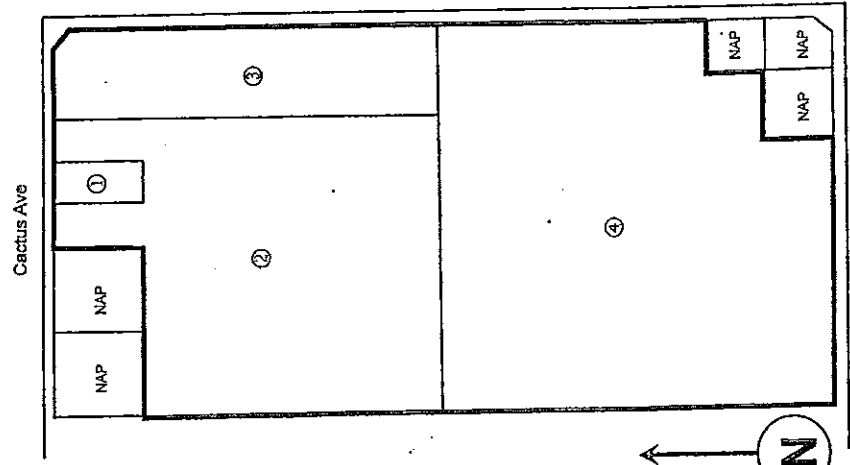
The Special Tax shall be collected in the same manner and at the same time as ordinary *ad valorem* property taxes and shall be subject to the same penalties, the same procedure, sale and lien priority in the case of delinquency; provided, however, that the District may directly bill all or a portion of the Special Tax, may collect Special Taxes at a different time or in a different manner if necessary to meet its financial or contractual obligations, and if so collected, a delinquent penalty of ten percent (10%) of the Special Tax will attach at 5:00 p.m. on the date the Special Tax becomes delinquent and interest at 1.5% per month of the Special Tax will attach on the July 1 after the delinquency date and the first of each month thereafter until such Special Taxes are paid.

# **Exhibit B**

## **CFD Boundary Map**

PROPOSED BOUNDARY MAP OF  
COMMUNITY FACILITIES DISTRICT NO. 2019-2 OF THE  
MORENO VALLEY UNIFIED SCHOOL DISTRICT  
RIVERSIDE COUNTY  
STATE OF CALIFORNIA

SHEET 1 OF 1



Lot No.	Assessor's Parcel No.
①	482-582-038
②	482-582-039
③	482-582-040
④	482-230-024

**LEGEND**

Boundaries of Community Facilities District  
 Lot Number  
NAP Not a Part

(1) Filed in the office of the Clerk of the Board of Education of the Moreno Valley Unified School District this 8 day of October, 2019.  
Marsha Locke, Clerk of the Board of Education  
 Moreno Valley Unified School District

(2) I hereby certify that the within map showing the proposed boundaries of Community Facilities District No. 2019-2 of the Moreno Valley Unified School District, Riverside County, State of California, was approved by the Board of Education of the Moreno Valley Unified School District at the regular meeting thereof, held on this 8 day of October, 2019 by its Resolution No. 2019-20-17.  
Marsha Locke, Clerk of the Board of Education  
 Moreno Valley School District

(3) Filed this 23 day of October, 2019, at the hour of 5:00 o'clock P.M. in Book 84 of Maps Assessments and Community Facilities Districts at Pages 43 and as Instrument No. 2019-07-18-033-20 in the offices of the County Recorder of Riverside County, State of California.

Fee: \$ 9.<sup>00</sup>  
 By: Marsha Locke  
 County Recorder of Riverside County  
 Assessor - Clerk - Recorder Peter Aldama

Reference is hereby made to the Assessor maps of the County of Riverside for an exact description of the lines and dimensions of each lot and parcel.

Prepared by:  
KeyAnalytics

# **Exhibit C**

## **Assessor's Parcel Maps**

THIS MAP WAS PREPARED FOR ASSESSMENT PURPOSES ONLY. NO LIABILITY IS ASSUMED FOR THE ACCURACY OF THE DATA SHOWN. ASSESSOR'S PARCEL MAY NOT COMPLY WITH LOCAL LOT-SPLIT OR BUILDING SITE ORDINANCES.

SE 1/4 OF SEC. 18, T.3S., R.3W.

T.R.A. 021-023

482-71

CITY OF MORENO VALLEY

482-23  
482-58

SHEET 1 OF 3

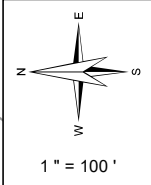
CACTUS AVENUE

PERRIS

BLVD

LOT B

B.V. & A.D.C.



**Legend**

- Lot Lines
- - - Right-Of-Way
- - - Old Lot Lines
- - - Reference R.O.W
- ... Other Easements
- ... Lease Area
- Subdivision Tic Mark

Date	Old Number	New Number
7/20/2021	1	5-17
7/20/2021	17	711-19
11/9/2021	13	18-20
11/9/2021	7	21-22
11/9/2021	18	711-10-13
11/9/2021	21	711-14-18
11/9/2021	19	711-19-24
11/9/2021	22	711-25-30
4/20/2022	5	23-28
4/20/2022	6	29-30
4/20/2022	8	31-32
4/20/2022	9	33-34
4/20/2022	10	35-36
4/20/2022	12	37-41
4/20/2022	38	711-31-34
4/20/2022	20	711-35-40
4/20/2022	11	712-17
4/20/2022	34	712-8-11
4/20/2022	30	712-12-18
4/20/2022	29	712-19-31
4/20/2022	33	712-32-35
4/20/2022	27	711-41-45
4/20/2022	40	711-46-50
4/20/2022	26	711-51-54
4/20/2022	39	711-55-58
4/20/2022	25	711-59-63
4/20/2022	36	712-36-39
4/20/2022	37	711-64-67
4/20/2022	24	712-40-44
4/20/2022	32	712-45-48
4/20/2022	35	712-49-52
4/20/2022	23	712-53-61
4/20/2022	31	712-62-65
4/20/2022	28	711-68-75
4/20/2022	41	711-76-79

**Map Reference**

- MB 11/10 S.B. BEAR VALLEY & ALESSANDRO DEVELOPMENT CO.
- MB 475/82 - 87 TRACT MAP NO. 36708
- CM 277/49 - 62 POR LOT 1 #0642765 12/17/2020
- CM 278/162 - 170 POR LOT 1 #0189734 3/25/2021
- CM 278/171 - 179 POR LOT 1 #0189735 3/25/2021
- CM 280/63 - 71 POR LOT 1 #0283241 05/06/2021
- CM 280/72 - 80 POR LOT 1 #0283242 05/06/2021
- CM 280/81 - 89 POR LOT 1 #0283243 05/06/2021
- CM 280/90 - 98 POR LOT 1 #0323216 05/26/2021
- CM 280/99 - 107 POR LOT 1 #0323217 05/26/2021
- CM 280/108 - 116 POR LOT 1 #0323218 05/26/2021
- CM 280/117 - 125 POR LOT 1 #0323219 05/26/2021
- CM 280/126 - 134 POR LOT 1 #0323220 05/26/2021
- CM 280/135 - 143 POR LOT 1 #0323221 05/26/2021

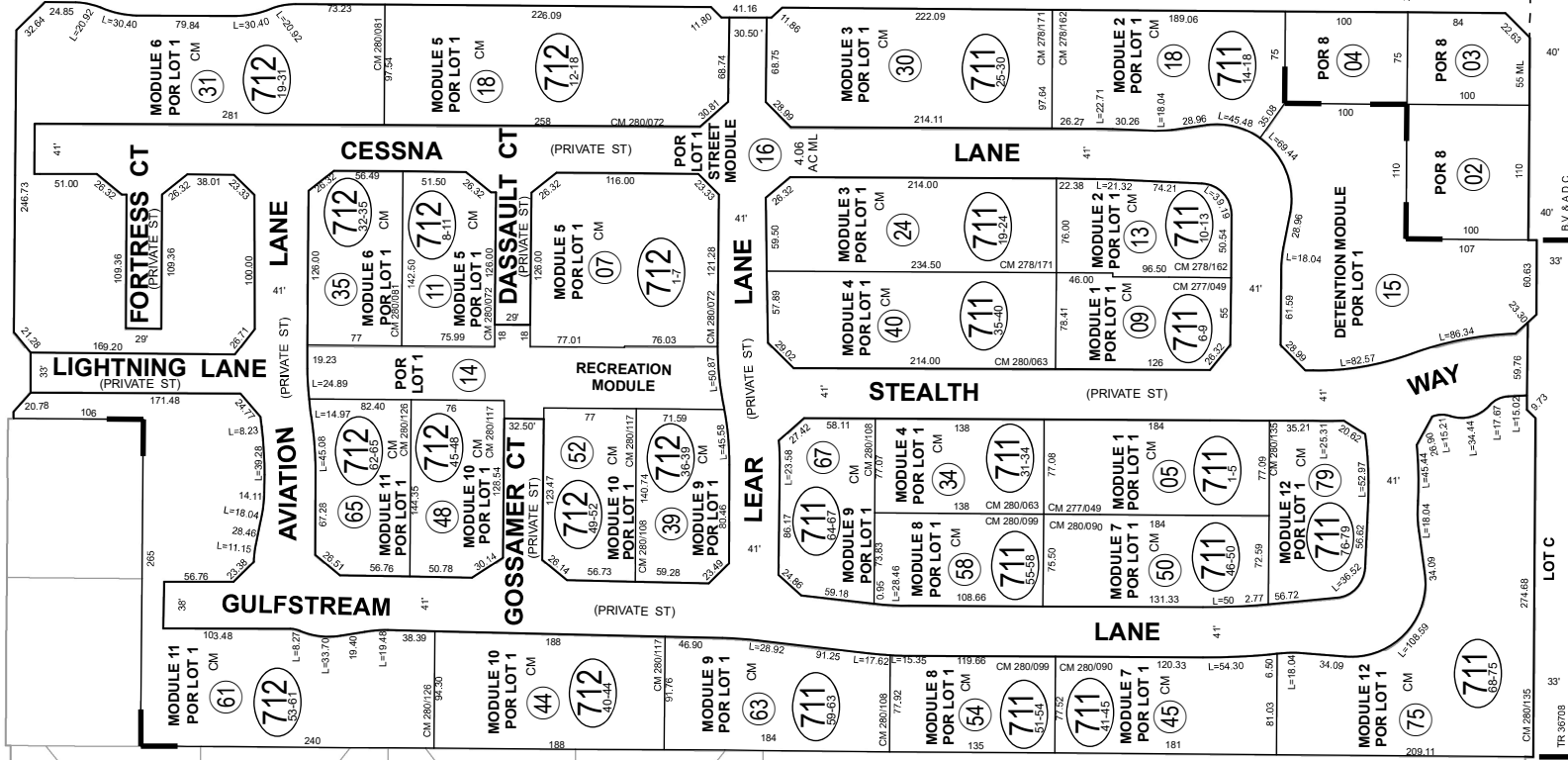
May 2022



ASSESSOR'S MAP BK482 PG.71  
Riverside County, Calif.

limontes

Pg 59	Bk 484 Pg 12	Bk 484 Pg 23	Bk 484 Pg 24
Pg 58	Pg 71	Pg 23	Pg 25



THIS MAP WAS PREPARED FOR ASSESSMENT PURPOSES ONLY. NO LIABILITY IS ASSUMED FOR THE ACCURACY OF THE DATA SHOWN. ASSESSOR'S PARCEL MAY NOT COMPLY WITH LOCAL LOT-SPLIT OR BUILDING SITE ORDINANCES.

SE 1/4 OF SEC. 18, T.3S., R.3W.

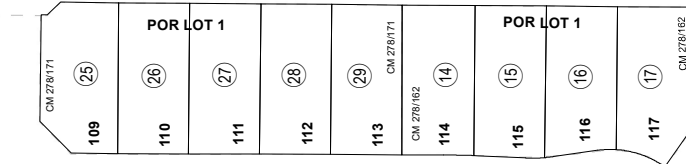
TRA 021-023

482-711

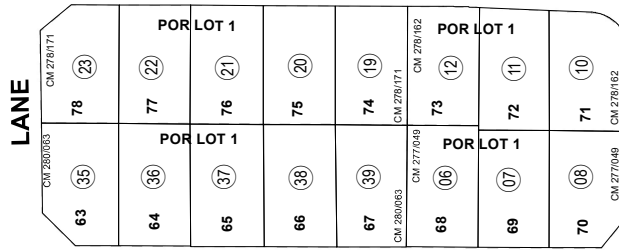
CITY OF MORENO VALLEY

482-23  
482-58  
FLOOR 1  
SHEET 2 OF 3

PERRIS BLVD

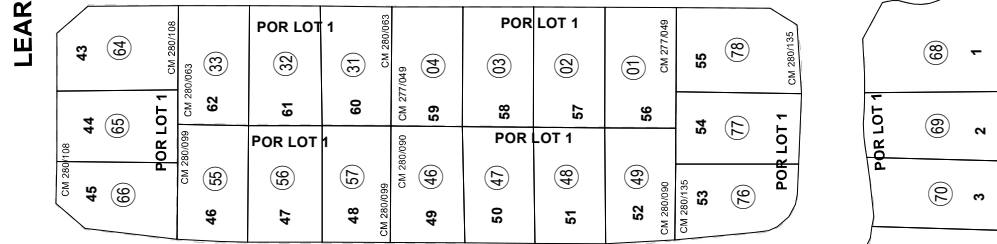


CESSNA LANE



LANE

STEALTH WAY

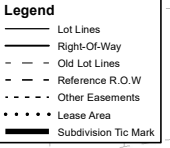
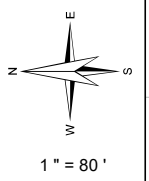
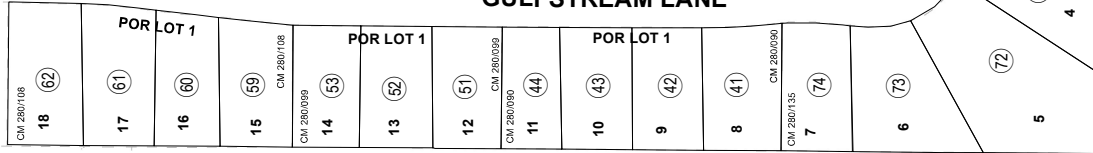


LEAR

AVENUE

DELPHINIUM

GULFSTREAM LANE



Map Reference

- MB 475/82 - 87 TRACT MAP NO. 36708
- CM 277/49 - 62 POR LOT 1 #0642765 12/17/2020
- CM 278/162 - 170 POR LOT 1 #0189734 3/25/2021
- CM 278/171 - 179 POR LOT 1 #0189735 3/25/2021
- CM 280/63 - 71 POR LOT 1 #0283241 05/06/2021
- CM 280/90 - 98 POR LOT 1 #0323216 05/26/2021
- CM 280/99 - 107 POR LOT 1 #0323217 05/26/2021
- CM 280/108 - 116 POR LOT 1 #0323218 05/26/2021
- CM 280/135 - 143 POR LOT 1 #0323221 05/26/2021





# **Exhibit D**

## **Series 2022 Special Tax Bonds Debt Service Schedule**

**Moreno Valley Unified School District  
Community Facilities District No. 2019-2  
Series 2022 Special Tax Bonds  
Debt Service Schedule**

Period	Special Tax Revenue Bonds		
	Principal	Interest	Debt Service
9/1/2022	\$0.00	\$52,771.84	\$52,771.84
9/1/2023	\$15,000.00	\$231,681.26	\$246,681.26
9/1/2024	\$20,000.00	\$231,081.26	\$251,081.26
9/1/2025	\$25,000.00	\$230,281.26	\$255,281.26
9/1/2026	\$30,000.00	\$229,281.26	\$259,281.26
9/1/2027	\$40,000.00	\$227,781.26	\$267,781.26
9/1/2028	\$45,000.00	\$225,781.26	\$270,781.26
9/1/2029	\$55,000.00	\$223,531.26	\$278,531.26
9/1/2030	\$60,000.00	\$220,781.26	\$280,781.26
9/1/2031	\$70,000.00	\$217,781.26	\$287,781.26
9/1/2032	\$80,000.00	\$214,981.26	\$294,981.26
9/1/2033	\$90,000.00	\$211,781.26	\$301,781.26
9/1/2034	\$100,000.00	\$207,843.76	\$307,843.76
9/1/2035	\$110,000.00	\$203,468.76	\$313,468.76
9/1/2036	\$120,000.00	\$198,518.76	\$318,518.76
9/1/2037	\$130,000.00	\$193,118.76	\$323,118.76
9/1/2038	\$145,000.00	\$187,268.76	\$332,268.76
9/1/2039	\$155,000.00	\$180,562.50	\$335,562.50
9/1/2040	\$170,000.00	\$173,393.76	\$343,393.76
9/1/2041	\$185,000.00	\$165,531.26	\$350,531.26
9/1/2042	\$200,000.00	\$156,975.00	\$356,975.00
9/1/2043	\$220,000.00	\$147,725.00	\$367,725.00
9/1/2044	\$235,000.00	\$137,275.00	\$372,275.00
9/1/2045	\$255,000.00	\$126,112.50	\$381,112.50
9/1/2046	\$275,000.00	\$114,000.00	\$389,000.00
9/1/2047	\$295,000.00	\$100,937.50	\$395,937.50
9/1/2048	\$315,000.00	\$86,925.00	\$401,925.00
9/1/2049	\$340,000.00	\$71,962.50	\$411,962.50
9/1/2050	\$365,000.00	\$55,812.50	\$420,812.50
9/1/2051	\$390,000.00	\$38,475.00	\$428,475.00
9/1/2052	\$420,000.00	\$19,950.00	\$439,950.00
<b>Total</b>	<b>\$4,955,000.00</b>	<b>\$5,083,372.02</b>	<b>\$10,038,372.02</b>

# **Exhibit E**

## **Delinquent Annual Special Tax Report**



# Fixed Charge Special Assessment Delinquency Report

Year End Report for Fiscal Year 2023/2024

Moreno Valley Unified School District Community Facilities District No. 2019-2



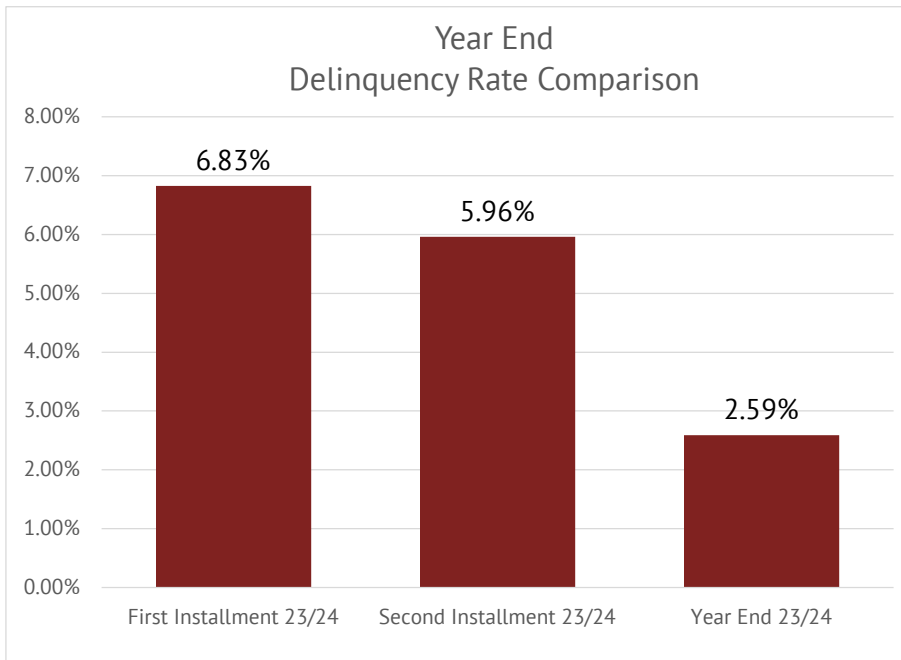
## Summary

### Year End

Total Taxes Due June 30, 2024	<b>\$310,036.52</b>
Amount Paid	<b>\$302,013.20</b>
Amount Remaining to be Collected	<b>\$8,023.32</b>
Number of Parcels Delinquent	<b>3</b>
Delinquency Rate	<b>2.59%</b>

### Foreclosure

<b>CFD Subject to Foreclosure Covenant:</b>	<b>Yes</b>
<b>Foreclosure Determination Date 1st Installment:</b>	<b>March 1st</b>
<b>Foreclosure Notification Date 1st Installment:</b>	<b>April 15th</b>
<b>Foreclosure Commencement 1st Installment Date:</b>	<b>May 30th</b>
<b>Foreclosure Determination Date 2nd Installment:</b>	<b>August 1st</b>
<b>Foreclosure Notification Date 2nd Installment:</b>	<b>September 15th</b>
<b>Foreclosure Commencement 2nd Installment Date:</b>	<b>October 30th</b>



### Foreclosure Qualification

Individual Parcel Delinquency	<b>N/A</b>
Individual Owner Multiple Parcels Delinquency	<b>N/A</b>
Individual Parcels Semi-Annual Installments	<b>5</b>
Aggregate Delinquency Rate	<b>5.00%</b>

### Parcels Qualifying for Foreclosure <sup>[1]</sup>

Parcels Exceeding Individual Foreclosure Threshold	<b>0</b>
Parcels Exceeding CFD Aggregate	<b>0</b>

[1] Pursuant to the Fiscal Agent Agreement, there is no requirement to initiate Foreclosure Proceedings as long as delinquencies will not result in a draw on the Reserve Fund such that the Reserve Fund will fall below the Reserve Requirement, and no draw has been made on the Reserve Fund.



# Fixed Charge Special Assessment Delinquency Report



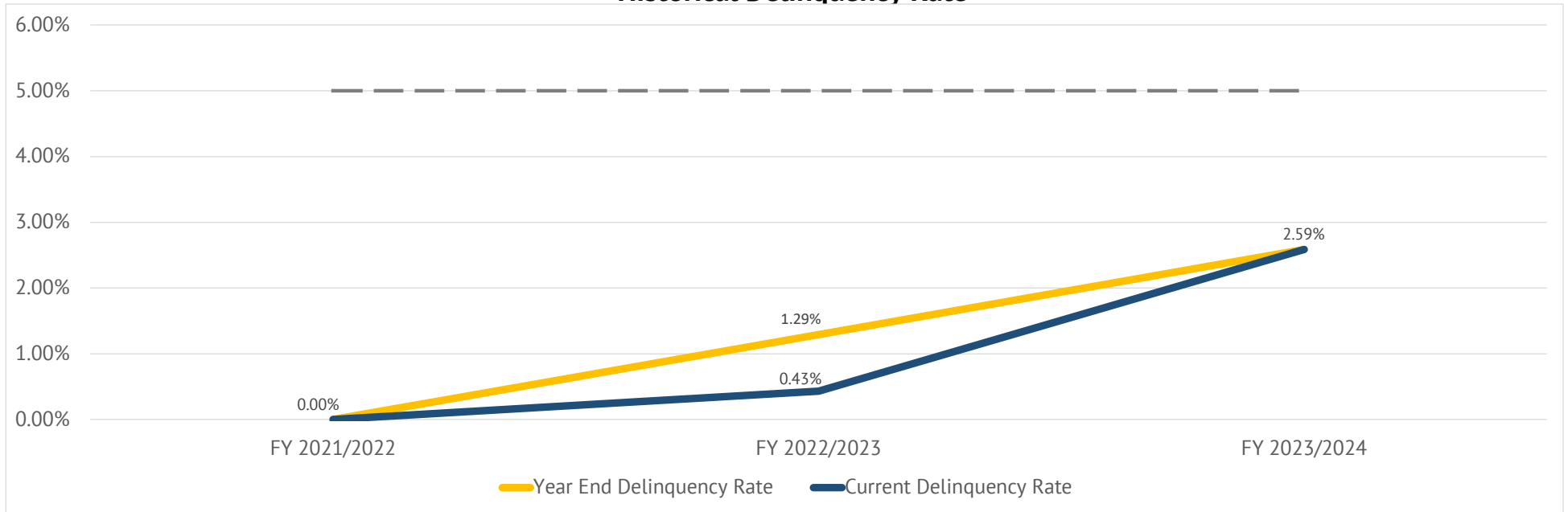
Year End Report for Fiscal Year 2023/2024

Moreno Valley Unified School District Community Facilities District No. 2019-2

## Historical Delinquency Summary

Fiscal Year	Subject Fiscal Year					June 30, 2024	
	Aggregate Special Tax	Parcels Delinquent	Amount Collected	Amount Delinquent	Delinquency Rate	Remaining Amount Delinquent	Remaining Delinquency Rate
2019/2020	No Special Tax Levy						
2020/2021							
2021/2022	\$129,951.24	0	\$129,951.24	\$0.00	0.00%	\$0.00	0.00%
2022/2023	303,957.46	2	300,024.46	3,933.00	1.29%	1,311.00	0.43%
2023/2024	310,036.52	3	302,013.20	8,023.32	2.59%	8,023.32	2.59%

## Historical Delinquency Rate



# **Exhibit F**

## **Summary of Transactions for Fiscal Agent Accounts**



**Fund: CFD No. 2019-2 (Series 2022 Special Tax Bonds)**

**Subfund: 230993000 - Special Tax Bonds**

Date	Interest	Deposits	Transfers In	Transfers Out	Expenditures	Balance	Payee	Reference	Description
07-01-2023	\$796.96	\$424,744.04	\$0.00	(\$245,831.36)	\$0.00	\$179,709.64			BEGINNING BALANCE
07-03-2023	\$428.26					\$180,137.90		Interest	Interest Earnings
07-05-2023					(\$2,750.00)	\$177,387.90	U.S. Bank	Trustee Fees	Professional Services
08-01-2023	\$695.55					\$178,083.45		Interest	Interest Earnings
09-01-2023	\$724.68					\$178,808.13		Interest	Interest Earnings
09-01-2023				(\$125,322.74)		\$53,485.39		Transfer Out	Transfer to 230993001 Bond Fund
09-05-2023				(\$53,485.39)		\$0.00		Transfer Out	Transfer to 230993007 Residual Fund
10-02-2023	\$28.05					\$28.05		Interest	Interest Earnings
11-01-2023	\$0.11					\$28.16		Interest	Interest Earnings
12-01-2023	\$0.11					\$28.27		Interest	Interest Earnings
01-02-2024	\$0.12					\$28.39		Interest	Interest Earnings
02-01-2024	\$0.12					\$28.51		Interest	Interest Earnings
02-22-2024		\$156,633.27				\$156,661.78		Deposit	Special Tax Deposit
02-28-2024				(\$10,000.00)		\$146,661.78		Transfer Out	Transfer To 230993001 Bond Fund
02-28-2024				(\$106,293.96)		\$40,367.82		Transfer Out	Transfer To 230993001 Bond Fund
03-01-2024	\$133.42					\$40,501.24		Interest	Interest Earnings
04-01-2024	\$163.66					\$40,664.90		Interest	Interest Earnings
05-01-2024	\$158.70					\$40,823.60		Interest	Interest Earnings
06-03-2024	\$164.71					\$40,988.31		Interest	Interest Earnings
06-24-2024		\$140,224.58				\$181,212.89		Deposit	Special Tax Deposit
	\$2,497.49	\$296,857.85	\$0.00	(\$295,102.09)	(\$2,750.00)	\$1,503.25			DATE RANGE BALANCE
<b>Subfund Total</b>	<b>\$3,294.45</b>	<b>\$721,601.89</b>	<b>\$0.00</b>	<b>(\$540,933.45)</b>	<b>(\$2,750.00)</b>	<b>\$181,212.89</b>	<b>Total for 230993000 - Special Tax Bonds</b>		

**Subfund: 230993001 - Bond Fund**

Date	Interest	Deposits	Transfers In	Transfers Out	Expenditures	Balance	Payee	Reference	Description
07-01-2023	\$88.18	\$0.00	\$174,021.59	\$0.00	(\$168,612.47)	\$5,497.30			BEGINNING BALANCE
07-03-2023	\$20.59					\$5,517.89		Interest	Interest Earnings
08-01-2023	\$21.59					\$5,539.48		Interest	Interest Earnings
08-31-2023			\$9,054.26			\$14,593.74		Transfer In	Transfer From 230993002 Reserve Fund
09-01-2023					(\$15,000.00)	(\$406.26)	Certificate Investors	Debt Service Principal	Debt Service Principal
09-01-2023					(\$115,840.63)	(\$116,246.89)	Certificate Investors	Debt Service Interest	Debt Service Interest
09-01-2023			\$125,322.74			\$9,075.85		Transfer In	Transfer from 230993000 Special Tax Fund
09-01-2023	\$23.73					\$9,099.58		Interest	Interest Earnings
10-02-2023	\$35.86					\$9,135.44		Interest	Interest Earnings
11-01-2023	\$37.27					\$9,172.71		Interest	Interest Earnings
12-01-2023	\$36.31					\$9,209.02		Interest	Interest Earnings


**Subfund: 230993001 - Bond Fund**

Date	Interest	Deposits	Transfers In	Transfers Out	Expenditures	Balance	Payee	Reference	Description
12-21-2023		\$0.01				\$9,209.03		Change in Investment	Short Term Gains/Losses
01-02-2024	\$37.64					\$9,246.67		Interest	Interest Earnings
02-01-2024	\$37.61					\$9,284.28		Interest	Interest Earnings
02-28-2024			\$10,000.00			\$19,284.28		Transfer In	Transfer From 230993000 Special Tax Fund
02-28-2024			\$106,293.96			\$125,578.24		Transfer In	Transfer From 230993000 Special Tax Fund
02-28-2024			\$6,494.80			\$132,073.04		Transfer In	Transfer From 230993002 Reserve Fund
03-01-2024					(\$115,540.63)	\$16,532.41	Certificate Investors	Debt Service Interest	Debt Service Interest
03-01-2024	\$67.30					\$16,599.71		Interest	Interest Earnings
04-01-2024	\$67.08					\$16,666.79		Interest	Interest Earnings
05-01-2024	\$65.05					\$16,731.84		Interest	Interest Earnings
06-03-2024	\$67.51					\$16,799.35		Interest	Interest Earnings
	\$517.54	\$0.01	\$257,165.76	\$0.00	(\$246,381.26)	\$11,302.05			DATE RANGE BALANCE
<b>Subfund Total</b>	<b>\$605.72</b>	<b>\$0.01</b>	<b>\$431,187.35</b>	<b>\$0.00</b>	<b>(\$414,993.73)</b>	<b>\$16,799.35</b>	<b>Total for 230993001 - Bond Fund</b>		

**Subfund: 230993002 - Reserve Fund**

Date	Interest	Deposits	Transfers In	Transfers Out	Expenditures	Balance	Payee	Reference	Description
07-01-2023	\$12,179.01	\$415,113.71	\$0.00	(\$5,409.12)	\$0.00	\$421,883.60			BEGINNING BALANCE
07-03-2023	\$1,580.07					\$423,463.67		Interest	Interest Earnings
08-01-2023	\$1,657.26					\$425,120.93		Interest	Interest Earnings
08-31-2023				(\$9,054.26)		\$416,066.67		Transfer Out	Transfer To 230993001 Bond Fund
09-01-2023	\$1,728.76					\$417,795.43		Interest	Interest Earnings
10-02-2023	\$1,646.55					\$419,441.98		Interest	Interest Earnings
11-01-2023	\$1,711.16					\$421,153.14		Interest	Interest Earnings
12-01-2023	\$1,666.93					\$422,820.07		Interest	Interest Earnings
12-21-2023		\$0.02				\$422,820.09		Change in Investment	Long Term Gains/Losses
12-21-2023		\$0.42				\$422,820.51		Change in Investment	Short Term Gains/Losses
01-02-2024	\$1,728.29					\$424,548.80		Interest	Interest Earnings
02-01-2024	\$1,726.99					\$426,275.79		Interest	Interest Earnings
02-28-2024				(\$6,494.80)		\$419,780.99		Transfer Out	Transfer To 230993001 Interest Fund
03-01-2024	\$1,613.64					\$421,394.63		Interest	Interest Earnings
04-01-2024	\$1,702.77					\$423,097.40		Interest	Interest Earnings
05-01-2024	\$1,651.22					\$424,748.62		Interest	Interest Earnings
06-03-2024	\$1,713.77					\$426,462.39		Interest	Interest Earnings
	\$20,127.41	\$0.44	\$0.00	(\$15,549.06)	\$0.00	\$4,578.79			DATE RANGE BALANCE
<b>Subfund Total</b>	<b>\$32,306.42</b>	<b>\$415,114.15</b>	<b>\$0.00</b>	<b>(\$20,958.18)</b>	<b>\$0.00</b>	<b>\$426,462.39</b>	<b>Total for 230993002 - Reserve Fund</b>		


**Subfund: 230993003 - Administrative Expense Fund**

Date	Interest	Deposits	Transfers In	Transfers Out	Expenditures	Balance	Payee	Reference	Description
07-01-2023	\$634.77	\$0.00	\$30,600.00	\$0.00	(\$7,345.64)	\$23,889.13			BEGINNING BALANCE
07-03-2023	\$89.47					\$23,978.60		Interest	Interest Earnings
07-26-2023					(\$2,281.88)	\$21,696.72	KeyAnalytics	Professional Services	Admin Exp April - June 2023 Request 5
08-01-2023	\$92.06					\$21,788.78		Interest	Interest Earnings
09-01-2023	\$88.67					\$21,877.45		Interest	Interest Earnings
10-02-2023	\$86.22					\$21,963.67		Interest	Interest Earnings
10-27-2023					(\$15,000.00)	\$6,963.67	M.V.U.S.D.	Professional Services	Request 7 From Cfd No 2019-2 Admin Exp
10-27-2023			\$15,000.00			\$21,963.67		Transfer In	Transfer From 230993007 Residual Fund
11-01-2023	\$89.60					\$22,053.27		Interest	Interest Earnings
12-01-2023	\$87.29					\$22,140.56		Interest	Interest Earnings
12-14-2023					(\$2,198.13)	\$19,942.43	KeyAnalytics	Professional Services	Admin Exp Charges 2022-23 Per Payment Request 8 From Cfd No 2019-2 Dtd 12/14/2023
12-21-2023		\$0.02				\$19,942.45		Change in Investment	Short Term Gains/Losses
01-02-2024	\$83.54					\$20,025.99		Interest	Interest Earnings
02-01-2024	\$81.46					\$20,107.45		Interest	Interest Earnings
02-13-2024					(\$2,198.13)	\$17,909.32	KeyAnalytics	Professional Services	Req 9 Admin Exp Charges Oct Dec-2023 Cfd No 2019-2
03-01-2024	\$71.31					\$17,980.63		Interest	Interest Earnings
04-01-2024	\$72.66					\$18,053.29		Interest	Interest Earnings
04-25-2024					(\$2,198.13)	\$15,855.16	KeyAnalytics	Professional Services	Via Check REQ 10 ADMIN EXP CHARGES JAN MAR 2024 PER REQUEST 10
05-01-2024	\$68.74					\$15,923.90		Interest	Interest Earnings
06-03-2024	\$64.25					\$15,988.15		Interest	Interest Earnings
	\$975.27	\$0.02	\$15,000.00	\$0.00	(\$23,876.27)	(\$7,900.98)			DATE RANGE BALANCE
<b>Subfund Total</b>	<b>\$1,610.04</b>	<b>\$0.02</b>	<b>\$45,600.00</b>	<b>\$0.00</b>	<b>(\$31,221.91)</b>	<b>\$15,988.15</b>	<b>Total for 230993003 - Administrative Expense Fund</b>		

**Subfund: 230993004 - Construction Fund School Facilities**

Date	Interest	Deposits	Transfers In	Transfers Out	Expenditures	Balance	Payee	Reference	Description
07-01-2023	\$61,239.92	\$2,838,093.19	\$24,267.51	\$0.00	(\$2,005,594.14)	\$918,006.48			BEGINNING BALANCE
07-03-2023	\$3,438.18					\$921,444.66		Interest	Interest Earnings
08-01-2023	\$3,606.16					\$925,050.82		Interest	Interest Earnings
09-01-2023	\$3,764.33					\$928,815.15		Interest	Interest Earnings
10-02-2023	\$3,660.51					\$932,475.66		Interest	Interest Earnings
11-01-2023	\$3,804.14					\$936,279.80		Interest	Interest Earnings
12-01-2023	\$3,705.82					\$939,985.62		Interest	Interest Earnings
12-21-2023		\$0.93				\$939,986.55		Change in Investment	Short Term Gains/Losses
12-21-2023		\$0.04				\$939,986.59		Change in Investment	Long Term Gains/Losses
01-02-2024	\$3,842.21					\$943,828.80		Interest	Interest Earnings
02-01-2024	\$3,839.32					\$947,668.12		Interest	Interest Earnings
03-01-2024	\$3,591.11					\$951,259.23		Interest	Interest Earnings


**Subfund: 230993004 - Construction Fund School Facilities**

Date	Interest	Deposits	Transfers In	Transfers Out	Expenditures	Balance	Payee	Reference	Description
04-01-2024	\$3,843.85					\$955,103.08		Interest	Interest Earnings
05-01-2024	\$3,727.46					\$958,830.54		Interest	Interest Earnings
06-03-2024	\$3,868.69					\$962,699.23		Interest	Interest Earnings
	\$44,691.78	\$0.97	\$0.00	\$0.00	\$0.00	\$44,692.75			DATE RANGE BALANCE
<b>Subfund Total</b>	<b>\$105,931.70</b>	<b>\$2,838,094.16</b>	<b>\$24,267.51</b>	<b>\$0.00</b>	<b>(\$2,005,594.14)</b>	<b>\$962,699.23</b>	<b>Total for 230993004 - Construction Fund School Facilities</b>		

**Subfund: 230993005 - Construction Fund EMWD**

Date	Interest	Deposits	Transfers In	Transfers Out	Expenditures	Balance	Payee	Reference	Description
07-01-2023	\$4,995.45	\$1,224,385.00	\$0.00	\$0.00	(\$1,225,949.61)	\$3,430.84			BEGINNING BALANCE
07-03-2023	\$12.85					\$3,443.69		Interest	Interest Earnings
08-01-2023	\$13.48					\$3,457.17		Interest	Interest Earnings
09-01-2023	\$14.07					\$3,471.24		Interest	Interest Earnings
10-02-2023	\$13.68					\$3,484.92		Interest	Interest Earnings
11-01-2023	\$14.22					\$3,499.14		Interest	Interest Earnings
12-01-2023	\$13.85					\$3,512.99		Interest	Interest Earnings
01-02-2024	\$14.36					\$3,527.35		Interest	Interest Earnings
02-01-2024	\$14.35					\$3,541.70		Interest	Interest Earnings
03-01-2024	\$13.42					\$3,555.12		Interest	Interest Earnings
04-01-2024	\$14.37					\$3,569.49		Interest	Interest Earnings
05-01-2024	\$13.93					\$3,583.42		Interest	Interest Earnings
06-03-2024	\$14.46					\$3,597.88		Interest	Interest Earnings
	\$167.04	\$0.00	\$0.00	\$0.00	\$0.00	\$167.04			DATE RANGE BALANCE
<b>Subfund Total</b>	<b>\$5,162.49</b>	<b>\$1,224,385.00</b>	<b>\$0.00</b>	<b>\$0.00</b>	<b>(\$1,225,949.61)</b>	<b>\$3,597.88</b>	<b>Total for 230993005 - Construction Fund EMWD</b>		

**Subfund: 230993007 - Residual Fund**

Date	Interest	Deposits	Transfers In	Transfers Out	Expenditures	Balance	Payee	Reference	Description
07-01-2023	\$1,215.63	\$0.00	\$77,218.89	(\$30,600.00)	\$0.00	\$47,834.52			BEGINNING BALANCE
07-03-2023	\$179.15					\$48,013.67		Interest	Interest Earnings
08-01-2023	\$187.91					\$48,201.58		Interest	Interest Earnings
09-01-2023	\$196.15					\$48,397.73		Interest	Interest Earnings
09-05-2023			\$53,485.39			\$101,883.12		Transfer In	Transfer from 220723000 Special Tax Fund
10-02-2023	\$373.48					\$102,256.60		Interest	Interest Earnings
10-27-2023				(\$15,000.00)		\$87,256.60		Transfer Out	Transfer To 230993003 Administrative Expense Fund
11-01-2023	\$407.27					\$87,663.87		Interest	Interest Earnings
12-01-2023	\$346.97					\$88,010.84		Interest	Interest Earnings
12-21-2023		\$0.09				\$88,010.93		Change in Investment	Short Term Gains/Losses
01-02-2024	\$359.75					\$88,370.68		Interest	Interest Earnings



**Subfund: 230993007 - Residual Fund**

Date	Interest	Deposits	Transfers In	Transfers Out	Expenditures	Balance	Payee	Reference	Description
02-01-2024	\$359.48					\$88,730.16		Interest	Interest Earnings
03-01-2024	\$336.24					\$89,066.40		Interest	Interest Earnings
04-01-2024	\$359.90					\$89,426.30		Interest	Interest Earnings
05-01-2024	\$349.00					\$89,775.30		Interest	Interest Earnings
06-03-2024	\$362.23					\$90,137.53		Interest	Interest Earnings
	\$3,817.53	\$0.09	\$53,485.39	(\$15,000.00)	\$0.00	\$42,303.01			DATE RANGE BALANCE
<b>Subfund Total</b>	<b>\$5,033.16</b>	<b>\$0.09</b>	<b>\$130,704.28</b>	<b>(\$45,600.00)</b>	<b>\$0.00</b>	<b>\$90,137.53</b>	<b>Total for 230993007 - Residual Fund</b>		

**Subfund: 230993008 - Cost of Issuance Fund**

Date	Interest	Deposits	Transfers In	Transfers Out	Expenditures	Balance	Payee	Reference	Description
07-01-2023	\$272.53	\$240,000.00	\$0.00	(\$24,267.51)	(\$216,005.02)	\$0.00			BEGINNING BALANCE
	\$0.00	\$0.00	\$0.00	\$0.00	\$0.00	\$0.00			DATE RANGE BALANCE
<b>Subfund Total</b>	<b>\$272.53</b>	<b>\$240,000.00</b>	<b>\$0.00</b>	<b>(\$24,267.51)</b>	<b>(\$216,005.02)</b>	<b>\$0.00</b>	<b>Total for 230993008 - Cost of Issuance Fund</b>		
<b>Fund Total</b>	<b>\$154,216.51</b>	<b>\$5,439,195.32</b>	<b>\$631,759.14</b>	<b>(\$631,759.14)</b>	<b>(\$3,896,514.41)</b>	<b>\$1,696,897.42</b>	<b>Total for CFD No. 2019-2 (Series 2022 Special Tax Bonds)</b>		
<b>Grand Total</b>	<b>\$154,216.51</b>	<b>\$5,439,195.32</b>	<b>\$631,759.14</b>	<b>(\$631,759.14)</b>	<b>(\$3,896,514.41)</b>	<b>\$1,696,897.42</b>	<b>Grand Total for Selected Funds/SubFunds</b>		

# **Exhibit G**

## **Annual Special Tax Roll for Fiscal Year 2024/2025**

Moreno Valley Unified School District  
Community Facilities District No. 2019-2  
Fiscal Year 2024/2025 Special Tax Roll

Tract	Lot	Assessor's Parcel Number	Maximum Special Tax	Assigned Special Tax
36708	56	482-711-001	\$3,225.79	\$2,727.94
36708	57	482-711-002	\$3,225.79	\$2,661.10
36708	58	482-711-003	\$3,225.79	\$2,909.32
36708	59	482-711-004	\$3,225.79	\$2,727.94
36708	68	482-711-006	\$3,225.79	\$2,727.94
36708	69	482-711-007	\$3,225.79	\$2,727.94
36708	70	482-711-008	\$3,225.79	\$2,661.10
36708	71	482-711-010	\$3,225.79	\$2,661.10
36708	72	482-711-011	\$3,225.79	\$2,909.32
36708	73	482-711-012	\$3,225.79	\$2,727.94
36708	114	482-711-014	\$3,225.79	\$2,727.94
36708	115	482-711-015	\$3,225.79	\$2,909.32
36708	116	482-711-016	\$3,225.79	\$2,727.94
36708	117	482-711-017	\$3,225.79	\$2,661.10
36708	74	482-711-019	\$3,225.79	\$2,727.94
36708	75	482-711-020	\$3,225.79	\$2,727.94
36708	76	482-711-021	\$3,225.79	\$2,727.94
36708	77	482-711-022	\$3,225.79	\$2,727.94
36708	78	482-711-023	\$3,225.79	\$2,727.94
36708	109	482-711-025	\$3,225.79	\$2,661.10
36708	110	482-711-026	\$3,225.79	\$2,909.32
36708	111	482-711-027	\$3,225.79	\$2,661.10
36708	112	482-711-028	\$3,225.79	\$2,909.32
36708	113	482-711-029	\$3,225.79	\$2,661.10
36708	60	482-711-031	\$3,225.79	\$2,727.94
36708	61	482-711-032	\$3,225.79	\$2,727.94
36708	62	482-711-033	\$3,225.79	\$2,727.94
36708	63	482-711-035	\$3,225.79	\$2,727.94
36708	64	482-711-036	\$3,225.79	\$2,909.32
36708	65	482-711-037	\$3,225.79	\$2,727.94
36708	66	482-711-038	\$3,225.79	\$2,909.32
36708	67	482-711-039	\$3,225.79	\$2,909.32
36708	8	482-711-041	\$3,225.79	\$2,909.32
36708	9	482-711-042	\$3,225.79	\$2,727.94
36708	10	482-711-043	\$3,225.79	\$2,909.32
36708	11	482-711-044	\$3,225.79	\$2,727.94
36708	49	482-711-046	\$3,225.79	\$2,727.94
36708	50	482-711-047	\$3,225.79	\$2,727.94
36708	51	482-711-048	\$3,225.79	\$2,661.10
36708	52	482-711-049	\$3,225.79	\$2,727.94
36708	12	482-711-051	\$3,225.79	\$2,727.94
36708	13	482-711-052	\$3,225.79	\$2,909.32

Moreno Valley Unified School District  
Community Facilities District No. 2019-2  
Fiscal Year 2024/2025 Special Tax Roll

Tract	Lot	Assessor's Parcel Number	Maximum Special Tax	Assigned Special Tax
36708	14	482-711-053	\$3,225.79	\$2,727.94
36708	46	482-711-055	\$3,225.79	\$2,727.94
36708	47	482-711-056	\$3,225.79	\$2,727.94
36708	48	482-711-057	\$3,225.79	\$2,661.10
36708	15	482-711-059	\$3,225.79	\$2,661.10
36708	16	482-711-060	\$3,225.79	\$2,909.32
36708	17	482-711-061	\$3,225.79	\$2,307.90
36708	18	482-711-062	\$3,225.79	\$2,307.90
36708	43	482-711-064	\$3,225.79	\$2,727.94
36708	44	482-711-065	\$3,225.79	\$2,909.32
36708	45	482-711-066	\$3,225.79	\$2,661.10
36708	1	482-711-068	\$3,225.79	\$2,909.32
36708	2	482-711-069	\$3,225.79	\$2,727.94
36708	3	482-711-070	\$3,225.79	\$2,727.94
36708	4	482-711-071	\$3,225.79	\$2,661.10
36708	5	482-711-072	\$3,225.79	\$2,909.32
36708	6	482-711-073	\$3,225.79	\$2,727.94
36708	7	482-711-074	\$3,225.79	\$2,661.10
36708	53	482-711-076	\$3,225.79	\$2,661.10
36708	54	482-711-077	\$3,225.79	\$2,727.94
36708	55	482-711-078	\$3,225.79	\$2,727.94
36708	79	482-712-001	\$3,225.79	\$2,727.94
36708	80	482-712-002	\$3,225.79	\$2,727.94
36708	81	482-712-003	\$3,225.79	\$2,727.94
36708	82	482-712-004	\$3,225.79	\$2,727.94
36708	83	482-712-005	\$3,225.79	\$2,909.32
36708	84	482-712-006	\$3,225.79	\$2,661.10
36708	85	482-712-008	\$3,225.79	\$2,661.10
36708	86	482-712-009	\$3,225.79	\$2,727.94
36708	87	482-712-010	\$3,225.79	\$2,727.94
36708	103	482-712-012	\$3,225.79	\$2,727.94
36708	104	482-712-013	\$3,225.79	\$2,909.32
36708	105	482-712-014	\$3,225.79	\$2,661.10
36708	106	482-712-015	\$3,225.79	\$2,909.32
36708	107	482-712-016	\$3,225.79	\$2,727.94
36708	108	482-712-017	\$3,225.79	\$2,727.94
36708	91	482-712-019	\$3,225.79	\$2,727.94
36708	92	482-712-020	\$3,225.79	\$2,727.94
36708	93	482-712-021	\$3,225.79	\$2,727.94
36708	94	482-712-022	\$3,225.79	\$2,661.10
36708	95	482-712-023	\$3,225.79	\$2,727.94
36708	96	482-712-024	\$3,225.79	\$2,661.10

Moreno Valley Unified School District  
Community Facilities District No. 2019-2  
Fiscal Year 2024/2025 Special Tax Roll

Tract	Lot	Assessor's Parcel Number	Maximum Special Tax	Assigned Special Tax
36708	97	482-712-025	\$3,225.79	\$2,909.32
36708	98	482-712-026	\$3,225.79	\$2,727.94
36708	99	482-712-027	\$3,225.79	\$2,909.32
36708	100	482-712-028	\$3,225.79	\$2,727.94
36708	101	482-712-029	\$3,225.79	\$2,909.32
36708	102	482-712-030	\$3,225.79	\$2,727.94
36708	88	482-712-032	\$3,225.79	\$2,727.94
36708	89	482-712-033	\$3,225.79	\$2,909.32
36708	90	482-712-034	\$3,225.79	\$2,727.94
36708	40	482-712-036	\$3,225.79	\$2,661.10
36708	41	482-712-037	\$3,225.79	\$2,727.94
36708	42	482-712-038	\$3,225.79	\$2,727.94
36708	19	482-712-040	\$3,225.79	\$2,307.90
36708	20	482-712-041	\$3,225.79	\$2,307.90
36708	21	482-712-042	\$3,225.79	\$2,307.90
36708	22	482-712-043	\$3,225.79	\$2,307.90
36708	34	482-712-045	\$3,225.79	\$2,727.94
36708	35	482-712-046	\$3,225.79	\$2,727.94
36708	36	482-712-047	\$3,225.79	\$2,727.94
36708	37	482-712-049	\$3,225.79	\$2,727.94
36708	38	482-712-050	\$3,225.79	\$2,909.32
36708	39	482-712-051	\$3,225.79	\$2,727.94
36708	23	482-712-053	\$3,225.79	\$2,307.90
36708	24	482-712-054	\$3,225.79	\$2,307.90
36708	25	482-712-055	\$3,225.79	\$2,307.90
36708	26	482-712-056	\$3,225.79	\$2,307.90
36708	27	482-712-057	\$3,225.79	\$2,307.90
36708	28	482-712-058	\$3,225.79	\$2,307.90
36708	29	482-712-059	\$3,225.79	\$2,307.90
36708	30	482-712-060	\$3,225.79	\$2,307.90
36708	31	482-712-062	\$3,225.79	\$2,661.10
36708	32	482-712-063	\$3,225.79	\$2,909.32
36708	33	482-712-064	\$3,225.79	\$2,727.94

<b>Total Parcels</b>	<b>117</b>
<b>Total Taxable Parcels</b>	<b>117</b>
<b>Total Maximum Annual Special Tax</b>	<b>\$377,417.60</b>
<b>Total Assigned Special Tax</b>	<b>\$316,237.90</b>