

Community Facilities District No. 2003-1 Annual Special Tax Report

Fiscal Year Ending June 30, 2024

Moreno Valley Unified School District

2024 / 2025



A division of California Financial Services

District Administration

Dr. Alejandro Ruvalcaba, Superintendent of Schools
Susana Lopez, Chief Business Official, Business Services
Moreno Valley Unified School District
25634 Alessandro Boulevard
Moreno Valley, CA 92553
T. (951) 571-7500

Fiscal Agent

U.S. Bank National Association
633 West Fifth Street, 24th Floor
Los Angeles, CA 90071
T. (213) 615-6002

Special Tax Administrator

KeyAnalytics
555 Corporate Drive, Suite 100
Ladera Ranch, CA 92694
T. (949) 282-1077

Special Assessment Questions
T. (877) 575-0265
propertytax@calschools.com

Bond Counsel

Stradling Yocca Carlson & Rauth LLP
660 Newport Center Dr #1600,
Newport Beach, CA 92660T
(949) 725-4000

Table of Contents

Introduction	1
I. CFD Background	3
A. Location	3
B. Formation	3
C. Bonds	5
II. Fiscal Year 2023/2024 Annual Special Tax	7
A. Special Tax Levy	7
B. Annual Special Tax Collections and Delinquencies	8
III. Fund and Account Activity and Balances	9
A. Fiscal Agent Accounts	9
B. Sources and Uses of Funds	11
IV. Senate Bill 165	12
A. Authorized Facilities	12
B. 2004 Special Tax Bonds	13
C. Series 2013 Special Tax Refunding Bonds	14
D. Special Tax Revenue Bonds Series 2024A	15
E. Special Taxes	16
V. Special Tax Requirement	19
A. Special Tax Requirement	19
B. Administrative Expense Budget	21
VI. Special Tax Classification	22
A. Developed Property	22
VII. Fiscal Year 2024/2025 Special Tax Levy	24

Exhibit A – First Amended Rate and Method of Apportionment

Exhibit B – CFD Boundary Map

Exhibit C – Assessor’s Parcel Maps

Exhibit D – Special Tax Revenue Bonds Series 2024A Debt Service Schedule

Exhibit E – Delinquent Annual Special Tax Report

Exhibit F – Summary of Transactions for Fiscal Agent Accounts

Exhibit G – Annual Special Tax Roll for Fiscal Year 2024/2025

Introduction

Community Facilities District No. 2003-1 (“CFD No. 2003-1”) of the Moreno Valley Unified School District (the “School District”) was formed pursuant to the terms and provisions of the “Mello-Roos Community Facilities Act of 1982”, as amended (the “Act”), being Chapter 2.5, Part 1, Division 2, Title 5 of the Government Code of the State of California. CFD No. 2003-1 is authorized under the Act to finance certain facilities (the “Authorized Facilities”) as established at the time of formation.

This Annual Special Tax Report (the “Report”) summarizes certain general and administrative information and analyzes the financial obligations of CFD No. 2003-1 for the purpose of establishing the Annual Special Tax Levy for Fiscal Year 2024/2025. The Annual Special Tax Levy is calculated pursuant to the First Amended Rate and Method of Apportionment (the “RMA”) which is attached to this Report as Exhibit A.

All capitalized terms not defined herein are used as defined in the RMA and/or Indenture of Trust (“Indenture”), dated February 1, 2024 between the School District and U.S. Bank, NA acting as Fiscal Agent (the “Fiscal Agent”).

This Report is organized into the following Sections:

Section I – CFD Background

Section I provides background information relating to the formation of CFD No. 2003-1 and the long-term obligations issued to finance the Authorized Facilities.

Section II – Fiscal Year 2023/2024 Special Tax Levy

Section II provides information regarding the levy and collection of Special Taxes for Fiscal Year 2023/2024 and an accounting of the remaining collections.

Section III – Fund and Account Balances

Section III examines the financial activity within the funds and accounts associated with CFD No. 2003-1.

Section IV – Senate Bill 165

Section IV provides information required under Senate Bill 165 (“SB 165”) regarding the initial allocation of bond proceeds and the expenditure of the Annual Special Taxes and bond proceeds utilized to fund the Authorized Facilities of CFD No. 2003-1 for Fiscal Year 2023/2024.

Section V – Special Tax Requirement

Section V calculates the Special Tax Requirement based on the obligations of CFD No. 2003-1 for Fiscal Year 2024/2025.

Section VI – Special Tax Classification

Section VI provides updated information regarding the Special Tax classification of parcels within CFD No. 2003-1.

Section VII – Fiscal Year 2024/2025 Special Tax Levy

Section VII provides the Fiscal Year 2024/2025 Special Tax levy based on updated Special Tax classifications and the Special Tax Requirement.

I. CFD Background

This Section provides background information regarding the formation of CFD No. 2003-1 and the bonds issued to fund the Authorized Facilities.

A. Location

CFD No. 2003-1 is located south of Highway 60, north of Fir Avenue, west of Morrison Street and east of Lasselle Street in the City of Moreno Valley (the “City”). CFD No. 2003-1 encompasses approximately 57.03 gross acres and approximately 53.71 net taxable acres. For reference, the boundary map of CFD No. 2003-1 is included as Exhibit B and the current Assessor’s Parcel maps are included as Exhibit C.

B. Formation

CFD No. 2003-1 was formed and established by the School District on October 21, 2003, under the Act, following a public hearing conducted by the Board of Education of the School District (the “Board”), as legislative body of CFD No. 2003-1, and a landowner election at which the qualified electors of CFD No. 2003-1 authorized CFD No. 2003-1 to incur bonded indebtedness in an amount not to exceed \$10,000,000 and approved the levy of Annual Special Taxes.

CFD No. 2003-1 was also formed in connection with a School Facilities Funding and Mitigation Agreement, dated October 21, 2003 (the “Mitigation Agreement”), by and between the School District, Tract 29504 LLC, Tract 29860 LLC and Young Homes of California, Inc. (along with Tract 29504 LLC and Tract 29860 LLC, “Developers”). In addition, CFD No. 2003-1 may finance the acquisition or construction of certain water and sewer facilities and improvements to be owned and operated by the Eastern Municipal Water District (“EMWD”), in accordance with a Joint Community Facilities Agreement dated as of October 21, 2003, by and among the School District, the Developers and EMWD.

The table below provides information related to the formation of CFD No. 2003-1.

**Board Actions Related to
Formation of CFD No. 2003-1**

Resolution	Board Meeting Date	Resolution No.
Resolution of Intention	August 19, 2003	2003-04-18
Resolution to Incur Bonded Indebtedness	August 19, 2003	2003-04-19
Resolution of Formation	October 21, 2003	2003-04-27
Bond Authorization	October 21, 2003	2003-04-28
Resolution Calling Election	October 21, 2003	2003-04-29
Ordinance Levying Special Taxes	November 18, 2003	Ordinance No. 2003-1

A Notice of Special Tax Lien was recorded in the real property records of the County of Riverside (“County”) on October 28, 2003, as Instrument No. 2003-848784 on all property within CFD No. 2003-1.

C. Bonds

1. 2004 Special Tax Bonds

On November 4, 2004 the 2004 Special Tax Bonds of the Moreno Valley Unified School District Community Facilities District No. 2003-1 (“2004 Bonds”) were issued in the amount of \$7,375,000. The 2004 Bonds were authorized and issued under and subject to the terms of the Fiscal Agent Agreement, dated October 1, 2004 (“2004 FAA”), and the Act (“2004 FAA”). The 2004 Bonds were issued to fund the Authorized Facilities of CFD No. 2003-1, fund a reserve fund for the 2004 Bonds and pay the costs of issuing the 2004 Bonds. For more information regarding the use of the 2004 Bond proceeds and the Authorized Facilities constructed please see Section IV of this Report.

2. Series 2013 Special Tax Refunding Bonds

On September 25, 2013 the Series 2013 Special Tax Refunding Bonds of the Moreno Valley Unified School District Community Facilities District No. 2003-1 (“2013 Bonds”) were issued in the amount of \$7,425,000. The 2013 Bonds were authorized and issued under and subject to the terms of the (“2013 FAA”) dated September 1, 2013 (“2013 FAA”) and the Act. The 2013 Bonds were issued to refund all of the outstanding 2004 Bonds on March 1, 2014 for interest savings and pay the costs of issuing the 2013 Bonds. For more information regarding the use of the 2013 Bond proceeds and please see Section IV of this Report.

3. Special Tax Revenue Bonds Series 2024A

On February 15, 2024 the Special Tax Revenue Bonds Series 2024A of the Moreno Valley Unified School District Community Facilities District No. 2003-1 (“2024 Bonds”) were issued in the amount of \$50,620,000. The 2024 Bonds were authorized and issued under and subject to the terms of the Indenture of Trust (“Indenture”) dated February 1, 2024 and the Act. The 2024 Bonds were issued to acquire certain special tax obligations (the “Local Obligations”) of community facilities districts (the “Districts”) formed by the Moreno Valley Unified School District (the “School District”), purchase the Surety Policy and purchase the Reserve Policy to fund the Reserve Fund for the Bonds. The Local Obligations are being issued to finance school facility improvements of the School District, refund the five outstanding series of bonds issued by CFD Nos. 2002-1, 2003-1, 2003-2, 2004-2, and 2004-6, and pay the costs of issuance of the Bonds. For more information regarding the use of the 2024 Bond proceeds, please see Section IV of this Report.

The 2024 Bonds are payable from the Net Special Tax Revenues levied on property within CFD No. 2003-1 according to the RMA. A copy of the debt service schedule of the 2024 Bonds is included as Exhibit D.

II. Fiscal Year 2023/2024 Annual Special Tax

Each Fiscal Year, CFD No. 2003-1 levies and collects Annual Special Taxes pursuant to the RMA in order to meet the obligation for that Fiscal Year. This Section provides a summary of the levy and collection of Annual Special Taxes in Fiscal Year 2023/2024.

A. Special Tax Levy

The Special Tax levy for Fiscal Year 2023/2024 is summarized by Special Tax classification in the table below.

Fiscal Year 2023/2024 Annual Special Tax Levy

Tax Class/Land Use	Taxable Unit	Number of Units/Acres	Assigned Annual Special Tax Rate	Total Assigned Annual Special Taxes
1 - Residential Property	Greater than 3,001 Sq. Ft.	54 Units	\$3,255.70 Per Unit	\$175,807.80
2 - Residential Property	2,801 Sq. Ft. to 3,000 Sq. Ft.	51 Units	\$3,144.26 Per Unit	160,357.26
3 - Residential Property	2,601 Sq. Ft. to 2,800 Sq. Ft.	28 Units	\$3,074.42 Per Unit	86,083.76
4 - Residential Property	2,401 Sq. Ft. to 2,600 Sq. Ft.	18 Units	\$2,991.20 Per Unit	53,841.60
5 - Residential Property	2,101 Sq. Ft. to 2,400 Sq. Ft.	20 Units	\$2,907.98 Per Unit	58,159.60
6 - Residential Property	1,900 Sq. Ft. to 2,100 Sq. Ft.	39 Units	\$2,686.58 Per Unit	104,776.62
7 - Residential Property	1,899 Sq. Ft. or Less	18 Units	\$2,491.92 Per Unit	44,854.56
8 - Non-Residential Property ^[1]	N/A	0.00 Acres	\$0.00 Per Acre	0.00
Total		228 Units		\$683,881.20

[1] Non-Residential Properties are levied at \$0.00 per Acre due to sufficient Special Tax Levy coverage from Residential Property. The Assigned Annual Special Tax Rate per the RMA is \$17,699.12 per Acre.

B. Annual Special Tax Collections and Delinquencies

Delinquent Annual Special Taxes for CFD No. 2003-1, as of June 30, 2024, for Fiscal Year 2023/2024 and prior Fiscal Years are summarized in the table below. Based on the Foreclosure Covenant outlined in the Indenture and the current delinquency rates, no parcels exceed the foreclosure threshold. A detailed listing of the Fiscal Year 2023/2024 Delinquent Annual Special Taxes, based on the year end collections and information regarding the Foreclosure Covenants is provided as Exhibit E.

CFD No. 2003-1 Annual Special Tax Collections and Delinquencies

Fiscal Year	Subject Fiscal Year					June 30, 2024	
	Aggregate Special Tax	Parcels Delinquent	Amount Collected	Amount Delinquent	Delinquency Rate	Remaining Amount Delinquent	Remaining Delinquency Rate
2019/2020	\$619,413.86	1	\$618,197.20	\$1,216.66	0.20%	\$0.00	0.00%
2020/2021	644,436.04	1	641,617.36	2,818.68	0.44%	0.00	0.00%
2021/2022	657,325.34	1	654,450.30	2,875.04	0.44%	0.00	0.00%
2022/2023	670,471.42	2	664,399.66	4,358.04	0.65%	1,425.48	0.21%
2023/2024	683,881.20	0	683,881.20	0.00	0.00%	0.00	0.00%

III. Fund and Account Activity and Balances

Special Taxes are collected by the County Tax Collector as part of the regular property tax bills. Once received by the County Tax Collector the Special Taxes are transferred to the School District where they are then deposited into the Special Tax Fund held with the Fiscal Agent. Special Taxes are periodically transferred to make debt service payments on the 2024 Bonds and pay other authorized costs. This Section summarizes the account activity and balances of the funds and accounts associated with CFD No. 2003-1.

A. Fiscal Agent Accounts

Funds and accounts associated with the 2024 Bonds are currently being held by the Fiscal Agent. These funds and accounts were established pursuant to the Indenture.

The balances, as of June 30, 2024, of the funds, accounts and subaccounts by the Fiscal Agent are listed in the following table. Exhibit F contains a detailed listing of the transactions within these funds for Fiscal Year 2023/2024.

**Fund and Account Balances
as of June 30, 2024**

Account Name	Account Number	Balance
Special Tax Fund	21728100-0	\$649,168.26
Interest Fund	21728100-1	0.00
Principal Fund	21728100-2	0.00
Redemption Fund	21728100-3	0.00
Administrative Expense Fund	21728100-4	32,512.23
Surplus Fund	21728100-5	258,619.98
Acquisition and Construction Fund	21728100-6	2,563,752.14
Costs of Issuance Account	21728100-7	618,195.63
Total		\$4,122,248.24

B. Sources and Uses of Funds

The sources and uses of funds collected and expended by CFD No. 2003-1 are limited based on the restrictions as described within the Indenture. The table below presents the sources and uses of all funds and accounts for CFD No. 2003-1 from July 1, 2023 through June 30, 2024. For a more detailed description of the sources and uses of funds please refer to Section 3 of the Indenture.

Fiscal Year 2023/2024 Sources and Uses of Funds

Sources	
Bond Proceeds ^[1]	\$3,458,428.84
Annual Special Tax Receipts	682,806.08
Investment Earnings	86,517.61
Total	\$769,323.69
Uses	
Interest Payments	(\$232,511.00)
Principal Payments	(5,637,800.00)
Authorized Facilities	0.00
Administrative Expenses	(121,300.34)
Total	(\$5,991,611.34)

[1] The Par Amount of the 2024 Bonds is \$8,066,814.92. Of this amount, \$711,962.85 were prior Funds on Hand.

[2] Of this amount, \$56,367.23 was used for the Cost of Issuance of the 2024 Bonds.

IV. Senate Bill 165

Senate Bill 165, or the Local Agency Special Tax and Bond Accountability Act (“SB 165”), requires any local special tax/local bond measure subject to voter approval contain a statement indicating the specific purposes of the Special Tax, require that the proceeds of the Special Tax be applied to those purposes, require the creation of an account into which the proceeds shall be deposited, and require an annual report containing specified information concerning the use of the proceeds. SB 165 only applies to CFDs authorized on or after January 1, 2001 in accordance with Sections 50075.1 and 53410 of the California Government Code.

A. Authorized Facilities

1. School Facilities

School Facilities to be owned and operated by the School District (the “School Facilities”) including, without limitation, classrooms, multi-purpose rooms, administration and auxiliary space, and interim housing, together with furniture, equipment and technology, needed by the School District in order to mitigate the impact on School Facilities of the student population to be generated as a result of the development of the Property, together with all land or interest in land required for the construction of such School Facilities and all land interest in land required to be provided by the School District as mitigation of environmental impacts associated with the development of such School Facilities, and central support and administrative facilities, transportation and special education facilities, including any incidental school administration and transportation center improvements.

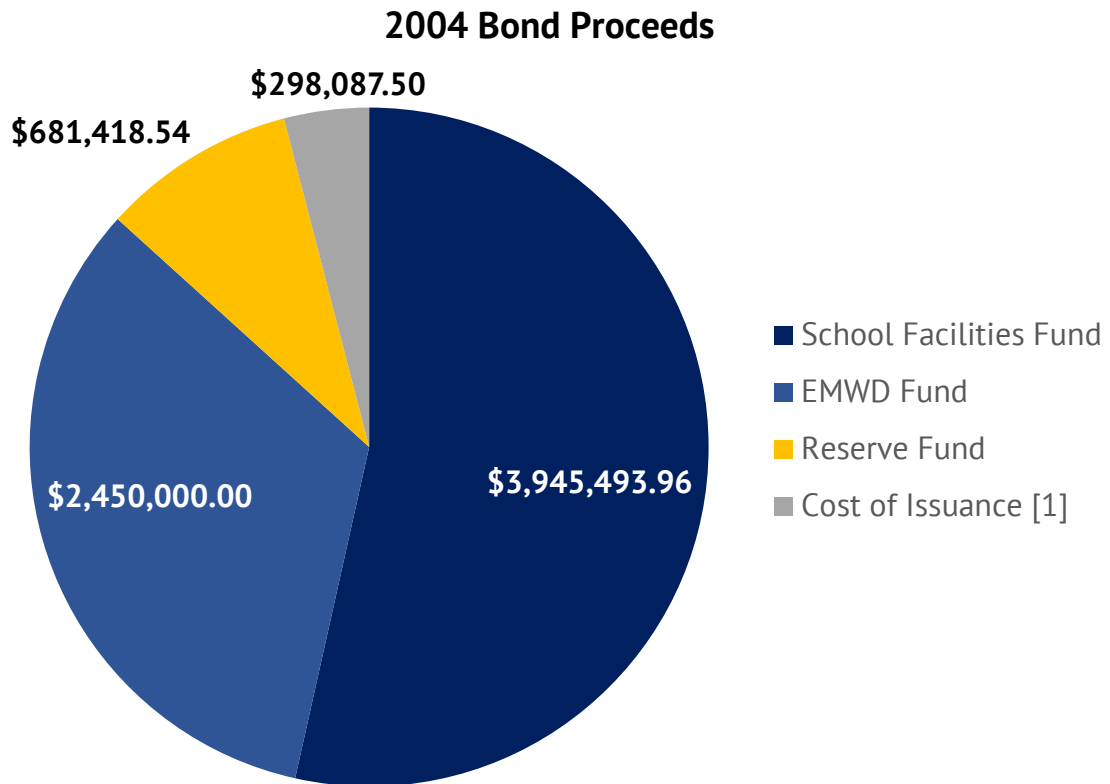
2. Water and Sewer Facilities

Water and sewer facilities to be owned and operated by the EMWD, including without limitation all appurtenances and appurtenant work relating thereto.

B. 2004 Special Tax Bonds

1. Bond Proceeds

In accordance with the 2004 FAA for the 2004 Bonds, the total bond proceeds of \$7,375,000 were deposited into the funds and accounts as shown in the graph below.



[1] This amount includes the Underwriter's Discount of \$146,687.50. the actual amount deposited into the Cost of Issuance Account was \$151,400.00

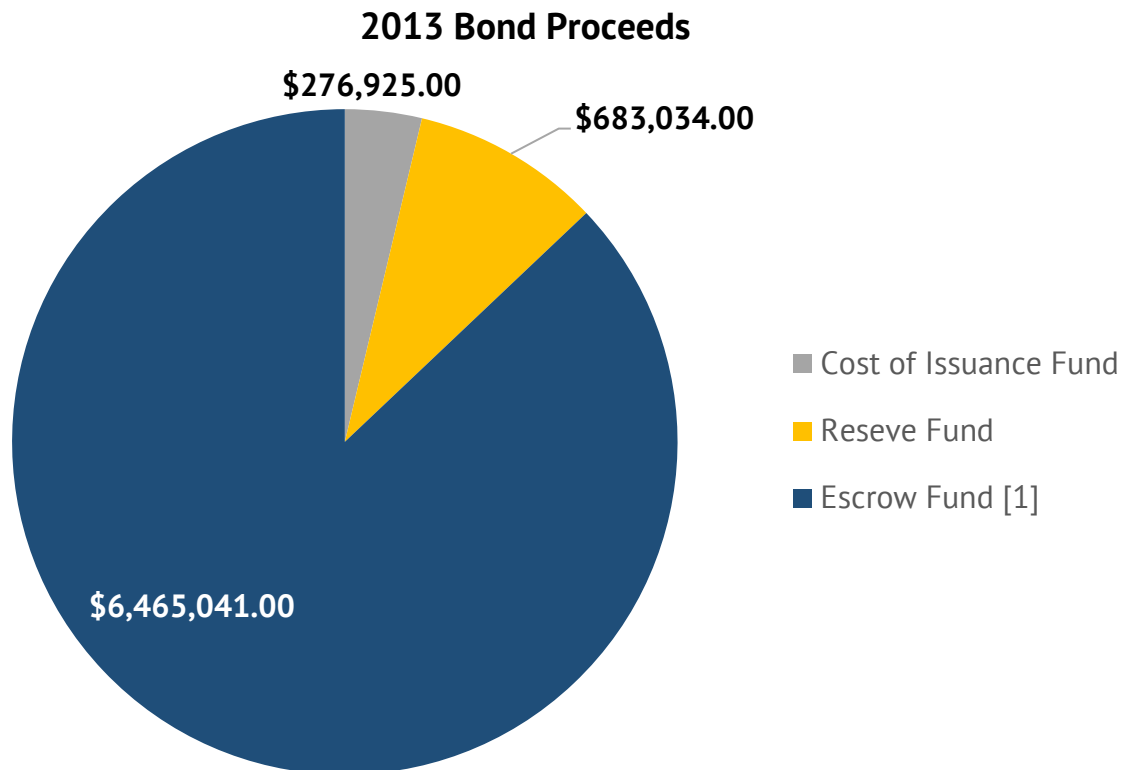
2. Construction Funds and Accounts

All construction funds generated from the issuance of the 2004 Bonds had been expended on the Authorized Facilities prior to July 1, 2018.

C. Series 2013 Special Tax Refunding Bonds

1. Bond Proceeds

In accordance with the FAA for the 2013 Bonds, the total bond proceeds of \$7,425,000 were deposited into the funds and accounts as shown in the graph below.



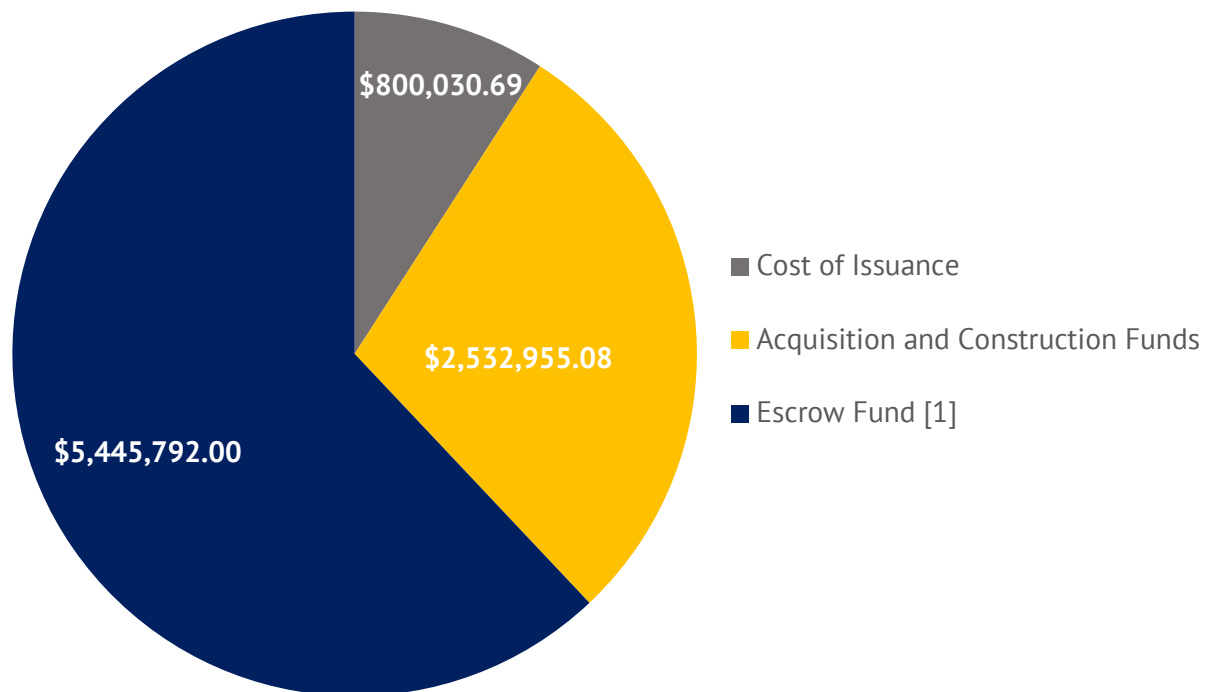
[1] Funds used to redeem the 2004 Bonds in full on March 1, 2014.

D. Special Tax Revenue Bonds Series 2024A

1. Bond Proceeds

In accordance with the Indenture for the 2024 Bonds, the total bond proceeds of \$8,778,777.77 were deposited into the funds and accounts as shown in the graph below.

2024 Bond Proceeds



[1] Funds (in addition to \$711,962.85 of funds on deposit) used to redeem the 2013 Bonds in full on April 1, 2024.

E. Special Taxes

CFD No. 2003-1 has covenanted to levy the Annual Special Taxes in accordance with the RMA. The Annual Special Taxes collected can only be used for the purposes as outlined in the FAA. The table below presents a detailed accounting of the Annual Special Taxes collected and expended by CFD No. 2003-1 within the Special Tax Fund created under the FAA of the 2013 Bonds.

Special Tax Fund (2013 Bonds)

Balance as of July 1, 2023		\$646,513.28
Accruals		\$426,390.04
Special Tax Deposits	\$417,131.72	
Investment Earnings	9,258.32	
Expenditures		(\$1,072,903.32)
Transfer to the Interest Account	(\$111,337.51)	
Transfer to the Principal Account	(395,000.00)	
Transfer to the 2013 Surplus School Facilities Fund	(127,613.99)	
Transfer to the 2024 Administrative Expense Fund	(24,347.03)	
Transfer to the 2024 Special Tax Fund	(414,604.79)	
Balance as of February 28, 2024		\$0.00

Pursuant to the FAA, any remaining funds in the Special Tax fund at the end of the Bond Year, which are not required to cure a delinquency in the payment of principal or interest on the Bonds, restore the Reserve Fund or pay current or pending Administrative Expenses shall be transferred to the Special Tax Remainder account. Funds within the Surplus Fund may be used for Authorized Facilities.

On February 29, 2024, the 2013 Bonds were refunded by the 2024 Bonds and all remaining funds within the 2013 Special Tax Fund were transferred to the 2024 Special Tax Fund and the 2013 Special Tax Fund was closed.

Surplus School Facilities Fund

Balance as of July 1, 2023		\$179,970.01
Accruals		
Transfer from the 2013 Special Tax Fund	\$127,613.99	
Investment Earnings	9,906.35	
Expenditures		(\$317,490.35)
Transfer to the 2024 Surplus School Facilities Fund	(\$316,277.01)	
Transfer to the 2024 Administrative Expense Fund	(1,213.34)	
Balance as of February 28, 2024		\$0.00

On February 29, 2024, all remaining funds within the 2013 Surplus Fund were transferred to the 2024 Surplus Fund and the account has been closed.

CFD No. 2003-1 has covenanted to levy the Annual Special Taxes in accordance with the RMA. The Annual Special Taxes collected can only be used for the purposes as outlined in the Indenture. The table below presents a detailed accounting of the Annual Special Taxes collected and expended by CFD No. 2003-1 within the Special Tax Fund created under the Indenture.

Special Tax Fund

Balance as of February 29, 2024		\$0.00
Accruals		
Special Tax Deposits	\$327,144.18	
Bond Proceeds	355,117.36	
Investment Earnings	4,055.58	
Expenditures		(\$37,148.86)
Transfer to the Administrative Expense Fund	(\$37,148.86)	
Balance as of June 30, 2024		\$649,168.26

Pursuant to the Indenture, any remaining funds in the Special Tax fund at the end of the Bond Year, which are not required to cure a delinquency in the payment of principal or interest on the Bonds, restore the Reserve Fund or pay current or pending Administrative Expenses shall be transferred to the Special Tax Remainder account. Funds within the Surplus School Facilities Fund may be used for Authorized Facilities of CFD No. 2003-1.

Surplus School Facilities Fund

Balance as of February 29, 2024		\$0.00
Accruals		\$258,619.98
Bond Proceeds	\$255,513.79	
Investment Earnings	3,106.19	
Expenditures		\$0.00
Balance as of June 30, 2024		\$258,619.98

V. Special Tax Requirement

This Section outlines the calculation of the Special Tax Requirement of CFD No. 2003-1 based on the financial obligations for Fiscal Year 2024/2025.

A. Special Tax Requirement

The Annual Special Taxes of CFD No. 2003-1 are calculated in accordance and pursuant to the RMA. Pursuant to the Indenture, any amounts not required to pay Administrative Expenses and Debt Service on the 2024 Bonds may be used to purchase/construct the Authorized Facilities of CFD No. 2003-1. The table on the following page shows the calculation of the Special Tax Requirement for Fiscal Year 2024/2025.

Special Tax Requirement for CFD No. 2003-1

Fiscal Year 2023/2024 Remaining Sources		\$649,168.26
Balance of Special Tax Fund	\$649,168.26	
Balance of Interest Fund	0.00	
Balance of Principal Fund	0.00	
Anticipated Special Taxes	0.00	
Fiscal Year 2023/2024 Remaining Obligations		(\$649,168.26)
September 1, 2024 Interest Payment	(\$2,941.48)	
September 1, 2024 Principal Payment	(539,378.04)	
Direct Construction of Authorized Facilities	(106,848.74)	
Fiscal Year 2023/2024 Surplus (Reserve Fund Draw)		\$0.00
Fiscal Year 2024/2025 Obligations		(\$697,558.94)
Administrative Expense Budget	(\$37,891.83)	
Anticipated Special Tax Delinquencies ^[1]	0.00	
March 1, 2025 Interest Payment	(554.04)	
March 1, 2025 Principal Payment	(50,901.57)	
September 1, 2025 Interest Payment	(8,030.00)	
September 1, 2025 Principal Payment	(491,155.50)	
Direct Construction of Authorized Facilities	(159,927.57)	
Fiscal Year 2024/2025 Special Tax Requirement		\$697,558.94

[1] Assumes the Year End Fiscal Year 2023/2024 delinquency rate of 0.00%.

B. Administrative Expense Budget

Each year a portion of the Annual Special Tax levy is used to pay for the administrative expenses incurred by the School District to levy the Annual Special Tax and administer the debt issued to finance Authorized Facilities. The estimated Fiscal Year 2024/2025 Administrative Expenses are shown in the table below.

Fiscal Year 2024/2025 Budgeted Administrative Expenses

Administrative Expense	Budget
District Staff and Expenses	\$21,718.58
Consultant/Trustee Expenses	11,000.00
County Tax Collection Fees	173.25
Contingency for Legal	5,000.00
Total Expenses	\$37,891.83

VI. Special Tax Classification

Each Fiscal Year, parcels within CFD No. 2003-1 are assigned an Annual Special Tax classification based on the parameters outlined in the RMA. This Section outlines how parcels are classified and the amount of Taxable Property within CFD No. 2003-1.

A. Developed Property

Pursuant to the RMA, a parcel is considered to be classified as Developed Property once a Building Permit is issued on or prior to May 1st of the prior Fiscal Year. The table below summarizes the number of parcels with Building Permits issued and the fiscal year those parcels were initially classified as Developed Property.

**Summary of Parcels
Classified as Developed Property
Fiscal Year 2024/2025**

Initial Tax Year	Land Use	Number of Units
2004/2005	Residential Property	213
2005/2006	Residential Property	14
2006/2007	Residential Property	1
Total		228

Building Permits have been issued for 228 Units by the City within CFD No. 2003-1. According to the County Assessor, all property zoned for residential development within CFD No. 2003-1 has been built and completed. The table below summarizes the Special Tax classification for the Units within CFD No. 2003-1.

**Fiscal Year 2024/2025
Special Tax Classification**

Tax Class	Land Use	Number of Units/Acres
1	Residential Property	54 Units
2	Residential Property	51 Units
3	Residential Property	28 Units
4	Residential Property	18 Units
5	Residential Property	20 Units
6	Residential Property	39 Units
7	Residential Property	18 Units
<i>Subtotal Residential Property</i>		<i>228 Units</i>
8	Non-Residential Property	0.00 Acres
<i>Subtotal Non- Residential Property</i>		<i>0.00 Acres</i>
Total		228 Units

VII. Fiscal Year 2024/2025 Special Tax Levy

Each Fiscal Year, the Special Tax is levied up to the maximum rate, as determined by the provisions of the RMA, in the amount needed to satisfy the Special Tax Requirement.

Based on the Special Tax Requirement listed in Section V, CFD No. 2003-1 will levy at the Assigned Annual Special Tax rate allowable for each parcel classified as Developed Property. The Assigned Annual Special Tax rate escalates annually by 2%. The special tax roll, containing a listing of each parcel’s Assigned Special Tax and Maximum Special Tax, calculated pursuant to the RMA, can be found attached as Exhibit G.

A summary of the Annual Special Tax levy for Fiscal Year 2024/2025 by Special Tax classification as determined by the RMA for CFD No. 2003-1 can be found on the table below.

Fiscal Year 2024/2025 Annual Special Tax Levy

Tax Class/Land Use	Taxable Unit	Number of Units/Acres	Assigned Annual Special Tax Rate	Total Assigned Annual Special Taxes
1 - Residential Property	Greater than 3,001 Sq. Ft.	54 Units	\$3,320.82 Per Unit	\$179,324.28
2 - Residential Property	2,801 Sq. Ft. to 3,000 Sq. Ft.	51 Units	\$3,207.14 Per Unit	163,564.14
3 - Residential Property	2,601 Sq. Ft. to 2,800 Sq. Ft.	28 Units	\$3,135.90 Per Unit	87,805.20
4 - Residential Property	2,401 Sq. Ft. to 2,600 Sq. Ft.	18 Units	\$3,051.02 Per Unit	54,918.36
5 - Residential Property	2,101 Sq. Ft. to 2,400 Sq. Ft.	20 Units	\$2,966.14 Per Unit	59,322.80
6 - Residential Property	1,900 Sq. Ft. to 2,100 Sq. Ft.	39 Units	\$2,740.32 Per Unit	106,872.48
7 - Residential Property	1,899 Sq. Ft. or Less	18 Units	\$2,541.76 Per Unit	45,751.68
8 - Non-Residential Property ^[1]	N/A	0.00 Acres	\$0.00 Per Acre	0.00
Total		228 Units		\$697,558.94

[1] Non-Residential Properties are levied at \$0.00 per Acre due to sufficient Special Tax Levy coverage from Residential Property. The Assigned Annual Special Tax Rate per the RMA is \$18,053.10 per Acre.

[https://calschools.sharepoint.com/cfs/unregulated/moreno_valley/developer_revenue/cfd_admin/cfd no. 2003-1/fy 2024-25/moreno valley usd_cfd2003-1_fy20242025_specialtaxreport_d1.docx](https://calschools.sharepoint.com/cfs/unregulated/moreno_valley/developer_revenue/cfd_admin/cfd_no.2003-1/fy_2024-25/moreno_valley_usd_cfd2003-1_fy20242025_specialtaxreport_d1.docx)

Exhibit A

First Amended Rate and Method of Apportionment

FIRST AMENDED RATE AND METHOD OF APPORTIONMENT FOR
MORENO VALLEY UNIFIED SCHOOL DISTRICT
COMMUNITY FACILITIES DISTRICT NO. 2003-1

A Special Tax as hereinafter defined shall be levied on all Assessor's Parcels within Community Facilities District No. 2003-1 ("CFD No. 2003-1") of the Moreno Valley Unified School District ("School District") and collected each Fiscal Year commencing in Fiscal Year 2004-2005, in an amount determined by the School District, through the application of this First Amended Rate and Method of Apportionment as described below. All of the real property within CFD No. 2003-1, unless exempted by law or by the provisions hereof, shall be taxed for the purposes, to the extent and in the manner herein provided.

A. DEFINITIONS

The terms hereinafter set forth have the following meanings:

"Acre or Acreage" means the land area of an Assessor's Parcel as shown on an Assessor's Parcel Map. If the land area is not shown on an Assessor's Parcel Map, the land area shown on the applicable final map, parcel map, condominium plan, or other recorded County map shall be used. If the acreage information supplied by these alternative sources is not available, or in conflict, the acreage used shall be determined by the Assistant Superintendent of Business Services or a designee.

"Act" means the Mello-Roos Community Facilities Act of 1982, as amended, being Chapter 2.5, Division 2 of Title 5 of the Government Code of the State of California.

"Administrative Expenses" means the following actual or reasonably estimated costs directly related to the administration of CFD No. 2003-1: the costs of computing the Special Taxes and preparing the annual Special Tax collection schedules (whether by the School District or designee thereof or both); the costs of collecting the Special Taxes (whether by the County or otherwise); the costs of remitting the Special Taxes to the Trustee; the costs of the Trustee (including its legal counsel) in the discharge of the duties required of it under the Indenture; the costs to the School District, CFD No. 2003-1 or any designee thereof of complying with arbitrage rebate requirements; the costs to the School District, CFD No. 2003-1 or any designee thereof of complying with School District, CFD No. 2003-1 or obligated persons disclosure requirements associated with applicable federal and state securities laws and of the Act; the costs associated with preparing Special Tax disclosure statements and responding to public inquiries regarding the Special Taxes; the costs of the School District, CFD No. 2003-1 or any designee thereof related to an appeal of the Special Tax; the costs associated with the release of funds from an escrow account; and the School District's annual administration fees and third party expenses. Administrative Expenses shall also include amounts estimated or advanced by the School District or CFD No. 2003-1 for any other administrative purposes of CFD No. 2003-1, including attorney's fees and other costs related to commencing and pursuing to completion any foreclosure of delinquent Special Taxes.

"Assessor's Parcel" means a lot or parcel shown on an Assessor's Parcel Map with an assigned Assessor's parcel number.

"Assessor's Parcel Map" means an official map of the County Assessor of the County designating parcels by Assessor's Parcel number.

"Assistant Superintendent of Business Services" means the Assistant Superintendent of Business Services of the Moreno Valley Unified School District or his or her designee.

"Assigned Special Tax" means the Special Tax for each Assessor's Parcel of Developed Property, as determined in accordance with Section C below.

"Backup Special Tax" means the Special Tax applicable to each Assessor's Parcel of Developed Property, as determined in accordance with Section C below.

"Bonds" means any bonds or other debt (as defined in Section 53317(d) of the Act), whether in one or more series, issued by CFD No. 2003-1 under the Act which are secured by Special Taxes.

"CFD No. 2003-1" means the Moreno Valley Unified School District Community Facilities District No. 2003-1.

"City" means the City of Moreno Valley.

"County" means the County of Riverside.

"Developed Floor Area" means the total building square footage of the building(s) located on an Assessor's Parcel, measured from outside wall to outside wall, exclusive of overhangs, porches, patios, garages, carports, or similar spaces attached to the building. The determination of Developed Floor Area shall be made by reference to the building permit(s) issued for such Assessor's Parcel.

"Developed Property" means, for each Fiscal Year, all Taxable Property for which a building permit for new construction was issued prior to May 1st of the prior Fiscal Year.

"Final Map" means a subdivision of property by recordation of a final map, parcel map, or lot line adjustment, pursuant to the Subdivision Map Act (California Government Code Section 66410 *et seq.*), an applicable local ordinance or recordation of a condominium plan pursuant to California Civil Code 1352 that creates individual lots for which building permits may be issued without further subdivision.

"Fiscal Year" means the period starting July 1 and ending on the following June 30.

"Indenture" means the indenture, fiscal agent agreement, resolution or other instrument pursuant to which Bonds are issued, as modified, amended and/or supplemented from time to time.

“Land Use Category” means any of the categories listed in Table 1.

“Maximum Special Tax” means the Maximum Special Tax, determined in accordance with Section C below, that shall be levied in any Fiscal Year on any Assessor's Parcel.

“Non-Residential Property” means all Assessor Parcels of Developed Property for which a building permit was issued for any type of non-residential use.

“Outstanding Bonds” means all Bonds which are deemed to be outstanding under the Indenture.

“Property Owner Association Property” means, for each Fiscal Year, any property within the boundaries of CFD No. 2003-1 that is owned by or irrevocably dedicated to a property owner association, including any master or sub-association as shown on the equalized roll of the County which is available on or about July 1st of the Fiscal Year.

“Proportionately” means, for Developed Property, that the ratio of the actual Special Tax levy to the Maximum Special Tax is equal for all Assessor's Parcels of Developed Property whose Maximum Special Tax is derived by the application of the Backup Special Tax. For Undeveloped Property "Proportionately" means that the ratio of the actual Special Tax levy per Acre to the Maximum Special Tax per Acre is equal for all Assessor's Parcels of Undeveloped Property.

“Proposed Area of Annexation” means the area identified on the boundary map of CFD No. 2003-1 identified as a proposed future annexation into CFD No. 2003-1.

“Public Property” means, for each Fiscal Year, any property within the boundaries of CFD No. 2003-1 that is (i) used for rights-of-way or any other purpose and is owned by or irrevocably offered for dedication to the federal government, the State of California, the County, the City or any other public agency as shown on the equalized roll of the County which is available on or about July 1st of the Fiscal Year or (ii) encumbered by an unmanned utility easement making impractical its utilization for other than the purpose set forth in the easement as shown on the equalized roll of the County which is available on or about July 1st of the Fiscal Year, provided however that any property leased by a public agency to a private entity and subject to taxation under Section 53340.1 of the Act shall be taxed and classified in a Land Use Category in accordance with its zoning or use which ever is greater.

“Residential Property” means all Assessor Parcels of Developed Property for which a building permit has been issued for purposes of constructing one or more residential dwelling units.

“School District” means the Moreno Valley Unified School District.

“Special Tax” means the special tax to be levied in each Fiscal Year on each Assessor's Parcel of Taxable Property in accordance with Section D.

“Special Tax Requirement” means that amount required in any Fiscal Year for CFD No. 2003-1 to: (i) pay debt service on all Outstanding Bonds due in the calendar year that commences in such Fiscal Year; (ii) pay periodic costs on the Bonds, including but not limited to, credit enhancement and rebate payments on the Bonds; (iii) pay Administrative Expenses; (iv) pay any amounts required to establish or replenish any reserve funds for all Outstanding Bonds; (v) pay directly for acquisition or construction of school facilities to accommodate students from development in CFD No. 2003-1 eligible under the Act as reasonably determined by the District so long as the inclusion of such amount does not cause an increase in the Special Tax attributable to Undeveloped Property; (vi) pay for reasonably anticipated delinquent Special Taxes based on the delinquency rate of Special Taxes levied in the previous Fiscal Year, less (vii) a credit for funds available to reduce the annual Special Tax levy, as determined by the Assistant Superintendent of Business Services pursuant to the Indenture.

"State" means the State of California.

“Taxable Property” means all of the Assessor's Parcels within the boundaries of CFD No. 2003-1 which have not been prepaid pursuant to Section I or, which are not exempt from the Special Tax pursuant to law or Section E below.

“Trustee” means the trustee or fiscal agent under the Indenture.

“Undeveloped Property” means, for each Fiscal Year, all Taxable Property not classified as Developed Property as shown on the equalized roll of the County which is available on or about July 1st of the Fiscal Year.

B. ASSIGNMENT TO LAND USE CATEGORIES

Each Fiscal Year, all Taxable Property within CFD No. 2003-1 shall be classified as Developed Property or Undeveloped Property, and shall be subject to Special Taxes in accordance with this First Amended Rate and Method of Apportionment determined pursuant to Sections C and D below.

Assessor Parcels of Developed Property shall further be classified as Residential Property or Non-Residential Property. An Assessor Parcel of Residential Property shall further be classified to its appropriate Land Use Category based on the Developed Floor Area of such Assessor Parcel.

C. MAXIMUM SPECIAL TAX RATE

1. **Developed Property**

a. Maximum Special Tax

The Maximum Special Tax for each Assessor's Parcel of Residential Property that is classified as Developed Property shall be the greater of (i) the amount derived by application of the Assigned Special Tax or (ii) the amount derived by application of the Backup Special Tax.

The Maximum Special Tax for each Assessor Parcel of Non-Residential Property shall be the Assigned Special Tax described in Table 1.

b. Assigned Special Tax

The Assigned Special Tax for each Assessor Parcel of Developed Property is shown in Table 1 below.

TABLE 1
Assigned Special Taxes for Developed Property
Fiscal Year 2003/04

Land Use Category	Taxable Unit		Assigned Special Tax Per Taxable Unit
1 - Residential Property	D/U	3,001 sq. ft. or greater	\$2,191
2 - Residential Property	D/U	2,801 sq. ft. to 3,000 sq. ft.	\$2,116
3 - Residential Property	D/U	2,601 sq. ft. to 2,800 sq. ft.	\$2,069
4 - Residential Property	D/U	2,401 sq. ft. to 2,600 sq. ft.	\$2,013
5 - Residential Property	D/U	2,101 sq. ft. to 2,400 sq. ft.	\$1,957
6 - Residential Property	D/U	1,900 sq. ft. to 2,100 sq. ft.	\$1,808
7 - Residential Property	D/U	1,899 sq. ft. or less	\$1,677
8 - Non - Residential Property	Acre	N/A	\$11,911

c. Backup Special Tax

When a Final Map is recorded within CFD No. 2003-1, the Backup Special Tax for the Assessor Parcels of Residential Property within such Final Map area shall be determined. The owner of the property within the Final Map area shall provide the Assistant Superintendent of Business Services a copy of the recorded Final Map and a listing of the square footage of all lots within such Final Map prior to the first request for a certificate of compliance from the District.

If the Proposed Area of Annexation does not annex into CFD No. 2003-1, the Back Up Special Tax per Assessor Parcel of Residential Property within a Final Map shall be determined by multiplying \$11,911 for Fiscal Year 2003/04 by the total Acreage of Taxable Property excluding the Acreage associated with Non-Residential Property, Public Property and Property Owner's Association Property in such Final Map and dividing such amount by the number of Assessor Parcels that are or are expected to be Residential Property (i.e., the number of residential lots) within such Final Map.

If the Proposed Area of Annexation does annex into CFD No. 2003-1, the Back Up Special Tax per Assessor Parcel of Residential Property within a Final Map shall be determined by multiplying \$11,870 for Fiscal Year 2003/04 by the total Acreage of Taxable Property excluding the Acreage associated with Non-Residential Property, Public Property and Property Owner's Association Property in such Final Map and dividing such amount by the number of Assessor Parcels that are or are expected to be Residential Property (i.e., the number of residential lots) within such Final Map.

Notwithstanding the foregoing, if all or any portion of the Final Map(s) described in the preceding paragraph is subsequently changed or modified, then the Backup Special Tax for each Assessor's Parcel of Residential Property in such Final Map area that is changed or modified shall be a rate per square foot of Acreage calculated as follows:

1. Determine the total Backup Special Taxes anticipated to apply to the changed or modified Final Map area prior to the change or modification.
2. The result of paragraph 1 above shall be divided by the total Acreage of Taxable Property excluding the Acreage associated with Non-Residential Property, Public Property and Property Owner Association Property which is ultimately expected to exist in such changed or modified Final Map area, as reasonably determined by the Assistant Superintendent of Business Services.
3. The result of paragraph 2 above shall be divided by 43,560. The result is the Backup Special Tax per square foot of Acreage which shall be applicable to Assessor's Parcels of Developed Property classified as Residential Property in such changed or modified Final Map area for all remaining Fiscal Years in which the Special Tax may be levied.

d. Escalation

Commencing in January of 2004 to be effective for Fiscal Year 2004/05, the Assigned Special Taxes and the Backup Special Tax shall escalate by two percent (2%) annually and annually thereafter.

2. Undeveloped Property

a. Maximum Special Tax

If the Proposed Area of Annexation does not annex into CFD No. 2003-1, the Maximum Special Tax for Undeveloped Property within CFD 2003-1 shall be \$11,911 per Acre. If the Proposed Area of Annexation does annex into CFD No. 2003-1, the Maximum Special Tax for Undeveloped Property within CFD 2003-1 shall be \$11,870 per Acre.

b. Escalation

Commencing in January of 2004 to be effective for Fiscal Year 2004/05, the Maximum Special Tax for Undeveloped Property shall escalate by two percent (2%) annually and annually thereafter.

D. METHOD OF APPORTIONMENT OF THE SPECIAL TAX

Commencing with Fiscal Year 2004-2005 and for each following Fiscal Year, the School District shall levy the Special Tax as follows:

First: The Special Tax shall be levied on each Assessor's Parcel of Developed Property at the applicable Assigned Special Tax;

Second: If additional moneys are needed to satisfy the Special Tax Requirement after the first step has been completed, the Special Tax shall be levied Proportionately on each Assessor's Parcel of Undeveloped Property at up to 100% of the Maximum Special Tax for Undeveloped Property;

Third: If additional moneys are needed to satisfy the Special Tax Requirement after the first two steps have been completed, then the levy of the Special Tax on each Assessor's Parcel of Developed Property whose Maximum Special Tax is determined through the application of the Backup Special Tax shall be increased Proportionately from the Assigned Special Tax up to the Maximum Special Tax for each such Assessor's Parcel;

E. EXEMPTIONS

If the Proposed Area of Annexation does not annex into CFD No. 2003-1, no Special Tax shall be levied on up to 17.06 Acres of Public Property, Property Owner Association Property and lot 30 of Tract 29860-F. If the Proposed Area of Annexation does annex into CFD No. 2003-1, no Special Tax shall be levied on up to 20.25 Acres of Public Property and Property Owner Association Property. Tax-exempt status will be irrevocably assigned by the Assistant Superintendent of Business Services in the chronological order in which property becomes Public Property or Property Owner Association Property. Property that is not exempt from Special Taxes under this section shall be required to prepay the Special Tax

in full at the then applicable rate per acre for Undeveloped Property pursuant to Section H.1. In the event the prepayment is not made pursuant to the preceding sentence, the Assessor parcels will be subject to taxation as Undeveloped Property pursuant to Step 2 of Section 3.

F. REVIEW/APPEAL COMMITTEE

The School District shall establish as part of the proceedings and administration of CFD No. 2003-1 a special three-member Review/Appeal Committee. Any landowner or resident who feels that the amount of the Special Tax, as to their Assessor's Parcel, is in error, may file a notice with the Review/Appeal Committee appealing the amount of the Special Tax levied on such Assessor Parcel provided such appeal may relate to the Special Tax levy for no more than the three (3) most recent Fiscal Years. The Review/Appeal Committee shall interpret this First Amended Rate and Method of Apportionment and make determinations relative to the annual administration of the Special Tax and any landowner or resident appeals, as herein specified. The decision of the Review/Appeal Committee shall be final and binding as to all persons.

G. MANNER OF COLLECTION

The Special Tax will be collected in the same manner and at the same time as ordinary *ad valorem* property taxes; provided, however, that CFD No. 2003-1 may directly bill the Special Tax, may collect Special Taxes at a different time or in a different manner if necessary to meet its financial obligations, and may covenant to foreclose and may actually foreclose on delinquent Assessor's Parcels as permitted by the Act.

H. EXCESS ASSIGNED ANNUAL SPECIAL TAX FROM DEVELOPED PROPERTY

In any Fiscal Year, when proceeds of Assigned Annual Special Tax for Developed Property are greater than principal, interest and Administrative Expenses such amount shall be available for the School District. The School District shall use proceeds for acquisition, construction or financing school facilities in accordance with the Act and other applicable law as determined by the School District.

I. PREPAYMENT OF SPECIAL TAX

The following definitions applies to this Section I:

“Outstanding Bonds” means all previously issued bonds issued and secured by the levy of Special Taxes, which will remain outstanding after the first interest and/or principal payment date following the current Fiscal Year, excluding bonds to be redeemed at a later date with the proceeds of prior prepayments of Maximum Special Taxes.

1. Prepayment in Full

The Maximum Special Tax obligation may only be prepaid and permanently satisfied by an Assessor's Parcel of Developed Property, Undeveloped Property for which a building permit has been issued, Religious Property, Public Property and/or Property Owner's Association Property that is not Exempt Property pursuant to Section E. The Maximum Special Tax obligation applicable to such Assessor's Parcel may be fully prepaid and the obligation of the Assessor's Parcel to pay the Special Tax permanently satisfied as described herein; provided that a prepayment may be made only if there are no delinquent Special Taxes with respect to such Assessor's Parcel at the time of prepayment. An owner of an Assessor's Parcel intending to prepay the Maximum Special Tax obligation shall provide the Assistant Superintendent of Business Services with written notice of intent to prepay, and within five (5) days of receipt of such notice, the Assistant Superintendent of Business Services shall notify such owner of the amount of the non-refundable deposit determined to cover the cost to be incurred by CFD No. 2003-1 in calculating the proper amount of a prepayment. Within fifteen (15) days of receipt of such non-refundable deposit, the Assistant Superintendent of Business Services shall notify such owner of the prepayment amount of such Assessor's Parcel.

- a) The prepayment amount for an Assessor's Parcel will be equal to the present value of the Assigned Special Tax of such Assessor's Parcel and the amount determined pursuant to Section I.1.c., if applicable, using a discount rate equal to the weighted average interest rate on the Outstanding Bonds and the remaining term for which the Special Tax may be levied pursuant to Section I.
- b) A reasonable administrative fee (net of the non-refundable deposit) for determining such prepayment and the call premium, if any, as provided in the bond indenture shall be added to the amount determined in Section I.1.a. at the date of prepayment to determine the total prepayment amount due. The total prepayment amount shall be distributed in accordance with the Indenture.
- c) If at the date of the prepayment calculation all or a portion of the Backup Special Tax is being levied, the Assessor's Parcel seeking prepayment as a result of the total Residential Property units within CFD No. 2003-1 at buildout being less than the total estimated residential units that were assumed when the Bonds were issued as determined by the Assistant Superintendent of Business Services, that portion of the Backup Special Tax being levied in excess of the Assigned Special Tax for such Assessor's Parcel shall be added to the Assigned Special Tax in Section I.1.a. for purposes of calculating the prepayment amount.

Upon cash payment of the prepayment amount due pursuant to Section I.1.b. and upon owner providing confirmation from the County to the Assistant Superintendent of Business Services that the current Fiscal Year's Special Tax levy for such Assessor's Parcel has been paid, the School District shall cause a suitable notice to be recorded in compliance with the Act, to indicate the prepayment of Special Taxes and the release of the Special Tax lien on

such Assessor's Parcel, and the obligation of such Assessor's Parcel to pay the Special Tax shall cease.

Notwithstanding the foregoing, no Special Tax prepayment shall be allowed unless the amount of Maximum Special Taxes that may be levied on Taxable Property both prior to and after the proposed prepayment is at least 1.1 times the maximum annual debt service on all Outstanding Bonds.

2. Prepayment in Part

The Maximum Special Tax on an Assessor's Parcel of Developed Property or an Assessor's Parcel of Undeveloped Property for which a building permit has been issued may be partially prepaid, provided an Assessor's Parcel of Developed Property may only be partially prepaid prior to or concurrent with the close of escrow of a sale to the initial homebuyer. The amount of the prepayment shall be calculated as in Section I.1; except that a partial prepayment shall be calculated according to the following formula:

$$PP = (P_E \times F) + G$$

These terms have the following meaning:

PP = the partial prepayment amount

P_E = the prepayment amount calculated according to Section I.1.a. and the call premium, if any, as determined by Section I.1.b.

F = the percent by which the owner of the Assessor Parcel(s) is partially prepaying the Maximum Special Tax.

G = the administrative fee determined in Section I.1.b.

The owner of an Assessor's Parcel who desires to partially prepay the Maximum Special Tax shall notify the Assistant Superintendent of Business Services of (i) such owner's intent to partially prepay the Maximum Special Tax, and (ii) the percentage by which the Maximum Special Tax shall be prepaid, and within five (5) days of receipt of such notice, the Assistant Superintendent of Business Services shall notify such owner of the amount of the non-refundable deposit determined to cover the cost to be incurred by CFD No. 2003-1 in calculating the proper amount of a partial prepayment. Within fifteen (15) days of receipt of such non-refundable deposit, the Assistant Superintendent of Business Services shall notify such owner of the partial prepayment amount of such Assessor's Parcel.

With respect to any Assessor's Parcel that is partially prepaid, the Assistant Superintendent of Business Services shall (i) distribute the funds remitted to it according to the Indenture, and (ii) indicate in the records of CFD No. 2003-1 that there has been a partial prepayment of the Maximum Special Tax and that a portion of the Maximum Special Tax equal to the outstanding percentage (1.00 - F) of the remaining Maximum Special Tax shall continue to be authorized to be levied on such Assessor's Parcel pursuant to Section D.

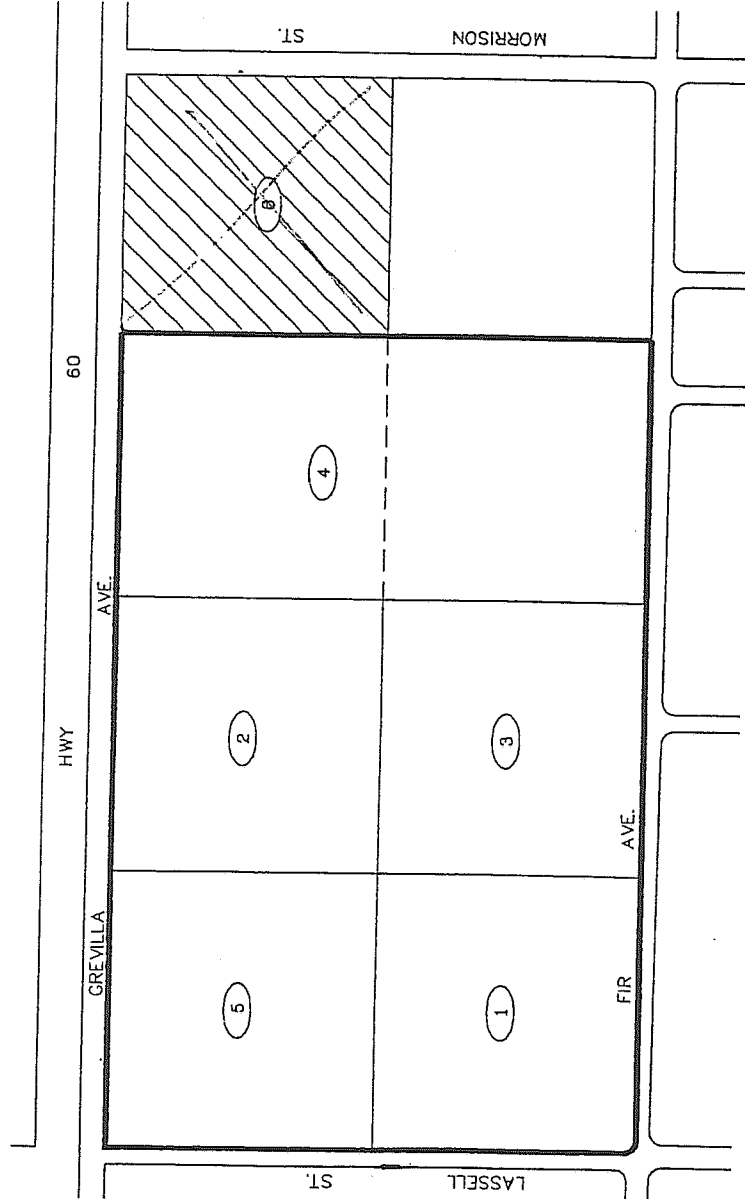
J. TERM OF THE SPECIAL TAX

The Special Tax shall be levied annually on all Assessor's Parcels of Taxable Property until the Fiscal Year 2039-40.

Exhibit B

CFD Boundary Map

PROPOSED BOUNDARY MAP OF
 COMMUNITY FACILITIES DISTRICT NO. 2003-1
 OF THE
 MORENO VALLEY UNIFIED SCHOOL DISTRICT
 COUNTY OF RIVERSIDE
 STATE OF CALIFORNIA



LOT DESIGNATION

LOT	TRACT	ASSESSOR'S PARCEL NO.
1	29504	477-150-002
2	28860	477-150-003
3	28860	477-150-012
4	28860	477-150-013
5	28504	477-150-020
6	30924	477-150-014

FILED IN THE OFFICE OF THE CLERK OF THE BOARD OF EDUCATION OF THE MORENO VALLEY UNIFIED SCHOOL DISTRICT THIS 28th DAY OF August 2003.

Tom B. Holcun
 JESUS M. HOLCUN
 CLERK OF THE BOARD OF EDUCATION
 MORENO VALLEY UNIFIED SCHOOL DISTRICT
 STATE OF CALIFORNIA

I HEREBY CERTIFY THAT THE WITHIN MAP SHOWING THE PROPOSED BOUNDARIES OF COMMUNITY FACILITIES DISTRICT NO. 2003-1, RIVERSIDE COUNTY, STATE OF CALIFORNIA, WAS APPROVED BY THE BOARD OF EDUCATION OF THE MORENO VALLEY UNIFIED SCHOOL DISTRICT AT A REGULAR MEETING HELD ON THE 28th DAY OF August 2003, BY ITS RESOLUTION NO. 2003-44-28.

Tom B. Holcun
 JESUS M. HOLCUN
 CLERK OF THE BOARD OF EDUCATION
 MORENO VALLEY UNIFIED SCHOOL DISTRICT
 STATE OF CALIFORNIA

FILED THIS 28th DAY OF AUGUST 2003, AT THE HOUR OF 2 O'CLOCK
 A. M. IN BOOK 54 OF MAPS OF ASSASSIN AND COMMUNITY FACILITIES
 DISTRICTS AT PAGES 65 AND AS INSTRUMENT NO. 2003-44-28 IN THE
 OFFICE OF THE COUNTY RECORDER OF RIVERSIDE COUNTY, STATE OF CALIFORNIA.

GARY L. CRISO
 COUNTY RECORDER OF RIVERSIDE COUNTY

[Signature]
 DEPUTY

NOTE: FOR PARTICULARS OF LINES AND DIMENSIONS OF ASSESSOR'S PARCELS, REFERENCE IS MADE TO THE RIVERSIDE COUNTY ASSESSOR PARCEL MAPS.

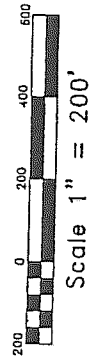
LEGEND

CFD BOUNDARY

LOT DESIGNATION

PROPOSED AREA OF ANNEXATION

Special District Financing
 & Administration
 333 South Juniper Street, Suite 208
 Escondido, California 92025
 Tel: (760) 233-5630 Fax: (760) 333-2631

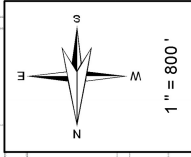


(03-010 AUGUST 2003)

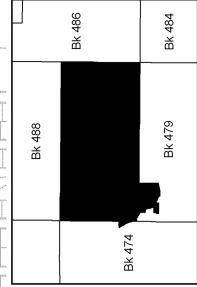
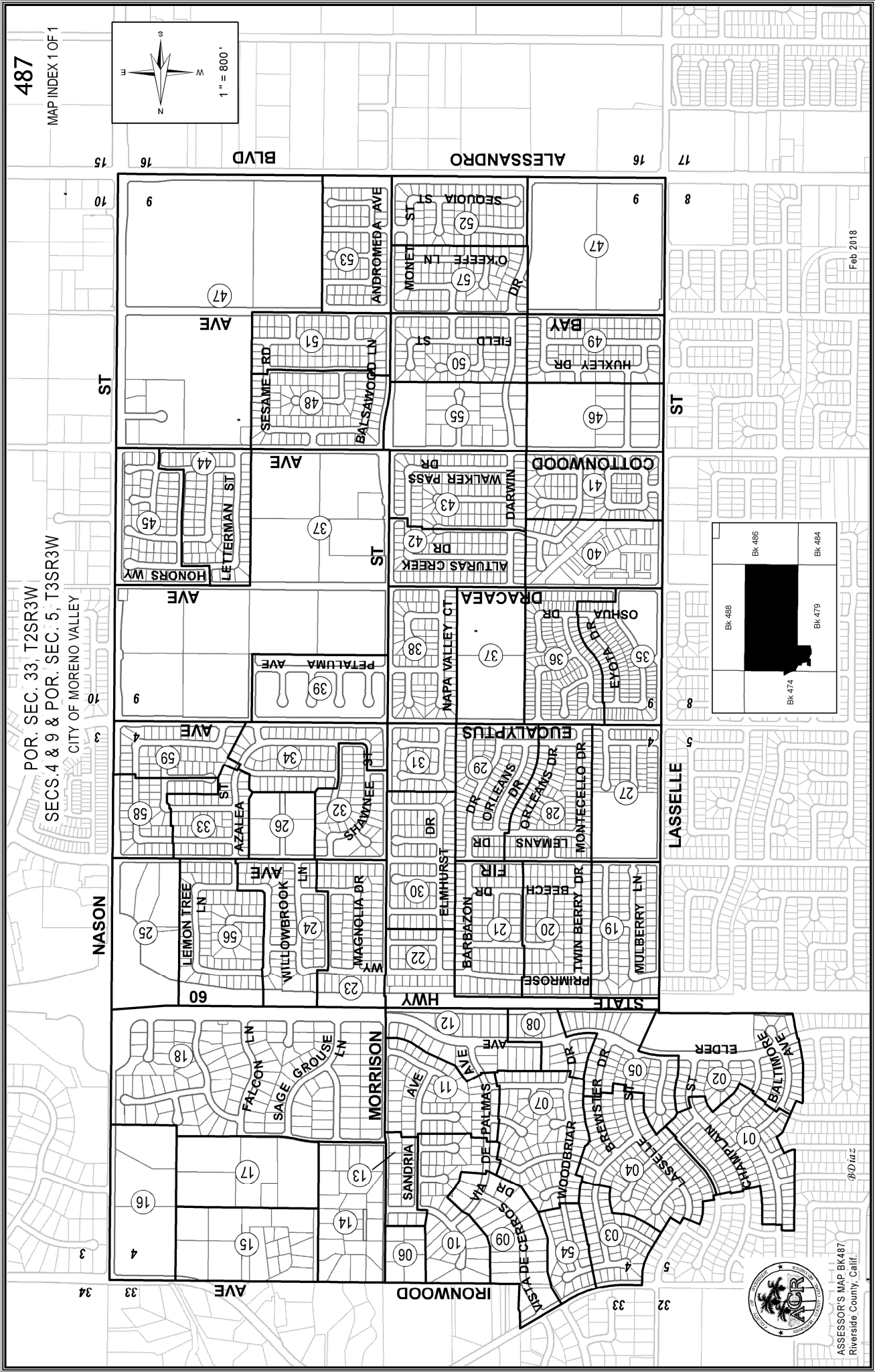
Recorded August 28, 2003 Bl. 54, Pg 65 Doc No. 2003-664529

Exhibit C

Assessor's Parcel Maps



POR. SEC. 33, T2SR3W
SECS. 4 & 9 & POR. SEC. 5, T3SR3W
CITY OF MORENO VALLEY



Feb. 2018



08/01/12

487-19
477-73

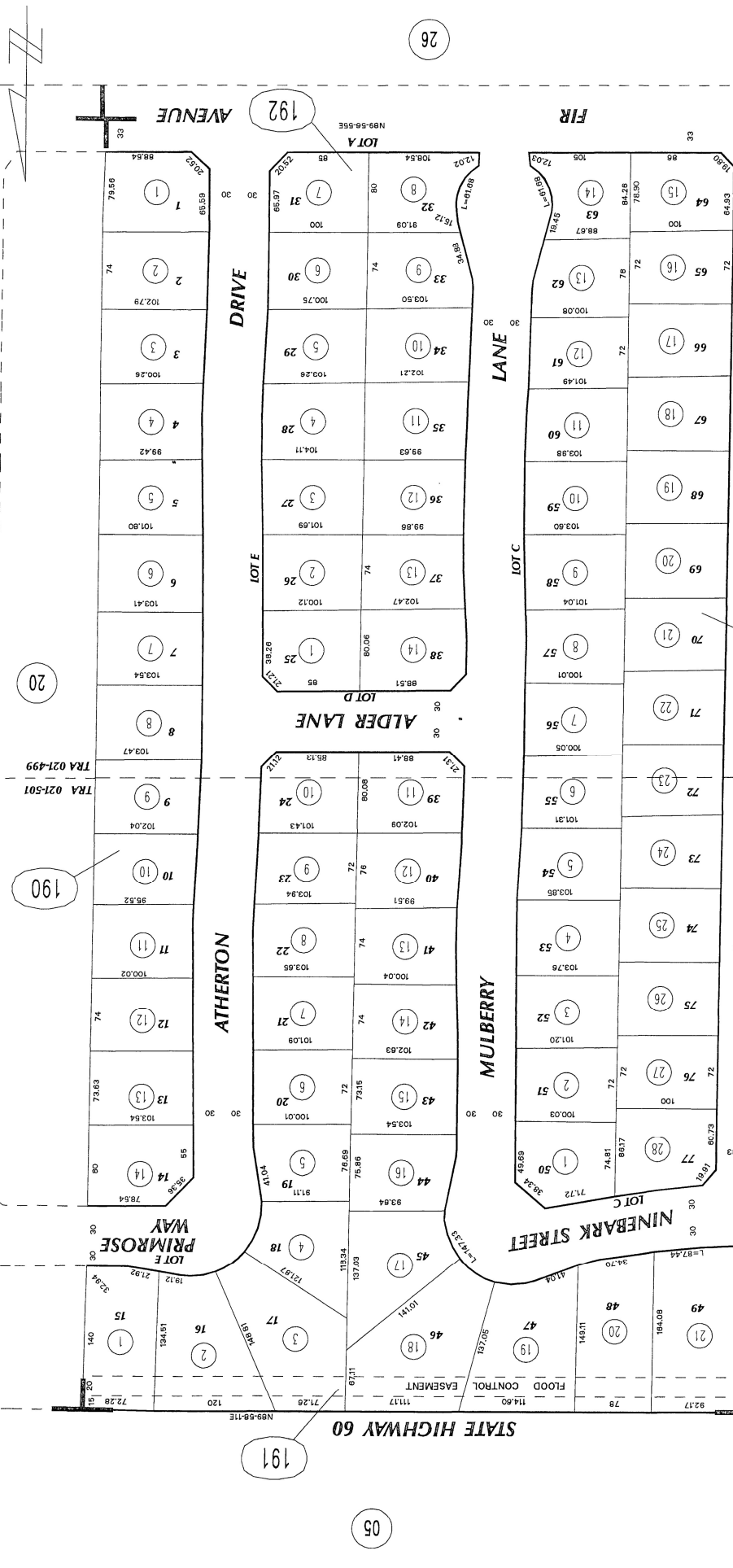
T.R.A. 021-499
021-501

POR. SEC. 4 T.3S. R.3W
CITY OF MORENO VALLEY

THIS MAP WAS PREPARED FOR ASSESSMENT PURPOSES ONLY. NO LIABILITY IS ASSUMED FOR THE ACCURACY OF THE DATA SHOWN. ASSESSOR'S PARCEL MAY NOT COMPLY WITH LOCAL LOT-SPLIT OR BUILDING SITE ORDINANCES.

MAR 01 2007

1" = 100'
ANGLE = 90



ASSESSOR'S MAP BK487 PG-19
Riverside County, Calif.

MB 332/67-71 TRACT MAP NO. 29504

Sep 2006

copy

THIS MAP WAS PREPARED FOR ASSESSMENT PURPOSES ONLY. NO LIABILITY IS ASSUMED FOR THE ACCURACY OF THE DATA SHOWN. ASSESSOR'S PARCEL MAY NOT COMPLY WITH LOCAL LOT-SPLIT OR BUILDING SITE ORDINANCES.

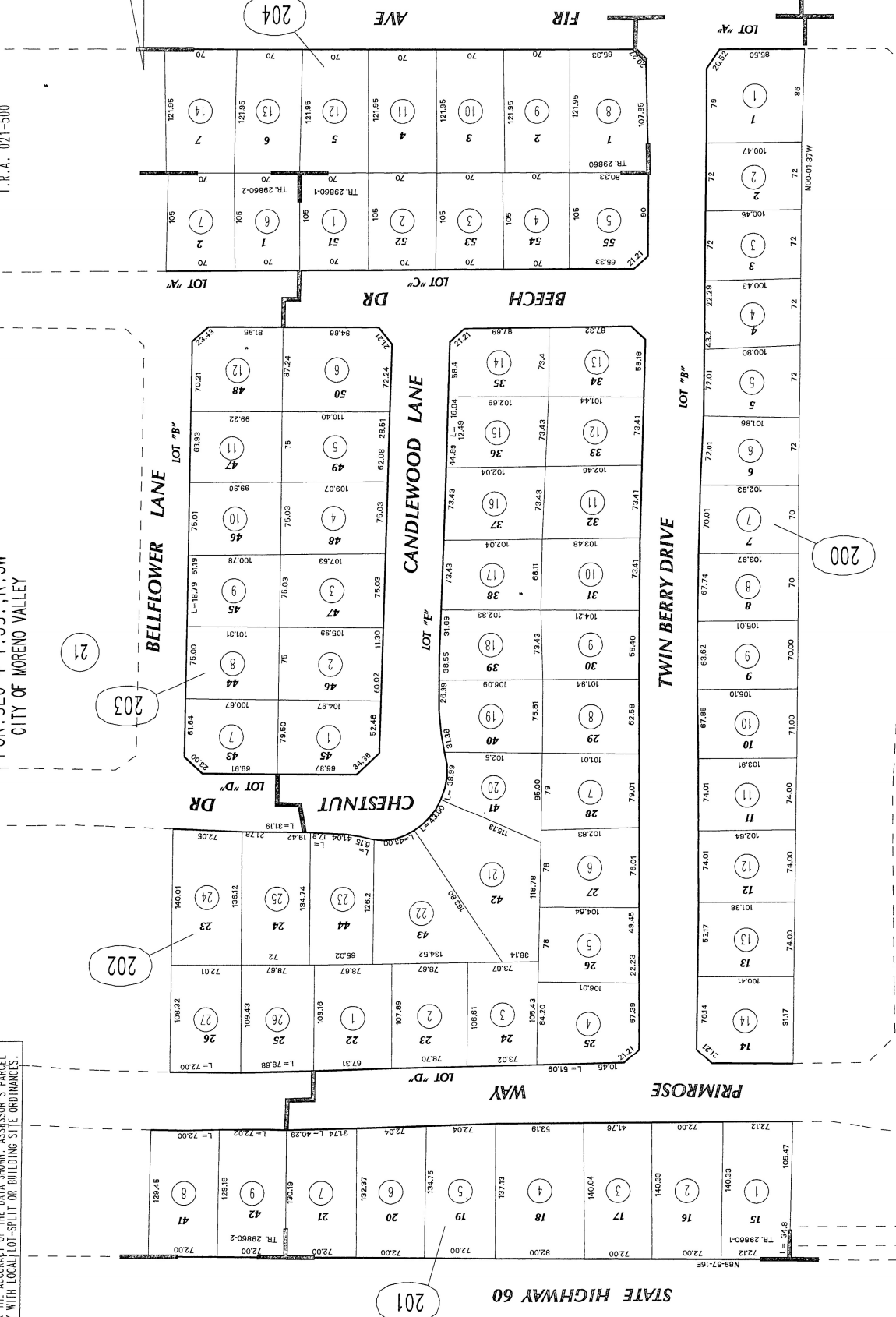
MAR 01 2007

POR SEC 4 T. 3S., R. 3W
CITY OF MORENO VALLEY

487-20
477-76

T. R. A. 021-500

1" = 100'
ANGLE = 90



MB 340/86-89 TRACT MAP NO. 29860-1
MB 342/42-46 TRACT MAP NO. 29860-2
MB 342/47-51 TRACT MAP NO. 29860-3

ASSESSOR'S MAP BK 487 PG. 20
Riverside County, Calif.

Sep 2006

08

09

20

21

22

23

24

25

26

27

28

29

30

31

32

33

34

35

36

37

38

39

40

41

42

43

44

45

46

47

48

49

50

51

52

53

54

55

56

57

58

59

60

61

62

63

64

65

66

67

68

69

70

71

72

73

74

75

76

77

78

79

80

81

82

83

84

85

86

87

88

89

90

91

92

93

94

95

96

97

98

99

100

101

102

103

104

105

106

107

108

109

110

111

112

113

114

115

116

117

118

119

120

121

122

123

124

125

126

127

128

129

130

131

132

133

134

135

136

137

138

139

140

141

142

143

144

145

146

147

148

149

150

151

152

153

154

155

156

157

158

159

160

161

162

163

164

165

166

167

168

169

170

171

172

173

174

175

176

177

178

179

180

181

182

183

184

185

186

187

188

189

190

191

192

193

194

195

196

197

198

199

200

201

202

203

204

205

206

207

208

209

210

211

212

213

214

215

216

217

218

219

220

221

222

223

224

225

226

227

228

229

230

231

232

233

234

235

236

237

238

239

240

241

242

243

244

245

246

247

248

249

250

251

252

253

254

255

256

257

258

259

260

261

262

263

264

265

266

267

268

269

270

271

272

273

274

275

276

277

278

279

280

281

282

283

284

285

286

287

288

289

290

291

292

293

294

295

296

487-21
471-77

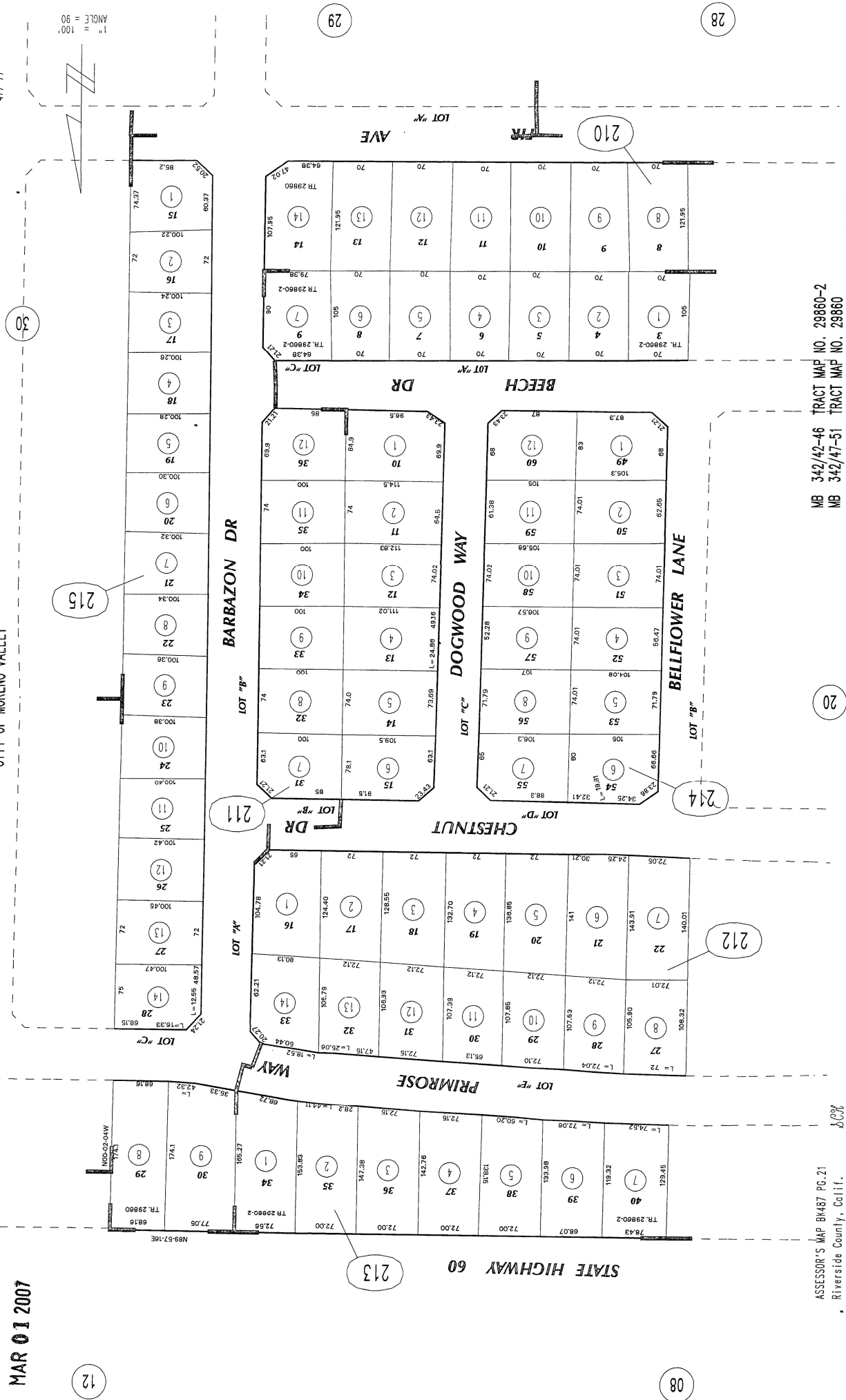
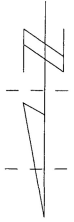
T.R.A. 021-500

POR. SEC 4 T.3S., R.3W
CITY OF MORENO VALLEY

THIS MAP WAS PREPARED FOR ASSESSMENT PURPOSES ONLY. NO LIABILITY IS ASSUMED FOR THE ACCURACY OF THE DATA SHOWN. ASSESSOR'S PARCEL MAY NOT COMPLY WITH LOCAL LOT-SPLIT OR BUILDING SITE ORDINANCES.

MAR 01 2007

1" ANGLE = 90'
100'



29

28

30

215

22

211

214

212

213

TRACT MAP NO. 29860-2
TRACT MAP NO. 29860

ASSESSOR'S MAP BK487 PG. 21
Riverside County, Calif.

Sep 2006

12

08

Exhibit D

Special Tax Revenue Bonds Series 2024A Debt Service Schedule

**Moreno Valley Unified School District
Community Facilities District No. 2003-1
Special Tax Revenue Bonds Series 2024A
Debt Service Schedule**

Period	Special Tax Revenue Bonds Series 2024A			
	Principal	Interest	Debt Service	Total Semi-Annual Debt Service
3/1/2024	\$0.00	\$0.00	\$0.00	\$542,319.52
9/1/2024	\$539,378.04	\$2,941.48	\$542,319.52	
3/1/2025	\$50,901.57	\$554.04	\$51,455.61	\$550,641.11
9/1/2025	\$491,155.50	\$8,030.00	\$499,185.50	
3/1/2026	\$46,436.52	\$1,014.00	\$47,450.52	\$563,051.80
9/1/2026	\$501,871.62	\$13,729.66	\$515,601.28	
3/1/2027	\$41,971.47	\$1,380.86	\$43,352.33	\$572,880.60
9/1/2027	\$509,908.71	\$19,619.56	\$529,528.27	
3/1/2028	\$37,506.42	\$1,653.54	\$39,159.96	\$585,669.99
9/1/2028	\$520,624.83	\$25,885.20	\$546,510.03	
3/1/2029	\$33,041.37	\$1,830.39	\$34,871.76	\$596,774.84
9/1/2029	\$529,554.93	\$32,348.15	\$561,903.08	
3/1/2030	\$27,683.31	\$1,849.77	\$29,533.08	\$610,935.89
9/1/2030	\$542,057.07	\$39,345.74	\$581,402.81	
3/1/2031	\$20,539.23	\$1,609.77	\$22,149.00	\$618,560.20
9/1/2031	\$550,094.16	\$46,317.04	\$596,411.20	
3/1/2032	\$16,967.19	\$1,527.98	\$18,495.17	\$635,063.57
9/1/2032	\$562,596.30	\$53,972.10	\$616,568.40	
3/1/2033	\$11,609.13	\$1,182.48	\$12,791.61	\$648,898.65
9/1/2033	\$574,205.43	\$61,901.61	\$636,107.04	
3/1/2034	\$6,251.07	\$711.27	\$6,962.34	\$661,962.34
9/1/2034	\$584,921.55	\$70,078.45	\$655,000.00	
3/1/2035	\$171,866.40	\$157,557.12	\$329,423.52	\$667,984.47
9/1/2035	\$171,489.50	\$167,071.45	\$338,560.95	
3/1/2036	\$165,082.20	\$170,605.38	\$335,687.58	\$681,444.78
9/1/2036	\$165,082.20	\$180,675.00	\$345,757.20	
3/1/2037	\$158,674.90	\$183,635.99	\$342,310.89	\$694,889.97
9/1/2037	\$158,674.90	\$193,904.18	\$352,579.08	
3/1/2038	\$152,644.50	\$196,708.50	\$349,353.00	\$708,298.92
9/1/2038	\$152,267.60	\$206,678.32	\$358,945.92	
3/1/2039	\$146,614.10	\$209,375.36	\$355,989.46	\$722,656.97
9/1/2039	\$146,614.10	\$220,053.41	\$366,667.51	
3/1/2040	\$139,453.00	\$219,768.90	\$359,221.90	\$728,221.90
9/1/2040	\$139,076.10	\$229,923.90	\$369,000.00	
Total	\$8,066,814.92	\$2,723,440.60	\$10,790,255.52	\$10,790,255.52

Exhibit E

Delinquent Annual Special Tax Report



Fixed Charge Special Assessment Delinquency Report

Year End Report for Fiscal Year 2023/2024

Moreno Valley Unified School District Community Facilities District No. 2003-1



Summary

Year End

Total Taxes Due June 30, 2024	\$683,881.20
Amount Paid	\$683,881.20
Amount Remaining to be Collected	\$0.00
Number of Parcels Delinquent	0
Delinquency Rate	0.00%

Foreclosure

CFD Subject to Foreclosure Covenant:	Yes
Foreclosure Determination Date:	October 30th

Foreclosure Qualification

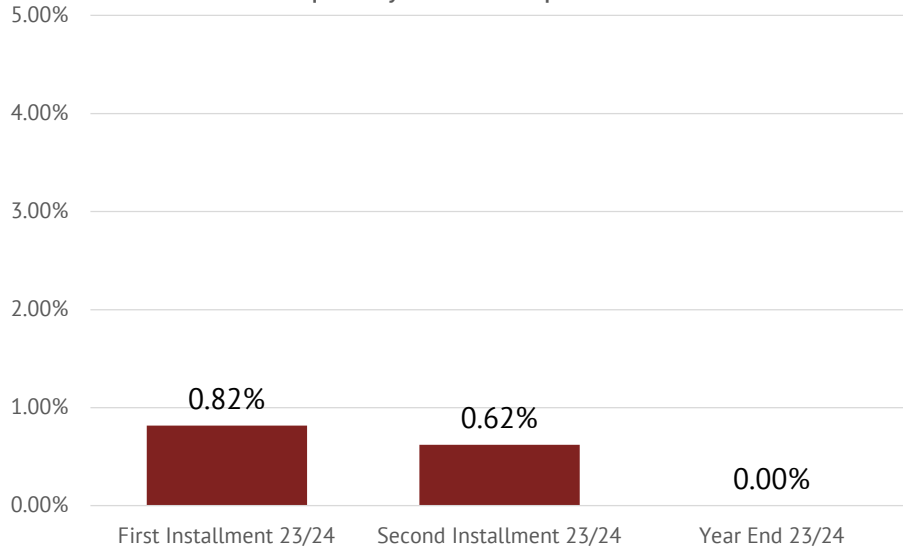
Individual Parcel Delinquency	\$5,000
Individual Owner Multiple Parcels Delinquency	N/A
Individual Parcels Semi-Annual Installments	N/A
Aggregate Delinquency Rate	5.00%

Parcels Qualifying for Foreclosure

Parcels Exceeding Individual Foreclosure Threshold	0
Parcels Exceeding CFD Aggregate	0

Pursuant to the Foreclosure Covenant in the Fiscal Agent Agreement there is no requirement to initiate Foreclosure Proceedings as long as the aggregate delinquencies do not create a draw from the Reserve Fund that would bring the total fund balance below the Reserve Requirement.

Year End
Delinquency Rate Comparison





Fixed Charge Special Assessment Delinquency Report



Year End Report for Fiscal Year 2023/2024

Moreno Valley Unified School District Community Facilities District No. 2003-1

Historical Delinquency Summary

Fiscal Year	Subject Fiscal Year				June 30, 2024		
	Aggregate Special Tax	Parcels Delinquent	Amount Collected	Amount Delinquent	Delinquency Rate	Remaining Amount Delinquent	Remaining Delinquency Rate
2019/2020	\$631,799.78	1	\$628,887.43	\$2,912.35	0.46%	\$0.00	0.00%
2020/2021	644,436.04	1	641,617.36	2,818.68	0.44%	0.00	0.00%
2021/2022	657,325.34	1	654,450.30	2,875.04	0.44%	0.00	0.00%
2022/2023	670,471.42	2	666,113.38	4,358.04	0.65%	1,425.48	0.21%
2023/2024	683,881.20	0	683,881.20	0.00	0.00%	0.00	0.00%

Historical Delinquency Rate

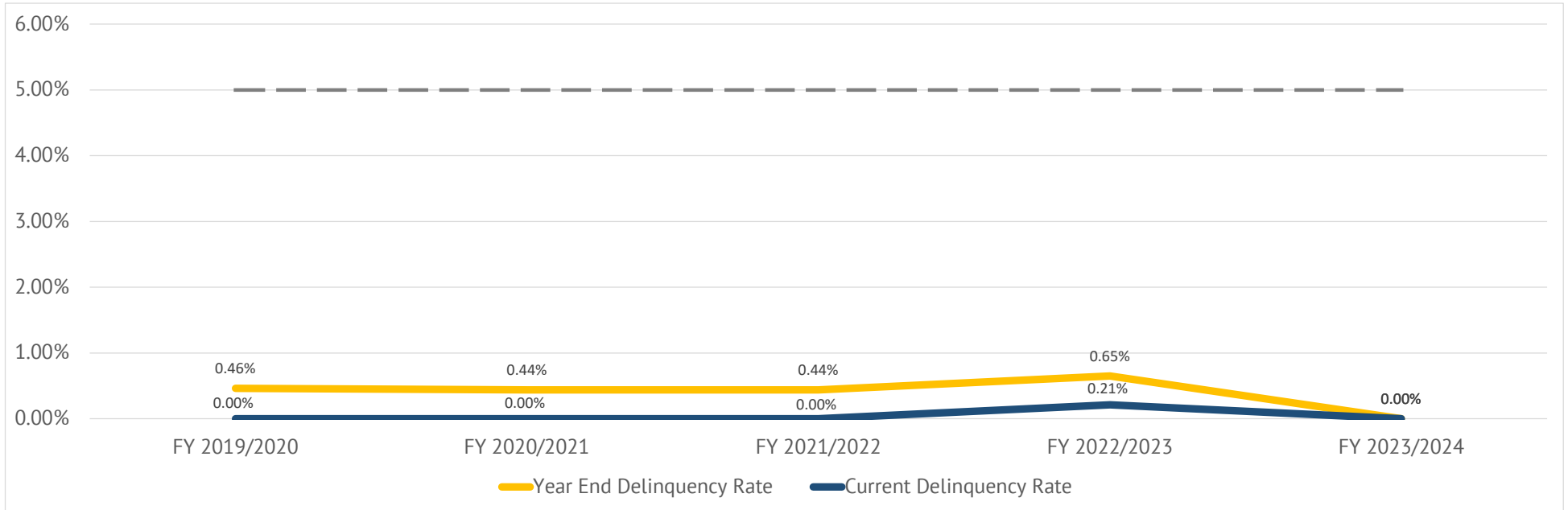


Exhibit F

Summary of Transactions for Fiscal Agent Accounts



Fund: CFD No. 2003-1 (Series 2013 Special Tax Refunding)

Subfund: 206233000 - Special Tax Fund alla ccts closed March 2024

Date	Interest	Deposits	Transfers In	Transfers Out	Expenditures	Balance	Payee	Reference	Description
07-01-2023	\$9,323.18	\$6,144,509.97	\$0.00	(\$5,604,846.09)	\$0.00	\$548,987.06			BEGINNING BALANCE
07-03-2023	\$2,043.47					\$551,030.53		Interest	Interest Earnings
08-01-2023	\$2,148.09					\$553,178.62		Interest	Interest Earnings
08-14-2023		\$1,867.85				\$555,046.47		Deposit	Special Tax Deposit
09-01-2023	\$2,248.58					\$557,295.05		Interest	Interest Earnings
09-01-2023				(\$109,158.36)		\$448,136.69		Transfer Out	TRANSFER TO 206233002 Interest Fund
09-01-2023				(\$305,000.00)		\$143,136.69		Transfer Out	TRANSFER TO 206233003 Principal Fund
09-05-2023				(\$143,136.69)		\$0.00		Transfer Out	TRANSFER TO 206233007 Surplus Fund
10-02-2023	\$73.70					\$73.70		Interest	Interest Earnings
11-01-2023	\$0.29					\$73.99		Interest	Interest Earnings
12-01-2023	\$0.29					\$74.28		Interest	Interest Earnings
01-02-2024	\$0.30					\$74.58		Interest	Interest Earnings
02-01-2024	\$0.30					\$74.88		Interest	Interest Earnings
02-02-2024		\$353,794.05				\$353,868.93		Deposit	Special Tax Deposit
02-29-2024				(\$74.58)		\$353,794.35		Transfer Out	Transfer To Per The Terms Of The Indenture
02-29-2024				(\$353,794.35)		\$0.00		Transfer Out	Transfer To 217281000 Special Tax Fund
03-01-2024	\$1,247.78					\$1,247.78		Interest	Interest Earnings
03-04-2024				(\$1,247.78)		\$0.00		Transfer Out	Transfer To 217281000 Special Tax Fund
	\$7,762.80	\$355,661.90	\$0.00	(\$912,411.76)	\$0.00	(\$548,987.06)			DATE RANGE BALANCE
Subfund Total	\$17,085.98	\$6,500,171.87	\$0.00	(\$6,517,257.85)	\$0.00	\$0.00	Total for 206233000 - Special Tax Fund alla ccts closed March 2024		

Subfund: 206233001 - Administration Expense Fund

Date	Interest	Deposits	Transfers In	Transfers Out	Expenditures	Balance	Payee	Reference	Description
07-01-2023	\$3,137.99	\$11,616.44	\$294,952.36	\$0.00	(\$277,876.53)	\$31,830.26			BEGINNING BALANCE
07-03-2023	\$118.47					\$31,948.73		Interest	Interest Earnings
07-26-2023					(\$2,267.50)	\$29,681.23	KeyAnalytics	Professional Services	Admin Exp April - June 2023 Per Payment Request 70
08-01-2023	\$122.78					\$29,804.01		Interest	Interest Earnings
08-03-2023					(\$25,000.00)	\$4,804.01	M.V.U.S.D.	Professional Services	Per Payment Request 71
09-01-2023	\$26.00					\$4,830.01		Interest	Interest Earnings
10-02-2023	\$19.00					\$4,849.01		Interest	Interest Earnings
10-27-2023					(\$25,000.00)	(\$20,150.99)	M.V.U.S.D.	Professional Services	Request 72 From Cfd No 2003-1 Admin Exp
10-27-2023			\$25,000.00			\$4,849.01		Transfer In	Transfer From 206233007 Surplus Fund
11-01-2023	\$19.79					\$4,868.80		Interest	Interest Earnings
11-30-2023					(\$3,000.00)	\$1,868.80	U.S. Bank	Professional Services	Trustee Fee Req 73 Dated 1182023
12-01-2023	\$18.90					\$1,887.70		Interest	Interest Earnings
01-02-2024	\$7.73					\$1,895.43		Interest	Interest Earnings
02-01-2024	\$7.73					\$1,903.16		Interest	Interest Earnings
02-29-2024				(\$7.73)		\$1,895.43		Transfer Out	Transfer To 217281004 Administrative Expense Fund
02-29-2024				(\$1,895.43)		\$0.00		Transfer Out	Transfer To Per The Terms Of The Indenture
03-01-2024	\$6.96					\$6.96		Interest	Interest Earnings



Subfund: 206233001 - Administration Expense Fund

Date	Interest	Deposits	Transfers In	Transfers Out	Expenditures	Balance	Payee	Reference	Description
03-04-2024			\$780.17			\$787.13		Transfer In	Transfer From 206233001 Administration Expense Fund
03-04-2024				(\$780.17)		\$6.96		Transfer Out	Transfer To 206233001 Administration Expense Fund
03-04-2024				(\$6.96)		\$0.00		Transfer Out	Transfer To 217281004 Administrative Expense Fund
	\$347.36	\$0.00	\$25,780.17	(\$2,690.29)	(\$55,267.50)	(\$31,830.26)			DATE RANGE BALANCE
Subfund Total	\$3,485.35	\$11,616.44	\$320,732.53	(\$2,690.29)	(\$333,144.03)	\$0.00	Total for 206233001 - Administration Expense Fund		

Subfund: 206233002 - Interest Fund

Date	Interest	Deposits	Transfers In	Transfers Out	Expenditures	Balance	Payee	Reference	Description
07-01-2023	\$267.60	\$0.00	\$2,696,503.62	\$0.00	(\$2,686,449.00)	\$10,322.22			BEGINNING BALANCE
07-03-2023	\$38.42					\$10,360.64		Interest	Interest Earnings
08-01-2023	\$40.39					\$10,401.03		Interest	Interest Earnings
09-01-2023					(\$119,519.00)	(\$109,117.97)	Certificate Investors	Debt Service Interest	Debt Service Interest
09-01-2023			\$109,158.36			\$40.39		Transfer In	TRANSFER FROM 206233000 Special Tax Fund
09-01-2023	\$42.20					\$82.59		Interest	Interest Earnings
10-02-2023	\$0.30					\$82.89		Interest	Interest Earnings
11-01-2023	\$0.34					\$83.23		Interest	Interest Earnings
12-01-2023	\$0.33					\$83.56		Interest	Interest Earnings
01-02-2024	\$0.34					\$83.90		Interest	Interest Earnings
02-01-2024	\$0.34					\$84.24		Interest	Interest Earnings
02-29-2024				(\$83.90)		\$0.34		Transfer Out	Transfer To Per The Terms Of The Indenture
02-29-2024				(\$0.34)		\$0.00		Transfer Out	Transfer To 217281000 Special Tax Fund
03-01-2024					(\$112,992.00)	(\$112,992.00)	Certificate Investors	Debt Service Interest	Debt Service Interest
03-01-2024			\$112,992.00			\$0.00		Transfer In	Transfer From 217474000 Escrow Account
03-01-2024	\$0.31					\$0.31		Interest	Interest Earnings
03-04-2024				(\$0.31)		\$0.00		Transfer Out	Transfer To 217281000 Special Tax Fund
	\$122.97	\$0.00	\$222,150.36	(\$84.55)	(\$232,511.00)	(\$10,322.22)			DATE RANGE BALANCE
Subfund Total	\$390.57	\$0.00	\$2,918,653.98	(\$84.55)	(\$2,918,960.00)	\$0.00	Total for 206233002 - Interest Fund		

Subfund: 206233003 - Principal Fund

Date	Interest	Deposits	Transfers In	Transfers Out	Expenditures	Balance	Payee	Reference	Description
07-01-2023	\$1,759.79	\$0.00	\$1,838,240.21	\$0.00	(\$1,840,000.00)	\$0.00			BEGINNING BALANCE
09-01-2023					(\$305,000.00)	(\$305,000.00)	Certificate Investors	Debt Service Principal	Debt Service Principal
09-01-2023			\$305,000.00			\$0.00		Transfer In	TRANSFER FROM 206233000 Special Tax Fund
03-01-2024					(\$5,332,800.00)	(\$5,332,800.00)	Certificate Investors	Debt Service Principal	Debt Service Principal
03-01-2024			\$5,332,800.00			\$0.00		Transfer In	Transfer From 217474000 Escrow Account
	\$0.00	\$0.00	\$5,637,800.00	\$0.00	(\$5,637,800.00)	\$0.00			DATE RANGE BALANCE
Subfund Total	\$1,759.79	\$0.00	\$7,476,040.21	\$0.00	(\$7,477,800.00)	\$0.00	Total for 206233003 - Principal Fund		

Subfund: 206233004 - Reserve Fund

Date	Interest	Deposits	Transfers In	Transfers Out	Expenditures	Balance	Payee	Reference	Description
07-01-2023	\$43,513.30	\$683,034.00	\$0.00	(\$34,111.85)	\$0.00	\$692,435.45			BEGINNING BALANCE
07-03-2023	\$2,577.23					\$695,012.68		Interest	Interest Earnings


Subfund: 206233004 - Reserve Fund

Date	Interest	Deposits	Transfers In	Transfers Out	Expenditures	Balance	Payee	Reference	Description
08-01-2023	\$2,709.37					\$697,722.05		Interest	Interest Earnings
09-01-2023	\$2,830.57					\$700,552.62		Interest	Interest Earnings
10-02-2023	\$2,755.63					\$703,308.25		Interest	Interest Earnings
11-01-2023	\$2,869.88					\$706,178.13		Interest	Interest Earnings
12-01-2023	\$2,799.12					\$708,977.25		Interest	Interest Earnings
01-02-2024	\$2,901.70					\$711,878.95		Interest	Interest Earnings
02-01-2024	\$2,901.58					\$714,780.53		Interest	Interest Earnings
02-29-2024				(\$711,878.95)		\$2,901.58		Transfer Out	Transfer To Per The Terms Of The Indenture
02-29-2024				(\$2,901.58)		\$0.00		Transfer Out	Transfer To 229645003 Reserve Fund
03-01-2024	\$2,614.05					\$2,614.05		Interest	Interest Earnings
03-04-2024				(\$2,614.05)		\$0.00		Transfer Out	Transfer To 229645003 Reserve Fund
	\$24,959.13	\$0.00	\$0.00	(\$717,394.58)	\$0.00	(\$692,435.45)			DATE RANGE BALANCE
Subfund Total	\$68,472.43	\$683,034.00	\$0.00	(\$751,506.43)	\$0.00	\$0.00	Total for 206233004 - Reserve Fund		

Subfund: 206233007 - Surplus Fund

Date	Interest	Deposits	Transfers In	Transfers Out	Expenditures	Balance	Payee	Reference	Description
07-01-2023	\$36,249.57	\$411,981.14	\$811,320.12	\$0.00	(\$1,129,801.80)	\$129,749.03			BEGINNING BALANCE
07-03-2023	\$482.92					\$130,231.95		Interest	Interest Earnings
08-01-2023	\$507.68					\$130,739.63		Interest	Interest Earnings
09-01-2023	\$530.39					\$131,270.02		Interest	Interest Earnings
09-05-2023			\$143,136.69			\$274,406.71		Transfer In	TRANSFER FROM 206233000 Special Tax Fund
10-02-2023	\$1,004.81					\$275,411.52		Interest	Interest Earnings
10-27-2023				(\$25,000.00)		\$250,411.52		Transfer Out	Transfer To 206233001 Admin Expense Fd
11-01-2023	\$1,107.33					\$251,518.85		Interest	Interest Earnings
12-01-2023	\$996.95					\$252,515.80		Interest	Interest Earnings
01-02-2024	\$1,033.50					\$253,549.30		Interest	Interest Earnings
02-01-2024	\$1,033.45					\$254,582.75		Interest	Interest Earnings
02-29-2024				(\$253,549.30)		\$1,033.45		Transfer Out	Transfer To Per The Terms Of The Indenture
02-29-2024				(\$1,033.45)		\$0.00		Transfer Out	Transfer To 217281005 Surplus Account
03-01-2024	\$931.04					\$931.04		Interest	Interest Earnings
03-04-2024				(\$931.04)		\$0.00		Transfer Out	Transfer To 217281005 Surplus Account
	\$7,628.07	\$0.00	\$143,136.69	(\$280,513.79)	\$0.00	(\$129,749.03)			DATE RANGE BALANCE
Subfund Total	\$43,877.64	\$411,981.14	\$954,456.81	(\$280,513.79)	(\$1,129,801.80)	\$0.00	Total for 206233007 - Surplus Fund		

Subfund: 206233008 - Acquisition Fund (Closed)

Date	Interest	Deposits	Transfers In	Transfers Out	Expenditures	Balance	Payee	Reference	Description
07-01-2023	\$368.39	\$2,248,027.58	\$0.00	(\$2,248,391.15)	(\$4.82)	\$0.00			BEGINNING BALANCE
	\$0.00	\$0.00	\$0.00	\$0.00	\$0.00	\$0.00			DATE RANGE BALANCE
Subfund Total	\$368.39	\$2,248,027.58	\$0.00	(\$2,248,391.15)	(\$4.82)	\$0.00	Total for 206233008 - Acquisition Fund (Closed)		


Subfund: 206233009 - Cost of Issuance Fund (Closed)

Date	Interest	Deposits	Transfers In	Transfers Out	Expenditures	Balance	Payee	Reference	Description
07-01-2023	\$2.18	\$276,925.38	\$0.00	(\$2,058.37)	(\$274,869.19)	\$0.00			BEGINNING BALANCE
	\$0.00	\$0.00	\$0.00	\$0.00	\$0.00	\$0.00			DATE RANGE BALANCE
Subfund Total	\$2.18	\$276,925.38	\$0.00	(\$2,058.37)	(\$274,869.19)	\$0.00	Total for 206233009 - Cost of Issuance Fund (Closed)		
Fund Total	\$135,442.33	\$10,131,756.41	\$11,669,883.53	(\$9,802,502.43)	(\$12,134,579.84)	\$0.00	Total for CFD No. 2003-1 (Series 2013 Special Tax Refunding)		

Fund: CFD No. 2003-1 (Series 2024 Special Tax Refunding)
Subfund: 217281000 - Special Tax Fund

Date	Interest	Deposits	Transfers In	Transfers Out	Expenditures	Balance	Payee	Reference	Description
07-01-2023	\$0.00	\$0.00	\$0.00	\$0.00	\$0.00	\$0.00			BEGINNING BALANCE
02-29-2024			\$353,794.35			\$353,794.35		Transfer In	Transfer From 206233000 Special Tax Fund
02-29-2024			\$74.58			\$353,868.93		Transfer In	Bond Proceeds
02-29-2024			\$0.34			\$353,869.27		Transfer In	Transfer From 206233002 Interest Fund
03-01-2024	\$46.29					\$353,915.56		Interest	Interest Earnings
03-04-2024			\$1,247.78			\$355,163.34		Transfer In	Transfer From 206233000 Special Tax Fund
03-04-2024			\$0.31			\$355,163.65		Transfer In	Transfer From 206233002 Interest Fund
04-01-2024	\$1,434.66					\$356,598.31		Interest	Interest Earnings
04-08-2024				(\$37,148.86)		\$319,449.45		Transfer Out	Transfer To 217281004 Administration Expense Fund
05-01-2024	\$1,280.55					\$320,730.00		Interest	Interest Earnings
06-03-2024		\$327,144.18				\$647,874.18		Deposit	Special Tax Deposit
06-03-2024	\$1,294.08					\$649,168.26		Interest	Interest Earnings
	\$4,055.58	\$327,144.18	\$355,117.36	(\$37,148.86)	\$0.00	\$649,168.26			DATE RANGE BALANCE
Subfund Total	\$4,055.58	\$327,144.18	\$355,117.36	(\$37,148.86)	\$0.00	\$649,168.26	Total for 217281000 - Special Tax Fund		

Subfund: 217281004 - Administrative Expense Fund

Date	Interest	Deposits	Transfers In	Transfers Out	Expenditures	Balance	Payee	Reference	Description
07-01-2023	\$0.00	\$0.00	\$0.00	\$0.00	\$0.00	\$0.00			BEGINNING BALANCE
02-29-2024			\$1,895.43			\$1,895.43		Transfer In	Bond Proceeds
02-29-2024			\$7.73			\$1,903.16		Transfer In	Transfer From 206233001 Administration Expense Fund
03-01-2024	\$0.25					\$1,903.41		Interest	Interest Earnings
03-04-2024			\$6.96			\$1,910.37		Transfer In	Transfer From 206233001 Administration Expense Fund
04-01-2024	\$7.72					\$1,918.09		Interest	Interest Earnings
04-08-2024			\$37,148.86			\$39,066.95		Transfer In	Transfer From 217281000 Special Tax Fund
04-11-2024					(\$2,267.50)	\$36,799.45	KeyAnalytics	Professional Services	Via Check OC 2023-997 ADMIN EXP JULY-SEPT 2023 INV 2023-997 PER REQ74
04-15-2024					(\$2,267.50)	\$34,531.95	KeyAnalytics	Professional Services	Via Check OC 2024-145 ADMIN EXP OCT - DEC 2023 INV 2024-145 PER REQ75
05-01-2024	\$108.01					\$34,639.96		Interest	Interest Earnings
06-03-2024	\$139.77					\$34,779.73		Interest	Interest Earnings
06-27-2024					(\$2,267.50)	\$32,512.23	KeyAnalytics	Professional Services	Via Check OC 2023-1009 ADMIN EXP CHARGES JAN MAR 2024 PER REQUEST 76
	\$255.75	\$0.00	\$39,058.98	\$0.00	(\$6,802.50)	\$32,512.23			DATE RANGE BALANCE
Subfund Total	\$255.75	\$0.00	\$39,058.98	\$0.00	(\$6,802.50)	\$32,512.23	Total for 217281004 - Administrative Expense Fund		


Subfund: 217281005 - Surplus Account

Date	Interest	Deposits	Transfers In	Transfers Out	Expenditures	Balance	Payee	Reference	Description
07-01-2023	\$0.00	\$0.00	\$0.00	\$0.00	\$0.00	\$0.00			BEGINNING BALANCE
02-29-2024			\$253,549.30			\$253,549.30		Transfer In	Bond Proceeds
02-29-2024			\$1,033.45			\$254,582.75		Transfer In	Transfer From 206233007 Surplus Fund
03-01-2024	\$33.30					\$254,616.05		Interest	Interest Earnings
03-04-2024			\$931.04			\$255,547.09		Transfer In	Transfer From 206233007 Surplus Fund
04-01-2024	\$1,032.25					\$256,579.34		Interest	Interest Earnings
05-01-2024	\$1,001.35					\$257,580.69		Interest	Interest Earnings
06-03-2024	\$1,039.29					\$258,619.98		Interest	Interest Earnings
	\$3,106.19	\$0.00	\$255,513.79	\$0.00	\$0.00	\$258,619.98			DATE RANGE BALANCE
Subfund Total	\$3,106.19	\$0.00	\$255,513.79	\$0.00	\$0.00	\$258,619.98	Total for 217281005 - Surplus Account		

Subfund: 217281006 - Acquisition and Construction Fund

Date	Interest	Deposits	Transfers In	Transfers Out	Expenditures	Balance	Payee	Reference	Description
07-01-2023	\$0.00	\$0.00	\$0.00	\$0.00	\$0.00	\$0.00			BEGINNING BALANCE
02-29-2024			\$2,532,955.08			\$2,532,955.08		Transfer In	Bond Proceeds
03-01-2024	\$331.35					\$2,533,286.43		Interest	Interest Earnings
04-01-2024	\$10,236.50					\$2,543,522.93		Interest	Interest Earnings
05-01-2024	\$9,926.56					\$2,553,449.49		Interest	Interest Earnings
06-03-2024	\$10,302.65					\$2,563,752.14		Interest	Interest Earnings
	\$30,797.06	\$0.00	\$2,532,955.08	\$0.00	\$0.00	\$2,563,752.14			DATE RANGE BALANCE
Subfund Total	\$30,797.06	\$0.00	\$2,532,955.08	\$0.00	\$0.00	\$2,563,752.14	Total for 217281006 - Acquisition and Construction Fund		

Subfund: 217281007 - Costs of Issuance Account

Date	Interest	Deposits	Transfers In	Transfers Out	Expenditures	Balance	Payee	Reference	Description
07-01-2023	\$0.00	\$0.00	\$0.00	\$0.00	\$0.00	\$0.00			BEGINNING BALANCE
02-29-2024					(\$3,700.00)	(\$3,700.00)	Squire Patton Boggs	Professional Services	Cost Of Issuance Via Wire
02-29-2024					(\$10,824.07)	(\$14,524.07)	KeyAnalytics	Professional Services	Cost Of Issuance Via Wire
02-29-2024					(\$17,388.34)	(\$31,912.41)	Fieldman Rolapp & Associates	Professional Services	Cost Of Issuance Via Wire
02-29-2024					(\$257.68)	(\$32,170.09)	Avia Communications	Professional Services	Cost Of Issuance Via Wire
02-29-2024					(\$17,528.01)	(\$49,698.10)	Stradling Yocca Carlson	Professional Services	Cost Of Issuance Via Wire
02-29-2024			\$669,954.45			\$620,256.35		Transfer In	Bond Proceeds
03-01-2024	\$81.14					\$620,337.49		Interest	Interest Earnings
03-01-2024				(\$11.18)		\$620,326.31		Transfer Out	Transfer To 217023007 Costs of Issuance Account
03-04-2024					(\$419.10)	\$619,907.21	Causey Demgen & Moore P.C.	Professional Services	Cost Of Issuance Via Wire
03-06-2024					(\$279.32)	\$619,627.89	U.S. Bank	Professional Services	Trustee Fee Via Memo Partial Payment Of Escrow Agent 2000 Invoice
03-06-2024					(\$837.99)	\$618,789.90	U.S. Bank	Professional Services	Trustee Fee Via Memo Partial Payment Of Us Bank Auth Invoice
03-06-2024					(\$349.16)	\$618,440.74	U.S. Bank	Professional Services	Trustee Fee Via Memo Partial Payment Of Us Banks Invoice For Cfd 20021
03-06-2024					(\$349.16)	\$618,091.58	U.S. Bank	Professional Services	Trustee Fee Via Memo Partial Payment Of Us Banks Invoice For Cfd 20031
03-06-2024					(\$349.16)	\$617,742.42	U.S. Bank	Professional Services	Trustee Fee Via Memo Partial Payment Of Us Banks Invoice For Cfd 20032
03-06-2024					(\$349.16)	\$617,393.26	U.S. Bank	Professional Services	Trustee Fee Via Memo Partial Payment Of Us Banks Invoice For Cfd 20042
03-06-2024					(\$349.16)	\$617,044.10	U.S. Bank	Professional Services	Trustee Fee Via Memo Partial Payment Of Us Banks Invoice For Cfd 20046
04-01-2024	\$2,495.38					\$619,539.48		Interest	Interest Earnings



Subfund: 217281007 - Costs of Issuance Account									
Date	Interest	Deposits	Transfers In	Transfers Out	Expenditures	Balance	Payee	Reference	Description
05-01-2024	\$2,417.87					\$621,957.35		Interest	Interest Earnings
05-06-2024					(\$6,250.03)	\$615,707.32	Standard and Poors	Rating Agency	Cost of Issuance Via Wire INVOICE 11468173 FOR RATING SERVICE FEE
06-03-2024	\$2,488.31					\$618,195.63		Interest	Interest Earnings
	\$7,482.70	\$0.00	\$669,954.45	(\$11.18)	(\$59,230.34)	\$618,195.63			DATE RANGE BALANCE
Subfund Total	\$7,482.70	\$0.00	\$669,954.45	(\$11.18)	(\$59,230.34)	\$618,195.63	Total for 217281007 - Costs of Issuance Account		
Fund Total	\$45,697.28	\$327,144.18	\$3,852,599.66	(\$37,160.04)	(\$66,032.84)	\$4,122,248.24	Total for CFD No. 2003-1 (Series 2024 Special Tax Refunding)		
Grand Total	\$181,139.61	\$10,458,900.59	\$15,522,483.19	(\$9,839,662.47)	(\$12,200,612.68)	\$4,122,248.24	Grand Total for Selected Funds/SubFunds		

Exhibit G

Annual Special Tax Roll for Fiscal Year 2024/2025

Moreno Valley Unified School District
Community Facilities District No. 2003-1
Fiscal Year 2024/2025 Special Tax Roll

Tract	Lot	Assessor's Parcel Number	Maximum Special Tax	Assigned Special Tax
29504	1	487-190-001	\$3,430.78	\$3,207.14
29504	2	487-190-002	\$3,430.78	\$2,966.14
29504	3	487-190-003	\$3,430.78	\$3,320.82
29504	4	487-190-004	\$3,430.78	\$2,740.32
29504	5	487-190-005	\$3,430.78	\$3,207.14
29504	6	487-190-006	\$3,430.78	\$2,541.76
29504	7	487-190-007	\$3,430.78	\$3,051.02
29504	8	487-190-008	\$3,430.78	\$2,966.14
29504	9	487-190-009	\$3,430.78	\$3,320.82
29504	10	487-190-010	\$3,430.78	\$2,740.32
29504	11	487-190-011	\$3,430.78	\$3,207.14
29504	12	487-190-012	\$3,430.78	\$3,051.02
29504	13	487-190-013	\$3,430.78	\$2,966.14
29504	14	487-190-014	\$3,430.78	\$2,740.32
29504	15	487-191-001	\$3,430.78	\$3,135.90
29504	16	487-191-002	\$3,430.78	\$2,541.76
29504	17	487-191-003	\$3,430.78	\$2,966.14
29504	18	487-191-004	\$3,430.78	\$3,051.02
29504	19	487-191-005	\$3,430.78	\$3,320.82
29504	20	487-191-006	\$3,430.78	\$3,207.14
29504	21	487-191-007	\$3,430.78	\$2,740.32
29504	22	487-191-008	\$3,430.78	\$3,320.82
29504	23	487-191-009	\$3,430.78	\$2,541.76
29504	24	487-191-010	\$3,430.78	\$3,207.14
29504	39	487-191-011	\$3,430.78	\$3,051.02
29504	40	487-191-012	\$3,430.78	\$3,320.82
29504	41	487-191-013	\$3,430.78	\$3,207.14
29504	42	487-191-014	\$3,430.78	\$2,740.32
29504	43	487-191-015	\$3,430.78	\$3,135.90
29504	44	487-191-016	\$3,430.78	\$2,740.32
29504	45	487-191-017	\$3,430.78	\$3,051.02
29504	46	487-191-018	\$3,430.78	\$3,207.14
29504	47	487-191-019	\$3,430.78	\$2,541.76
29504	48	487-191-020	\$3,430.78	\$2,966.14
29504	49	487-191-021	\$3,430.78	\$2,740.32
29504	25	487-192-001	\$3,430.78	\$3,207.14
29504	26	487-192-002	\$3,430.78	\$2,740.32
29504	27	487-192-003	\$3,430.78	\$2,541.76
29504	28	487-192-004	\$3,430.78	\$2,966.14
29504	29	487-192-005	\$3,430.78	\$3,135.90
29504	30	487-192-006	\$3,430.78	\$3,207.14
29504	31	487-192-007	\$3,430.78	\$3,320.82

Moreno Valley Unified School District
Community Facilities District No. 2003-1
Fiscal Year 2024/2025 Special Tax Roll

Tract	Lot	Assessor's Parcel Number	Maximum Special Tax	Assigned Special Tax
29504	32	487-192-008	\$3,430.78	\$3,051.02
29504	33	487-192-009	\$3,430.78	\$2,740.32
29504	34	487-192-010	\$3,430.78	\$3,207.14
29504	35	487-192-011	\$3,430.78	\$3,320.82
29504	36	487-192-012	\$3,430.78	\$2,541.76
29504	37	487-192-013	\$3,430.78	\$3,320.82
29504	38	487-192-014	\$3,430.78	\$3,207.14
29504	50	487-193-001	\$3,430.78	\$2,966.14
29504	51	487-193-002	\$3,430.78	\$3,207.14
29504	52	487-193-003	\$3,430.78	\$3,320.82
29504	53	487-193-004	\$3,430.78	\$3,051.02
29504	54	487-193-005	\$3,430.78	\$3,207.14
29504	55	487-193-006	\$3,430.78	\$2,966.14
29504	56	487-193-007	\$3,430.78	\$2,541.76
29504	57	487-193-008	\$3,430.78	\$2,740.32
29504	58	487-193-009	\$3,430.78	\$3,207.14
29504	59	487-193-010	\$3,430.78	\$3,320.82
29504	60	487-193-011	\$3,430.78	\$3,207.14
29504	61	487-193-012	\$3,430.78	\$3,320.82
29504	62	487-193-013	\$3,430.78	\$3,135.90
29504	63	487-193-014	\$3,430.78	\$2,966.14
29504	64	487-193-015	\$3,430.78	\$3,320.82
29504	65	487-193-016	\$3,430.78	\$3,207.14
29504	66	487-193-017	\$3,430.78	\$3,135.90
29504	67	487-193-018	\$3,430.78	\$2,966.14
29504	68	487-193-019	\$3,430.78	\$3,051.02
29504	69	487-193-020	\$3,430.78	\$2,740.32
29504	70	487-193-021	\$3,430.78	\$3,051.02
29504	71	487-193-022	\$3,430.78	\$3,320.82
29504	72	487-193-023	\$3,430.78	\$3,135.90
29504	73	487-193-024	\$3,430.78	\$2,740.32
29504	74	487-193-025	\$3,430.78	\$3,320.82
29504	75	487-193-026	\$3,430.78	\$2,740.32
29504	76	487-193-027	\$3,430.78	\$3,320.82
29504	77	487-193-028	\$3,430.78	\$3,207.14
29860-1	1	487-200-001	\$3,430.78	\$2,740.32
29860-1	2	487-200-002	\$3,430.78	\$3,051.02
29860-1	3	487-200-003	\$3,430.78	\$3,320.82
29860-1	4	487-200-004	\$3,430.78	\$3,207.14
29860-1	5	487-200-005	\$3,430.78	\$3,320.82
29860-1	6	487-200-006	\$3,430.78	\$3,051.02
29860-1	7	487-200-007	\$3,430.78	\$2,541.76

Moreno Valley Unified School District
Community Facilities District No. 2003-1
Fiscal Year 2024/2025 Special Tax Roll

Tract	Lot	Assessor's Parcel Number	Maximum Special Tax	Assigned Special Tax
29860-1	8	487-200-008	\$3,430.78	\$3,320.82
29860-1	9	487-200-009	\$3,430.78	\$3,135.90
29860-1	10	487-200-010	\$3,430.78	\$3,207.14
29860-1	11	487-200-011	\$3,430.78	\$3,320.82
29860-1	12	487-200-012	\$3,430.78	\$2,740.32
29860-1	13	487-200-013	\$3,430.78	\$3,320.82
29860-1	14	487-200-014	\$3,430.78	\$3,135.90
29860-1	15	487-201-001	\$3,430.78	\$2,966.14
29860-1	16	487-201-002	\$3,430.78	\$3,207.14
29860-1	17	487-201-003	\$3,430.78	\$2,541.76
29860-1	18	487-201-004	\$3,430.78	\$3,320.82
29860-1	19	487-201-005	\$3,430.78	\$3,207.14
29860-1	20	487-201-006	\$3,430.78	\$2,740.32
29860-1	21	487-201-007	\$3,430.78	\$3,320.82
29860-2	41	487-201-008	\$3,430.78	\$2,541.76
29860-2	42	487-201-009	\$3,430.78	\$3,135.90
29860-1	22	487-202-001	\$3,430.78	\$3,207.14
29860-1	23	487-202-002	\$3,430.78	\$3,320.82
29860-1	24	487-202-003	\$3,430.78	\$3,135.90
29860-1	25	487-202-004	\$3,430.78	\$2,740.32
29860-1	26	487-202-005	\$3,430.78	\$3,207.14
29860-1	27	487-202-006	\$3,430.78	\$3,051.02
29860-1	28	487-202-007	\$3,430.78	\$3,207.14
29860-1	29	487-202-008	\$3,430.78	\$2,740.32
29860-1	30	487-202-009	\$3,430.78	\$3,320.82
29860-1	31	487-202-010	\$3,430.78	\$3,207.14
29860-1	32	487-202-011	\$3,430.78	\$2,740.32
29860-1	33	487-202-012	\$3,430.78	\$2,966.14
29860-1	34	487-202-013	\$3,430.78	\$3,135.90
29860-1	35	487-202-014	\$3,430.78	\$3,320.82
29860-1	36	487-202-015	\$3,430.78	\$3,051.02
29860-1	37	487-202-016	\$3,430.78	\$2,740.32
29860-1	38	487-202-017	\$3,430.78	\$3,320.82
29860-1	39	487-202-018	\$3,430.78	\$3,207.14
29860-1	40	487-202-019	\$3,430.78	\$2,740.32
29860-1	41	487-202-020	\$3,430.78	\$2,966.14
29860-1	42	487-202-021	\$3,430.78	\$3,320.82
29860-1	43	487-202-022	\$3,430.78	\$3,207.14
29860-1	44	487-202-023	\$3,430.78	\$3,135.90
29860-2	23	487-202-024	\$3,430.78	\$2,740.32
29860-2	24	487-202-025	\$3,430.78	\$3,320.82
29860-2	25	487-202-026	\$3,430.78	\$2,740.32

Moreno Valley Unified School District
Community Facilities District No. 2003-1
Fiscal Year 2024/2025 Special Tax Roll

Tract	Lot	Assessor's Parcel Number	Maximum Special Tax	Assigned Special Tax
29860-2	26	487-202-027	\$3,430.78	\$3,320.82
29860-1	45	487-203-001	\$3,430.78	\$2,541.76
29860-1	46	487-203-002	\$3,430.78	\$3,320.82
29860-1	47	487-203-003	\$3,430.78	\$3,135.90
29860-1	48	487-203-004	\$3,430.78	\$3,207.14
29860-1	49	487-203-005	\$3,430.78	\$2,966.14
29860-1	50	487-203-006	\$3,430.78	\$2,740.32
29860-2	43	487-203-007	\$3,430.78	\$3,207.14
29860-2	44	487-203-008	\$3,430.78	\$3,051.02
29860-2	45	487-203-009	\$3,430.78	\$3,320.82
29860-2	46	487-203-010	\$3,430.78	\$2,740.32
29860-2	47	487-203-011	\$3,430.78	\$3,135.90
29860-2	48	487-203-012	\$3,430.78	\$3,320.82
29860-1	51	487-204-001	\$3,430.78	\$2,966.14
29860-1	52	487-204-002	\$3,430.78	\$2,740.32
29860-1	53	487-204-003	\$3,430.78	\$3,207.14
29860-1	54	487-204-004	\$3,430.78	\$3,135.90
29860-1	55	487-204-005	\$3,430.78	\$2,541.76
29860-2	1	487-204-006	\$3,430.78	\$3,207.14
29860-2	2	487-204-007	\$3,430.78	\$3,135.90
29860	1	487-204-008	\$3,430.78	\$2,740.32
29860	2	487-204-009	\$3,430.78	\$3,320.82
29860	3	487-204-010	\$3,430.78	\$3,207.14
29860	4	487-204-011	\$3,430.78	\$2,541.76
29860	5	487-204-012	\$3,430.78	\$3,135.90
29860	6	487-204-013	\$3,430.78	\$3,320.82
29860	7	487-204-014	\$3,430.78	\$3,207.14
29860-2	3	487-210-001	\$3,430.78	\$3,320.82
29860-2	4	487-210-002	\$3,430.78	\$3,207.14
29860-2	5	487-210-003	\$3,430.78	\$2,740.32
29860-2	6	487-210-004	\$3,430.78	\$3,207.14
29860-2	7	487-210-005	\$3,430.78	\$3,320.82
29860-2	8	487-210-006	\$3,430.78	\$3,135.90
29860-2	9	487-210-007	\$3,430.78	\$3,207.14
29860	8	487-210-008	\$3,430.78	\$2,740.32
29860	9	487-210-009	\$3,430.78	\$2,966.14
29860	10	487-210-010	\$3,430.78	\$3,051.02
29860	11	487-210-011	\$3,430.78	\$3,320.82
29860	12	487-210-012	\$3,430.78	\$2,541.76
29860	13	487-210-013	\$3,430.78	\$3,207.14
29860	14	487-210-014	\$3,430.78	\$3,320.82
29860-2	10	487-211-001	\$3,430.78	\$2,966.14

Moreno Valley Unified School District
Community Facilities District No. 2003-1
Fiscal Year 2024/2025 Special Tax Roll

Tract	Lot	Assessor's Parcel Number	Maximum Special Tax	Assigned Special Tax
29860-2	11	487-211-002	\$3,430.78	\$2,740.32
29860-2	12	487-211-003	\$3,430.78	\$3,207.14
29860-2	13	487-211-004	\$3,430.78	\$3,135.90
29860-2	14	487-211-005	\$3,430.78	\$3,320.82
29860-2	15	487-211-006	\$3,430.78	\$2,541.76
29860	31	487-211-007	\$3,430.78	\$3,320.82
29860	32	487-211-008	\$3,430.78	\$3,135.90
29860	33	487-211-009	\$3,430.78	\$3,320.82
29860	34	487-211-010	\$3,430.78	\$2,740.32
29860	35	487-211-011	\$3,430.78	\$3,207.14
29860	36	487-211-012	\$3,430.78	\$3,320.82
29860-2	16	487-212-001	\$3,430.78	\$3,051.02
29860-2	17	487-212-002	\$3,430.78	\$2,740.32
29860-2	18	487-212-003	\$3,430.78	\$3,320.82
29860-2	19	487-212-004	\$3,430.78	\$3,207.14
29860-2	20	487-212-005	\$3,430.78	\$3,320.82
29860-2	21	487-212-006	\$3,430.78	\$3,135.90
29860-2	22	487-212-007	\$3,430.78	\$3,207.14
29860-2	27	487-212-008	\$3,430.78	\$3,207.14
29860-2	28	487-212-009	\$3,430.78	\$3,135.90
29860-2	29	487-212-010	\$3,430.78	\$3,320.82
29860-2	30	487-212-011	\$3,430.78	\$2,740.32
29860-2	31	487-212-012	\$3,430.78	\$3,320.82
29860-2	32	487-212-013	\$3,430.78	\$3,207.14
29860-2	33	487-212-014	\$3,430.78	\$3,135.90
29860-2	34	487-213-001	\$3,430.78	\$3,207.14
29860-2	35	487-213-002	\$3,430.78	\$2,740.32
29860-2	36	487-213-003	\$3,430.78	\$3,051.02
29860-2	37	487-213-004	\$3,430.78	\$2,541.76
29860-2	38	487-213-005	\$3,430.78	\$3,207.14
29860-2	39	487-213-006	\$3,430.78	\$2,740.32
29860-2	40	487-213-007	\$3,430.78	\$3,320.82
29860	29	487-213-008	\$3,430.78	\$2,541.76
29860	30	487-213-009	\$3,430.78	\$2,966.14
29860-2	49	487-214-001	\$3,430.78	\$2,541.76
29860-2	50	487-214-002	\$3,430.78	\$3,320.82
29860-2	51	487-214-003	\$3,430.78	\$3,135.90
29860-2	52	487-214-004	\$3,430.78	\$3,207.14
29860-2	53	487-214-005	\$3,430.78	\$2,740.32
29860-2	54	487-214-006	\$3,430.78	\$2,966.14
29860-2	55	487-214-007	\$3,430.78	\$3,320.82
29860-2	56	487-214-008	\$3,430.78	\$3,135.90

Moreno Valley Unified School District
Community Facilities District No. 2003-1
Fiscal Year 2024/2025 Special Tax Roll

Tract	Lot	Assessor's Parcel Number	Maximum Special Tax	Assigned Special Tax
29860-2	57	487-214-009	\$3,430.78	\$2,740.32
29860-2	58	487-214-010	\$3,430.78	\$3,320.82
29860-2	59	487-214-011	\$3,430.78	\$3,051.02
29860-2	60	487-214-012	\$3,430.78	\$3,207.14
29860	15	487-215-001	\$3,430.78	\$2,740.32
29860	16	487-215-002	\$3,430.78	\$3,320.82
29860	17	487-215-003	\$3,430.78	\$3,135.90
29860	18	487-215-004	\$3,430.78	\$2,966.14
29860	19	487-215-005	\$3,430.78	\$3,207.14
29860	20	487-215-006	\$3,430.78	\$3,135.90
29860	21	487-215-007	\$3,430.78	\$3,320.82
29860	22	487-215-008	\$3,430.78	\$3,207.14
29860	23	487-215-009	\$3,430.78	\$2,740.32
29860	24	487-215-010	\$3,430.78	\$3,207.14
29860	25	487-215-011	\$3,430.78	\$3,320.82
29860	26	487-215-012	\$3,430.78	\$3,207.14
29860	27	487-215-013	\$3,430.78	\$3,135.90
29860	28	487-215-014	\$3,430.78	\$3,320.82

Total Parcels	228
Total Taxable Parcels	228
Total Maximum Annual Special Tax	\$782,217.84
Total Assigned Special Tax	\$697,558.94