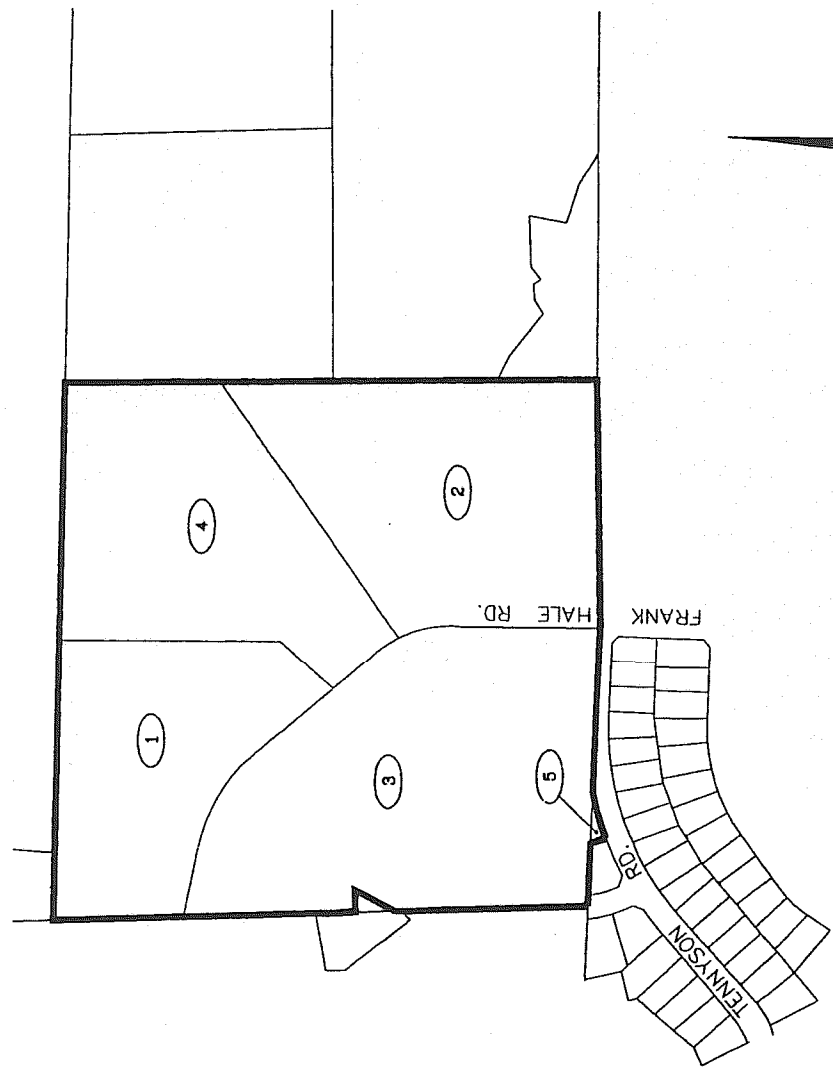


PROPOSED BOUNDARY MAP OF
COMMUNITY FACILITIES DISTRICT NO. 2004-1
OF THE
MORENO VALLEY UNIFIED SCHOOL DISTRICT
COUNTY OF RIVERSIDE
STATE OF CALIFORNIA



LOT DESIGNATION

LOT	TRACT	ASSESSOR'S PARCEL NO.
1	25901	256-160-016
2	26901	256-160-003
3	26901	256-160-024*
4	26901	256-160-001
5	26901	256-311-009

* AS ADJUSTED BY LOT LINE ADJUSTMENT #928 BY THE CITY OF MORENO VALLEY RECORDED 08/27/03.

I HEREBY CERTIFY THAT THE WITHIN MAP SHOWING THE PROPOSED BOUNDARIES OF COMMUNITY FACILITIES DISTRICT NO. 2004-1, RIVERSIDE COUNTY, STATE OF CALIFORNIA, WAS APPROVED BY THE BOARD OF EDUCATION OF THE MORENO VALLEY UNIFIED SCHOOL DISTRICT AT A REGULAR MEETING THEREOF HELD ON THE 28th DAY OF January, 2004, AT ITS RESOLUTION NO. 2004-1.

TRACY B. JACKAR
CLERK OF THE BOARD OF EDUCATION
MORENO VALLEY UNIFIED SCHOOL DISTRICT
STATE OF CALIFORNIA

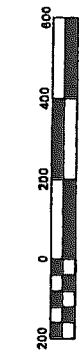
I HEREBY CERTIFY THAT THE WITHIN MAP SHOWING THE PROPOSED BOUNDARIES OF COMMUNITY FACILITIES DISTRICT NO. 2004-1, RIVERSIDE COUNTY, STATE OF CALIFORNIA, WAS APPROVED BY THE BOARD OF EDUCATION OF THE MORENO VALLEY UNIFIED SCHOOL DISTRICT AT A REGULAR MEETING THEREOF HELD ON THE 28th DAY OF January, 2004, AT ITS RESOLUTION NO. 2004-1.

TRACY B. JACKAR
CLERK OF THE BOARD OF EDUCATION
MORENO VALLEY UNIFIED SCHOOL DISTRICT
STATE OF CALIFORNIA

FILED THIS 28th DAY OF January, 2004, AT THE HOUR OF 8 O'CLOCK
A.M. IN BOOK 45 OF MAPS OF ASSESSMENT AND COMMUNITY FACILITIES
DISTRICTS AT PAGES 15 AND AS INSTRUMENT NO. 2004-00141 IN THE
OFFICE OF THE COUNTY RECORDER OF RIVERSIDE COUNTY, STATE OF CALIFORNIA. \$7.00

GARY L. ORSO
COUNTY RECORDER OF RIVERSIDE COUNTY
County Clerk
DEPUTY

NOTE: FOR PARTICULARS OF LINES AND DIMENSIONS OF ASSESSOR'S PARCELS, REFERENCE IS MADE TO THE RIVERSIDE COUNTY ASSESSOR PARCEL MAPS.



LEGEND
CFD BOUNDARY
LOT DESIGNATION

Special District Financing
& Administration
333 South Juniper Street, Suite 208
Escondido, California 92025
Tel: (760) 233-2630 Fax: (760) 233-2831
(03-017 JANUARY 2004)