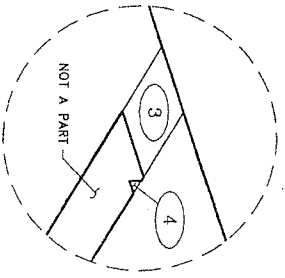
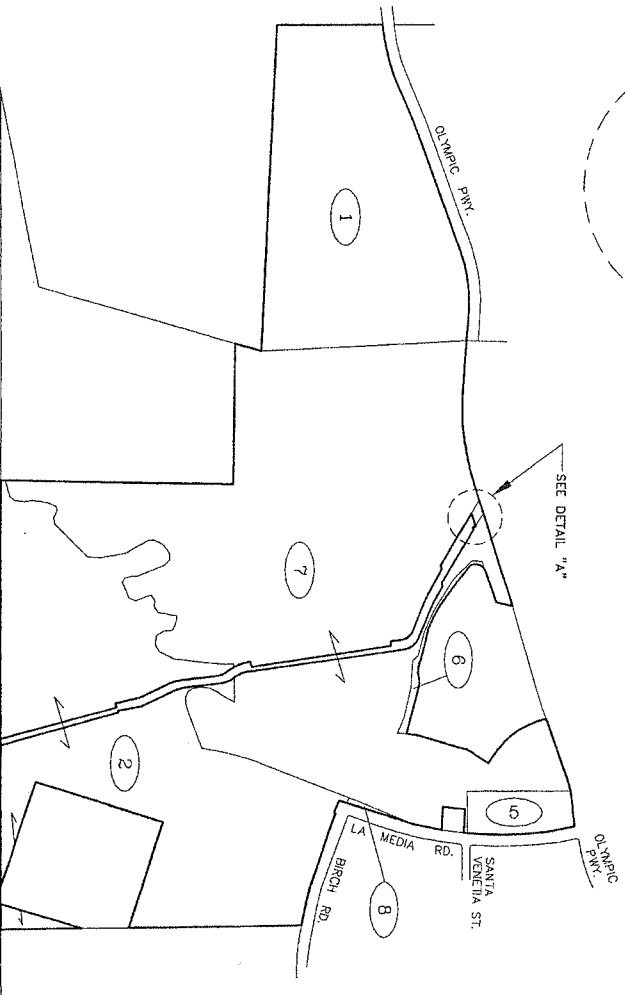


AMENDED BOUNDARY MAP OF
 COMMUNITY FACILITIES DISTRICT NO. 17
 (OTAY PROJECT LP - VILLAGES 2 & 7)

CHULA VISTA ELEMENTARY SCHOOL DISTRICT
 COUNTY OF SAN DIEGO
 STATE OF CALIFORNIA



DETAIL "A"
 NO SCALE



LOT DESIGNATION

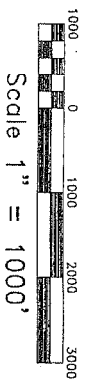
LOT NO.	ASSESSOR'S PARCEL NUMBER
1	644-030-10-00
2	644-030-14-00
3	644-030-16-00
4	644-030-17-00
5	644-030-18-00
6	644-030-19-00
7	644-030-21-00
8	644-030-23-00

Conformed Copy

THE ORIGINAL OF THIS DOCUMENT
 WAS RECORDED ON OCT 28 2005
 DOCUMENT NUMBER 2005-28282
 RECORD 2 SAN DIEGO COUNTY RECORDER'S OFFICE
 SAN DIEGO CALIFORNIA
 TIME 3:13 PM

LEGEND

- CFD BOUNDARY
- ASSESSOR PARCEL BOUNDARY
- LOT DESIGNATION



2005-0929282

BK 39 PG 90

FILED IN THE OFFICE OF THE SECRETARY OF THE BOARD OF EDUCATION OF THE SCHOOL DISTRICT
 THIS 13th DAY OF October, 2005.

[Signature]
 KARELL J. BUNINGS, E.D.D.
 SECRETARY OF THE BOARD OF EDUCATION
 CHULA VISTA ELEMENTARY SCHOOL DISTRICT
 STATE OF CALIFORNIA

I HEREBY CERTIFY THAT THE WITHIN AMENDED MAP SHOWING BOUNDARIES OF COMMUNITY FACILITIES DISTRICT 17 OF THE CHULA VISTA ELEMENTARY SCHOOL DISTRICT, COUNTY OF SAN DIEGO, STATE OF CALIFORNIA, WAS APPROVED AND ADOPTED BY THE BOARD OF EDUCATION OF THE CHULA VISTA ELEMENTARY SCHOOL DISTRICT AT A REGULAR MEETING HELD ON THE 13th DAY OF October, 2005. BY ITS RESOLUTION NO. 2005-06-46. THIS BOUNDARY MAP AMENDS AND SUPERSEDES THE PROPOSED BOUNDARY MAP FOR COMMUNITY FACILITIES DISTRICT NO. 17 OF THE CHULA VISTA ELEMENTARY SCHOOL DISTRICT, COUNTY OF SAN DIEGO, STATE OF CALIFORNIA, PRIOR RECORDED AT BOOK 39 AND PAGE 80 OF MAPS OF ASSESSMENT AND COMMUNITY FACILITIES DISTRICTS, ON SEPTEMBER 21, 2005, IN THE OFFICE OF THE COUNTY RECORDER FOR THE COUNTY OF SAN DIEGO, STATE OF CALIFORNIA.

[Signature]
 KARELL J. BUNINGS, E.D.D.
 SECRETARY OF THE BOARD OF EDUCATION
 CHULA VISTA ELEMENTARY SCHOOL DISTRICT
 STATE OF CALIFORNIA

FILED THIS _____ DAY OF _____, 2005, AT THE HOUR OF _____ O'CLOCK _____ M.
 AS DOCUMENT NO. _____ IN BOOK _____ OF MAPS OF ASSESSMENT AND
 COMMUNITY FACILITIES DISTRICTS AT PAGE _____ IN THE OFFICE OF THE COUNTY RECORDER IN
 THE COUNTY OF SAN DIEGO, CALIFORNIA.

COUNTY RECORDER
 COUNTY OF SAN DIEGO
 STATE OF CALIFORNIA

NOTE: FOR PARTICULARS OF LINES AND DIMENSIONS OF ASSESSOR'S PARCELS, REFERENCE IS MADE TO THE SAN DIEGO COUNTY ASSESSOR'S PARCEL MAPS.

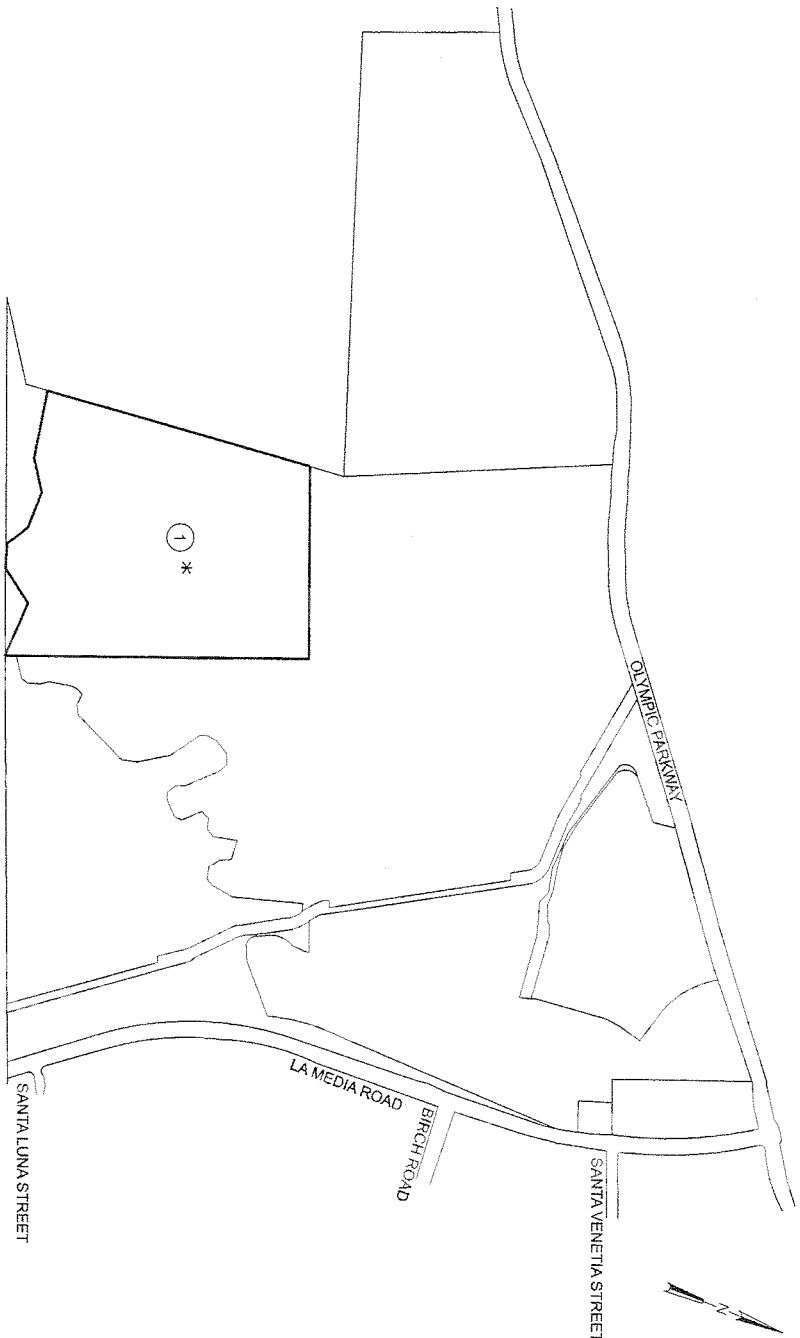
Special District Financing
 & Administration
 437 W. Grand Avenue
 Escondido, California 92025
 Tel: (760) 233-2630 Fax: (760) 233-2831

(95-016 OCTOBER 2005)

**BOUNDARY MAP OF
COMMUNITY FACILITIES DISTRICT NO. 17
ANNEXATION NO. 1**

(OTAY PROJECT, LP - PORTION VILLAGE 2)
OF THE
CHULA VISTA ELEMENTARY SCHOOL DISTRICT
COUNTY OF SAN DIEGO
STATE OF CALIFORNIA

ANNEXATION NO. 1	
LOT NO.	ASSESSOR'S PARCEL NO.
1	644 0390-07-00 (PORTION *)
*	EXCLUDES THAT PORTION OF PARCEL 3 OF PARCEL MAP NO. 19223 RECORDED ON JANUARY 18, 2006, COUNTY OF SAN DIEGO, WHICH IS INCLUDED IN PARCEL MAP NO. 644 0390-07-00 (LOT 1 OF THIS BOUNDARY MAP).



SCALE: 1"=800'



THE GENERAL OF THE DOCUMENT WAS RECORDED IN JUN 2006. EVIDENCE NUMBER 20643844. SHEET 1 OF 1. COUNTY OF SAN DIEGO COUNTY RECORDER OFFICE. FILE # 259 439

LEGEND:
① LOT NUMBER
_____ COMMUNITY FACILITIES DISTRICT BOUNDARY

FILED IN THE OFFICE OF THE SECRETARY OF THE BOARD OF EDUCATION OF THE SCHOOL DISTRICT THIS _____ DAY OF _____, 2006.

Janet J. Billings
JANET J. BILLINGS, ED. D.
SECRETARY, BOARD OF EDUCATION
CHULA VISTA ELEMENTARY SCHOOL DISTRICT
STATE OF CALIFORNIA

I HEREBY CERTIFY THAT THE WITHIN MAP SHOWING BOUNDARIES OF TERRITORY ANNEXED TO COMMUNITY FACILITIES DISTRICT NO. 17 OF THE CHULA VISTA ELEMENTARY SCHOOL DISTRICT COUNTY OF SAN DIEGO, STATE OF CALIFORNIA WAS APPROVED BY THE BOARD OF EDUCATION OF THE SCHOOL DISTRICT AT A REGULAR MEETING THEREON, HELD ON THE _____ DAY OF _____, 2006, BY ITS RESOLUTION NO. 2005-06-125. THIS BOUNDARY MAP AMENDS THE AMENDED BOUNDARY MAP FOR COMMUNITY FACILITIES DISTRICT NO. 17 OF THE CHULA VISTA ELEMENTARY SCHOOL DISTRICT COUNTY OF SAN DIEGO, STATE OF CALIFORNIA, PRIOR RECORDED AT BOOK 39, PAGE 90, OF MAPS OF ASSESSMENT AND COMMUNITY FACILITIES DISTRICTS, ON OCTOBER 18, 2005, IN THE OFFICE OF THE COUNTY RECORDER FOR THE COUNTY OF SAN DIEGO, STATE OF CALIFORNIA.

Janet J. Billings
JANET J. BILLINGS, ED. D.
SECRETARY, BOARD OF EDUCATION
CHULA VISTA ELEMENTARY SCHOOL DISTRICT
STATE OF CALIFORNIA

FILED THIS **28th** DAY OF **June**, 2006, AT THE HOUR OF **4:54** P. M. AS DOCUMENT NO. _____ IN BOOK _____ OF MAPS OF ASSESSMENT AND COMMUNITY FACILITIES DISTRICTS AT PAGE _____ IN THE OFFICE OF THE COUNTY RECORDER IN THE COUNTY OF SAN DIEGO, CALIFORNIA.

Debra S. S.
DEBRA S. S., COUNTY RECORDER
COUNTY OF SAN DIEGO
STATE OF CALIFORNIA

NOTE: FOR PARTICULARS OF LINES AND DIMENSIONS OF ASSESSORS' PARCELS, REFERENCE IS MADE TO THE SAN DIEGO COUNTY ASSESSORS' PARCEL MAPS.

SHEET	1 OF 1
DATE	JUNE 2006
JOB NO.	AN17-01-06-06

SDFEA
SPECIAL DISTRICT FINANCING
& ADMINISTRATION
437 WEST GRAND AVENUE
ESCONDIDO, CALIFORNIA 92025
TELEPHONE: (760)233-2830
FAX: (760)233-2831

2006-0459404

BK 40 PG 55