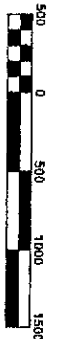
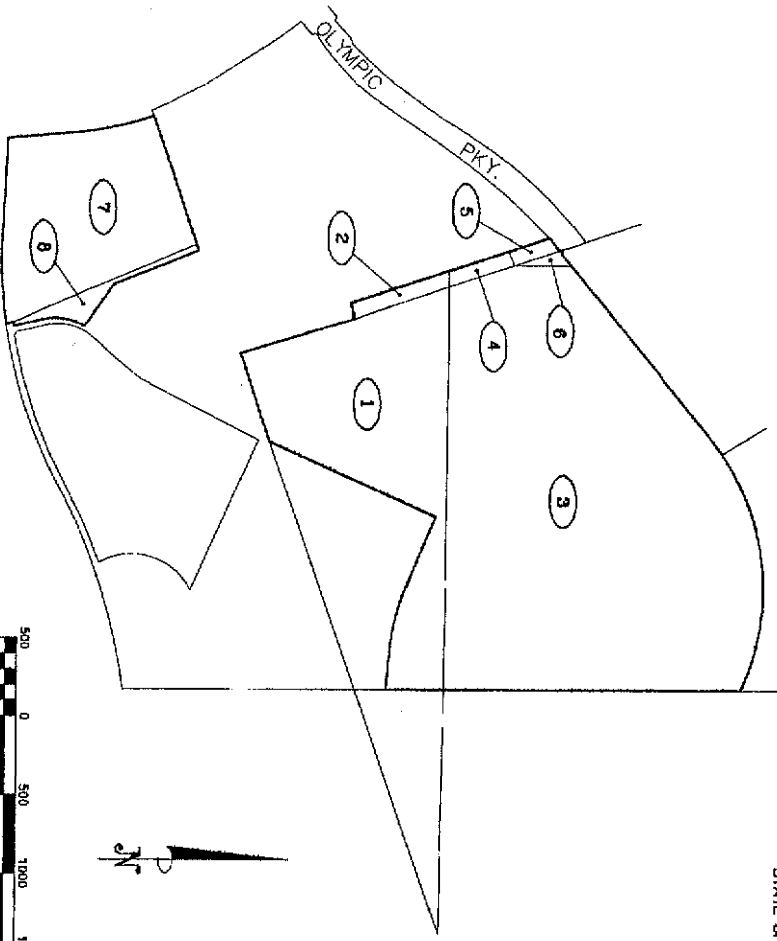


**BOUNDARY MAP OF
COMMUNITY FACILITIES DISTRICT NO. 15
CHULA VISTA ELEMENTARY SCHOOL DISTRICT
COUNTY OF SAN DIEGO
STATE OF CALIFORNIA**

SHEET 1 OF 1



LEGEND

CFD BOUNDARY
LOT DESIGNATION

LOT NO.	ASSESSOR'S PARCEL NO.
1	643-051-01-00 (*)
2	643-051-02-00
3	643-051-03-00
4	643-051-04-00
5	643-051-05-00
6	643-051-06-00
7	643-052-03-00
8	643-052-01-00

LOT DESIGNATION

(*) THE PORTION OF LOT 1 TO BE INCLUDED WITHIN THE BOUNDARIES OF CFD NO. 15 IS REPRESENTED BY ALL OF ASSESSOR'S PARCEL NO. 643-051-01 EXCEPT THAT PORTION MORE PARTICULARLY DESCRIBED AS FOLLOWS:

THAT EASTERN PORTION OF PARCEL 2 OF PARCEL MAP 48388 RECORDED ON SEPTEMBER 7, 2007 AS INSTRUMENT NO. 2007-064-2883 WHICH IS NOT INCLUDED IN CHULA VISTA TRACT NO. 02-05 074V BANGLO VILLAGE & UNIT 1 * MAP NO. 1 (MAP 4448) CONSTITUTING APPROXIMATELY 9.576 ACRES.

FILED IN THE OFFICE OF THE SECRETARY OF THE BOARD OF EDUCATION OF THE SCHOOL DISTRICT THIS 2nd DAY OF December, 2002.

[Signature]
CORNELL BILLINGS, ED.D.
SECRETARY OF THE BOARD OF EDUCATION
CHULA VISTA ELEMENTARY SCHOOL DISTRICT
STATE OF CALIFORNIA

I HEREBY CERTIFY THAT THE WITHIN MAP SHOWING BOUNDARIES OF COMMUNITY FACILITIES DISTRICT NO. 15 OF THE CHULA VISTA ELEMENTARY SCHOOL DISTRICT, COUNTY OF SAN DIEGO, STATE OF CALIFORNIA WAS APPROVED BY THE BOARD OF EDUCATION OF THE SF-002 DISTRICT AT A REGULAR MEETING THEREOF HELD ON THE 29th DAY OF December, 2002, BY ITS RESOLUTION NO. 2002-03-17.

[Signature]
ANGELL BILLINGS, ED.D.
SECRETARY OF THE BOARD OF EDUCATION
CHULA VISTA ELEMENTARY SCHOOL DISTRICT
STATE OF CALIFORNIA

FILED 2:15 DAY OF December, 2002 AT THE HOUR OF 4:53 O'CLOCK P.M. IN BOOK 16 AND PAGE 01 OF MAPS OF ASSESSMENT AND COMMUNITY FACILITIES DISTRICTS, AS DOCUMENT NO. 2002-1154156 IN THE OFFICE OF THE COUNTY RECORDER IN THE COUNTY OF SAN DIEGO, CALIFORNIA.

**conformed
copy**

NOTE: FOR PARTICULARS OF LINES AND DIMENSIONS OF ASSESSOR'S PARCELS, REFERENCE IS MADE TO THE SAN DIEGO COUNTY ASSESSOR PARCEL MAPS.

Special District Financing
& Administration
333 South Juniper Street, Suite 206
Encinitas, California 92025
Tel: (760) 233-2830 Fax: (760) 233-2831

02-021 OCTOBER 2002

BK 36 P6 59

2002-1154156