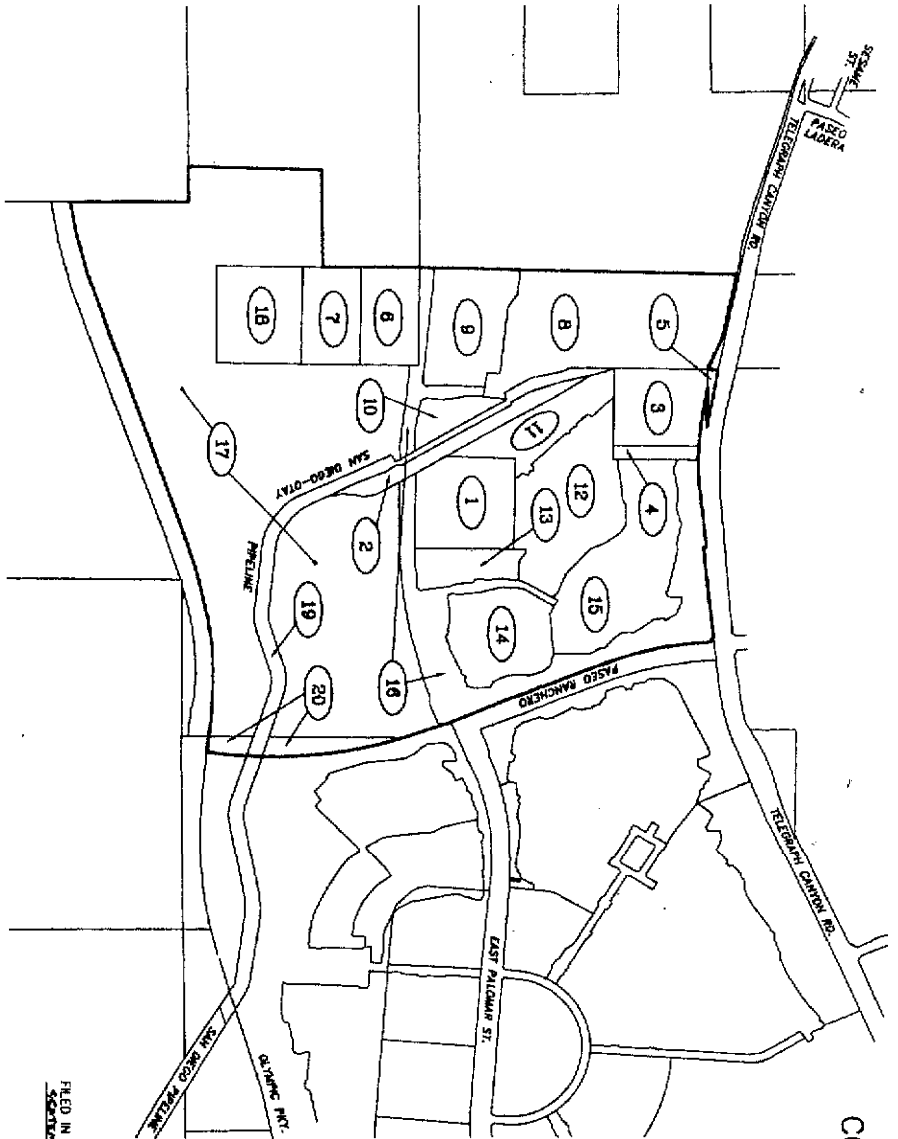
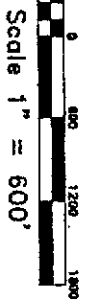
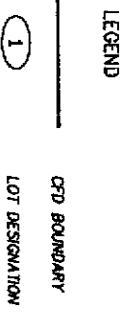


PROPOSED BOUNDARY MAP OF  
 COMMUNITY FACILITIES DISTRICT NO. 12  
 (OTAY RANCH - VILLAGE I WEST)  
 CHULA VISTA ELEMENTARY SCHOOL DISTRICT  
 COUNTY OF SAN DIEGO  
 STATE OF CALIFORNIA



LOT NO.	ASSESSOR'S PARCEL NO.
1	641-030-03-00
2	641-030-04-00
3	641-030-08-00
4	641-030-10-00
5	641-030-15-00
6	641-060-02-00
7	641-060-03-00
8	641-071-01-00
9	641-071-02-00
10	641-071-03-00
11	641-071-04-00
12	641-071-05-00
13	641-071-06-00
14	641-071-07-00
15	641-071-08-00
16	641-071-09-00
17	641-071-10-00 P.M.
18	641-071-11-00
19	641-071-12-00
20	642-073-35-00 P.M.



Special District Planning  
 & Administration  
 333 South Juniper Street, Suite 208  
 Escondido, California 92025  
 Tel: (760) 233-7830 Fax: (760) 233-2431

(00-018) OCTOBER 2000

FILED IN THE OFFICE OF THE SECRETARY OF THE BOARD OF EDUCATION OF THE SCHOOL DISTRICT THIS 25<sup>TH</sup> DAY OF September 2000.

Ms. S. M.  
 DR. UBA S. OR  
 SECRETARY OF THE BOARD OF EDUCATION  
 CHULA VISTA ELEMENTARY SCHOOL DISTRICT  
 STATE OF CALIFORNIA

Ms. S. M.  
 DR. UBA S. OR  
 SECRETARY OF THE BOARD OF EDUCATION  
 CHULA VISTA ELEMENTARY SCHOOL DISTRICT  
 STATE OF CALIFORNIA

**Conformed  
 Copy**

I HEREBY CERTIFY THAT THE WITHIN MAP SHOWING BOUNDARIES OF COMMUNITY FACILITIES DISTRICT NO. 12 OF THE CHULA VISTA ELEMENTARY SCHOOL DISTRICT OF SAN DIEGO STATE OF CALIFORNIA WAS APPROVED BY THE BOARD OF EDUCATION OF THE SCHOOL DISTRICT AT A REGULAR MEETING THEREOF HELD ON THE 25<sup>TH</sup> DAY OF September 2000 BY ITS RESOLUTION NO. 2000-0140

FILED THIS 4<sup>TH</sup> DAY OF October 2000 AT THE HOUR OF 2:00 O'CLOCK P.M. IN BOOK 84 Pg 66 OF MAPS OF ASSESSMENT AND COMMUNITY FACILITIES DISTRICTS IN THE OFFICE OF THE COUNTY RECORDER IN THE COUNTY OF SAN DIEGO, CALIFORNIA.  
Leslie J. Howard  
 COUNTY RECORDER  
 COUNTY OF SAN DIEGO  
 STATE OF CALIFORNIA

2000-0532916