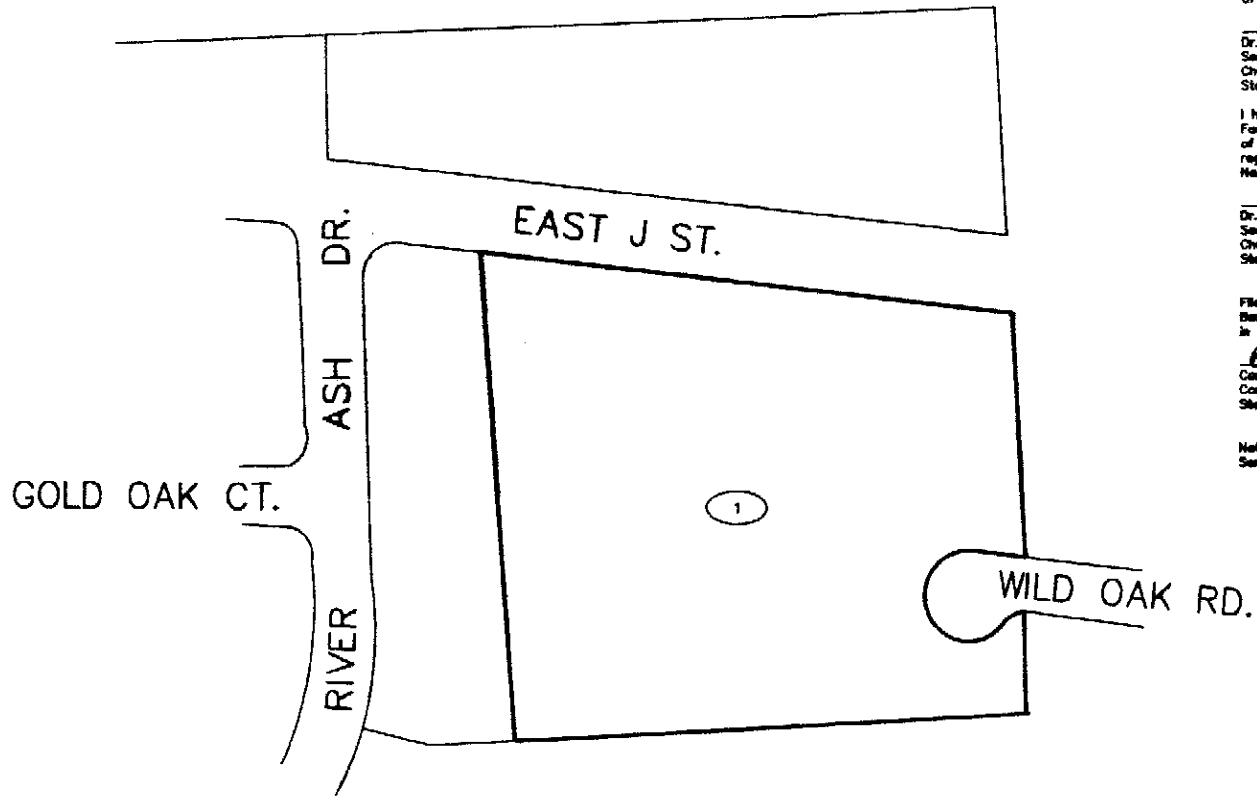


PROPOSED BOUNDARY MAP OF
COMMUNITY FACILITIES DISTRICT NO. 10
(BENNETT PROPERTY - BELLA NEVONA)

CHULA VISTA ELEMENTARY SCHOOL DISTRICT
COUNTY OF SAN DIEGO
STATE OF CALIFORNIA



Filed in the Office of the Secretary of the Board of Education this 22nd day of August, 1988.

John S. Gil
Dr. Lible S. Gil
Secretary, Board of Education
Chula Vista Elementary School District
State of California

I hereby certify that the within map showing the proposed boundaries of Community Facilities District No. 10 of the Chula Vista Elementary School District, County of San Diego, State of California, was approved by the Board of Education at a regular meeting thereof, held on the 22nd day of August, 1988, by its Resolution No. 98-02-03.

John S. Gil
Dr. Lible S. Gil
Secretary, Board of Education
Chula Vista Elementary School District
State of California

Filed this 9 day of September, 1988, at the hour of 8:40 o'clock A.M. in Book 52 and Page 57 of Maps of Assessment and Community Facilities Districts in the Office of the County Registrar in the County of San Diego, State of California.

B. J. ...
County Registrar
County of San Diego
State of California

Note: For particulars of lines and dimensions of assessor's parcels, reference is made to the San Diego County assessor parcel maps.

00' 40' 0' 80'
SCALE: 1" = 80'



Special District Financing & Administration

10000 Via Fanny, Suite 100
San Diego, California 92127
Tel: (619) 579-3000 Fax: (619) 579-3000

LEGEND

———— COMMUNITY FACILITIES DISTRICT BOUNDARY

① LOT NUMBER

CFD PROPERTY

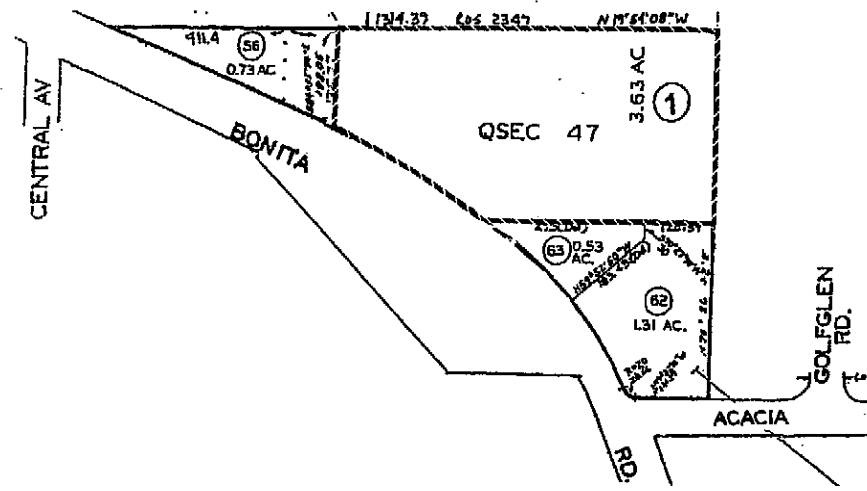
LOT NO.	ASSESSOR'S PARCEL NUMBER
1	640-090-48-00

1998-571043

**BOUNDARY MAP OF
COMMUNITY FACILITIES DISTRICT NO. 10, ANNEXATION NO.1**

SHEET 1 OF 1

(ENCORE SENIOR VILLAGE)
CHULA VISTA ELEMENTARY SCHOOL DISTRICT
COUNTY OF SAN DIEGO
STATE OF CALIFORNIA



LEGEND

CFD BOUNDARY
LOT NO. ①

LOT DESIGNATION

LOT NO.	ASSESSOR'S PARCEL NO.
1	593-050-57-00

FILED THIS _____ DAY OF _____, 199____, AT THE HOUR OF _____ O'CLOCK _____ M.
IN BOOK _____ OF MAPS OF ASSESSMENT AND COMMUNITY FACILITIES DISTRICTS IN THE OFFICE
OF THE COUNTY RECORDER IN THE COUNTY OF SAN DIEGO.

COUNTY RECORDER
COUNTY OF SAN DIEGO
STATE OF CALIFORNIA

Special District Financing & Administration
333 South Juniper Street, Suite 208
Escondido, California 92025
Tel: (760)233-2630 Fax: (760)233-2631

FILED IN THE OFFICE OF THE SECRETARY OF THE BOARD OF EDUCATION OF THE SCHOOL DISTRICT
THIS _____ DAY OF _____, 199____

SECRETARY OF THE BOARD OF EDUCATION
CHULA VISTA ELEMENTARY SCHOOL DISTRICT
STATE OF CALIFORNIA

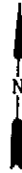
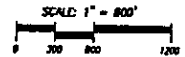
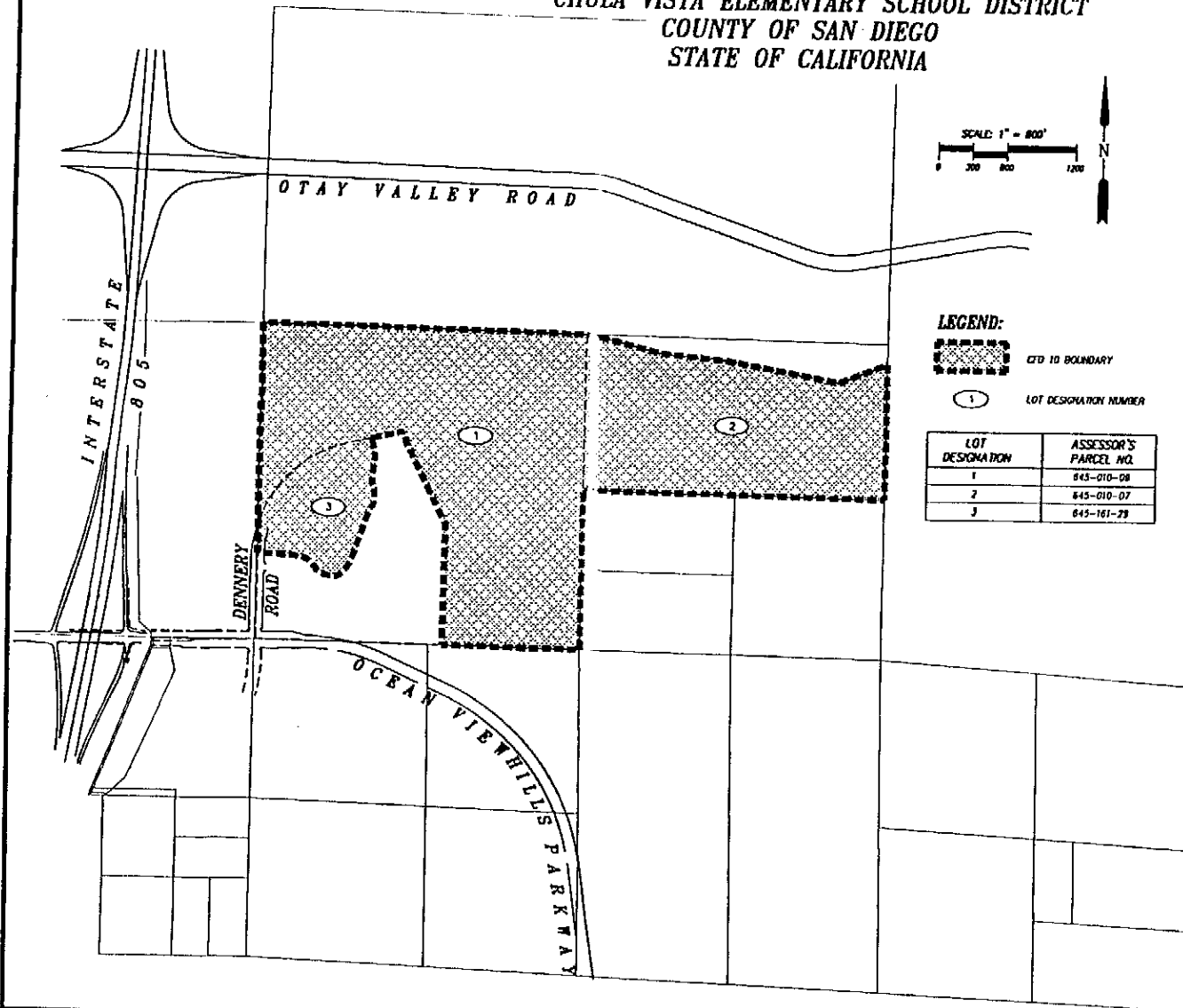
I HEREBY CERTIFY THAT THE WITHIN MAP SHOWING BOUNDARIES OF TERRITORY ANNEXED TO COMMUNITY FACILITIES DISTRICT NO. 10 OF THE CHULA VISTA ELEMENTARY SCHOOL DISTRICT, COUNTY OF SAN DIEGO, STATE OF CALIFORNIA, WAS APPROVED BY THE BOARD OF EDUCATION OF THE SCHOOL DISTRICT AT A REGULAR MEETING THEREOF, HELD ON THE _____ DAY OF _____, 199____, BY ITS RESOLUTION NO. _____. THIS ANNEXATION MAP AMENDS THE BOUNDARY MAP FOR COMMUNITY FACILITIES DISTRICT NO. 10 OF THE CHULA VISTA ELEMENTARY SCHOOL DISTRICT, COUNTY OF SAN DIEGO, STATE OF CALIFORNIA, PRIOR RECORDED AT BOOK _____ OF MAPS OF ASSESSMENT AND COMMUNITY FACILITIES DISTRICT, AT PAGE _____, IN THE OFFICE OF THE COUNTY RECORDER FOR THE COUNTY OF SAN DIEGO, CALIFORNIA.

SECRETARY OF THE BOARD OF EDUCATION
CHULA VISTA ELEMENTARY SCHOOL DISTRICT
STATE OF CALIFORNIA

EXHIBIT A

PROPOSED BOUNDARY MAP OF COMMUNITY FACILITIES DISTRICT NO. 10 ANNEXATION NO. 2
CHULA VISTA ELEMENTARY SCHOOL DISTRICT
COUNTY OF SAN DIEGO
STATE OF CALIFORNIA

SHEET 1 OF 1



LEGEND:

-  CTD 10 BOUNDARY
-  LOT DESIGNATION NUMBER

LOT DESIGNATION	ASSESSOR'S PARCEL NO.
1	845-010-08
2	845-010-07
3	845-161-29

FILED THIS _____ DAY OF _____, 1999, AT THE HOUR OF _____ O'CLOCK _____ AM/PM IN BOOK _____ AND PAGE _____ OF MAPS OF ASSESSMENT AND COMMUNITY FACILITIES DISTRICTS IN THE OFFICE OF THE COUNTY RECORDER IN THE COUNTY OF SAN DIEGO, CALIFORNIA.

COUNTY RECORDER
 COUNTY OF SAN DIEGO
 STATE OF CALIFORNIA

FILED IN THE OFFICE OF THE SECRETARY OF THE BOARD OF EDUCATION OF THE SCHOOL DISTRICT THIS _____ DAY OF _____, 1999.

SECRETARY OF THE BOARD OF EDUCATION
 CHULA VISTA ELEMENTARY SCHOOL DISTRICT
 STATE OF CALIFORNIA

I HEREBY CERTIFY THAT THE WITHIN MAP SHOWING BOUNDARIES OF TERRITORY ANNEXED TO COMMUNITY FACILITIES DISTRICT NO. 10 OF THE CHULA VISTA ELEMENTARY SCHOOL DISTRICT, COUNTY OF SAN DIEGO, STATE OF CALIFORNIA, WAS APPROVED BY THE BOARD OF EDUCATION OF THE SCHOOL DISTRICT AT A REGULAR MEETING THEREOF, HELD ON THE _____ DAY OF _____, 1999, BY ITS RESOLUTION NO. _____. THIS ANNEXATION MAP AMENDS THE BOUNDARY MAP FOR COMMUNITY FACILITIES DISTRICT NO. 10 OF THE CHULA VISTA ELEMENTARY SCHOOL DISTRICT, COUNTY OF SAN DIEGO, STATE OF CALIFORNIA, PRIOR RECORDED AT BOOK 32 OF MAPS OF ASSESSMENT AND COMMUNITY FACILITIES DISTRICT, AT PAGE 39, IN THE OFFICE OF THE COUNTY RECORDER FOR THE COUNTY OF SAN DIEGO, CALIFORNIA.

SECRETARY OF THE BOARD OF EDUCATION
 CHULA VISTA ELEMENTARY SCHOOL DISTRICT
 STATE OF CALIFORNIA

NOTE:
 FOR PARTICULARS OF LINES AND DIMENSIONS OF ASSESSOR'S PARCELS, REFERENCE IS MADE TO THE SAN DIEGO COUNTY ASSESSOR PARCEL MAPS.

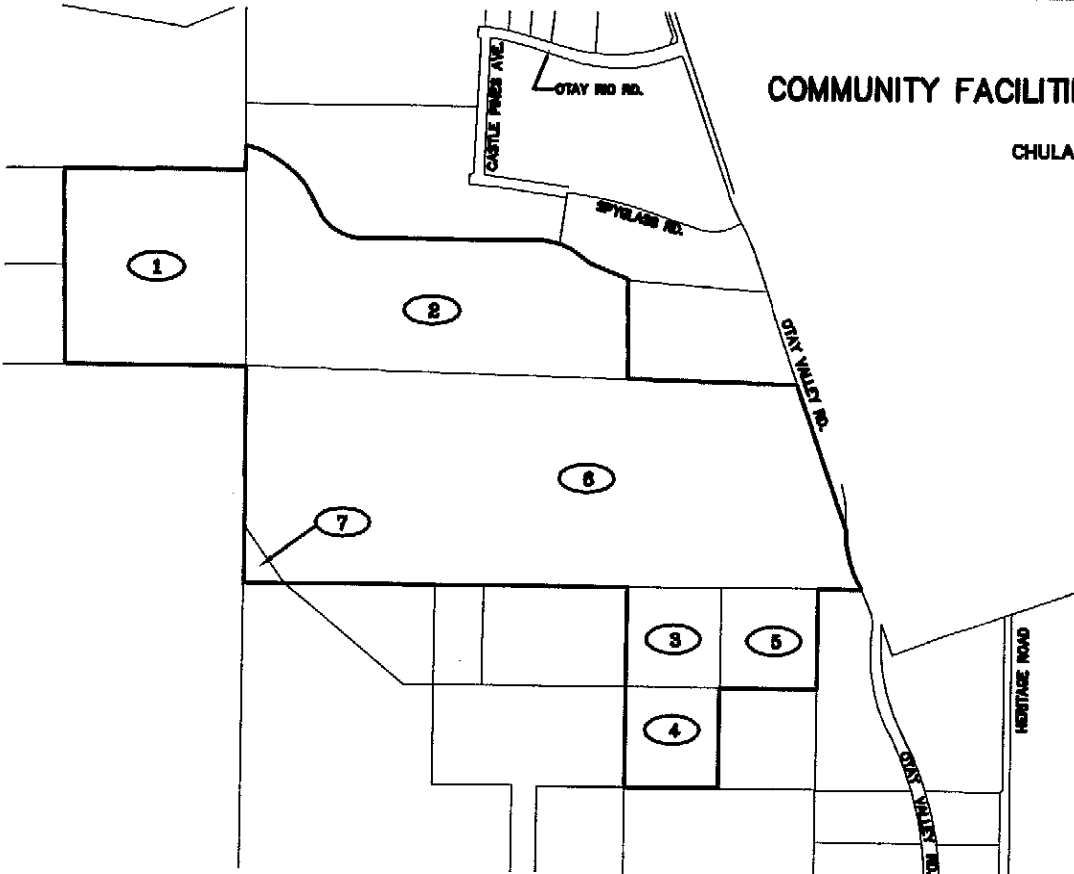


Project Design Consultants
 PLANNING ENGINEERING SURVEYING
 700 "B" Street, Suite 800, San Diego, CA 92101
 619-526-8477 FAX 619-526-8111
 11-24-99
 I:\WORK\1999\10\100-1600C 12/20/99

BK 33 P 6 66 DN: 1999-0822585

12/20/99

**BOUNDARY MAP OF
COMMUNITY FACILITIES DISTRICT NO. 10, ANNEXATION NO. 3
(ROBINHOOD RIDGE)
CHULA VISTA ELEMENTARY SCHOOL DISTRICT
COUNTY OF SAN DIEGO
STATE OF CALIFORNIA**

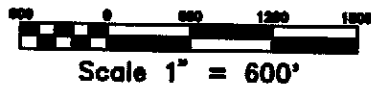


LEGEND

-  **CFD BOUNDARY**
-  **LOT DESIGNATION**

LOT DESIGNATION

LOT NO.	ASSESSOR'S PARCEL NO.
1	645-010-03-00
2	645-020-15-00
3	645-050-05-00
4	645-050-06-00
5	645-050-08-00
6	645-051-02-00
7	645-051-03-00



FILED IN THE OFFICE OF THE SECRETARY OF THE BOARD OF EDUCATION OF THE SCHOOL DISTRICT THIS _____ DAY OF _____ 199__

DR. LIBIA S. GL
SECRETARY OF THE BOARD OF EDUCATION
CHULA VISTA ELEMENTARY SCHOOL DISTRICT
STATE OF CALIFORNIA

I HEREBY CERTIFY THAT THE WITHIN MAP SHOWING BOUNDARIES OF TERRITORY ANNEXED TO COMMUNITY FACILITIES DISTRICT NO. 10 OF THE CHULA VISTA ELEMENTARY SCHOOL DISTRICT, COUNTY OF SAN DIEGO, STATE OF CALIFORNIA, WAS APPROVED BY THE BOARD OF EDUCATION OF THE SCHOOL DISTRICT AT A REGULAR MEETING THEREOF HELD ON THE _____ DAY OF _____ 199__ BY ITS RESOLUTION NO. _____. THIS ANNEXATION MAP AMENDS THE BOUNDARY MAP FOR COMMUNITY FACILITIES DISTRICT NO. 10 OF THE CHULA VISTA ELEMENTARY SCHOOL DISTRICT, COUNTY OF SAN DIEGO, STATE OF CALIFORNIA, PRIOR RECORDED AT BOOK 32 OF MAPS OF ASSESSMENT AND COMMUNITY FACILITIES DISTRICT, AT PAGE 59 IN THE OFFICE OF THE COUNTY RECORDER FOR THE COUNTY OF SAN DIEGO, CALIFORNIA.

DR. LIBIA S. GL
SECRETARY OF THE BOARD OF EDUCATION
CHULA VISTA ELEMENTARY SCHOOL DISTRICT
STATE OF CALIFORNIA

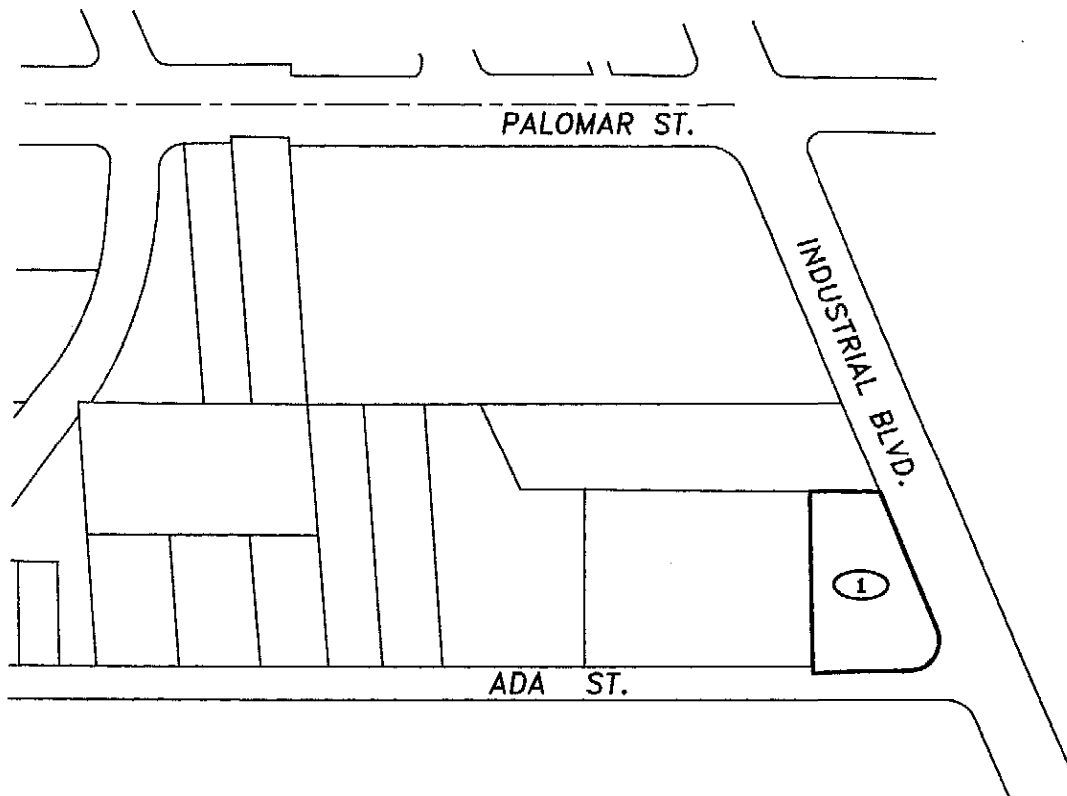
FILED THIS _____ DAY OF _____ 199__ AT THE HOUR OF _____ O'CLOCK ____ M. IN BOOK _____ OF MAPS OF ASSESSMENT AND COMMUNITY FACILITIES DISTRICTS IN THE OFFICE OF THE COUNTY RECORDER IN THE COUNTY OF SAN DIEGO, CALIFORNIA.

COUNTY RECORDER
COUNTY OF SAN DIEGO
STATE OF CALIFORNIA



NOTE: FOR PARTICULARS OF LINES AND DIMENSIONS OF ASSESSOR'S PARCELS, REFERENCE IS MADE TO THE SAN DIEGO COUNTY ASSESSOR PARCEL MAPS.

**Special District Financing
& Administration**
333 South Juniper Street, Suite 208
Escondido, California 92025
Tel (760) 233-2630 Fax (760) 233-2631

**BOUNDARY MAP OF
COMMUNITY FACILITIES DISTRICT NO. 10, ANNEXATION NO. 4**
(TROLLEY TRESTLE)
CHULA VISTA ELEMENTARY SCHOOL DISTRICT
COUNTY OF SAN DIEGO
STATE OF CALIFORNIA



LEGEND

-  CFD BOUNDARY
-  LOT DESIGNATION

LOT DESIGNATION

LOT NO.	ASSESSOR'S PARCEL NO.
1	822-020-71-00

FILED IN THE OFFICE OF THE SECRETARY OF THE BOARD OF EDUCATION OF THE SCHOOL DISTRICT
THIS _____ DAY OF _____ 2000.

SECRETARY OF THE BOARD OF EDUCATION
CHULA VISTA ELEMENTARY SCHOOL DISTRICT
STATE OF CALIFORNIA

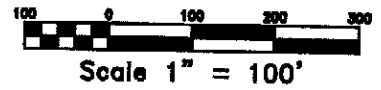
I HEREBY CERTIFY THAT THE WITHIN MAP SHOWING BOUNDARIES OF TERRITORY ANNEXED TO
COMMUNITY FACILITIES DISTRICT NO. 10 OF THE CHULA VISTA ELEMENTARY SCHOOL DISTRICT,
COUNTY OF SAN DIEGO, STATE OF CALIFORNIA, WAS APPROVED BY THE BOARD OF EDUCATION OF
THE SCHOOL DISTRICT AT A REGULAR MEETING THEREOF HELD ON THE _____ DAY OF
_____ 2000, BY ITS RESOLUTION NO. _____. THIS ANNEXATION MAP
AMENDS THE BOUNDARY MAP FOR COMMUNITY FACILITIES DISTRICT NO. 10 OF THE CHULA VISTA
ELEMENTARY SCHOOL DISTRICT, COUNTY OF SAN DIEGO, STATE OF CALIFORNIA, PRIOR RECORDED AT
BOOK 32 OF MAPS OF ASSESSMENT AND COMMUNITY FACILITIES DISTRICT, AT PAGE 39 IN THE
OFFICE OF THE COUNTY RECORDER FOR THE COUNTY OF SAN DIEGO, CALIFORNIA.

SECRETARY OF THE BOARD OF EDUCATION
CHULA VISTA ELEMENTARY SCHOOL DISTRICT
STATE OF CALIFORNIA

FILED THIS _____ DAY OF _____ 2000 AT THE HOUR OF _____ O'CLOCK
_____.M. IN BOOK _____ OF MAPS OF ASSESSMENT AND COMMUNITY FACILITIES DISTRICTS IN
THE OFFICE OF THE COUNTY RECORDER IN THE COUNTY OF SAN DIEGO, CALIFORNIA.

COUNTY RECORDER
COUNTY OF SAN DIEGO
STATE OF CALIFORNIA

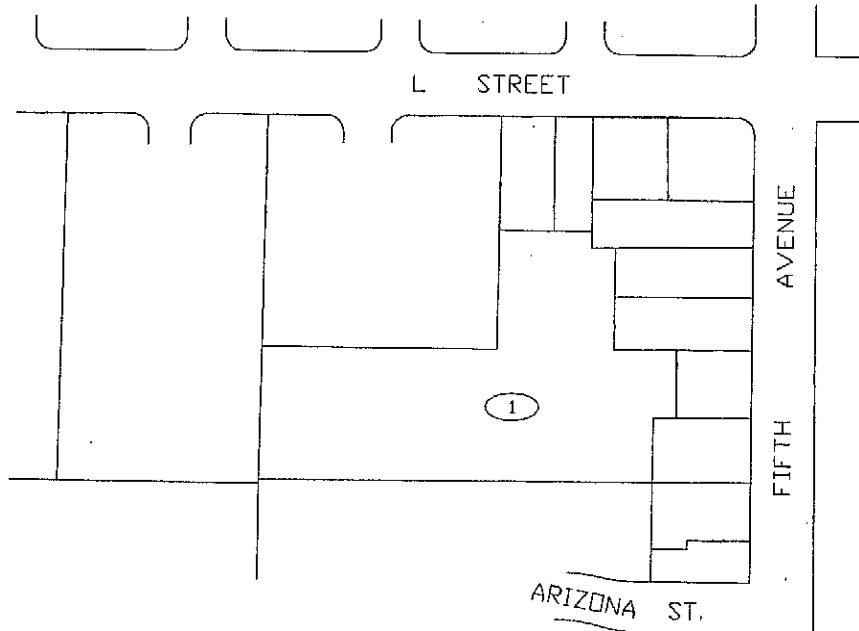
**Special District Financing
& Administration**
333 South Juniper Street, Suite 208
Escondido, California 92025
Tel: (760) 233-2830 Fax: (760) 233-2831



BOUNDARY MAP OF
COMMUNITY FACILITIES DISTRICT NO. 10
ANNEXATION NO. 5
(CEDAR PARK)
OF THE
CHULA VISTA ELEMENTARY SCHOOL DISTRICT
COUNTY OF SAN DIEGO
STATE OF CALIFORNIA

LOT DESIGNATION

LOT NO.	ASSESSOR'S PARCEL NO.
1	618-061-23-00



FILED IN THE OFFICE OF THE SECRETARY OF THE BOARD OF EDUCATION OF THE SCHOOL DISTRICT THIS 30th DAY OF November 2001.

Libia S. Gil
DR. LIBIA S. GIL
SECRETARY OF THE BOARD OF EDUCATION
CHULA VISTA ELEMENTARY SCHOOL DISTRICT
STATE OF CALIFORNIA

I HEREBY CERTIFY THAT THE WITHIN MAP SHOWING BOUNDARIES OF TERRITORY ANNEXED TO COMMUNITY FACILITIES DISTRICT NO. 10 OF THE CHULA VISTA ELEMENTARY SCHOOL DISTRICT, COUNTY OF SAN DIEGO, STATE OF CALIFORNIA, WAS APPROVED BY THE BOARD OF EDUCATION OF THE SCHOOL DISTRICT AT A REGULAR MEETING THEREOF HELD ON THE 11th DAY OF November 2001, BY ITS RESOLUTION NO. 2001-02-53. THIS ANNEXATION MAP AMENDS THE BOUNDARY MAP FOR COMMUNITY FACILITIES DISTRICT NO. 10 OF THE CHULA VISTA ELEMENTARY SCHOOL DISTRICT, COUNTY OF SAN DIEGO, STATE OF CALIFORNIA, PRIOR RECORDED AT BOOK 32 OF MAPS OF ASSESSMENT AND COMMUNITY FACILITIES DISTRICT, AT PAGE 59 IN THE OFFICE OF THE COUNTY RECORDER FOR THE COUNTY OF SAN DIEGO, CALIFORNIA.

Libia S. Gil
DR. LIBIA S. GIL
SECRETARY OF THE BOARD OF EDUCATION
CHULA VISTA ELEMENTARY SCHOOL DISTRICT
STATE OF CALIFORNIA

FILED THIS 12th DAY OF December 2001, AT THE HOUR OF 3:33 O'CLOCK P.M. AS DOCUMENT NO. 201-0931059 IN BOOK 35 OF MAPS OF ASSESSMENT AND COMMUNITY FACILITIES DISTRICTS AT PAGE 12 IN THE OFFICE OF THE COUNTY RECORDER IN THE COUNTY OF SAN DIEGO, CALIFORNIA.

Confirmed Copy

James A. Lombar
COUNTY RECORDER
COUNTY OF SAN DIEGO
STATE OF CALIFORNIA

Special District Financing
& Administration
333 South Juniper Street, Suite 208
Escondido, California 92025
Tel: (760) 233-2630 Fax: (760) 233-2631

LEGEND

- CFD BOUNDARY
- ① LOT DESIGNATION



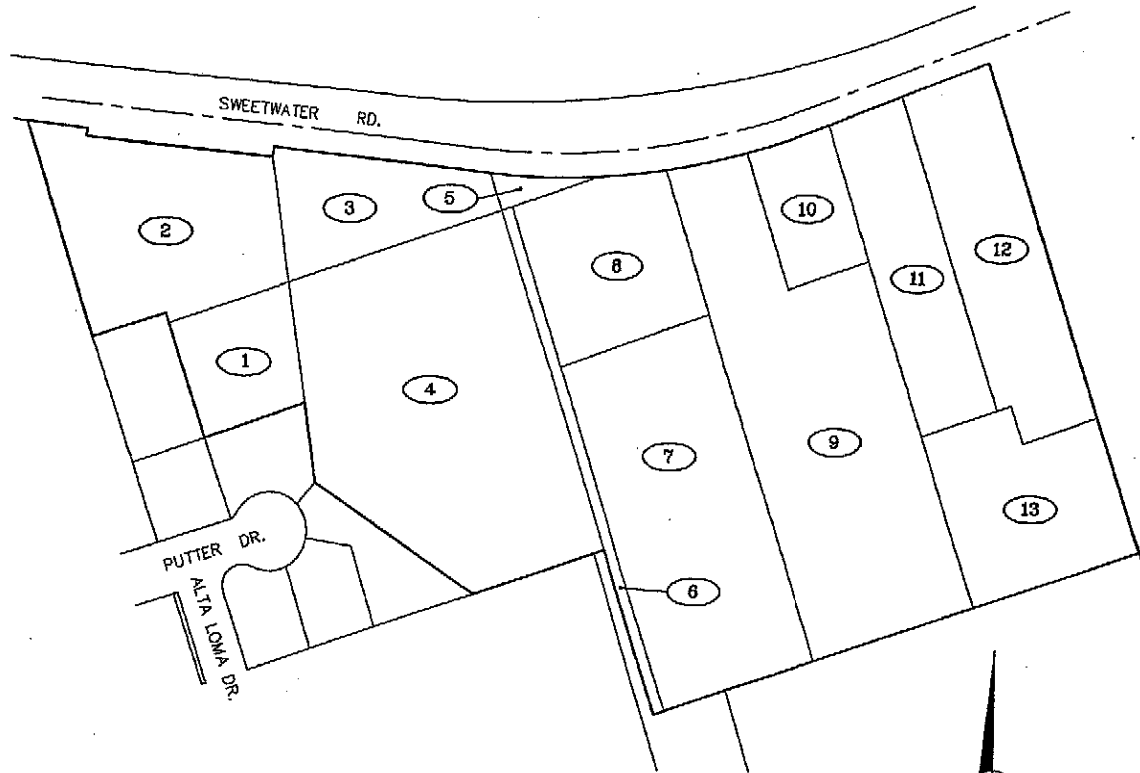
Scale 1" = 100'

PROPOSED BOUNDARY MAP OF
COMMUNITY FACILITIES DISTRICT NO. 10
ANNEXATION NO. 6
(BONITA CREEK)

OF THE
CHULA VISTA ELEMENTARY SCHOOL DISTRICT
COUNTY OF SAN DIEGO
STATE OF CALIFORNIA

LOT DESIGNATION

LOT	ASSESSOR'S PARCEL NO.
1	570-320-07-00
2	570-320-08-00
3	570-320-09-00
4	570-320-10-00
5	570-320-11-00
6	570-320-12-00
7	570-320-14-00
8	570-320-15-00
9	570-320-16-00
10	570-320-17-00
11	570-320-18-00
12	570-320-19-00
13	570-320-20-00



FILED IN THE OFFICE OF THE SECRETARY OF THE BOARD OF EDUCATION OF THE SCHOOL DISTRICT THIS 12th DAY OF March 2004.

David P. Bellamy
SECRETARY OF THE BOARD OF EDUCATION
CHULA VISTA ELEMENTARY SCHOOL DISTRICT
STATE OF CALIFORNIA

I HEREBY CERTIFY THAT THE WITHIN MAP SHOWING BOUNDARIES OF TERRITORY ANNEXED TO COMMUNITY FACILITIES DISTRICT NO. 10 OF THE CHULA VISTA ELEMENTARY SCHOOL DISTRICT, COUNTY OF SAN DIEGO, STATE OF CALIFORNIA, WAS APPROVED BY THE BOARD OF EDUCATION OF THE SCHOOL DISTRICT AT A REGULAR MEETING THEREOF HELD ON THE 20th DAY OF April, 2004, BY ITS RESOLUTION NO. 2004-0020. THIS ANNEXATION MAP AMENDS THE BOUNDARY MAP FOR COMMUNITY FACILITIES DISTRICT NO. 10 OF THE CHULA VISTA ELEMENTARY SCHOOL DISTRICT COUNTY OF SAN DIEGO, STATE OF CALIFORNIA, FIRST RECORDED AT BOOK 32 OF MAPS OF ASSESSMENT AND COMMUNITY FACILITIES DISTRICT, AT PAGE 59 IN THE OFFICE OF THE COUNTY RECORDER FOR THE COUNTY OF SAN DIEGO, CALIFORNIA.

David P. Bellamy
SECRETARY OF THE BOARD OF EDUCATION
CHULA VISTA ELEMENTARY SCHOOL DISTRICT
STATE OF CALIFORNIA

FILED THIS 28th DAY OF APRIL 2004 AT THE HOUR OF 9:18 O'CLOCK A.M. IN BOOK 32 AND PAGE 33 OF MAPS OF ASSESSMENT AND COMMUNITY FACILITIES DISTRICTS, AS DOCUMENT NO. 2004-037632 IN THE OFFICE OF THE COUNTY RECORDER IN THE COUNTY OF SAN DIEGO, CALIFORNIA.

Andria R. Garcia
COUNTY RECORDER
COUNTY OF SAN DIEGO
STATE OF CALIFORNIA

NOTE: FOR PARTICULARS OF LINES AND DIMENSIONS OF ASSESSOR'S PARCELS, REFERENCE IS MADE TO THE SAN DIEGO COUNTY ASSESSOR'S PARCEL MAPS.

Special District Financing
& Administration
333 South Juniper Street, Suite 208
Escondido, California 92025
Tel: (760) 233-2830 Fax: (760) 233-2631

(04-008 FEBRUARY 2004)

LEGEND

- GFD BOUNDARY
- LOT DESIGNATION



Scale 1" = 100'



BK 38

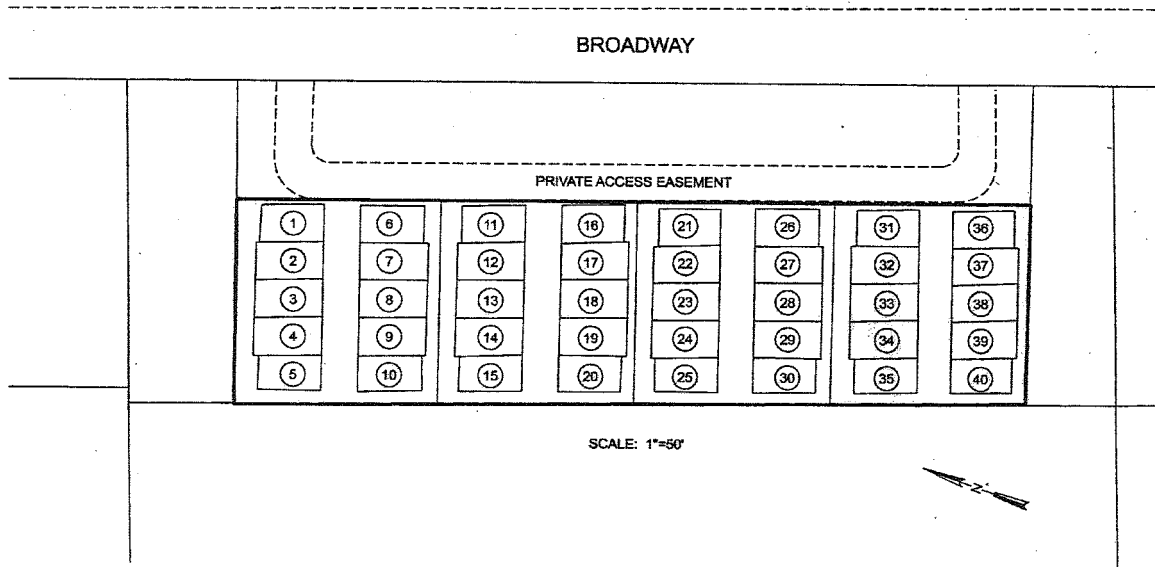
Conformed
Copy

PG 33

**BOUNDARY MAP OF
COMMUNITY FACILITIES DISTRICT NO. 10,
ANNEXATION NO. 7**

(SPOTLIGHT ON BROADWAY)

OF THE
CHULA VISTA ELEMENTARY SCHOOL DISTRICT
COUNTY OF SAN DIEGO
STATE OF CALIFORNIA



ANNEXATION NO. 7	
LOT NO.	ASSESSOR'S PARCEL NO.
1	571-200-62-01
2	571-200-62-02
3	571-200-62-03
4	571-200-62-04
5	571-200-62-05
6	571-200-62-06
7	571-200-62-07
8	571-200-62-08
9	571-200-62-09
10	571-200-62-10
11	571-200-63-01
12	571-200-63-02
13	571-200-63-03
14	571-200-63-04
15	571-200-63-05
16	571-200-63-06
17	571-200-63-07
18	571-200-63-08
19	571-200-63-09
20	571-200-63-10
21	571-200-64-01
22	571-200-64-02
23	571-200-64-03
24	571-200-64-04
25	571-200-64-05
26	571-200-64-06
27	571-200-64-07
28	571-200-64-08
29	571-200-64-09
30	571-200-64-10
31	571-200-65-01
32	571-200-65-02
33	571-200-65-03
34	571-200-65-04
35	571-200-65-05
36	571-200-65-06
37	571-200-65-07
38	571-200-65-08
39	571-200-65-09
40	571-200-65-10

THE ORIGINAL OF THIS DOCUMENT
WAS RECORDED ON MAR 15, 2005
DOCUMENT NUMBER 2005-0217095
GREGORY J. SMITH, COUNTY RECORDER
SAN DIEGO COUNTY RECORDERS OFFICE
TIME: 4:34 PM

SCALE: 1"=50'

FILED IN THE OFFICE OF THE SECRETARY OF THE BOARD OF EDUCATION
OF THE SCHOOL DISTRICT THIS 7th DAY OF March, 2005.

Lowell J. Billings
LOWELL J. BILLINGS, ED. D.
SECRETARY, BOARD OF EDUCATION
CHULA VISTA ELEMENTARY SCHOOL DISTRICT
STATE OF CALIFORNIA

FILED THIS 16th DAY OF MARCH, 2005, AT THE HOUR
OF 4:34 O'CLOCK P.M. AS DOCUMENT NO. 217095
IN BOOK NA OF MAPS OF ASSESSMENT AND COMMUNITY
FACILITIES DISTRICTS AT PAGE NA IN THE OFFICE OF THE COUNTY
RECORDER IN THE COUNTY OF SAN DIEGO, CALIFORNIA

Michael Herana
COUNTY RECORDER
COUNTY OF SAN DIEGO
STATE OF CALIFORNIA

I HEREBY CERTIFY THAT THE WITHIN MAP SHOWING BOUNDARIES OF TERRITORY
ANNEXED TO COMMUNITY FACILITIES DISTRICT NO. 10 OF THE CHULA VISTA
ELEMENTARY SCHOOL DISTRICT, COUNTY OF SAN DIEGO, STATE OF CALIFORNIA,
WAS APPROVED BY THE BOARD OF EDUCATION OF THE SCHOOL DISTRICT
AT A REGULAR MEETING THEREOF, HELD ON THE 15th DAY OF
March, 2005, BY ITS RESOLUTION NO. 2004-05-91. THIS BOUNDARY
MAP AMENDS THE BOUNDARY MAP FOR COMMUNITY FACILITIES DISTRICT NO. 10
OF THE CHULA VISTA ELEMENTARY SCHOOL DISTRICT, COUNTY OF SAN DIEGO,
STATE OF CALIFORNIA, PRIOR RECORDED BOOK 32, OF MAPS OF ASSESSMENT
AND COMMUNITY FACILITIES DISTRICTS, AT PAGE 59, IN THE OFFICE OF THE
COUNTY RECORDER FOR THE COUNTY OF SAN DIEGO, STATE OF CALIFORNIA.

Lowell J. Billings
LOWELL J. BILLINGS, ED. D.
SECRETARY, BOARD OF EDUCATION
CHULA VISTA ELEMENTARY SCHOOL DISTRICT
STATE OF CALIFORNIA

NOTE: FOR PARTICULARS OF LINES AND DIMENSIONS OF ASSESSOR'S
PARCELS, REFERENCE IS MADE TO THE SAN DIEGO COUNTY ASSESSOR'S
PARCEL MAPS.

LEGEND:

①

LOT NUMBER

COMMUNITY FACILITIES DISTRICT BOUNDARY

50 0 50 100
Scale In Feet

SHEET 1 OF 1
DATE FEBRUARY 2005
MAP NO. AN10-07-02-05

S DFA

SPECIAL DISTRICT FINANCING
& ADMINISTRATION

437 WEST GRAND AVENUE
ESCONDIDO, CALIFORNIA 92025
TELEPHONE: (760)233-2630
FAX: (760)233-2631

BK 39 PG 014

2005-217095

**BOUNDARY MAP OF
COMMUNITY FACILITIES DISTRICT NO. 10,
ANNEXATION NO. 8**

(BELLA LAGO)

OF THE
CHULA VISTA ELEMENTARY SCHOOL DISTRICT
COUNTY OF SAN DIEGO
STATE OF CALIFORNIA

ANNEXATION NO. 8	
LOT NO.	ASSESSOR'S PARCEL NO.
1	585-150-02-00
2	595-050-02-00
3	595-050-05-00
4	595-050-06-00

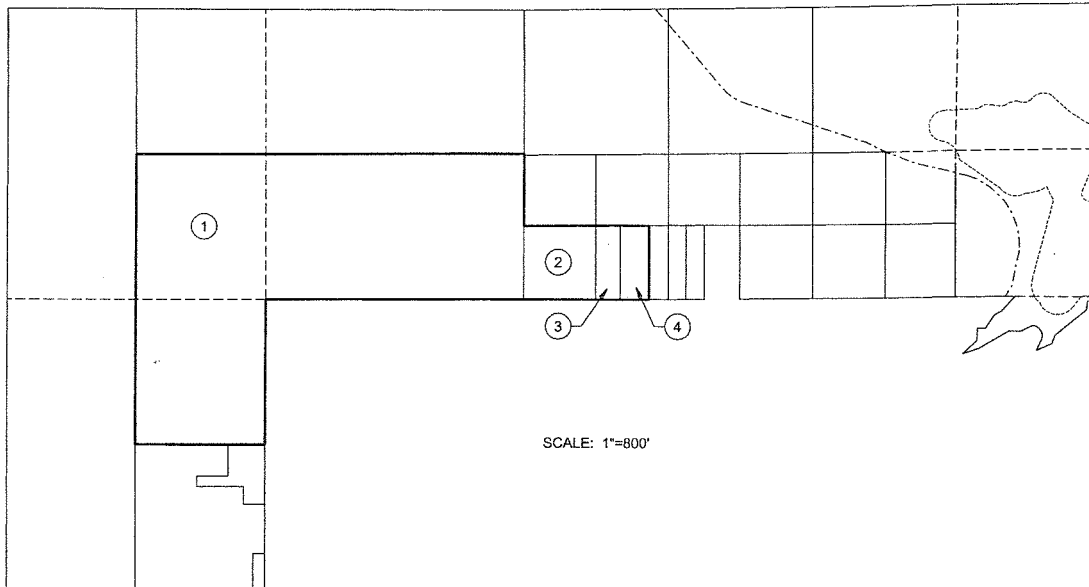
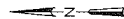
LEGEND:



LOT NUMBER



COMMUNITY FACILITIES DISTRICT BOUNDARY



SCALE: 1"=800'

FILED IN THE OFFICE OF THE SECRETARY OF THE BOARD OF EDUCATION
OF THE SCHOOL DISTRICT THIS 8TH DAY OF JUNE, 2006.

Lowell J. Billings
LOWELL J. BILLINGS, ED. D.
SECRETARY, BOARD OF EDUCATION
CHULA VISTA ELEMENTARY SCHOOL DISTRICT
STATE OF CALIFORNIA

I HEREBY CERTIFY THAT THE WITHIN MAP SHOWING BOUNDARIES OF TERRITORY
ANNEXED TO COMMUNITY FACILITIES DISTRICT NO. 10 OF THE CHULA VISTA
ELEMENTARY SCHOOL DISTRICT, COUNTY OF SAN DIEGO, STATE OF CALIFORNIA,
WAS APPROVED BY THE BOARD OF EDUCATION OF THE SCHOOL DISTRICT
AT A REGULAR MEETING THEREOF, HELD ON THE 20TH DAY OF
JUNE, 2006, BY ITS RESOLUTION NO. 2005-06-127. THIS BOUNDARY
MAP AMENDS THE BOUNDARY MAP FOR COMMUNITY FACILITIES DISTRICT NO. 10
OF THE CHULA VISTA ELEMENTARY SCHOOL DISTRICT, COUNTY OF SAN DIEGO,
STATE OF CALIFORNIA, PRIOR RECORDED BOOK 32, OF MAPS OF ASSESSMENT
AND COMMUNITY FACILITIES DISTRICTS, AT PAGE 59, IN THE OFFICE OF THE
COUNTY RECORDER FOR THE COUNTY OF SAN DIEGO, STATE OF CALIFORNIA.

Lowell J. Billings
LOWELL J. BILLINGS, ED. D.
SECRETARY, BOARD OF EDUCATION
CHULA VISTA ELEMENTARY SCHOOL DISTRICT
STATE OF CALIFORNIA

FILED THIS 29 DAY OF June, 2006, AT THE HOUR
OF 3:33 O'CLOCK P.M. AS DOCUMENT NO. 06-0462156 IN BOOK 40
OF MAPS OF ASSESSMENT AND COMMUNITY FACILITIES DISTRICTS AT PAGE 56 IN
THE OFFICE OF THE COUNTY RECORDER IN THE COUNTY OF SAN DIEGO, CALIFORNIA.

Gregory J. Smith
COUNTY RECORDER
COUNTY OF SAN DIEGO
STATE OF CALIFORNIA

NOTE: FOR PARTICULARS OF LINES AND DIMENSIONS OF ASSESSOR'S
PARCELS, REFERENCE IS MADE TO THE SAN DIEGO COUNTY ASSESSOR'S
PARCEL MAPS.



SHEET	1 OF 1
DATE	MAY 2006
JOB NO.	AN10-08-05-06

SDFA
SPECIAL DISTRICT FINANCING
& ADMINISTRATION

THE ORIGINAL OF THIS DOCUMENT
WAS RECORDED ON JUN 29 2006
EXHIBIT NUMBER 2006-1462156
GREGORY J. SMITH - COUNTY RECORDER
SAN DIEGO COUNTY RECORDERS OFFICE
TIME 3:33 PM

437 WEST GRAND AVENUE
ESCONDIDO, CALIFORNIA 92025
TELEPHONE: (760)233-2630
FAX: (760)233-2631

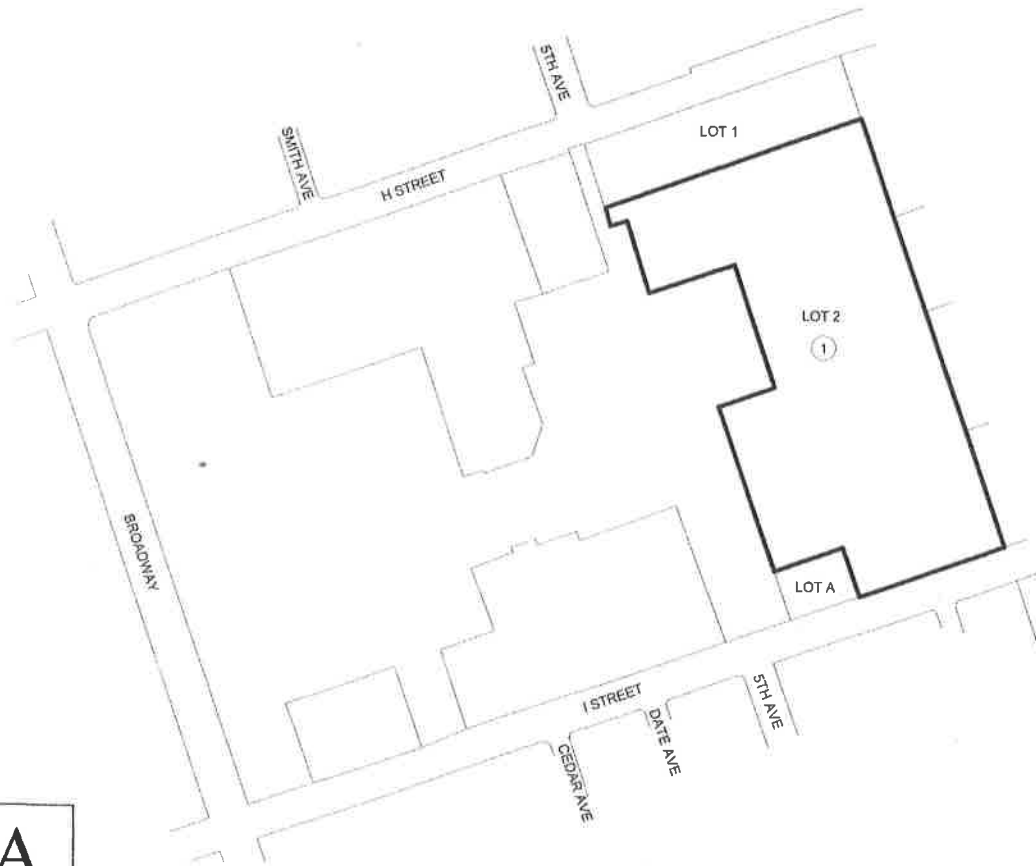
2006 - 0462156

BK40 PG 56

**ANNEXATION MAP NO. 10 OF
COMMUNITY FACILITIES DISTRICT NO. 10,
(CITRUS BAY)**

CHULA VISTA ELEMENTARY SCHOOL DISTRICT
COUNTY OF SAN DIEGO
STATE OF CALIFORNIA

LOT DESCRIPTION	
MAP REF NO.	PARCEL MAP LOT NO.
1	LOT 2 OF PARCEL MAP 16606 RECORDED AS DOCUMENT NO. 2024-7000120



LEGEND:



PARCEL MAP LOT NUMBER



COMMUNITY FACILITIES
DISTRICT ANNEXATION
BOUNDARY

FILED IN THE OFFICE OF THE CLERK OF THE BOARD OF EDUCATION THIS
29TH DAY OF APRIL, 2024.

Francisco Tamayo
FRANCISCO TAMAYO

CLERK OF THE BOARD OF EDUCATION
CHULA VISTA ELEMENTARY SCHOOL DISTRICT
STATE OF CALIFORNIA

I HEREBY CERTIFY THAT THE WITHIN MAP SHOWING THE PROPOSED
BOUNDARIES OF TERRITORY TO BE ANNEXED TO COMMUNITY FACILITIES
DISTRICT NO. 10 OF THE CHULA VISTA ELEMENTARY SCHOOL DISTRICT, COUNTY
OF SAN DIEGO, STATE OF CALIFORNIA, WAS APPROVED BY THE BOARD OF
EDUCATION AT A REGULAR MEETING THEREOF, HELD ON THE 29TH DAY OF
May, 2024, BY ITS RESOLUTION NO. 10724-110. THIS BOUNDARY MAP
AMENDS THE BOUNDARY MAP FOR COMMUNITY FACILITIES DISTRICT NO. 10 OF
THE CHULA VISTA ELEMENTARY SCHOOL DISTRICT, COUNTY OF SAN DIEGO,
STATE OF CALIFORNIA, PREVIOUSLY RECORDED IN BOOK 32, OF MAPS OF
ASSESSMENT AND COMMUNITY FACILITIES DISTRICTS, AT PAGE 59, IN THE
OFFICE OF THE COUNTY RECORDER FOR THE COUNTY OF SAN DIEGO, STATE OF
CALIFORNIA.

Francisco Tamayo
FRANCISCO TAMAYO

CLERK OF THE BOARD OF EDUCATION
CHULA VISTA ELEMENTARY SCHOOL DISTRICT
STATE OF CALIFORNIA

FILED THIS 29TH DAY OF May, 2024, AT THE HOUR OF 11:48
O'CLOCK A.M. IN BOOK 52, AND PAGE 4 OF MAPS OF
ASSESSMENT AND COMMUNITY FACILITIES DISTRICTS IN THE OFFICE OF THE
COUNTY RECORDER IN THE COUNTY OF SAN DIEGO, CALIFORNIA.
FILE NO. 2024-7000248

DEPUTY RECORDER
COUNTY RECORDER, JORDAN Z. MARKS
COUNTY OF SAN DIEGO
STATE OF CALIFORNIA



SDFA

SPECIAL DISTRICT FINANCING
& ADMINISTRATION

437 WEST GRAND AVENUE
ESCONDIDO, CALIFORNIA 92025
TELEPHONE: (760)233-2830
FAX: (760)233-2831

SHEET	1
DATE	APRIL 2024
JOB NO.	CFD10-0424