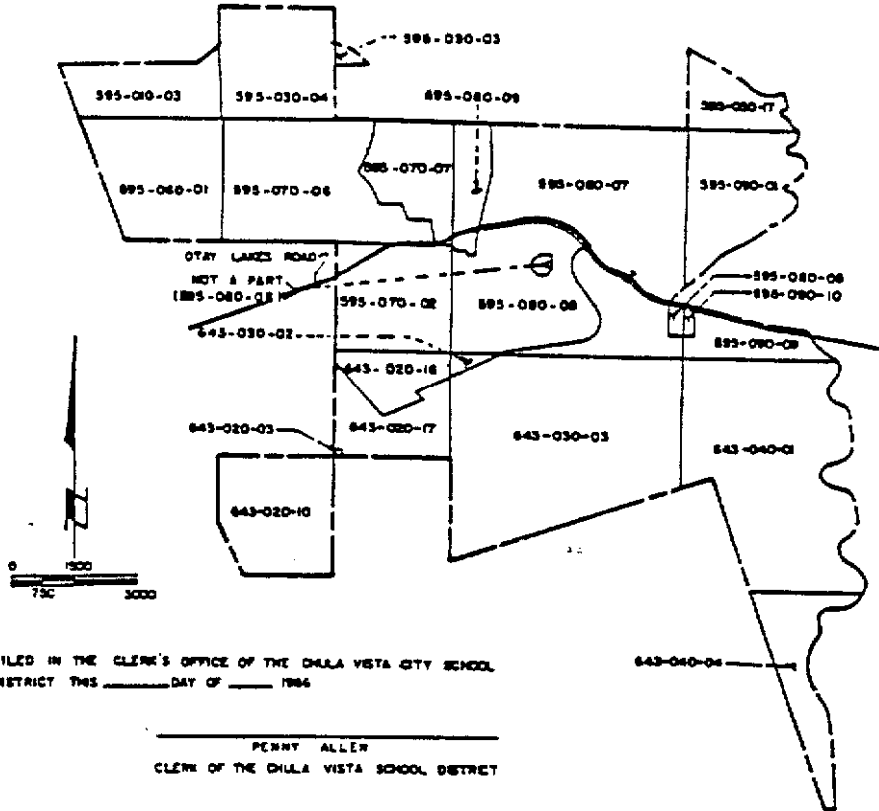


BOUNDARY MAP

COMMUNITY FACILITIES DISTRICT NO. 1

(CHULA VISTA CITY SCHOOL DISTRICT)



FILED IN THE CLERK'S OFFICE OF THE CHULA VISTA CITY SCHOOL DISTRICT THIS _____ DAY OF _____ 1986

PENNY ALLER
CLERK OF THE CHULA VISTA SCHOOL DISTRICT

PURSUANT TO RESOLUTION NO. _____; RESOLUTION OF THE BOARD OF EDUCATION OF THE CHULA VISTA CITY SCHOOL DISTRICT; COUNTY OF SAN DIEGO; STATE OF CALIFORNIA; ADOPTING BOUNDARY MAP SHOWING PROPERTIES AND LAND TO BE SERVED BY SCHOOL FACILITIES WITHIN THE COMMUNITY FACILITIES DISTRICT NO. II; SAID MAP WAS ADOPTED BY THE BOARD OF EDUCATION AT ITS MEETING OF THE _____ DAY OF _____ 1986.

SHARIN GILFILLAN
PRESIDENT OF THE BOARD OF EDUCATION

LEGEND

- BELLO - ROOS DISTRICT BOUNDARY
- ASSESSOR'S PARCEL BOUNDARY
- ED-486-78 ASSESSOR'S PARCEL NO
- LISTING IMPROVED STREETS

WILLDAN ASSOCIATES
CONSULTING ENGINEERS AND PLANNERS
10000 SAN DIEGO AVENUE, SUITE 100, SAN DIEGO, CA 92131


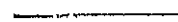
BOUNDARY MAP

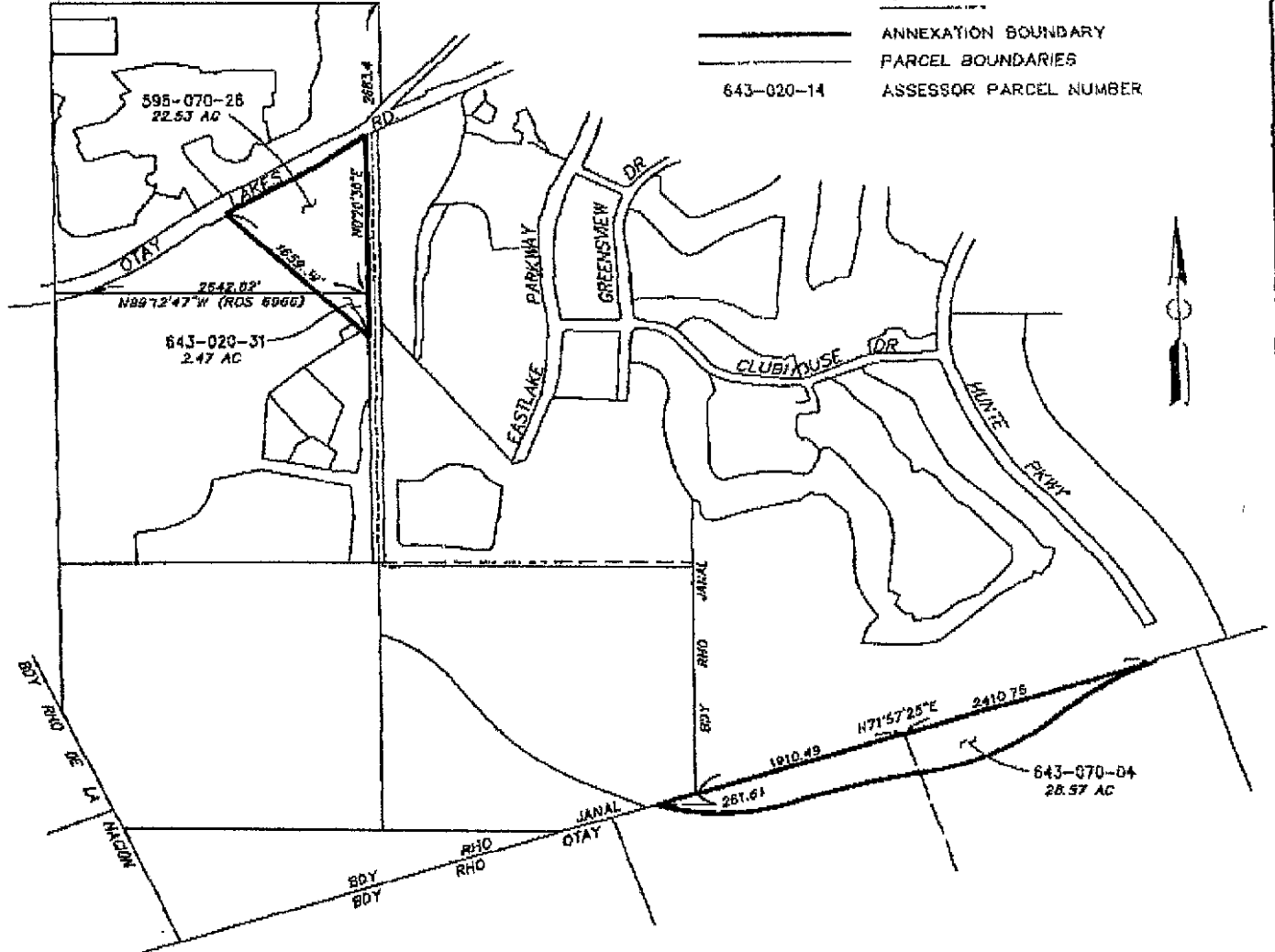
COMMUNITY FACILITIES DISTRICT NO. 1

ANNEXATION NO.2

(CHULA VISTA ELEMENTARY SCHOOL DISTRICT)

LEGEND

-  ANNEXATION BOUNDARY
-  PARCEL BOUNDARIES
- 643-020-14 ASSESSOR PARCEL NUMBER



FILED THIS 26th DAY OF September 1999 AT THE HOUR OF 11 1/2 AM
 IN BOOK 88 PAGE 40 DOCUMENT NO. 44-55727 OF
 COMMUNITY FACILITIES DISTRICTS IN THE OFFICE OF THE COUNTY OF SAN
 DIEGO, STATE OF CALIFORNIA.

GREGORY J. SMITH
 COUNTY RECORDER
 BY: E. C. Olson
 DEPUTY COUNTY RECORDER

FILED IN THE OFFICE OF THE SECRETARY OF THE GOVERNING BOARD
 THIS 26th DAY OF September 1999

Libia S. Gil
 LIBIA S. GIL
 SECRETARY OF THE GOVERNING BOARD
 CHULA VISTA ELEMENTARY SCHOOL DISTRICT
 STATE OF CALIFORNIA

PURSUANT TO RESOLUTION NO. 99-25-32 OF THE BOARD OF EDUCATION
 OF THE CHULA VISTA ELEMENTARY SCHOOL DISTRICT, COUNTY OF SAN DIEGO,
 STATE OF CALIFORNIA, ADOPTING BOUNDARY MAP SHOWING PROPERTIES AND
 LAND TO BE ANNEXED TO COMMUNITY FACILITIES DISTRICT NO. 1; SAID MAP
 WAS ADOPTED AT ITS REGULAR MEETING ON THE 23rd DAY OF Sept 1999.

NOTE:
 THE BOUNDARY AND PARCELS AS SHOWN HEREON ARE
 AS SHOWN ON THE ASSESSOR'S PARCEL MAPS OF THE
 COUNTY OF SAN DIEGO, STATE OF CALIFORNIA.

Libia S. Gil
 LIBIA S. GIL
 SECRETARY OF THE GOVERNING BOARD
 CHULA VISTA ELEMENTARY SCHOOL DISTRICT
 STATE OF CALIFORNIA

Richard Jacobs 9-28-99
 RICHARD J. JACOBS, REC 12101

