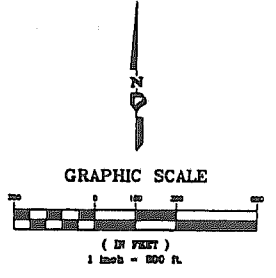
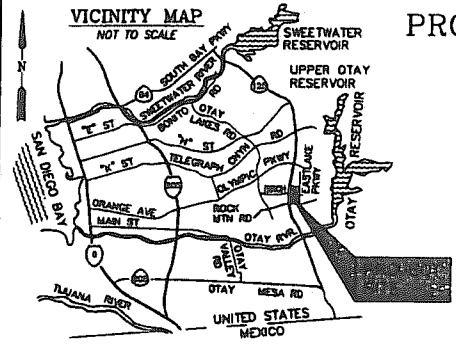


PROPOSED BOUNDARY MAP OF COMMUNITY FACILITIES DISTRICT NO. 18 (OTAY RANCH MILLENIA - EASTERN URBAN CENTER)

CHULA VISTA ELEMENTARY SCHOOL DISTRICT, COUNTY OF SAN DIEGO, STATE OF CALIFORNIA



BOARD OF EDUCATION CERTIFICATE

FILED IN THE OFFICE OF THE CLERK OF THE BOARD OF EDUCATION OF THE SCHOOL DISTRICT THIS 1ST DAY OF MARCH, 2013

Sandra M. Neuman
CLERK OF THE BOARD OF EDUCATION
CHULA VISTA ELEMENTARY SCHOOL DISTRICT
STATE OF CALIFORNIA

BOARD OF EDUCATION APPROVAL

I HEREBY CERTIFY THAT THE WITHIN MAP SHOWING BOUNDARIES OF COMMUNITY FACILITIES DISTRICT NO. 18 OF THE CHULA VISTA ELEMENTARY SCHOOL DISTRICT, COUNTY OF SAN DIEGO, STATE OF CALIFORNIA, WAS APPROVED BY THE BOARD OF EDUCATION OF THE SCHOOL DISTRICT AT A REGULAR MEETING THEREOF HELD ON THE 6TH DAY OF MARCH, 2013, BY ITS RESOLUTION NO. ED12-13-12.

Sandra M. Neuman
CLERK OF THE BOARD OF EDUCATION
CHULA VISTA ELEMENTARY SCHOOL DISTRICT
STATE OF CALIFORNIA

COUNTY RECORDER'S CERTIFICATE

O'CLOCK _____ M.
OF MAPS OF ASSESSMENT
THE OFFICE OF THE
INIA.

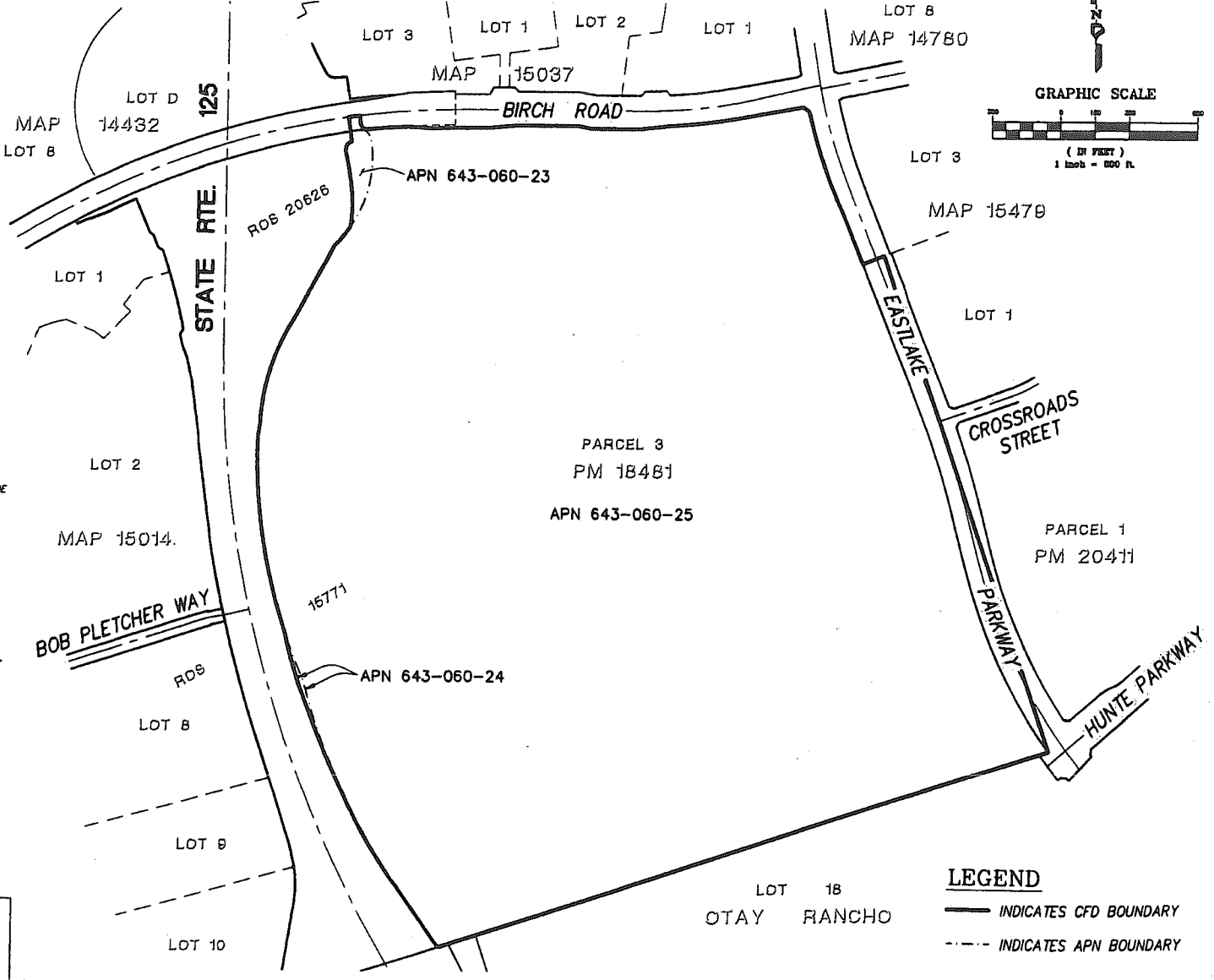
THE ORIGINAL OF THIS DOCUMENT
WAS RECORDED ON MAR 12, 2013
DOCUMENT NUMBER 20130137855
Ernest J. Dronenswig, Jr., COUNTY RECORDER
SAN DIEGO COUNTY RECORDER'S OFFICE
TIME 1:53 PM

DATE _____

NOTE: FOR PARTICULARS OF LINES AND DIMENSIONS OF ASSESSOR'S PARCELS, REFERENCE IS MADE TO THE SAN DIEGO COUNTY ASSESSOR'S PARCEL MAPS.

PROJECT DESIGN CONSULTANTS
Planning | Landscape Architecture | Engineering | Survey

701 B Street, Suite 600
San Diego, CA 92101
619.235.9171
619.234.0246 Fax



LOT 18
OTAY RANCHO

LEGEND
— INDICATES CFD BOUNDARY
--- INDICATES APN BOUNDARY

BK44 PG02

2013-0157855

2013 - 0157855

BK44 PG02